

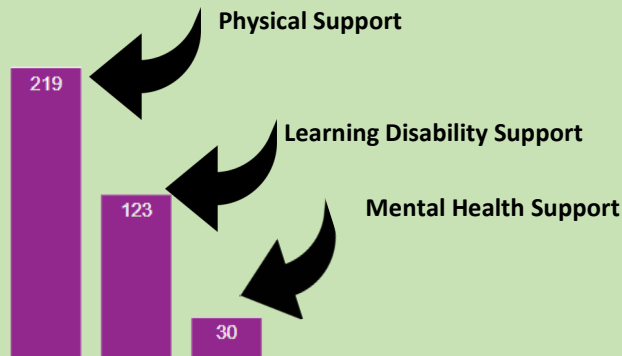
# Adult Social Care Survey Derbyshire 2022-23

## Who answered the survey?

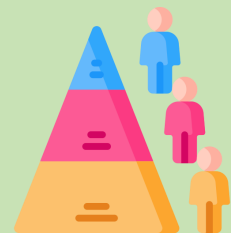


**418** surveys\* (29%) out of the 1441 random sample were completed

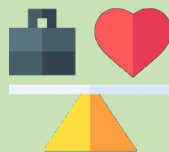
**74%** of respondents live in the **community**, **25%** in **residential care** and **1%** in **nursing care**



**81%** of respondents had a primary support reason of **physical support** or **learning disability support**



**54%** of respondents were aged 65+ and **46%** were aged 18-64

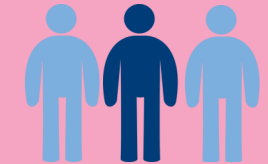


Quality of Life	2021-22	2022-23
Derbyshire	18.7	19.1
East Midlands	18.8	18.9
England	18.9	19.0

**Quality of Life** (scored out of 24) in Derbyshire is **higher** than last year

## What did they tell us?

Nearly **1 in 3** Derbyshire respondents feel lonely "some of the time"



"I get all the food and drink I like when I want": nearly **2 in 3** respondents agreed

Derbyshire ranks **10th** nationally for ASCOF 3A relating to **satisfaction levels**

**72%** of respondents are **extremely or very satisfied** with the care and support they receive



Nearly **3 in 4** respondents said they do **all or enough** of the things they value or enjoy with their time

Around **4 in 5** service users have **adequate or as much** social contact as they would like. **1 in 5** do not



Over **4 in 10** respondents had **never tried** to find information or advice. Nearly **4 in 10** respondents found it **fairly or very easy** to find information. Nearly **2 in 10** found it **very or fairly difficult**

\* Not all figures will add up to 100% or 418 as not all questions were answered by all respondents

As of January 2023, 9,006 people receiving social services care or support in Derbyshire were eligible to receive the survey. This is about 14 in every 1,000 adults in Derbyshire (Census 2021 for Derbyshire 635,657)

For any further information please contact [kit@derbyshire.gov.uk](mailto:kit@derbyshire.gov.uk)