

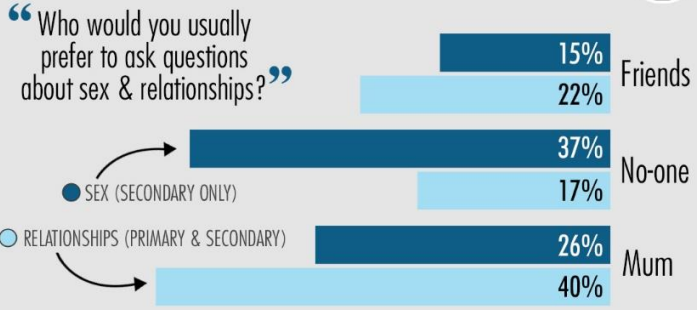
# Relationship and Sex Education in Derbyshire



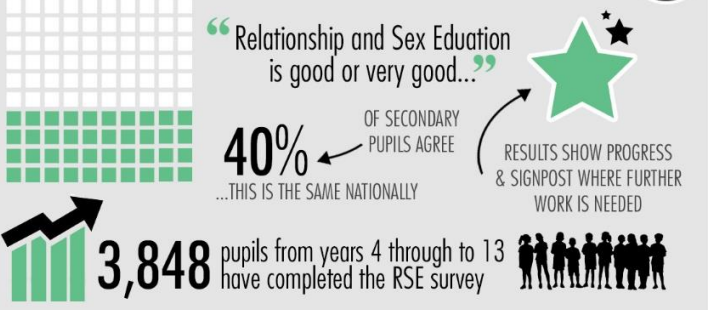
DERBYSHIRE SCHOOLS CAN ACCESS THE RSE PORTAL BY EITHER SCANNING THE QR CODE OR TYPING THE WEB ADDRESS INTO THEIR BROWSER

...what are young people and children telling us?\*

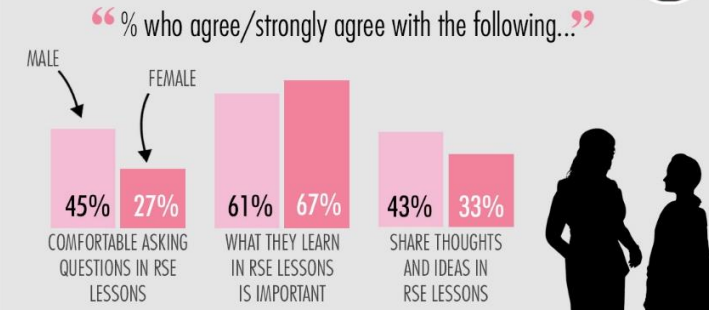
## Fostering dialogue and confidence in sensitive topics



## Uncovering insights behind school results



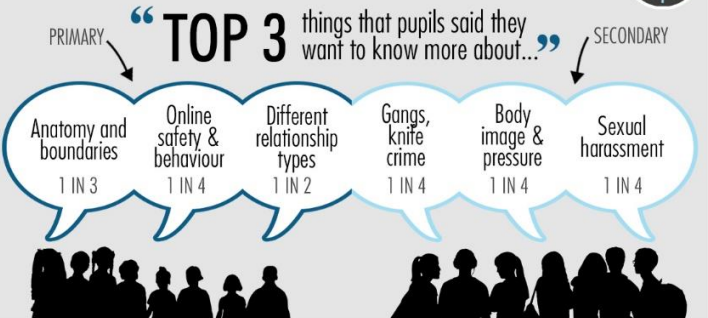
## How does gender influence RSE engagement?



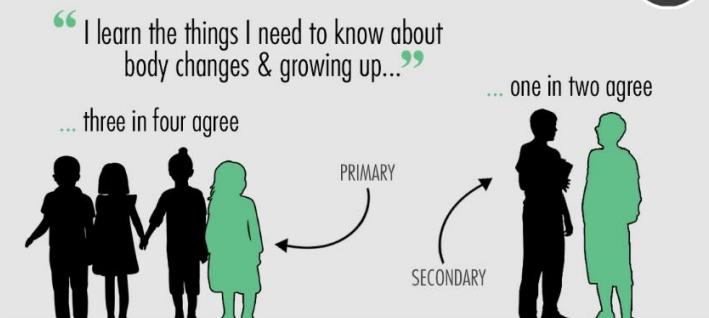
## How is RSE supporting our young people?



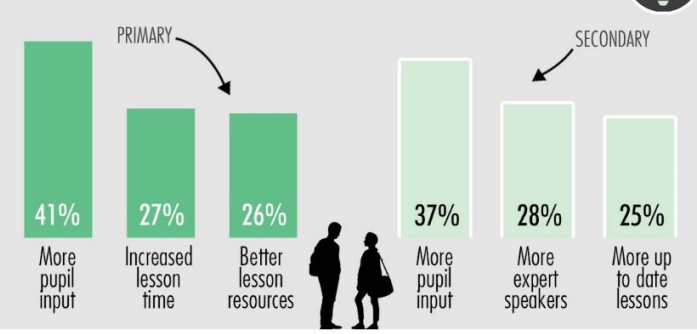
## What do young people want to learn more about?



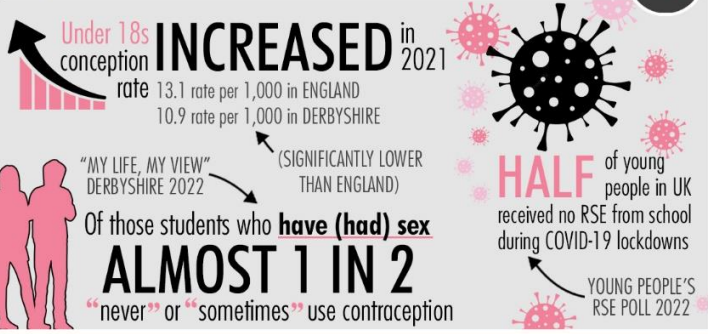
## Teaching on body changes for all key stages



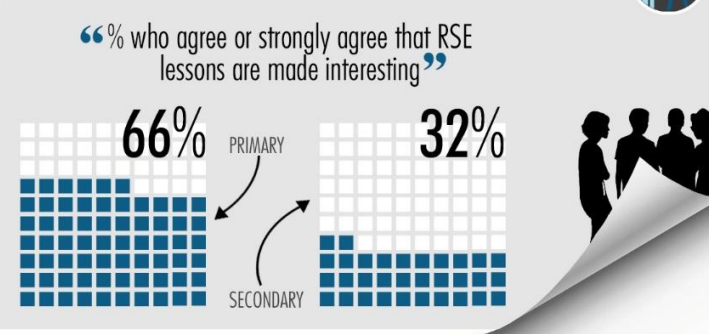
## How would our young people like us to improve RSE?



## Why is this important now?



## Which strategies foster creative learning?



\* Based on the online survey responses received between May 2022 - May 2023 from 3,848 Derbyshire pupils receiving relationship education in academic years 4-6 and relationship and sex education in academic years 7-13