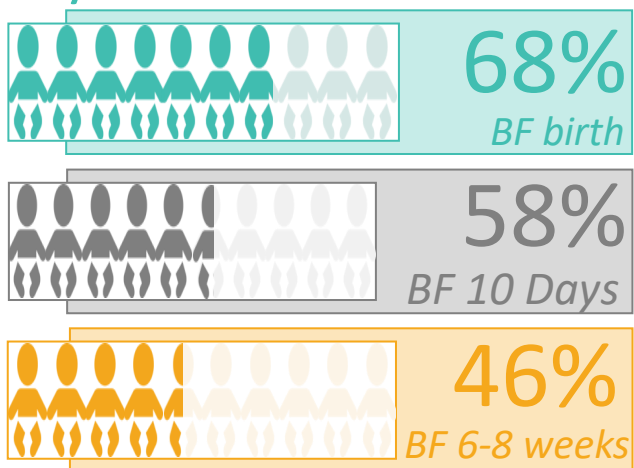
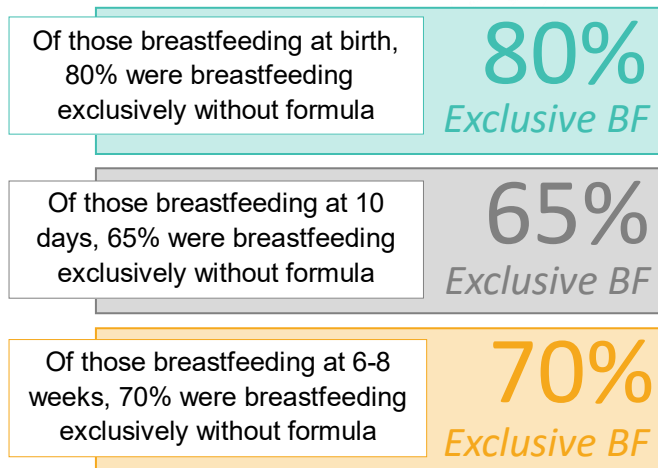


# Breastfeeding in Derbyshire at birth, 10 days, and 6-8 weeks (Q1 - Q4 2022/23)

## 1. Derbyshire Prevalence

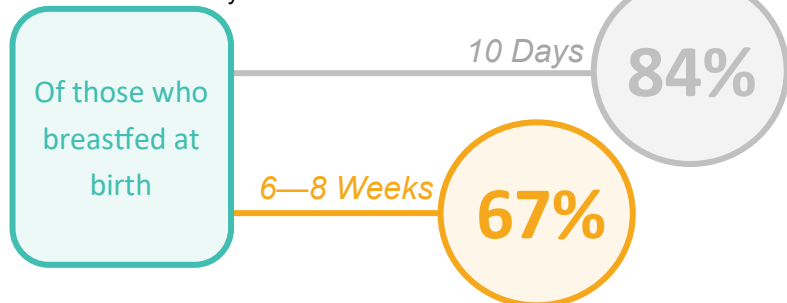


## 2. Exclusive Breastfeeding



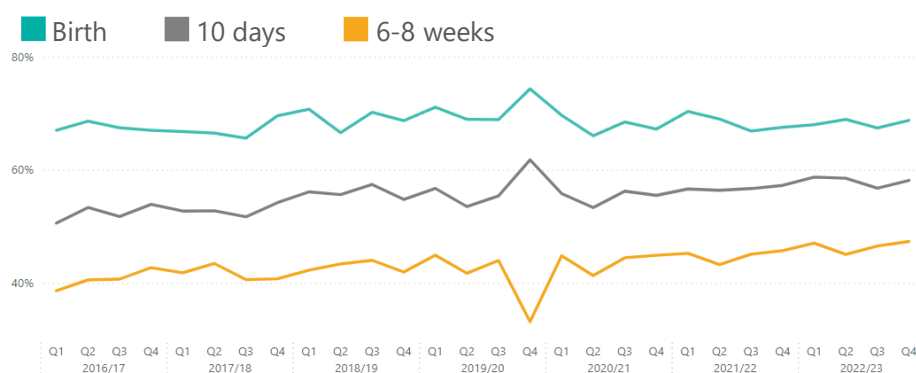
## 3. Sustainment

Of those who breastfed at birth, these are the percentages who continued to breastfeed at 10 days and at 6-8 weeks



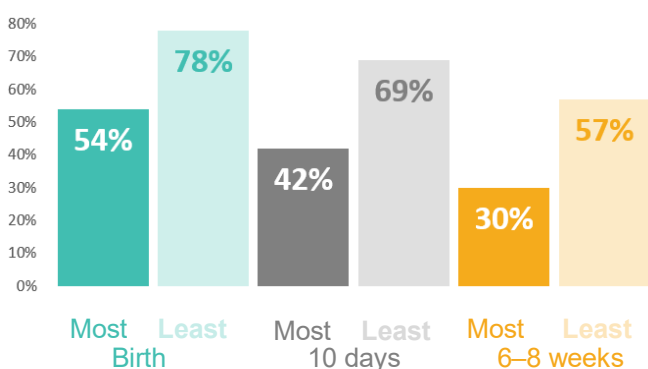
## 4. Trends\*

\*Does not include complete Q4 data for 2019/20

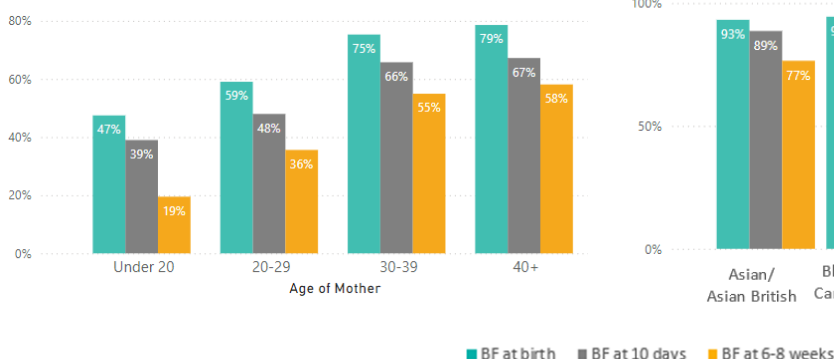


## 5. Prevalence & Deprivation

Breastfeeding prevalence comparing the most deprived decile to the least deprived decile using the latest IMD data.

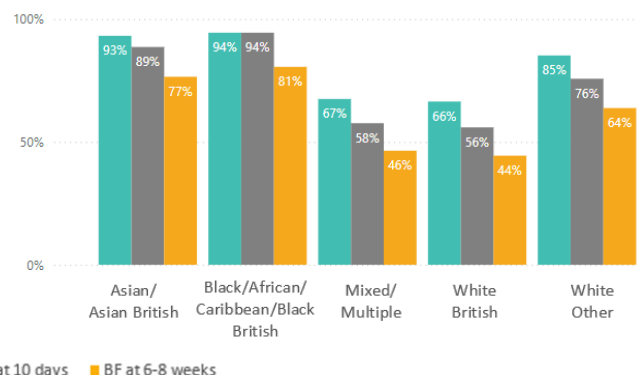


## Breastfeeding by Age



## 6. Age and Ethnicity

### Breastfeeding by Ethnicity



## 8. Compared to England

## 7. Breastfeeding compared to Derbyshire

### Baby's first feed breastmilk

Most recent data in 2020/21 showed that 70% of babies in Derbyshire received breastmilk as their first feed, significantly lower when compared to England (72%).

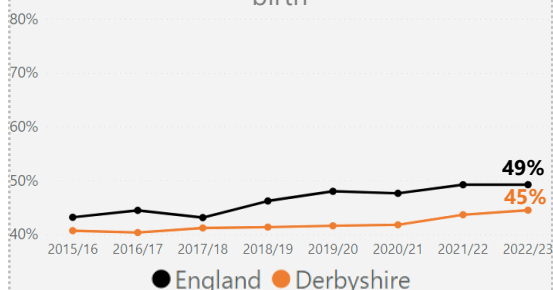


### BF prevalence at 6-8 weeks

Derbyshire continues to have a significantly lower breastfeeding prevalence at 6-8 weeks compared to England.

Fingertips Recent Trend: ▲ Increasing & getting better

Breastfeeding prevalence at 6-8 weeks after birth



Data source: OHID Fingertips ©Crown copyright 2023

### Birth

High Peak had significantly higher breastfeeding (74%) than Derbyshire (68%). **Bolsover** and **Erewash** had significantly lower (63% and 64%) than Derbyshire.

### MSOA compared to Derbyshire

Significantly worse, similar, significantly better

### 10 days

High Peak had significantly higher breastfeeding (66%) than Derbyshire (58%). **Bolsover** had significantly lower (53%) than Derbyshire.

### MSOA compared to Derbyshire

Significantly worse, similar, significantly better

### 6-8 weeks

High Peak and **Derbyshire Dales** had significantly higher breastfeeding (52% and 53%) than Derbyshire (47%). **Bolsover** had significantly lower (41%) than Derbyshire.

### MSOA compared to Derbyshire

Significantly worse, similar, significantly better