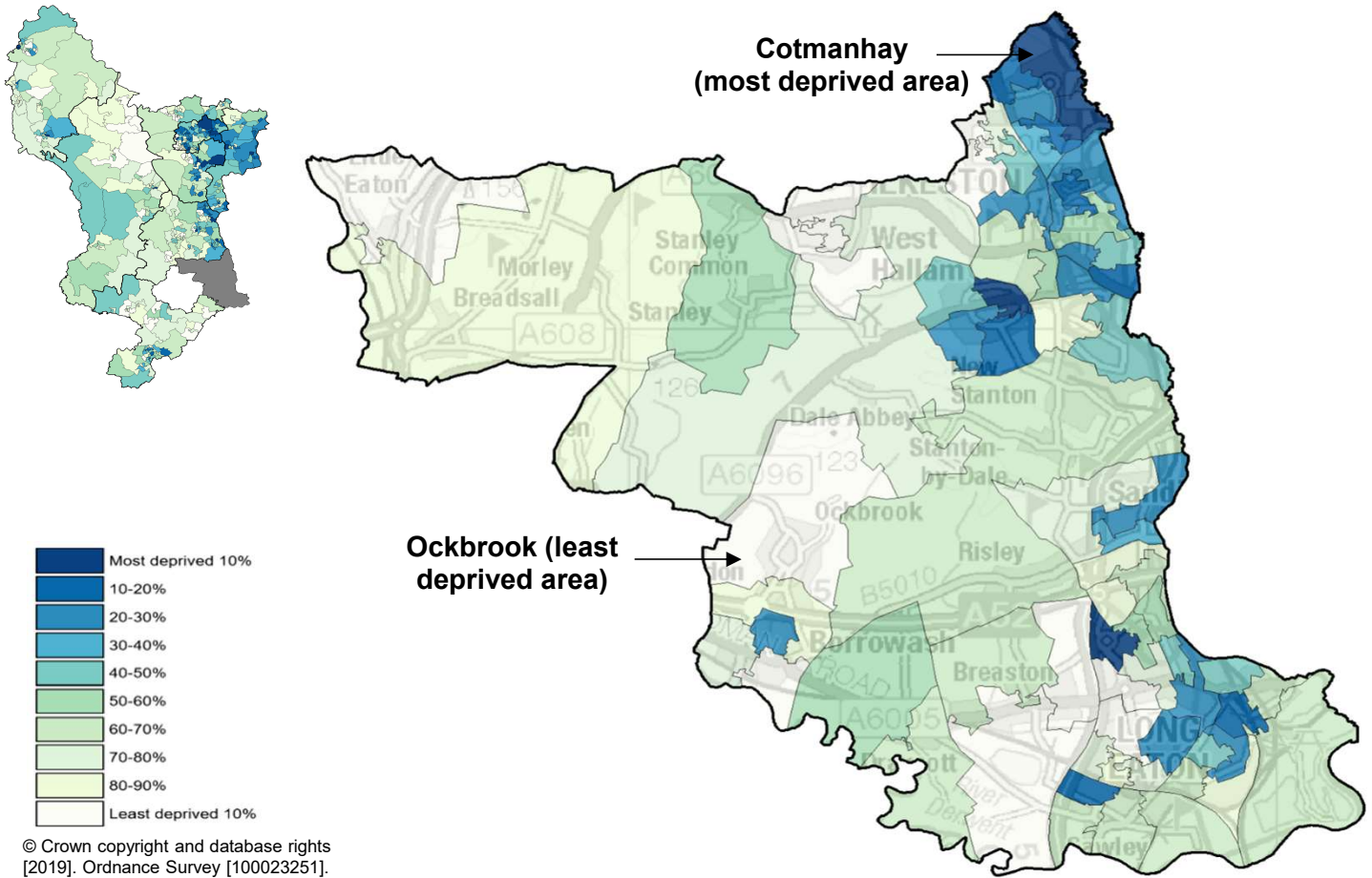


Deprivation in Erewash

Erewash district contains towns such as Little Eaton, Ilkeston, Sandiacre and Long Eaton. 23% of Derbyshire's population live here, which is approximately 115,000 people.



Derbyshire's **4th** most deprived district. Ranked 168 of 316 local authority districts.

4 of 73 areas are in the most deprived 10% nationally, and **11** in the most deprived 20%.

Worst ranked areas:

- 1 - Cotmanhay Hopewell Farm
- 2 - Kirk Hallam
- 3 - Derby Road W

Areas of concern:

- Kirk Hallam
- Cotmanhay Bennerly
- Cotmanhay Central

Deprivation by domain in Erewash (areas in most deprived 20% nationally)

