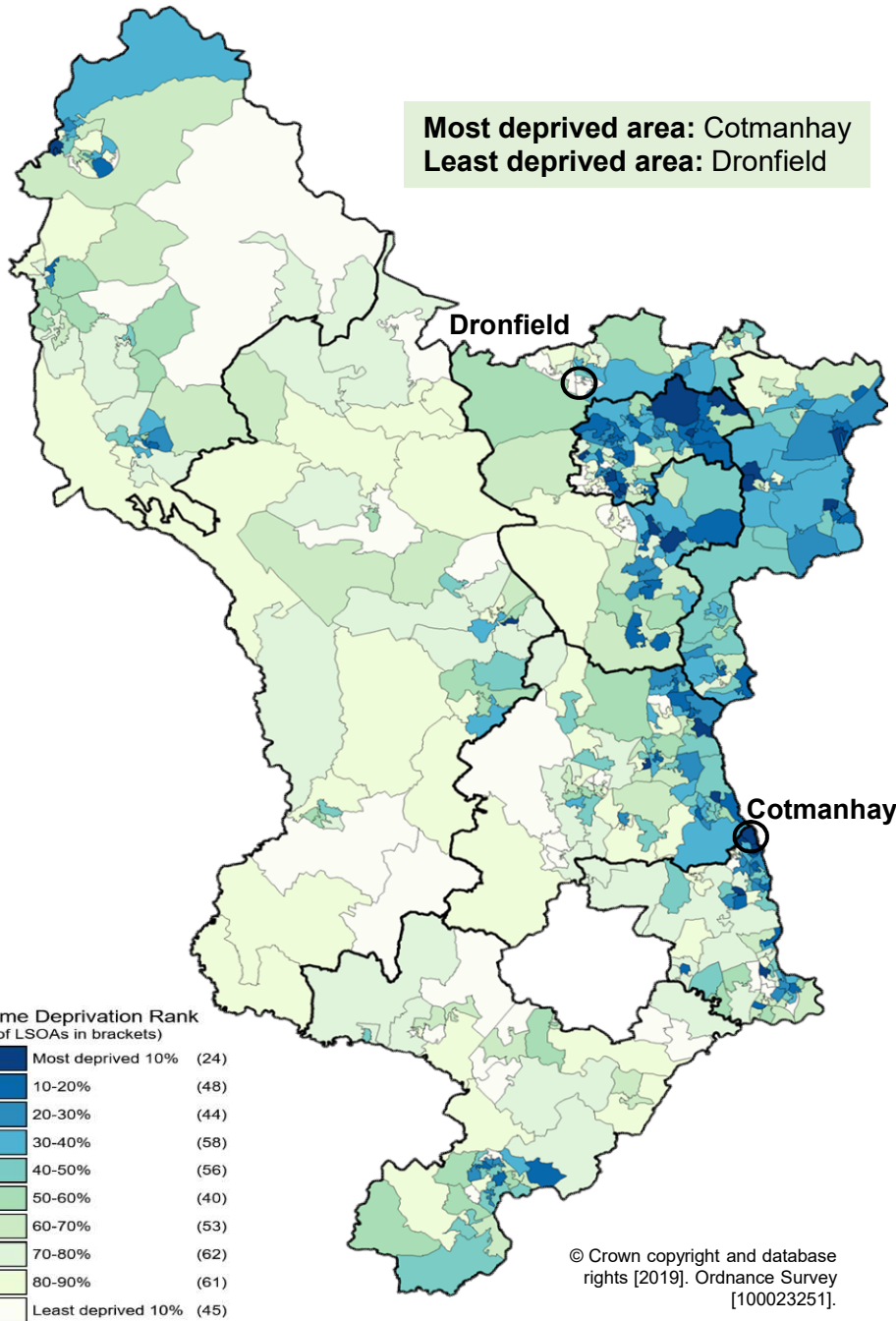


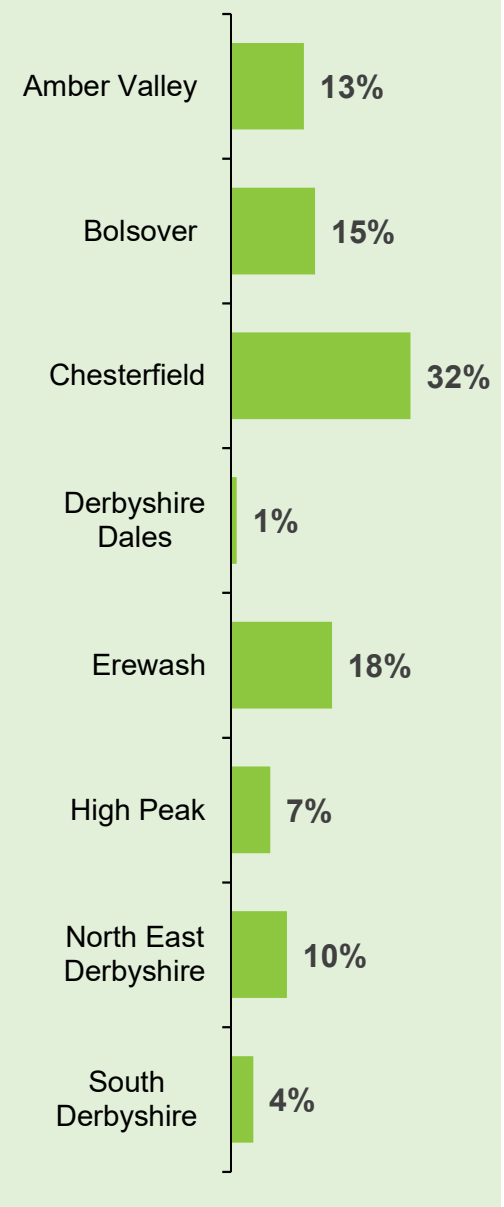


Income Deprivation in Derbyshire 2019

The income Deprivation Domain measures the proportion of the population experiencing deprivation relating to low income. The definition of low income includes people that are out-of-work, and those that are in work but who have low earnings.



Spread of the 20% most deprived LSOAs across districts (%)



87,600 people

are income deprived in Derbyshire

24 areas (5%)

are in the most deprived 10% nationally

72 areas (15%)

are in the most deprived 20% nationally

45 areas (9%)

are in the least deprived 10% nationally