

# Productivity in Derbyshire

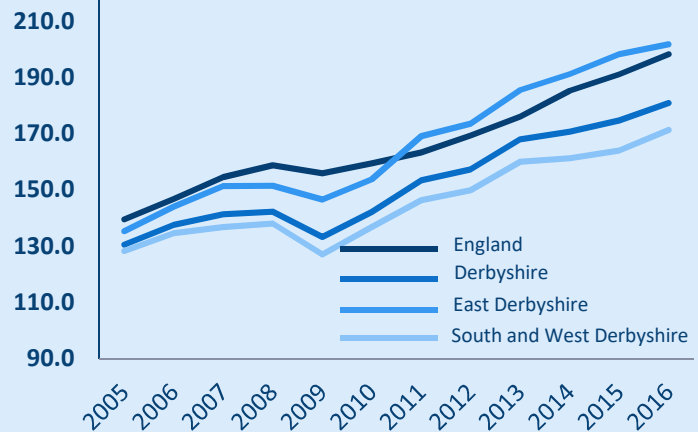
## Derbyshire contributes



towards the UK's economy

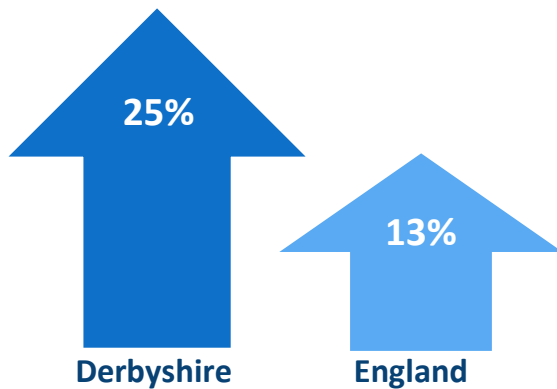
% change in output since 1998

## Economic output

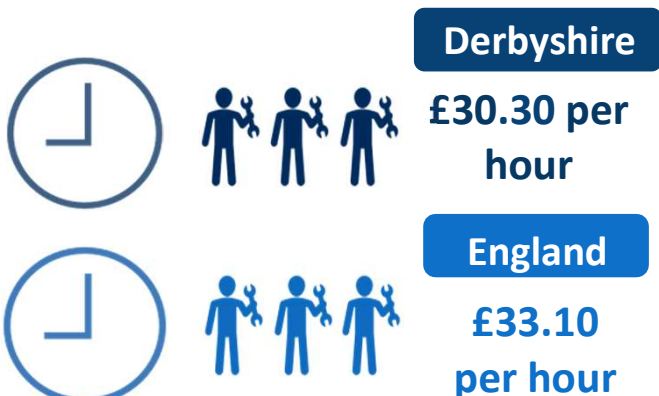


The 36% increase in the Derbyshire economy since 2009 compares well with the 27% nationally, with East Derbyshire leading the way locally

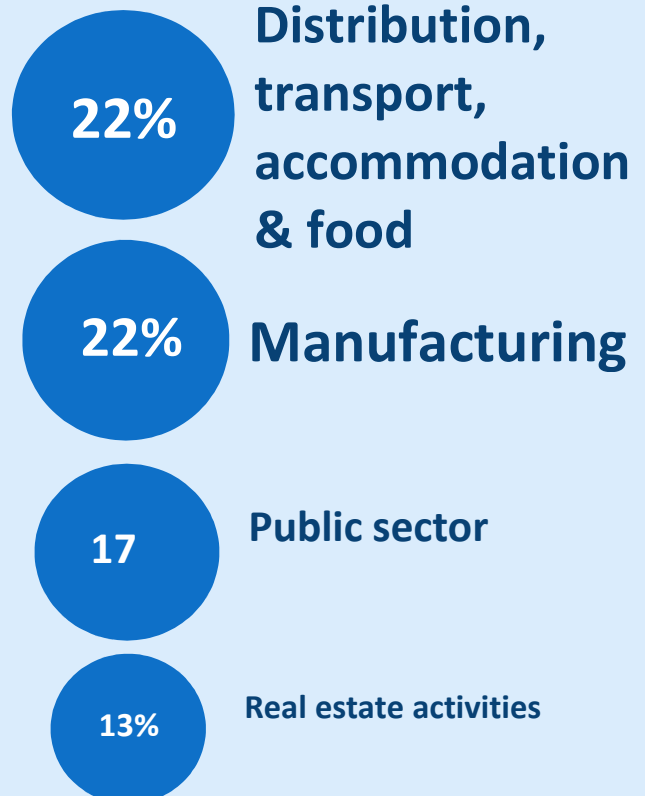
Productivity in Derbyshire has improved significantly since the 2009 recession



The amount of output generated by a worker per hour indicates how productive an economy is



Four sectors generate nearly 75% of the county's economic output



Over the last year distribution, transport, accommodation and food has seen the largest increase in value. Of the top four real estate is the only one to have