

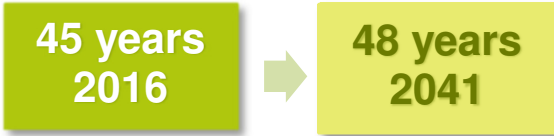
How is Derbyshire's population projected to change in the next 25 years?

2041
↑
2016

Derbyshire's population will increase by 8% by 2041

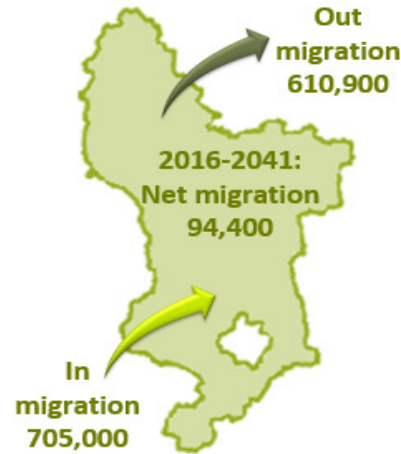
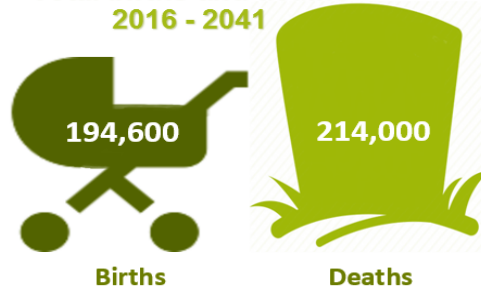


Median age of residents

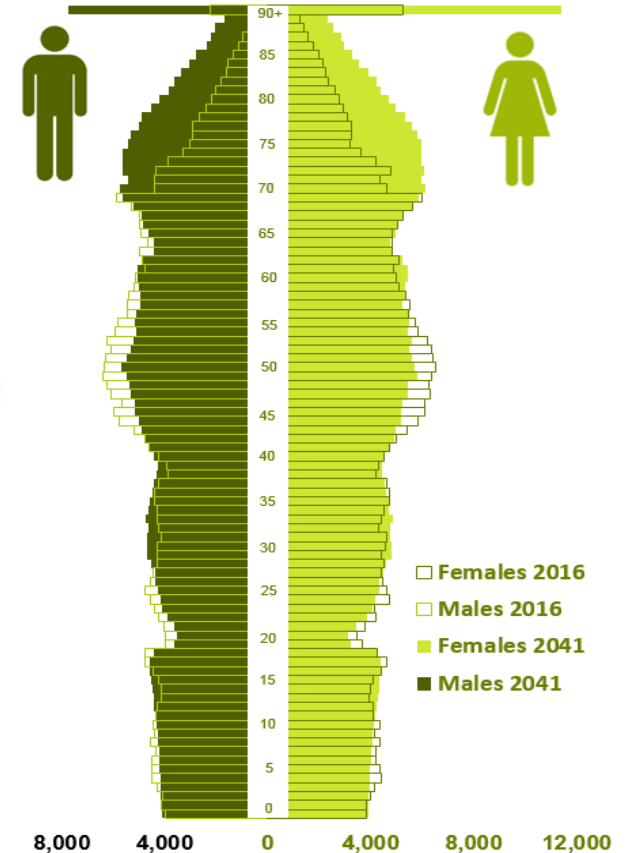


90+
The population aged 90 and over will more than double by 2041

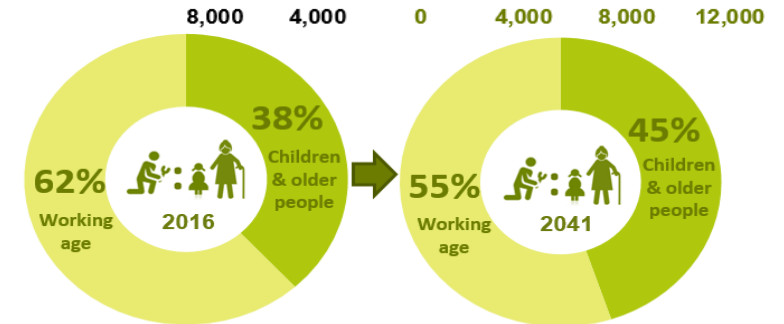
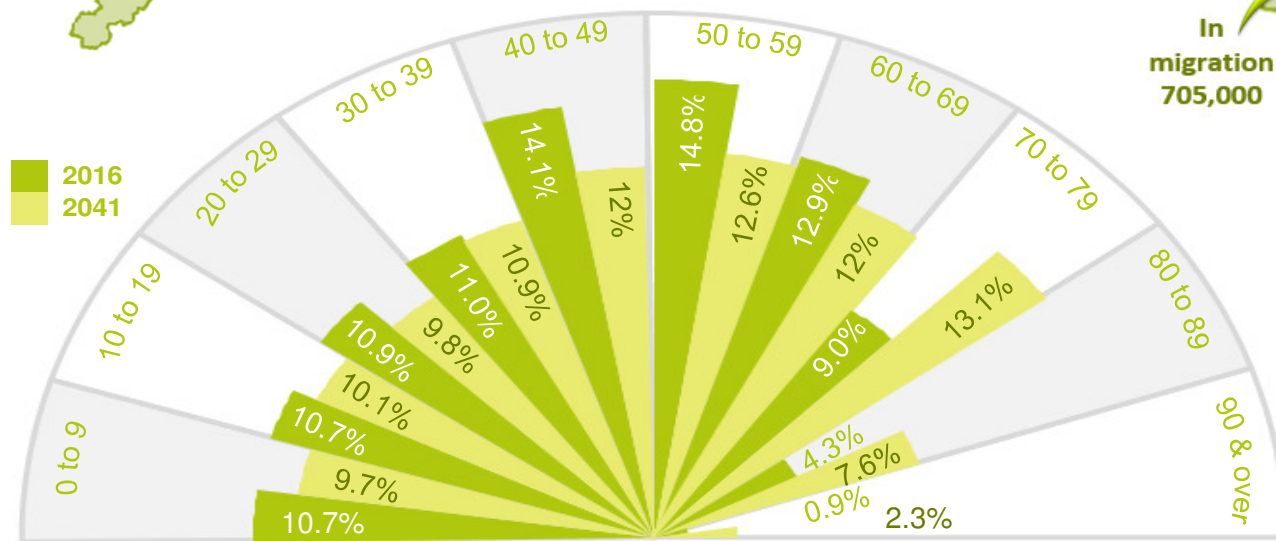
Total births and deaths 2016 - 2041



Population profile 2016 and 2041



Population by age band for 2016 and 2041



In 2016 62% of the population are of working age. By 2041 this figure is expected to drop to 55%

You can find all of the data from the latest ONS Population Projections on the Derbyshire Observatory at <http://observatory.derbyshire.gov.uk>

Source: 2016 Based Mid-Year Population Projections, Office of National Statistics, (July 2018) v1

© Crown copyright and database rights [2018]. Ordnance Survey [100023251]