

Chapel West

Area type and code
Ward (E05003394)

Total households

Total population resident in households	Total number of households	Total number of families in households
4,118	1,811	1,271

A family is defined as a group of people who are either a:

- married, same-sex civil partnership, or cohabiting couple, with or without child(ren)
- lone parent with child(ren)
- married, same-sex civil partnership, or cohabiting couple with grandchild(ren) but with no children present from the intervening generation
- single grandparent with grandchild(ren) but no children present from the intervening generation

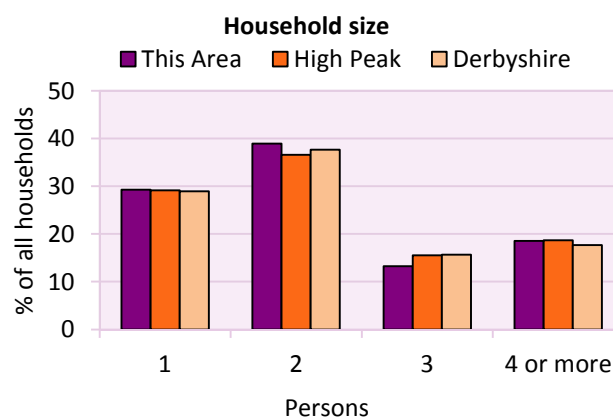
Children in couple families need not belong to both members of the couple.

For single or couple grandparents with grandchildren present, the children of the grandparent(s) may also be present if they are not parents or grandparents of the youngest generation present.

Household size

Household size		% of total households		
Persons	Number of households	This Area	High Peak	Derbyshire
		1	530	29.3
2	705	38.9	36.6	37.7
3	240	13.3	15.5	15.7
4 or more	336	18.6	18.7	17.7

Average household size		Average Household Size		
Persons	Number of households	This Area	High Peak	Derbyshire
		4,118	1,811	2.3



Household composition

Household composition	Number of households	% of total households		
		This Area	High Peak	Derbyshire
One person households:	530	29.3	29.2	28.9
- Pensioner	275	15.2	12.7	13.0
- Other	255	14.1	16.4	15.9
One family households:	1,047	57.8	56.3	57.2
- All pensioner	203	11.2	8.6	9.6
- Married couple households	669	36.9	36.4	36.4
- Cohabiting couple households	175	9.7	11.2	11.2
Lone parent households:	176	9.7	9.9	9.5
- with at least 1 dependent child	105	5.8	6.4	6.2
- all children non-dependent	71	3.9	3.4	3.3
Other households	58	3.2	4.7	4.4

2011 Census: Households Profile

Chapel West

Area type and code
Ward (E05003394)

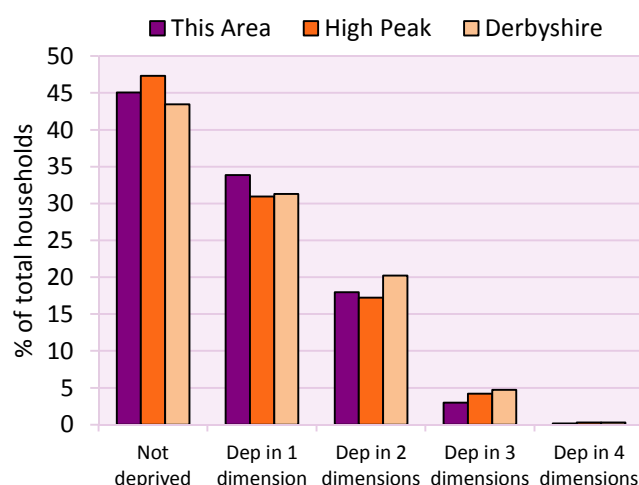
Deprivation

Household deprivation (Census classification)	Number of households	% of all households		
		This Area	High Peak	Derbyshire
Not deprived in any dimension	816	45.1	47.3	43.5
Deprived in one dimension	613	33.8	31.0	31.3
Deprived in 2 dimensions	325	17.9	17.2	20.2
Deprived in 3 dimensions	54	3.0	4.2	4.7
Deprived in 4 dimensions	3	0.2	0.3	0.3

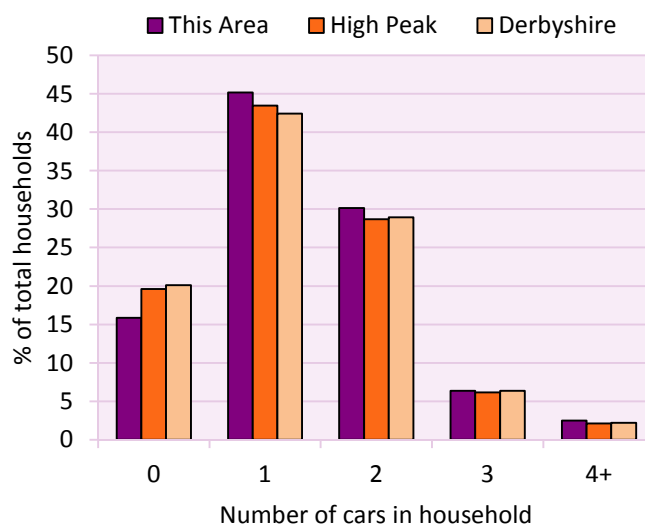
The Census measure of deprivation uses the following four dimensions:

Employment - Where any member of the household who is not a full-time student is either unemployed or long-term sick; **Education** - Where no member of the household has at least a level 2 qualification, and no member of the household aged 16-18 is a full-time student; **Health and disability** - If any member of the household has 'bad or very bad' general health or has a long term health problem; and **Housing** - The household's accommodation is either overcrowded (with an occupancy rating -1 or less), is in a shared dwelling, or has no central heating. A household is classified as being deprived in one to four of these dimensions in any combination.

Household deprivation



Households without a car



Car availability

Car availability Number of cars or vans in household	Number of households	% of all households		
		This Area	High Peak	Derbyshire
0	287	15.8	19.6	20.1
1	818	45.2	43.5	42.4
2	546	30.1	28.7	28.9
3	115	6.4	6.1	6.4
4+	45	2.5	2.1	2.2
Total number of cars or vans	Number of cars/vans	Average number of cars per household		
	2,443	This Area	High Peak	Derbyshire
		1.3	1.3	1.3

2011 Census: Households Profile

Chapel West

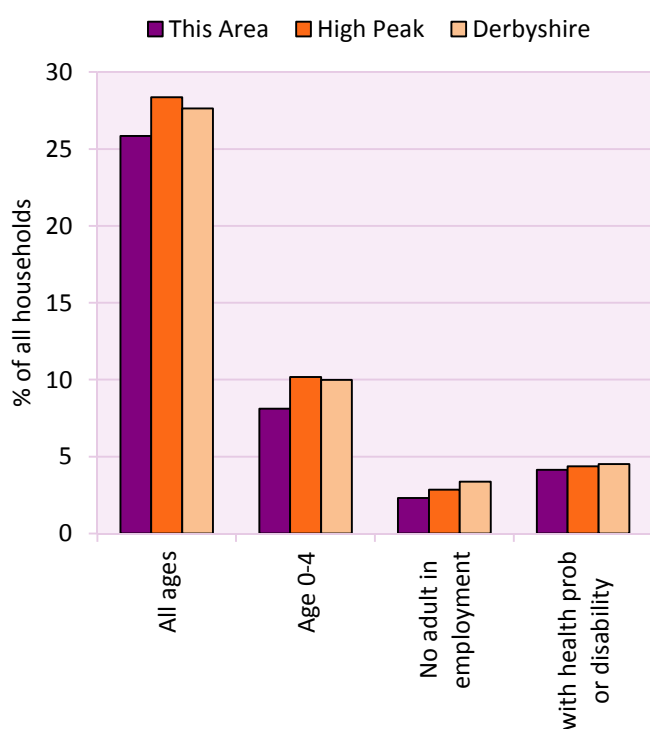
Area type and code
Ward (E05003394)

Dependent children

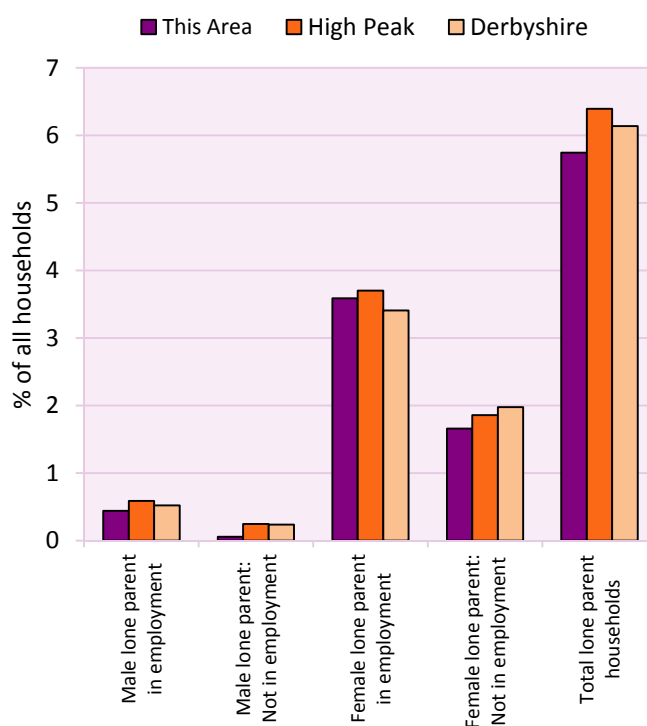
Households with dependent children	Number of households	% of total households		
		This Area	High Peak	Derbyshire
Households with dependent children: All ages	468	25.8	28.4	27.6
Households with dependent children: Age 0-4	147	8.1	10.2	10.0
Households with dependent children and no adult in employment	42	2.3	2.9	3.4
Households with one person in household with long-term health problem or disability with dependent children	75	4.1	4.4	4.5

Lone parent households with dependent children by employment status	Number of households	% of total households		
		This Area	High Peak	Derbyshire
Lone parent households with dependent children:				
- Male lone parent: In part-time employment	1	0.1	0.1	0.1
- Male lone parent: In full-time employment	7	0.4	0.5	0.4
- Male lone parent: Not in employment	1	0.1	0.2	0.2
- Female lone parent: In part-time employment	40	2.2	2.2	2.1
- Female lone parent: In full-time employment	25	1.4	1.5	1.3
- Female lone parent: Not in employment	30	1.7	1.9	2.0
Total lone parent households with dependent children	104	5.7	6.4	6.1

Households with dependent children



Lone parent households by employment status



2011 Census: Households Profile

Chapel West

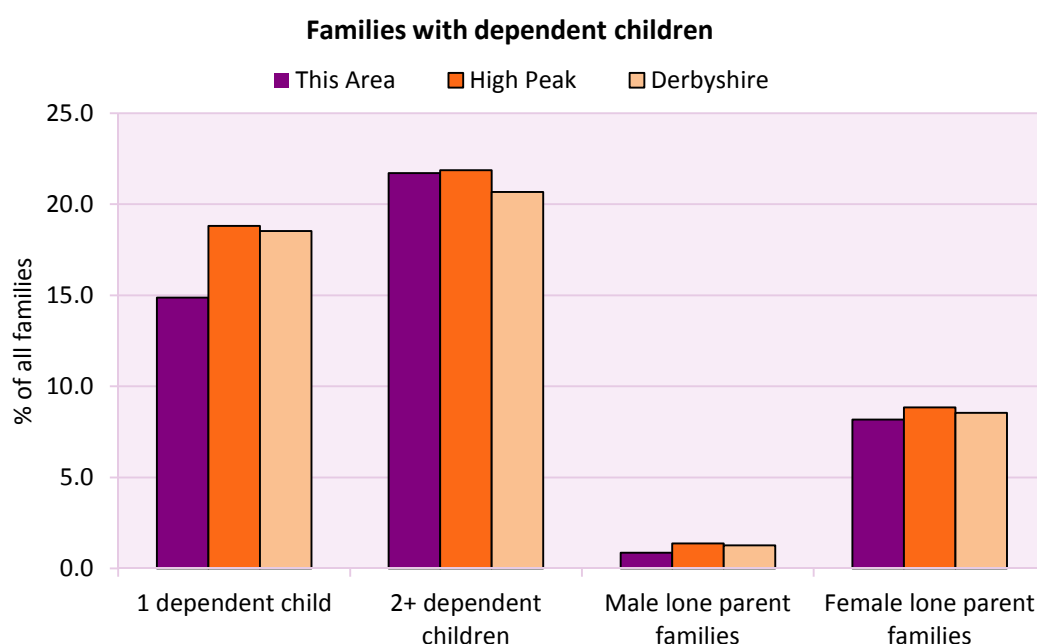
Area type and code
Ward (E05003394)

Dependent children continued

Families with dependent children	Number of families	% of all families		
		This Area	High Peak	Derbyshire
Families with 1 dependent child	189	14.9	18.8	18.5
Families with 2 or more dependent children	276	21.7	21.9	20.7
Male lone parent families	11	0.9	1.4	1.3
Female lone parent families	104	8.2	8.8	8.6

Families with dependent children by employment status	Number of parents aged 16+	% of population 16+		
		This Area	High Peak	Derbyshire
Couple families with dependent children:				
- 1 adult in employment	122	6.7	4.5	4.8
- 2 adults in employment	560	30.6	16.8	15.7
- No adult in employment	18	1.0	0.8	1.2
Lone parent families with dependent children:				
- 1 adult in employment	80	4.4	2.5	2.3
- No adult in employment	35	1.9	1.2	1.3

Total dependent children	Dependent children		
	This Area	High Peak	Derbyshire
Total dependent children	826	19,089	157,571



For an **explanation** of the various terms used in these tables, please see the accompanying **Glossary**.

There is also a **Summary** profile, and there are other extension profiles covering the following topics:- **Change Over Time, Economic Activity, Equalities, Health, Households and Housing**.

Profiles in Adobe Acrobat (pdf) format can be downloaded from the Derbyshire Observatory web site, which also provides interactive maps and charts - <http://observatory.derbyshire.gov.uk>

Version: 1.0