

South Derbyshire 008

Area type and code
MSOA (E02004125)

Population

Population change since 2001

Change in numbers	% change		
	This Area	S. Derbyshire	Derbyshire
+694	+8.4	+16.0	+4.8

2011 Census Table KS101EW and 2001 Census Table S001

Residents

	Number
Total resident population	8,988
- in households	8,950
- in communal establishments	38

Table KS101EW

Density of population

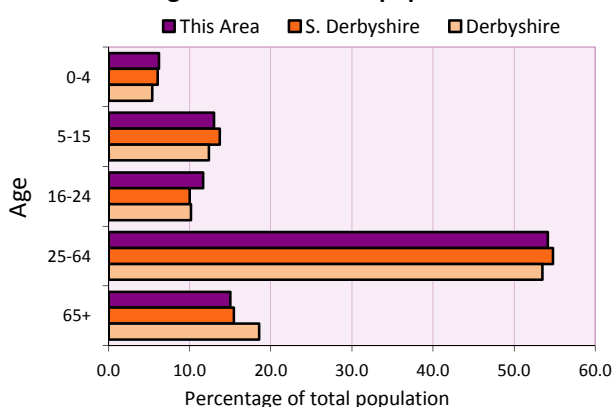
Area (hectares)	Persons per hectare		
	This Area	S. Derbyshire	Derbyshire
693	13.0	2.8	3.0

Table KS101EW

Age structure	Number of people	% of total population		
		This Area	S. Derbyshire	Derbyshire
0-4 years	558	6.2	6.1	5.4
5-15 years	1,170	13.0	13.7	12.4
16-24 years	1,046	11.6	10.0	10.2
25-64 years	4,866	54.1	54.8	53.5
65 and over	1,348	15.0	15.5	18.6

Table KS102EW

Age structure of the population



Households

Total households

Number	Average household size (persons)		
	This Area	S. Derbyshire	Derbyshire
3,775	2.38	2.43	2.31

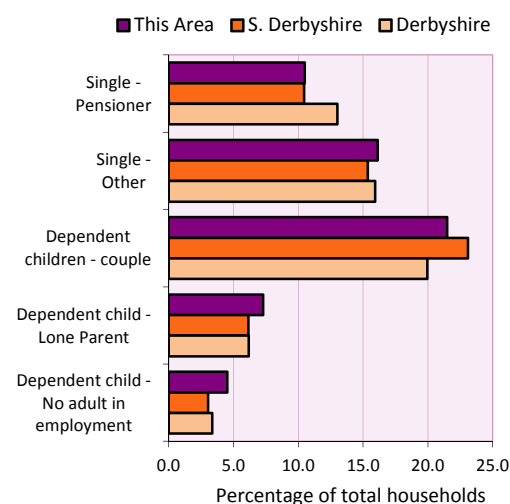
Table KS101EW and KS403EW

Household types

Number	% of total households			
	This Area	S. Derbyshire	Derbyshire	
Single person households	1,005	26.6	25.8	28.9
Pensioner	396	10.5	10.4	13.0
Other	609	16.1	15.4	15.9
Households with dependent children				
All	1,148	30.4	30.9	27.6
Couple	811	21.5	23.1	19.9
Lone parent	275	7.3	6.1	6.2
No adult in employment	170	4.5	3.0	3.4
One person with a long-term health problem - or disability	212	5.6	4.6	4.5

Table KS105EW and KS106EW

Household types



Car/van ownership

Number of households	% of total households			
	This Area	S. Derbyshire	Derbyshire	
No car or van	752	19.9	13.5	20.1

Table KS404EW

2011 Census: Summary Profile

South Derbyshire 008

Area type and code
MSOA (E02004125)

Accommodation

Tenure	Number of households	% of total households		
		This Area	S. Derbyshire	Derbyshire
Owner-occupied	2,664	70.6	75.8	71.4
Rented from council/housing association	551	14.6	9.9	15.3
Private/other rented	521	13.8	13.0	12.0
Living rent free	39	1.0	1.2	1.3

Table KS402EW

Amenities	Number of households	% of total households		
		This Area	S. Derbyshire	Derbyshire
Overcrowded households	105	2.8	3.2	3.7
Households without central heating	101	2.7	2.0	2.0

Table KS403EW

Total household spaces	3,903
-------------------------------	--------------

Table KS401EW

Type of accommodation	Number of household spaces	% of total household spaces		
		This Area	S. Derbyshire	Derbyshire
Detached	1,211	31.0	39.8	31.8
Semi-detached	1,842	47.2	34.9	38.7
Terraced	628	16.1	18.1	20.6
Flat/maisonette/apartment	219	5.6	6.5	8.6
Other	3	0.1	0.7	0.3

Table KS401EW

Marital status

Marital status	Number of people	% of people aged 16+		
		This Area	S. Derbyshire	Derbyshire
Single	2,232	30.7	28.7	29.3
Married	3,594	49.5	52.7	50.5
Same-sex civil partnership	20	0.3	0.2	0.2
Separated	192	2.6	2.5	2.4
Divorced	721	9.9	9.4	9.9
Widowed / surviving partner	501	6.9	6.6	7.7

Table KS103EW

Health

Health	Number of people	% of total population		
		This Area	S. Derbyshire	Derbyshire
People whose day-to-day activities are limited	1,934	21.5	17.5	20.4
People with 'bad' general health	625	7.0	4.9	6.2
People providing unpaid care	1,077	12.0	11.1	12.1

Table KS301EW

2011 Census: Summary Profile

South Derbyshire 008

Area type and code
MSOA (E02004125)

Ethnicity

Ethnic group	Number of people	% of total population		
		This Area	S. Derbyshire	Derbyshire
White British	8,679	96.6	94.0	95.8
Black and Minority Ethnic (BME)	309	3.4	6.0	4.2
White Other	139	1.5	1.7	1.7
Mixed/multiple ethnic groups	90	1.0	1.1	0.9
Asian/Asian British	57	0.6	2.5	1.1
Black/African/Caribbean/Black British	16	0.2	0.4	0.4
Other ethnic group	7	0.1	0.1	0.1

Table KS201EW

Religion

Religion	Number of people	% of total population		
		This Area	S. Derbyshire	Derbyshire
Christian	5,542	61.7	64.0	63.6
Buddhist	12	0.1	0.2	0.2
Hindu	1	0.0	0.3	0.2
Jewish	2	0.0	0.0	0.0
Muslim	17	0.2	0.3	0.3
Sikh	34	0.4	1.5	0.3
Other religions	22	0.2	0.4	0.4
No religion	2,793	31.1	26.8	28.0
Not stated	565	6.3	6.6	7.0

Table KS209EW

Migration

Country of birth by year of arrival in the UK	Number of people	% of total residents		
		This Area	S. Derbyshire	Derbyshire
From within the UK total	8,763	97.5	96.1	96.7
From outside the UK total	225	2.5	3.9	3.3
<i>of which</i>				
- Ireland	29	0.3	0.3	0.3
- Other EU country	75	0.8	0.9	0.9
- European (Non-EU country)	46	0.5	0.2	0.1
- Other parts of the world	75	0.8	2.2	1.6

Table LC2804EW

Length of residence in the UK	Number of people	% of total residents		
		This Area	S. Derbyshire	Derbyshire
Less than 2 years	18	0.2	0.3	0.3
2 years or more but less than 5 years	17	0.2	0.4	0.5
5 years or more but less than 10 years	41	0.5	0.7	0.6
10 years or more	149	1.7	2.5	2.0
Born in the UK	8,763	97.5	96.1	96.7

Table QS803EW

2011 Census: Summary Profile

South Derbyshire 008

Area type and code
MSOA (E02004125)

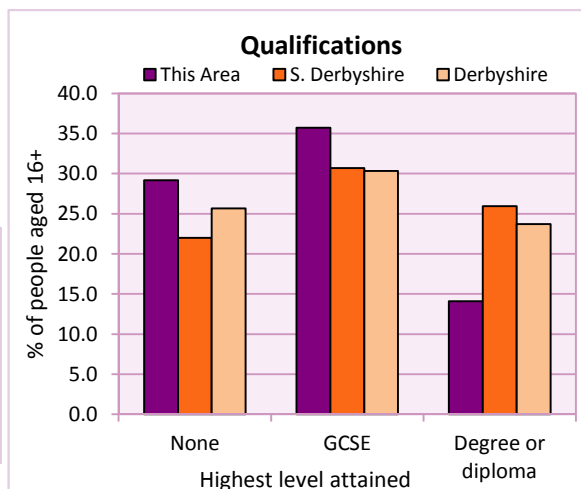
Education

Full-time students	Number	% of population in age group		
		This Area	S. Derbyshire	Derbyshire
aged 16-17	232	85.9	89.1	86.3
aged 18-74	201	3.1	3.0	2.9

Table KS501EW

Qualifications	People (aged 16+)	% of all people aged 16+		
		This Area	S. Derbyshire	Derbyshire
No qualifications	2,118	29.2	22.0	25.7
Highest level attained				
GCSE	2,592	35.7	30.7	30.3
Degree or diploma	1,024	14.1	26.0	23.7

Table KS501EW



Workforce

Economic activity	People aged 16-74								
	This Area			South Derbyshire			Derbyshire		
	Males	Females	All	Males	Females	All	Males	Females	All
Economically active									
- number	2,515	2,157	4,672	26,971	23,387	50,358	211,349	185,704	397,053
- rate (%)	75.2	63.9	69.5	78.0	67.1	72.5	74.8	65.1	69.9
All unemployed									
- number	171	127	298	1,236	889	2,125	13,541	8,665	22,206
- rate (%)	5.1	3.8	4.4	3.6	2.5	3.1	4.8	3.0	3.9
Economically inactive									
- number	829	1,218	2,047	7,615	11,477	19,092	71,240	99,505	170,745
- rate (%)	24.8	36.1	30.5	22.0	32.9	27.5	25.2	34.9	30.1

Table KS601EW KS602EW and KS603EW

Hours worked	% of people aged 16-74 in employment					
	Full time (more than 30 hrs)			Part time (30 hrs or less)		
	This Area	S. Derbyshire	Derbyshire	This Area	S. Derbyshire	Derbyshire
All	71.7	72.1	70.3	28.3	27.9	29.7
Males	90.0	88.4	86.5	10.0	11.6	13.5
Females	50.5	53.5	52.1	49.6	46.5	47.9

Table KS604EW

People travelling to work	This Area	S. Derbyshire	Derbyshire
- works mainly at or from home %	6.6	10.8	10.5
- by car or van %	71.3	71.5	65.6
- by public transport or taxi %	4.8	3.6	6.6
- by all other methods of travel %	17.3	14.2	17.4
Average distance travelled km	13.1	16.4	15.2

Table LC7101EW and QS702EW

2011 Census: Summary Profile

South Derbyshire 008

Area type and code
MSOA (E02004125)

Workforce (continued)

Industry (people aged 16-74 in employment)	Number of workers	% of people aged 16-74 in employment		
		This Area	S. Derbyshire	Derbyshire
Agriculture, forestry and fishing	20	0.5	1.2	1.0
Mining, quarrying and utilities	93	2.2	1.9	1.9
Manufacturing	805	18.6	17.1	14.9
Construction	382	8.8	7.8	8.5
Wholesale and retail	848	19.6	16.2	16.6
Business services	1,020	23.6	25.8	25.1
Public services	937	21.7	25.6	27.5
Other services	214	5.0	4.3	4.5

Chart category

Other

Other

Manufacturing

Other

Services

Services

Services

Services

Table KS605EW

Occupation (people aged 16-74 in employment)	Number of workers	% of people aged 16-74 in employment		
		This Area	S. Derbyshire	Derbyshire
Managers, directors & senior officials	346	8.0	12.1	10.9
Professional	371	8.6	16.1	15.1
Associate professional & technical	392	9.1	11.8	11.0
Administrative & secretarial	493	11.4	10.9	10.9
Skilled trades	638	14.8	12.4	13.3
Caring, leisure & other services	451	10.4	8.8	9.6
Sales & customer service	411	9.5	7.1	7.9
Process, plant & machine operatives	593	13.7	9.8	9.6
Elementary occupations	624	14.4	10.9	11.7

Chart category

Managerial & professional

Managerial & professional

Managerial & professional

Other non-manual

Manual

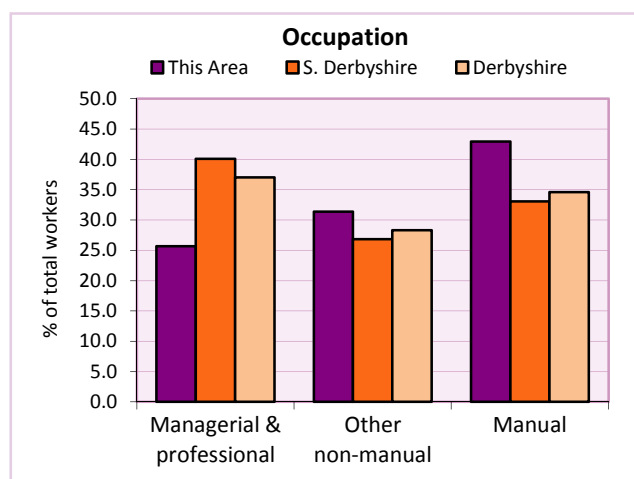
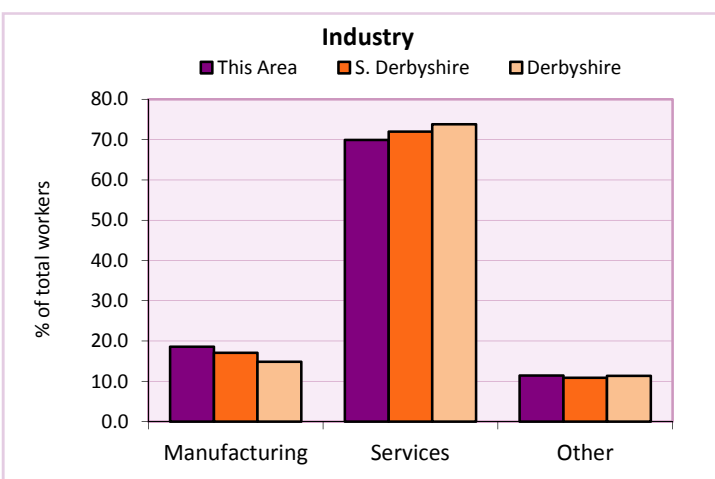
Other non-manual

Other non-manual

Manual

Manual

Table KS608EW



For an **explanation** of the various terms used in these tables, please see the accompanying **Glossary**.

Extension profiles covering the following topics in more detail will also be available:

Population, Economic Activity, Equalities, Health, Households, and Housing.

Profiles in Adobe Acrobat (pdf) format can be downloaded from the Derbyshire Observatory web site, which also provides interactive maps and charts - <http://observatory.derbyshire.gov.uk>

Please note that figures vary across the Census Profiles as different denominators are used. 2011 Census Table reference numbers are provided beneath each individual table in the Census Profiles should you require further information.

Version: 6.31