

## Buxton North and East

Area type and code  
Electoral Division (ED\_H01)

### Population

#### Population change since 2001

Change in numbers	% change		
	This Area	High Peak	Derbyshire
-2	-0.0	+1.6	+4.8

2011 Census Table KS101EW and 2001 Census Table S001

#### Residents

	Number
Total resident population	12,042
- in households	12,010
- in communal establishments	32

Table KS101EW

#### Density of population

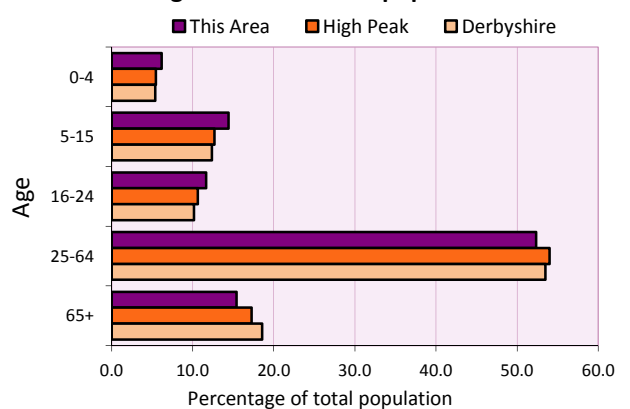
Area (hectares)	Persons per hectare		
	This Area	High Peak	Derbyshire
8,570	1.4	1.7	3.0

Table KS101EW

Age structure	Number of people	% of total population		
		This Area	High Peak	Derbyshire
0-4 years	744	6.2	5.5	5.4
5-15 years	1,738	14.4	12.7	12.4
16-24 years	1,404	11.7	10.6	10.2
25-64 years	6,303	52.3	54.0	53.5
65 and over	1,853	15.4	17.2	18.6

Table KS102EW

#### Age structure of the population



### Households

#### Total households

Number	Average household size (persons)		
	This Area	High Peak	Derbyshire
5,053	2.38	2.33	2.31

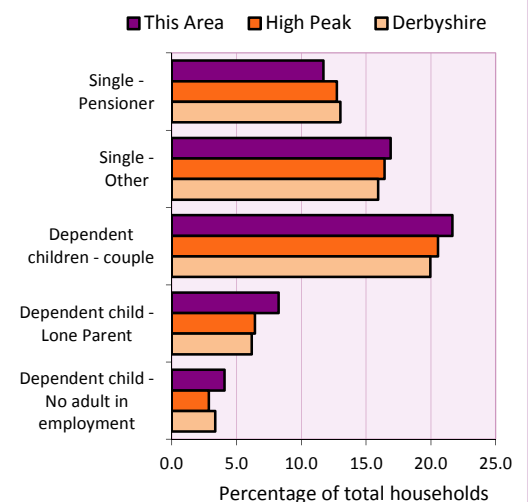
Table KS101EW and KS403EW

#### Household types

Number	% of total households			
	This Area	High Peak	Derbyshire	
Single person households	1,444	28.6	29.2	28.9
Pensioner	591	11.7	12.7	13.0
Other	853	16.9	16.4	15.9
Households with dependent children				
All	1,590	31.5	28.4	27.6
Couple	1,094	21.7	20.5	19.9
Lone parent	416	8.2	6.4	6.2
No adult in employment	206	4.1	2.9	3.4
One person with a long-term health problem - or disability	275	5.4	4.4	4.5

Table KS105EW and KS106EW

#### Household types



#### Car/van ownership

Number of households	% of total households			
	This Area	High Peak	Derbyshire	
No car or van	1,191	23.6	19.6	20.1

Table KS404EW

# 2011 Census: Summary Profile

## Buxton North and East

Area type and code  
Electoral Division (ED\_H01)

### Accommodation

Tenure	Number of households	% of total households		
		This Area	High Peak	Derbyshire
Owner-occupied	3,308	65.5	72.6	71.4
Rented from council/housing association	1,007	19.9	12.7	15.3
Private/other rented	678	13.4	13.4	12.0
Living rent free	60	1.2	1.2	1.3

Table KS402EW

Amenities	Number of households	% of total households		
		This Area	High Peak	Derbyshire
Overcrowded households	322	6.4	4.8	3.7
Households without central heating	111	2.2	2.3	2.0

Table KS403EW

<b>Total household spaces</b>	<b>5,236</b>
-------------------------------	--------------

Table KS401EW

Type of accommodation	Number of household spaces	% of total household spaces		
		This Area	High Peak	Derbyshire
Detached	584	11.2	23.5	31.8
Semi-detached	2,301	43.9	29.2	38.7
Terraced	1,716	32.8	34.4	20.6
Flat/maisonette/apartment	617	11.8	12.6	8.6
Other	18	0.3	0.2	0.3

Table KS401EW

### Marital status

Marital status	Number of people	% of people aged 16+		
		This Area	High Peak	Derbyshire
Single	3,244	33.9	30.9	29.3
Married	4,331	45.3	49.1	50.5
Same-sex civil partnership	17	0.2	0.2	0.2
Separated	233	2.4	2.4	2.4
Divorced	1,054	11.0	9.9	9.9
Widowed / surviving partner	681	7.1	7.4	7.7

Table KS103EW

### Health

Health	Number of people	% of total population		
		This Area	High Peak	Derbyshire
People whose day-to-day activities are limited	2,226	18.5	18.1	20.4
People with 'bad' general health	699	5.8	5.2	6.2
People providing unpaid care	1,374	11.4	11.3	12.1

Table KS301EW

# 2011 Census: Summary Profile

## Buxton North and East

Area type and code  
Electoral Division (ED\_H01)

### Ethnicity

Ethnic group	Number of people	% of total population		
		This Area	High Peak	Derbyshire
White British	11,614	96.4	95.9	95.8
Black and Minority Ethnic (BME)	428	3.6	4.1	4.2
White Other	220	1.8	2.0	1.7
Mixed/multiple ethnic groups	110	0.9	1.0	0.9
Asian/Asian British	67	0.6	0.8	1.1
Black/African/Caribbean/Black British	25	0.2	0.2	0.4
Other ethnic group	6	0.0	0.1	0.1

Table KS201EW

### Religion

Religion	Number of people	% of total population		
		This Area	High Peak	Derbyshire
Christian	7,760	64.4	64.1	63.6
Buddhist	39	0.3	0.3	0.2
Hindu	8	0.1	0.1	0.2
Jewish	1	0.0	0.0	0.0
Muslim	15	0.1	0.2	0.3
Sikh	5	0.0	0.0	0.3
Other religions	44	0.4	0.4	0.4
No religion	3,288	27.3	27.6	28.0
Not stated	882	7.3	7.2	7.0

Table KS209EW

### Migration

Country of birth by year of arrival in the UK	Number of people	% of total residents		
		This Area	High Peak	Derbyshire
From within the UK total	11,669	96.9	96.4	96.7
From outside the UK total	373	3.1	3.6	3.3
<i>of which</i>				
- Ireland	55	0.5	0.5	0.3
- Other EU country	124	1.0	0.8	0.9
- European (Non-EU country)	74	0.6	0.2	0.1
- Other parts of the world	120	1.0	1.7	1.6

Table LC2804EW

Length of residence in the UK	Number of people	% of total residents		
		This Area	High Peak	Derbyshire
Less than 2 years	33	0.3	0.2	0.3
2 years or more but less than 5 years	83	0.7	0.5	0.5
5 years or more but less than 10 years	62	0.5	0.6	0.6
10 years or more	195	1.6	2.2	2.0
Born in the UK	11,669	96.9	96.4	96.7

Table QS803EW

# 2011 Census: Summary Profile

## Buxton North and East

Area type and code  
Electoral Division (ED\_H01)

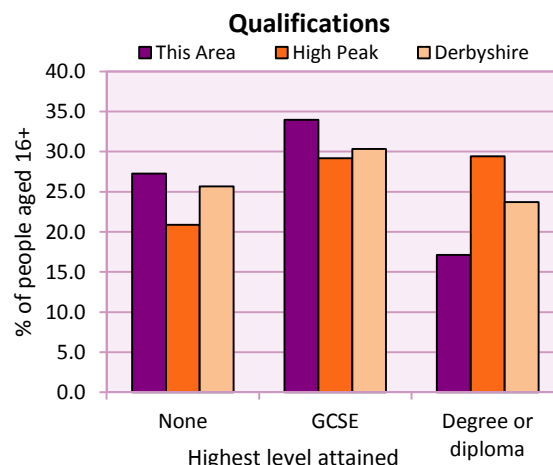
### Education

Full-time students	Number	% of population in age group		
		This Area	High Peak	Derbyshire
aged 16-17	261	81.1	88.0	86.3
aged 18-74	340	4.0	3.9	2.9

Table KS501EW

Qualifications	People (aged 16+)	% of all people aged 16+		
		This Area	High Peak	Derbyshire
No qualifications	2,607	27.3	20.9	25.7
Highest level attained				
GCSE	3,248	34.0	29.2	30.3
Degree or diploma	1,636	17.1	29.4	23.7

Table KS501EW



### Workforce

Economic activity	People aged 16-74								
	This Area			High Peak			Derbyshire		
	Males	Females	All	Males	Females	All	Males	Females	All
Economically active									
- number	3,402	2,958	6,360	25,645	22,915	48,560	211,349	185,704	397,053
- rate (%)	77.4	68.0	72.7	76.3	67.8	72.1	74.8	65.1	69.9
All unemployed									
- number	237	147	384	1,563	1,013	2,576	13,541	8,665	22,206
- rate (%)	5.4	3.4	4.4	4.7	3.0	3.8	4.8	3.0	3.9
Economically inactive									
- number	992	1,394	2,386	7,965	10,864	18,829	71,240	99,505	170,745
- rate (%)	22.6	32.0	27.3	23.7	32.2	27.9	25.2	34.9	30.1

Table KS601EW KS602EW and KS603EW

Hours worked	% of people aged 16-74 in employment					
	Full time (more than 30 hrs)			Part time (30 hrs or less)		
	This Area	High Peak	Derbyshire	This Area	High Peak	Derbyshire
All	67.7	70.0	70.3	32.3	30.0	29.7
Males	86.5	85.6	86.5	13.5	14.4	13.5
Females	46.5	52.8	52.1	53.5	47.2	47.9

Table KS604EW

People travelling to work	This Area	High Peak	Derbyshire
- works mainly at or from home %	8.7	12.2	10.5
- by car or van %	58.8	59.4	65.6
- by public transport or taxi %	4.0	8.4	6.6
- by all other methods of travel %	28.5	20.0	17.4
Average distance travelled km	11.7	15.7	15.2

Table LC7101EW and QS702EW

# 2011 Census: Summary Profile

## Buxton North and East

Area type and code  
Electoral Division (ED\_H01)

### Workforce (continued)

Industry (people aged 16-74 in employment)	Number of workers	% of people aged 16-74 in employment		
		This Area	High Peak	Derbyshire
Agriculture, forestry and fishing	75	1.3	1.0	1.0
Mining, quarrying and utilities	260	4.4	2.0	1.9
Manufacturing	910	15.4	13.3	14.9
Construction	460	7.8	7.6	8.5
Wholesale and retail	982	16.6	14.4	16.6
Business services	1,565	26.5	27.4	25.1
Public services	1,397	23.6	29.6	27.5
Other services	263	4.4	4.7	4.5

#### Chart category

Other

Other

Manufacturing

Other

Services

Services

Services

Services

Table KS605EW

Occupation (people aged 16-74 in employment)	Number of workers	% of people aged 16-74 in employment		
		This Area	High Peak	Derbyshire
Managers, directors & senior officials	431	7.3	11.3	10.9
Professional	568	9.6	17.8	15.1
Associate professional & technical	487	8.2	11.7	11.0
Administrative & secretarial	520	8.8	10.1	10.9
Skilled trades	934	15.8	12.6	13.3
Caring, leisure & other services	673	11.4	10.0	9.6
Sales & customer service	530	9.0	7.0	7.9
Process, plant & machine operatives	862	14.6	9.0	9.6
Elementary occupations	907	15.3	10.4	11.7

#### Chart category

Managerial & professional

Managerial & professional

Managerial & professional

Other non-manual

Manual

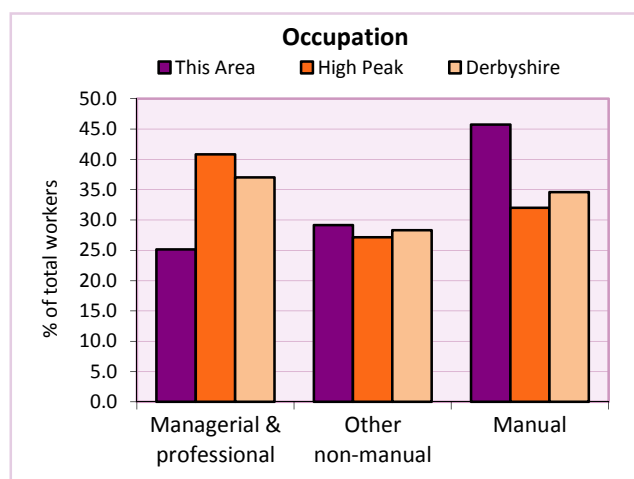
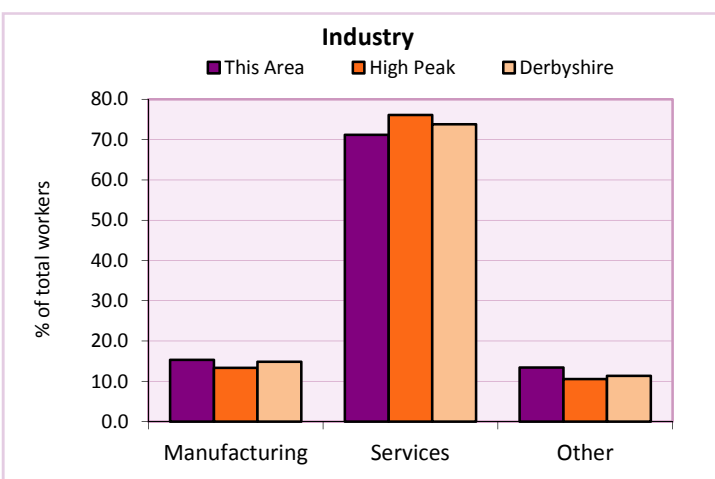
Other non-manual

Other non-manual

Manual

Manual

Table KS608EW



For an **explanation** of the various terms used in these tables, please see the accompanying **Glossary**.

**Extension profiles** covering the following topics in more detail will also be available:

**Population, Economic Activity, Equalities, Health, Households, and Housing.**

**Profiles** in Adobe Acrobat (pdf) format can be downloaded from the Derbyshire Observatory web site, which also provides interactive maps and charts - <http://observatory.derbyshire.gov.uk>

**Please note that figures vary across the Census Profiles as different denominators are used. 2011 Census Table reference numbers are provided beneath each individual table in the Census Profiles should you require further information.**

Version: 6.31