

Chapel and Hope Valley

Area type and code
Electoral Division (ED_H03)

Population

Population change since 2001

Change in numbers	% change		
	This Area	High Peak	Derbyshire
+71	+0.6	+1.6	+4.8

2011 Census Table KS101EW and 2001 Census Table S001

Residents

	Number
Total resident population	11,391
- in households	11,322
- in communal establishments	69

Table KS101EW

Density of population

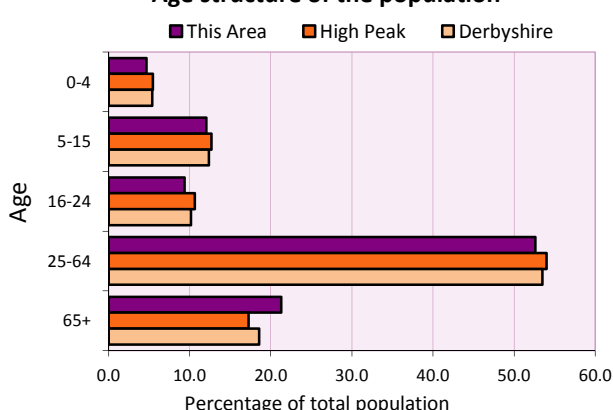
Area (hectares)	Persons per hectare		
	This Area	High Peak	Derbyshire
21,036	0.5	1.7	3.0

Table KS101EW

Age structure	Number of people	% of total population		
		This Area	High Peak	Derbyshire
0-4 years	532	4.7	5.5	5.4
5-15 years	1,372	12.0	12.7	12.4
16-24 years	1,069	9.4	10.6	10.2
25-64 years	5,992	52.6	54.0	53.5
65 and over	2,426	21.3	17.2	18.6

Table KS102EW

Age structure of the population



Households

Total households

Number	Average household size (persons)		
	This Area	High Peak	Derbyshire
4,945	2.30	2.33	2.31

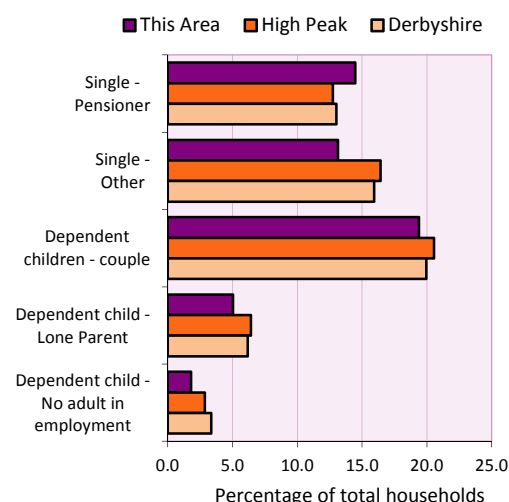
Table KS101EW and KS403EW

Household types

Household types	Number	% of total households		
		This Area	High Peak	Derbyshire
Single person households	1,365	27.6	29.2	28.9
Pensioner	716	14.5	12.7	13.0
Other	649	13.1	16.4	15.9
Households with dependent children				
All	1,264	25.6	28.4	27.6
Couple	959	19.4	20.5	19.9
Lone parent	249	5.0	6.4	6.2
No adult in employment	89	1.8	2.9	3.4
One person with a long-term health problem - or disability	191	3.9	4.4	4.5

Table KS105EW and KS106EW

Household types



Car/van ownership

	Number of households	% of total households		
		This Area	High Peak	Derbyshire
No car or van	696	14.1	19.6	20.1

Table KS404EW

2011 Census: Summary Profile

Chapel and Hope Valley

Area type and code
Electoral Division (ED_H03)

Accommodation

Tenure	Number of households	% of total households		
		This Area	High Peak	Derbyshire
Owner-occupied	3,823	77.3	72.6	71.4
Rented from council/housing association	503	10.2	12.7	15.3
Private/other rented	545	11.0	13.4	12.0
Living rent free	74	1.5	1.2	1.3

Table KS402EW

Amenities	Number of households	% of total households		
		This Area	High Peak	Derbyshire
Overcrowded households	195	3.9	4.8	3.7
Households without central heating	105	2.1	2.3	2.0

Table KS403EW

Total household spaces	5,246
-------------------------------	--------------

Table KS401EW

Type of accommodation	Number of household spaces	% of total household spaces		
		This Area	High Peak	Derbyshire
Detached	1,659	31.6	23.5	31.8
Semi-detached	1,958	37.3	29.2	38.7
Terraced	1,176	22.4	34.4	20.6
Flat/maisonette/apartment	445	8.5	12.6	8.6
Other	8	0.2	0.2	0.3

Table KS401EW

Marital status

Marital status	Number of people	% of people aged 16+		
		This Area	High Peak	Derbyshire
Single	2,481	26.2	30.9	29.3
Married	5,145	54.2	49.1	50.5
Same-sex civil partnership	31	0.3	0.2	0.2
Separated	215	2.3	2.4	2.4
Divorced	844	8.9	9.9	9.9
Widowed / surviving partner	771	8.1	7.4	7.7

Table KS103EW

Health

Health	Number of people	% of total population		
		This Area	High Peak	Derbyshire
People whose day-to-day activities are limited	2,185	19.2	18.1	20.4
People with 'bad' general health	549	4.8	5.2	6.2
People providing unpaid care	1,471	12.9	11.3	12.1

Table KS301EW

2011 Census: Summary Profile

Chapel and Hope Valley

Area type and code
Electoral Division (ED_H03)

Ethnicity

Ethnic group	Number of people	% of total population		
		This Area	High Peak	Derbyshire
White British	11,028	96.8	95.9	95.8
Black and Minority Ethnic (BME)	363	3.2	4.1	4.2
White Other	197	1.7	2.0	1.7
Mixed/multiple ethnic groups	74	0.6	1.0	0.9
Asian/Asian British	61	0.5	0.8	1.1
Black/African/Caribbean/Black British	18	0.2	0.2	0.4
Other ethnic group	13	0.1	0.1	0.1

Table KS201EW

Religion

Religion	Number of people	% of total population		
		This Area	High Peak	Derbyshire
Christian	7,461	65.5	64.1	63.6
Buddhist	27	0.2	0.3	0.2
Hindu	10	0.1	0.1	0.2
Jewish	3	0.0	0.0	0.0
Muslim	24	0.2	0.2	0.3
Sikh	0	0.0	0.0	0.3
Other religions	43	0.4	0.4	0.4
No religion	2,947	25.9	27.6	28.0
Not stated	876	7.7	7.2	7.0

Table KS209EW

Migration

Country of birth by year of arrival in the UK	Number of people	% of total residents		
		This Area	High Peak	Derbyshire
From within the UK total	11,027	96.8	96.4	96.7
From outside the UK total	364	3.2	3.6	3.3
of which				
- Ireland	54	0.5	0.5	0.3
- Other EU country	60	0.5	0.8	0.9
- European (Non-EU country)	70	0.6	0.2	0.1
- Other parts of the world	180	1.6	1.7	1.6

Table LC2804EW

Length of residence in the UK	Number of people	% of total residents		
		This Area	High Peak	Derbyshire
Less than 2 years	29	0.3	0.2	0.3
2 years or more but less than 5 years	41	0.4	0.5	0.5
5 years or more but less than 10 years	55	0.5	0.6	0.6
10 years or more	239	2.1	2.2	2.0
Born in the UK	11,027	96.8	96.4	96.7

Table QS803EW

2011 Census: Summary Profile

Chapel and Hope Valley

Area type and code
Electoral Division (ED_H03)

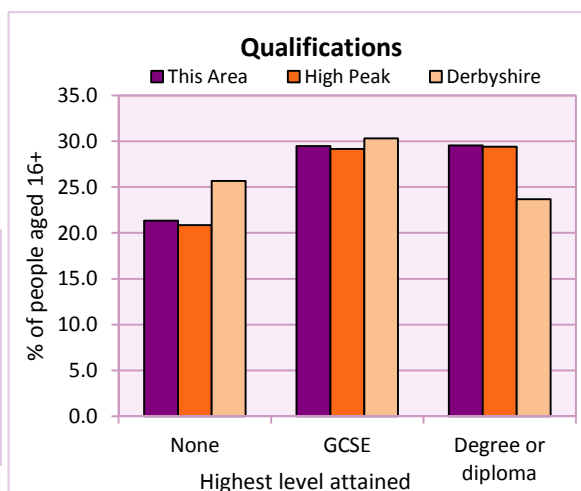
Education

Full-time students	Number	% of population in age group		
		This Area	High Peak	Derbyshire
aged 16-17	263	89.2	88.0	86.3
aged 18-74	221	2.7	3.9	2.9

Table KS501EW

Qualifications	People (aged 16+)	% of all people aged 16+		
		This Area	High Peak	Derbyshire
No qualifications	2,024	21.3	20.9	25.7
Highest level attained				
GCSE	2,795	29.5	29.2	30.3
Degree or diploma	2,802	29.5	29.4	23.7

Table KS501EW



Workforce

Economic activity	People aged 16-74								
	This Area			High Peak			Derbyshire		
	Males	Females	All	Males	Females	All	Males	Females	All
Economically active									
- number	3,227	2,856	6,083	25,645	22,915	48,560	211,349	185,704	397,053
- rate (%)	77.2	68.4	72.8	76.3	67.8	72.1	74.8	65.1	69.9
All unemployed									
- number	131	82	213	1,563	1,013	2,576	13,541	8,665	22,206
- rate (%)	3.1	2.0	2.5	4.7	3.0	3.8	4.8	3.0	3.9
Economically inactive									
- number	954	1,319	2,273	7,965	10,864	18,829	71,240	99,505	170,745
- rate (%)	22.8	31.6	27.2	23.7	32.2	27.9	25.2	34.9	30.1

Table KS601EW KS602EW and KS603EW

Hours worked	% of people aged 16-74 in employment					
	Full time (more than 30 hrs)			Part time (30 hrs or less)		
	This Area	High Peak	Derbyshire	This Area	High Peak	Derbyshire
All	67.5	70.0	70.3	32.5	30.0	29.7
Males	83.6	85.6	86.5	16.4	14.4	13.5
Females	49.4	52.8	52.1	50.6	47.2	47.9

Table KS604EW

People travelling to work	This Area	High Peak	Derbyshire
- works mainly at or from home %	15.8	12.2	10.5
- by car or van %	59.8	59.4	65.6
- by public transport or taxi %	5.9	8.4	6.6
- by all other methods of travel %	18.5	20.0	17.4
Average distance travelled km	16.6	15.7	15.2

Table LC7101EW and QS702EW

2011 Census: Summary Profile

Chapel and Hope Valley

Area type and code
Electoral Division (ED_H03)

Workforce (continued)

Industry (people aged 16-74 in employment)	Number of workers	% of people aged 16-74 in employment		
		This Area	High Peak	Derbyshire
Agriculture, forestry and fishing	143	2.4	1.0	1.0
Mining, quarrying and utilities	108	1.8	2.0	1.9
Manufacturing	824	14.1	13.3	14.9
Construction	426	7.3	7.6	8.5
Wholesale and retail	814	13.9	14.4	16.6
Business services	1,597	27.3	27.4	25.1
Public services	1,635	28.0	29.6	27.5
Other services	300	5.1	4.7	4.5

Chart category

Other

Other

Manufacturing

Other

Services

Services

Services

Services

Table KS605EW

Occupation (people aged 16-74 in employment)	Number of workers	% of people aged 16-74 in employment		
		This Area	High Peak	Derbyshire
Managers, directors & senior officials	694	11.9	11.3	10.9
Professional	1,022	17.5	17.8	15.1
Associate professional & technical	630	10.8	11.7	11.0
Administrative & secretarial	564	9.6	10.1	10.9
Skilled trades	831	14.2	12.6	13.3
Caring, leisure & other services	541	9.3	10.0	9.6
Sales & customer service	356	6.1	7.0	7.9
Process, plant & machine operatives	559	9.6	9.0	9.6
Elementary occupations	650	11.1	10.4	11.7

Chart category

Managerial & professional

Managerial & professional

Managerial & professional

Other non-manual

Manual

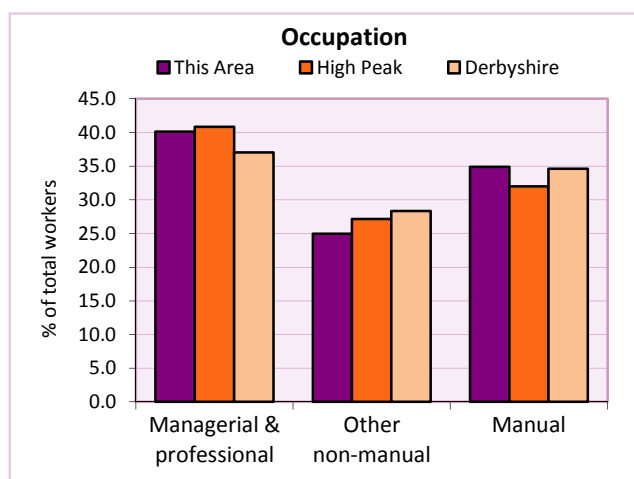
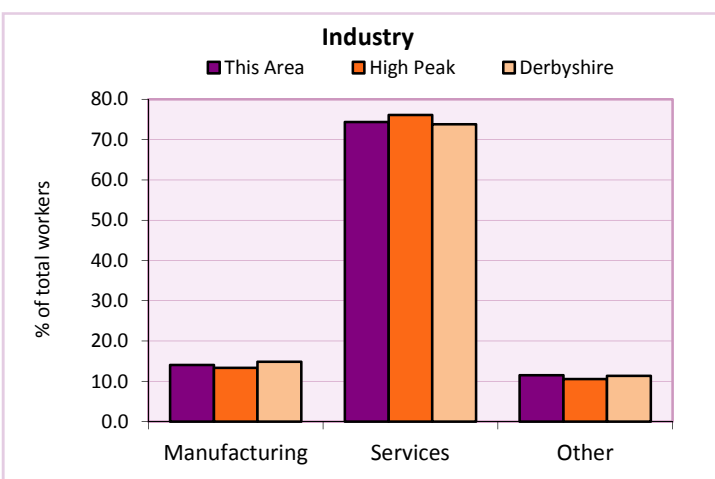
Other non-manual

Other non-manual

Manual

Manual

Table KS608EW



For an **explanation** of the various terms used in these tables, please see the accompanying **Glossary**.

Extension profiles covering the following topics in more detail will also be available:

Population, Economic Activity, Equalities, Health, Households, and Housing.

Profiles in Adobe Acrobat (pdf) format can be downloaded from the Derbyshire Observatory web site, which also provides interactive maps and charts - <http://observatory.derbyshire.gov.uk>

Please note that figures vary across the Census Profiles as different denominators are used. 2011 Census Table reference numbers are provided beneath each individual table in the Census Profiles should you require further information.

Version: 6.31