

Etherow

Area type and code
Electoral Division (ED_H04)

Population

Population change since 2001

Change in numbers	% change		
	This Area	High Peak	Derbyshire
-317	-2.8	+1.6	+4.8

2011 Census Table KS101EW and 2001 Census Table S001

Residents

	Number
Total resident population	11,066
- in households	10,950
- in communal establishments	116

Table KS101EW

Density of population

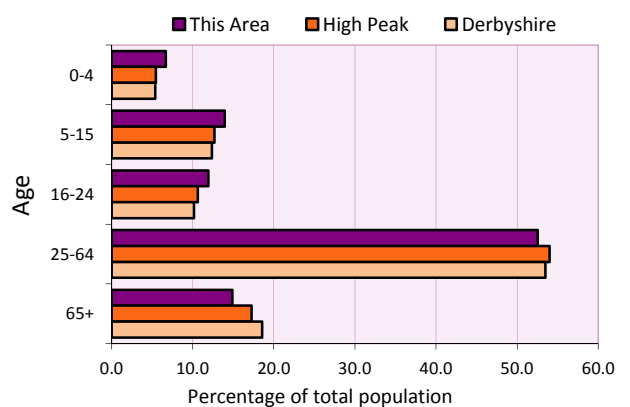
Area (hectares)	Persons per hectare		
	This Area	High Peak	Derbyshire
5,128	2.2	1.7	3.0

Table KS101EW

Age structure	Number of people	% of total population		
		This Area	High Peak	Derbyshire
0-4 years	741	6.7	5.5	5.4
5-15 years	1,545	14.0	12.7	12.4
16-24 years	1,319	11.9	10.6	10.2
25-64 years	5,814	52.5	54.0	53.5
65 and over	1,647	14.9	17.2	18.6

Table KS102EW

Age structure of the population



Households

Total households

Number	Average household size (persons)		
	This Area	High Peak	Derbyshire
4,618	2.40	2.33	2.31

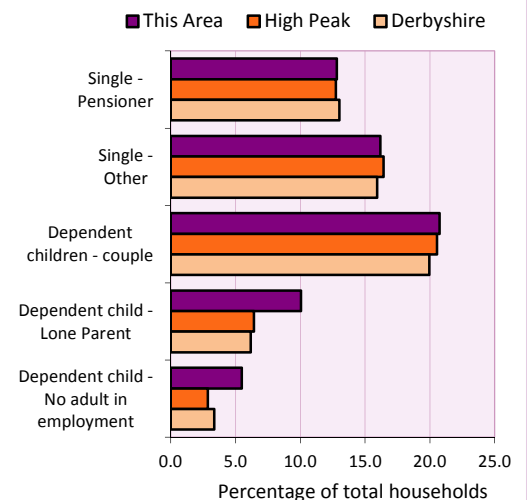
Table KS101EW and KS403EW

Household types

Number	% of total households			
	This Area	High Peak	Derbyshire	
Single person households	1,339	29.0	29.2	28.9
Pensioner	592	12.8	12.7	13.0
Other	747	16.2	16.4	15.9
Households with dependent children				
All	1,511	32.7	28.4	27.6
Couple	958	20.7	20.5	19.9
Lone parent	464	10.0	6.4	6.2
No adult in employment	253	5.5	2.9	3.4
One person with a long-term health problem - or disability	296	6.4	4.4	4.5

Table KS105EW and KS106EW

Household types



Car/van ownership

Number of households	% of total households			
	This Area	High Peak	Derbyshire	
No car or van	1,241	26.9	19.6	20.1

Table KS404EW

2011 Census: Summary Profile

Etherow

Area type and code
Electoral Division (ED_H04)

Accommodation

Tenure	Number of households	% of total households		
		This Area	High Peak	Derbyshire
Owner-occupied	2,927	63.4	72.6	71.4
Rented from council/housing association	1,203	26.1	12.7	15.3
Private/other rented	421	9.1	13.4	12.0
Living rent free	67	1.5	1.2	1.3

Table KS402EW

Amenities	Number of households	% of total households		
		This Area	High Peak	Derbyshire
Overcrowded households	237	5.1	4.8	3.7
Households without central heating	101	2.2	2.3	2.0

Table KS403EW

Total household spaces	4,762
-------------------------------	--------------

Table KS401EW

Type of accommodation	Number of household spaces	% of total household spaces		
		This Area	High Peak	Derbyshire
Detached	703	14.8	23.5	31.8
Semi-detached	1,243	26.1	29.2	38.7
Terraced	2,485	52.2	34.4	20.6
Flat/maisonette/apartment	331	7.0	12.6	8.6
Other	0	0.0	0.2	0.3

Table KS401EW

Marital status

Marital status	Number of people	% of people aged 16+		
		This Area	High Peak	Derbyshire
Single	3,058	34.8	30.9	29.3
Married	3,859	44.0	49.1	50.5
Same-sex civil partnership	22	0.3	0.2	0.2
Separated	257	2.9	2.4	2.4
Divorced	910	10.4	9.9	9.9
Widowed / surviving partner	674	7.7	7.4	7.7

Table KS103EW

Health

Health	Number of people	% of total population		
		This Area	High Peak	Derbyshire
People whose day-to-day activities are limited	2,256	20.4	18.1	20.4
People with 'bad' general health	753	6.8	5.2	6.2
People providing unpaid care	1,197	10.8	11.3	12.1

Table KS301EW

2011 Census: Summary Profile

Etherow

Area type and code
Electoral Division (ED_H04)

Ethnicity

Ethnic group	Number of people	% of total population		
		This Area	High Peak	Derbyshire
White British	10,605	95.8	95.9	95.8
Black and Minority Ethnic (BME)	461	4.2	4.1	4.2
White Other	187	1.7	2.0	1.7
Mixed/multiple ethnic groups	142	1.3	1.0	0.9
Asian/Asian British	87	0.8	0.8	1.1
Black/African/Caribbean/Black British	36	0.3	0.2	0.4
Other ethnic group	9	0.1	0.1	0.1

Table KS201EW

Religion

Religion	Number of people	% of total population		
		This Area	High Peak	Derbyshire
Christian	7,290	65.9	64.1	63.6
Buddhist	9	0.1	0.3	0.2
Hindu	11	0.1	0.1	0.2
Jewish	6	0.1	0.0	0.0
Muslim	20	0.2	0.2	0.3
Sikh	6	0.1	0.0	0.3
Other religions	43	0.4	0.4	0.4
No religion	2,950	26.7	27.6	28.0
Not stated	731	6.6	7.2	7.0

Table KS209EW

Migration

Country of birth by year of arrival in the UK	Number of people	% of total residents		
		This Area	High Peak	Derbyshire
From within the UK total	10,774	97.4	96.4	96.7
From outside the UK total	292	2.6	3.6	3.3
<i>of which</i>				
- Ireland	48	0.4	0.5	0.3
- Other EU country	40	0.4	0.8	0.9
- European (Non-EU country)	65	0.6	0.2	0.1
- Other parts of the world	139	1.3	1.7	1.6

Table LC2804EW

Length of residence in the UK	Number of people	% of total residents		
		This Area	High Peak	Derbyshire
Less than 2 years	9	0.1	0.2	0.3
2 years or more but less than 5 years	43	0.4	0.5	0.5
5 years or more but less than 10 years	40	0.4	0.6	0.6
10 years or more	200	1.8	2.2	2.0
Born in the UK	10,774	97.4	96.4	96.7

Table QS803EW

2011 Census: Summary Profile

Etherow

Area type and code
Electoral Division (ED_H04)

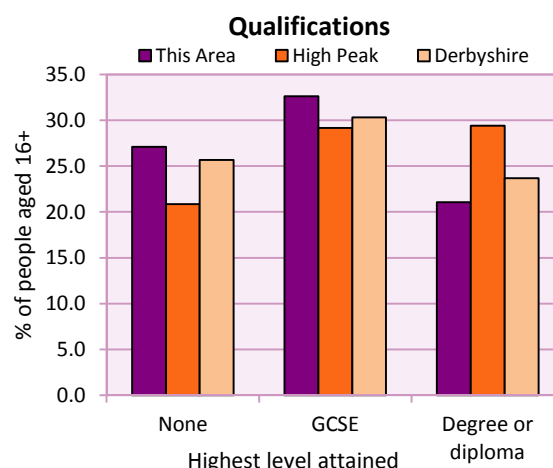
Education

Full-time students	Number	% of population in age group		
		This Area	High Peak	Derbyshire
aged 16-17	274	86.2	88.0	86.3
aged 18-74	265	3.4	3.9	2.9

Table KS501EW

Qualifications	People (aged 16+)	% of all people aged 16+		
		This Area	High Peak	Derbyshire
No qualifications	2,379	27.1	20.9	25.7
Highest level attained				
GCSE	2,864	32.6	29.2	30.3
Degree or diploma	1,849	21.1	29.4	23.7

Table KS501EW



Workforce

Economic activity	People aged 16-74								
	This Area			High Peak			Derbyshire		
	Males	Females	All	Males	Females	All	Males	Females	All
Economically active									
- number	2,916	2,692	5,608	25,645	22,915	48,560	211,349	185,704	397,053
- rate (%)	74.7	65.0	69.7	76.3	67.8	72.1	74.8	65.1	69.9
All unemployed									
- number	258	208	466	1,563	1,013	2,576	13,541	8,665	22,206
- rate (%)	6.6	5.0	5.8	4.7	3.0	3.8	4.8	3.0	3.9
Economically inactive									
- number	987	1,447	2,434	7,965	10,864	18,829	71,240	99,505	170,745
- rate (%)	25.3	35.0	30.3	23.7	32.2	27.9	25.2	34.9	30.1

Table KS601EW KS602EW and KS603EW

Hours worked	% of people aged 16-74 in employment					
	Full time (more than 30 hrs)			Part time (30 hrs or less)		
	This Area	High Peak	Derbyshire	This Area	High Peak	Derbyshire
All	71.6	70.0	70.3	28.4	30.0	29.7
Males	86.8	85.6	86.5	13.2	14.4	13.5
Females	55.4	52.8	52.1	44.6	47.2	47.9

Table KS604EW

People travelling to work	This Area	High Peak	Derbyshire
- works mainly at or from home %	8.7	12.2	10.5
- by car or van %	60.5	59.4	65.6
- by public transport or taxi %	10.0	8.4	6.6
- by all other methods of travel %	20.8	20.0	17.4
Average distance travelled km	14.3	15.7	15.2

Table LC7101EW and QS702EW

2011 Census: Summary Profile

Etherow

Area type and code
Electoral Division (ED_H04)

Workforce (continued)

Industry (people aged 16-74 in employment)	Number of workers	% of people aged 16-74 in employment		
		This Area	High Peak	Derbyshire
Agriculture, forestry and fishing	19	0.4	1.0	1.0
Mining, quarrying and utilities	97	1.9	2.0	1.9
Manufacturing	728	14.3	13.3	14.9
Construction	421	8.3	7.6	8.5
Wholesale and retail	857	16.8	14.4	16.6
Business services	1,244	24.4	27.4	25.1
Public services	1,526	30.0	29.6	27.5
Other services	202	4.0	4.7	4.5

Chart category

Other

Other

Manufacturing

Other

Services

Services

Services

Services

Table KS605EW

Occupation (people aged 16-74 in employment)	Number of workers	% of people aged 16-74 in employment		
		This Area	High Peak	Derbyshire
Managers, directors & senior officials	458	9.0	11.3	10.9
Professional	686	13.5	17.8	15.1
Associate professional & technical	544	10.7	11.7	11.0
Administrative & secretarial	541	10.6	10.1	10.9
Skilled trades	669	13.1	12.6	13.3
Caring, leisure & other services	568	11.2	10.0	9.6
Sales & customer service	443	8.7	7.0	7.9
Process, plant & machine operatives	502	9.9	9.0	9.6
Elementary occupations	683	13.4	10.4	11.7

Chart category

Managerial & professional

Managerial & professional

Managerial & professional

Other non-manual

Manual

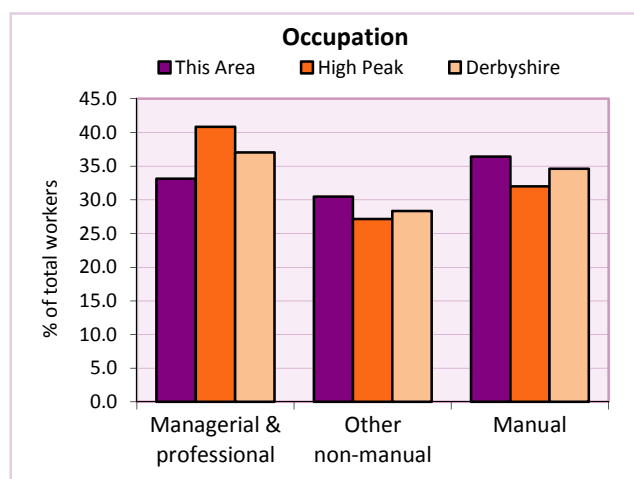
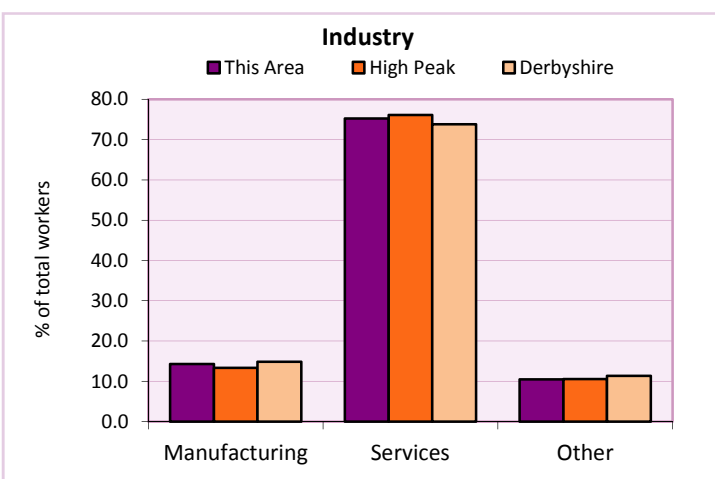
Other non-manual

Other non-manual

Manual

Manual

Table KS608EW



For an **explanation** of the various terms used in these tables, please see the accompanying **Glossary**.

Extension profiles covering the following topics in more detail will also be available:

Population, Economic Activity, Equalities, Health, Households, and Housing.

Profiles in Adobe Acrobat (pdf) format can be downloaded from the Derbyshire Observatory web site, which also provides interactive maps and charts - <http://observatory.derbyshire.gov.uk>

Please note that figures vary across the Census Profiles as different denominators are used. 2011 Census Table reference numbers are provided beneath each individual table in the Census Profiles should you require further information.

Version: 6.31