

Chisworth

Area type and code
Parish (E04002846)

Population

Population change since 2001

Change in numbers	% change		
	This Area	High Peak	Derbyshire
-55	-19.4	+1.6	+4.8

2011 Census Table KS101EW and 2001 Census Table S001

Residents

	Number
Total resident population	229
- in households	229
- in communal establishments	0

Table KS101EW

Density of population

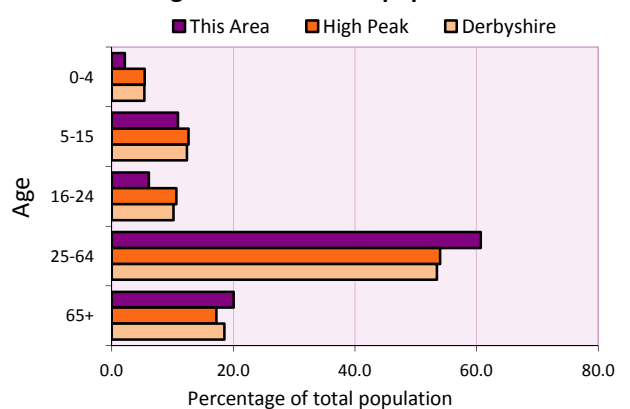
Area (hectares)	Persons per hectare		
	This Area	High Peak	Derbyshire
357	0.6	1.7	3.0

Table KS101EW

Age structure	Number of people	% of total population		
		This Area	High Peak	Derbyshire
0-4 years	5	2.2	5.5	5.4
5-15 years	25	10.9	12.7	12.4
16-24 years	14	6.1	10.6	10.2
25-64 years	139	60.7	54.0	53.5
65 and over	46	20.1	17.2	18.6

Table KS102EW

Age structure of the population



Households

Total households

Number	Average household size (persons)		
	This Area	High Peak	Derbyshire
102	2.25	2.33	2.31

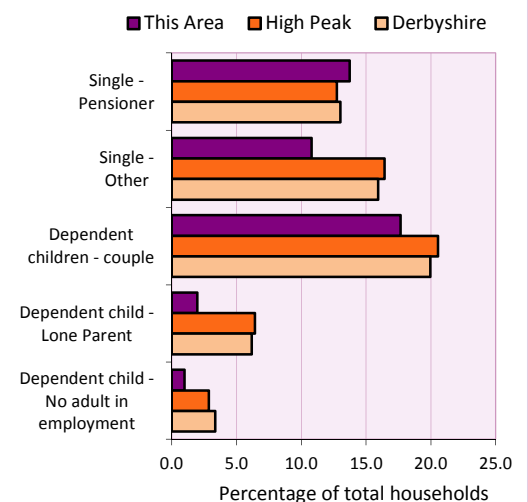
Table KS101EW and KS403EW

Household types

Number	% of total households			
	This Area	High Peak	Derbyshire	
Single person households	25	24.5	29.2	28.9
Pensioner	14	13.7	12.7	13.0
Other	11	10.8	16.4	15.9
Households with dependent children				
All	20	19.6	28.4	27.6
Couple	18	17.6	20.5	19.9
Lone parent	2	2.0	6.4	6.2
No adult in employment	1	1.0	2.9	3.4
One person with a long-term health problem - or disability	3	2.9	4.4	4.5

Table KS105EW and KS106EW

Household types



Car/van ownership

Number of households	% of total households			
	This Area	High Peak	Derbyshire	
No car or van	8	7.8	19.6	20.1

Table KS404EW

2011 Census: Summary Profile

Chisworth

Area type and code
Parish (E04002846)

Accommodation

Tenure	Number of households	% of total households		
		This Area	High Peak	Derbyshire
Owner-occupied	84	82.4	72.6	71.4
Rented from council/housing association	1	1.0	12.7	15.3
Private/other rented	14	13.7	13.4	12.0
Living rent free	3	2.9	1.2	1.3

Table KS402EW

Amenities	Number of households	% of total households		
		This Area	High Peak	Derbyshire
Overcrowded households	0	0.0	4.8	3.7
Households without central heating	2	2.0	2.3	2.0

Table KS403EW

Total household spaces	111
-------------------------------	------------

Table KS401EW

Type of accommodation	Number of household spaces	% of total household spaces		
		This Area	High Peak	Derbyshire
Detached	32	28.8	23.5	31.8
Semi-detached	27	24.3	29.2	38.7
Terraced	52	46.8	34.4	20.6
Flat/maisonette/apartment	0	0.0	12.6	8.6
Other	0	0.0	0.2	0.3

Table KS401EW

Marital status

Marital status	Number of people	% of people aged 16+		
		This Area	High Peak	Derbyshire
Single	48	24.1	30.9	29.3
Married	127	63.8	49.1	50.5
Same-sex civil partnership	0	0.0	0.2	0.2
Separated	1	0.5	2.4	2.4
Divorced	13	6.5	9.9	9.9
Widowed / surviving partner	10	5.0	7.4	7.7

Table KS103EW

Health

Health	Number of people	% of total population		
		This Area	High Peak	Derbyshire
People whose day-to-day activities are limited	34	14.8	18.1	20.4
People with 'bad' general health	12	5.2	5.2	6.2
People providing unpaid care	39	17.0	11.3	12.1

Table KS301EW

2011 Census: Summary Profile

Chisworth

Area type and code
Parish (E04002846)

Ethnicity

Ethnic group	Number of people	% of total population		
		This Area	High Peak	Derbyshire
White British	225	98.3	95.9	95.8
Black and Minority Ethnic (BME)	4	1.7	4.1	4.2
White Other	2	0.9	2.0	1.7
Mixed/multiple ethnic groups	2	0.9	1.0	0.9
Asian/Asian British	0	0.0	0.8	1.1
Black/African/Caribbean/Black British	0	0.0	0.2	0.4
Other ethnic group	0	0.0	0.1	0.1

Table KS201EW

Religion

Religion	Number of people	% of total population		
		This Area	High Peak	Derbyshire
Christian	149	65.1	64.1	63.6
Buddhist	0	0.0	0.3	0.2
Hindu	0	0.0	0.1	0.2
Jewish	0	0.0	0.0	0.0
Muslim	0	0.0	0.2	0.3
Sikh	0	0.0	0.0	0.3
Other religions	0	0.0	0.4	0.4
No religion	62	27.1	27.6	28.0
Not stated	18	7.9	7.2	7.0

Table KS209EW

Migration

Country of birth by year of arrival in the UK	Number of people	% of total residents		
		This Area	High Peak	Derbyshire
From within the UK total	225	98.3	96.4	96.7
From outside the UK total	4	1.7	3.6	3.3
<i>of which</i>				
- Ireland	0	0.0	0.5	0.3
- Other EU country	2	0.9	0.8	0.9
- European (Non-EU country)	0	0.0	0.2	0.1
- Other parts of the world	2	0.9	1.7	1.6

Table LC2804EW

Length of residence in the UK	Number of people	% of total residents		
		This Area	High Peak	Derbyshire
Less than 2 years	0	0.0	0.2	0.3
2 years or more but less than 5 years	0	0.0	0.5	0.5
5 years or more but less than 10 years	1	0.4	0.6	0.6
10 years or more	3	1.3	2.2	2.0
Born in the UK	225	98.3	96.4	96.7

Table QS803EW

2011 Census: Summary Profile

Chisworth

Area type and code
Parish (E04002846)

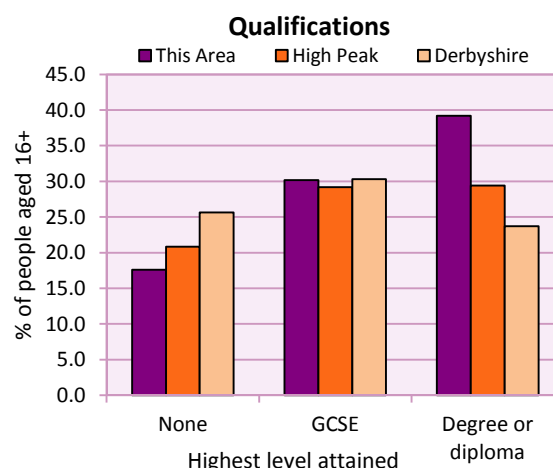
Education

Full-time students	Number	% of population in age group		
		This Area	High Peak	Derbyshire
aged 16-17	1	50.0	88.0	86.3
aged 18-74	2	1.1	3.9	2.9

Table KS501EW

Qualifications	People (aged 16+)	% of all people aged 16+		
		This Area	High Peak	Derbyshire
No qualifications	35	17.6	20.9	25.7
Highest level attained				
GCSE	60	30.2	29.2	30.3
Degree or diploma	78	39.2	29.4	23.7

Table KS501EW



Workforce

Economic activity	People aged 16-74								
	This Area			High Peak			Derbyshire		
	Males	Females	All	Males	Females	All	Males	Females	All
Economically active									
- number	74	64	138	25,645	22,915	48,560	211,349	185,704	397,053
- rate (%)	79.6	71.9	75.8	76.3	67.8	72.1	74.8	65.1	69.9
All unemployed									
- number	2	3	5	1,563	1,013	2,576	13,541	8,665	22,206
- rate (%)	2.2	3.4	2.7	4.7	3.0	3.8	4.8	3.0	3.9
Economically inactive									
- number	19	25	44	7,965	10,864	18,829	71,240	99,505	170,745
- rate (%)	20.4	28.1	24.2	23.7	32.2	27.9	25.2	34.9	30.1

Table KS601EW KS602EW and KS603EW

Hours worked	% of people aged 16-74 in employment					
	Full time (more than 30 hrs)			Part time (30 hrs or less)		
	This Area	High Peak	Derbyshire	This Area	High Peak	Derbyshire
All	77.4	70.0	70.3	22.6	30.0	29.7
Males	87.5	85.6	86.5	12.5	14.4	13.5
Females	65.6	52.8	52.1	34.4	47.2	47.9

Table KS604EW

People travelling to work	This Area	High Peak	Derbyshire
- works mainly at or from home %	20.3	12.2	10.5
- by car or van %	63.8	59.4	65.6
- by public transport or taxi %	4.3	8.4	6.6
- by all other methods of travel %	11.6	20.0	17.4
Average distance travelled km	18.0	15.7	15.2

Table LC7101EW and QS702EW

2011 Census: Summary Profile

Chisworth

Area type and code
Parish (E04002846)

Workforce (continued)

Industry (people aged 16-74 in employment)	Number of workers	% of people aged 16-74 in employment		
		This Area	High Peak	Derbyshire
Agriculture, forestry and fishing	8	6.0	1.0	1.0
Mining, quarrying and utilities	4	3.0	2.0	1.9
Manufacturing	11	8.3	13.3	14.9
Construction	13	9.8	7.6	8.5
Wholesale and retail	20	15.0	14.4	16.6
Business services	35	26.3	27.4	25.1
Public services	31	23.3	29.6	27.5
Other services	11	8.3	4.7	4.5

Chart category

Other

Other

Manufacturing

Other

Services

Services

Services

Services

Table KS605EW

Occupation (people aged 16-74 in employment)	Number of workers	% of people aged 16-74 in employment		
		This Area	High Peak	Derbyshire
Managers, directors & senior officials	17	12.8	11.3	10.9
Professional	40	30.1	17.8	15.1
Associate professional & technical	19	14.3	11.7	11.0
Administrative & secretarial	12	9.0	10.1	10.9
Skilled trades	18	13.5	12.6	13.3
Caring, leisure & other services	8	6.0	10.0	9.6
Sales & customer service	7	5.3	7.0	7.9
Process, plant & machine operatives	8	6.0	9.0	9.6
Elementary occupations	4	3.0	10.4	11.7

Chart category

Managerial & professional

Managerial & professional

Managerial & professional

Other non-manual

Manual

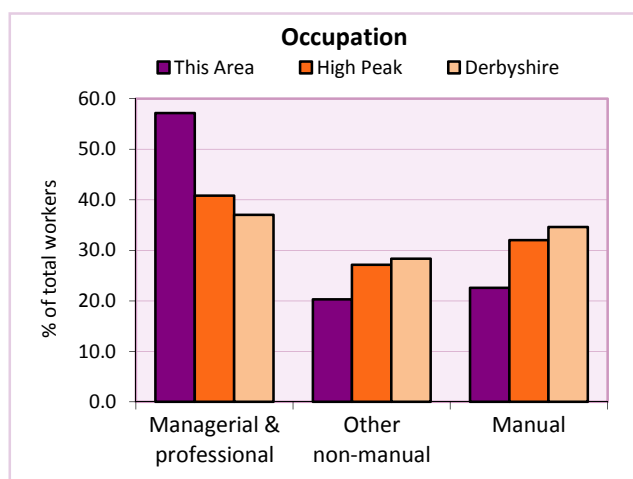
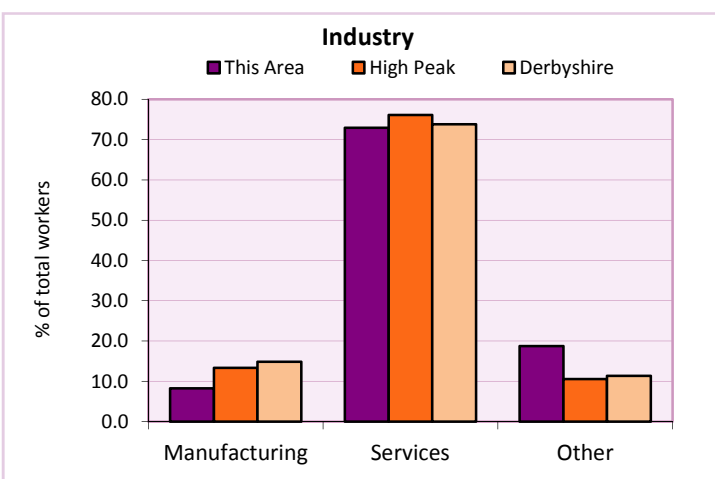
Other non-manual

Other non-manual

Manual

Manual

Table KS608EW



For an **explanation** of the various terms used in these tables, please see the accompanying **Glossary**.

Extension profiles covering the following topics in more detail will also be available:

Population, Economic Activity, Equalities, Health, Households, and Housing.

Profiles in Adobe Acrobat (pdf) format can be downloaded from the Derbyshire Observatory web site, which also provides interactive maps and charts - <http://observatory.derbyshire.gov.uk>

Please note that figures vary across the Census Profiles as different denominators are used. 2011 Census Table reference numbers are provided beneath each individual table in the Census Profiles should you require further information.

Version: 6.31