

Hope

Area type and code
Parish (E04002852)

Population

Population change since 2001

Change in numbers	% change		
	This Area	High Peak	Derbyshire
+25	+3.0	+1.6	+4.8

2011 Census Table KS101EW and 2001 Census Table S001

Residents

	Number
Total resident population	864
- in households	864
- in communal establishments	0

Table KS101EW

Density of population

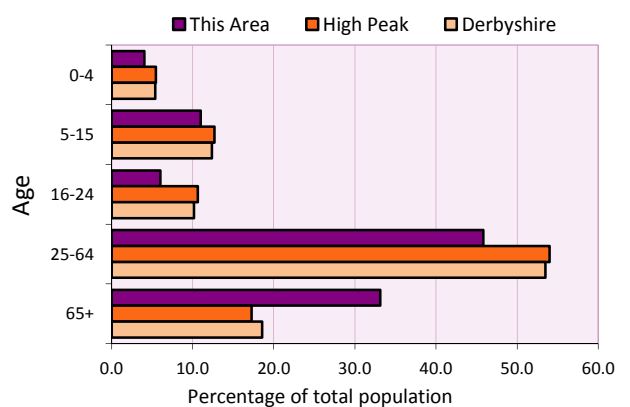
Area (hectares)	Persons per hectare		
	This Area	High Peak	Derbyshire
1,200	0.7	1.7	3.0

Table KS101EW

Age structure	Number of people	% of total population		
		This Area	High Peak	Derbyshire
0-4 years	35	4.1	5.5	5.4
5-15 years	95	11.0	12.7	12.4
16-24 years	52	6.0	10.6	10.2
25-64 years	396	45.8	54.0	53.5
65 and over	286	33.1	17.2	18.6

Table KS102EW

Age structure of the population



Households

Total households

Number	Average household size (persons)		
	This Area	High Peak	Derbyshire
411	2.10	2.33	2.31

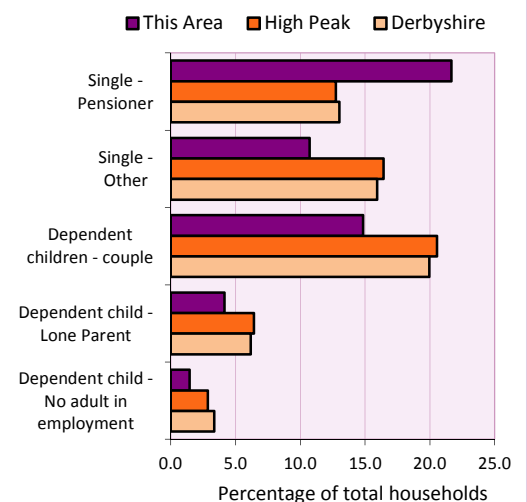
Table KS101EW and KS403EW

Household types

Household types	Number	% of total households		
		This Area	High Peak	Derbyshire
Single person households	133	32.4	29.2	28.9
Pensioner	89	21.7	12.7	13.0
Other	44	10.7	16.4	15.9
Households with dependent children				
All	81	19.7	28.4	27.6
Couple	61	14.8	20.5	19.9
Lone parent	17	4.1	6.4	6.2
No adult in employment	6	1.5	2.9	3.4
One person with a long-term health problem - or disability	20	4.9	4.4	4.5

Table KS105EW and KS106EW

Household types



Car/van ownership

Number of households	% of total households		
	This Area	High Peak	Derbyshire
No car or van	20.0	19.6	20.1

Table KS404EW

2011 Census: Summary Profile

Hope

Area type and code
Parish (E04002852)

Accommodation

Tenure	Number of households	% of total households		
		This Area	High Peak	Derbyshire
Owner-occupied	279	67.9	72.6	71.4
Rented from council/housing association	70	17.0	12.7	15.3
Private/other rented	55	13.4	13.4	12.0
Living rent free	7	1.7	1.2	1.3

Table KS402EW

Amenities	Number of households	% of total households		
		This Area	High Peak	Derbyshire
Overcrowded households	35	8.5	4.8	3.7
Households without central heating	4	1.0	2.3	2.0

Table KS403EW

Total household spaces	444
-------------------------------	------------

Table KS401EW

Type of accommodation	Number of household spaces	% of total household spaces		
		This Area	High Peak	Derbyshire
Detached	136	30.6	23.5	31.8
Semi-detached	154	34.7	29.2	38.7
Terraced	102	23.0	34.4	20.6
Flat/maisonette/apartment	49	11.0	12.6	8.6
Other	3	0.7	0.2	0.3

Table KS401EW

Marital status

Marital status	Number of people	% of people aged 16+		
		This Area	High Peak	Derbyshire
Single	150	20.4	30.9	29.3
Married	433	59.0	49.1	50.5
Same-sex civil partnership	4	0.5	0.2	0.2
Separated	15	2.0	2.4	2.4
Divorced	56	7.6	9.9	9.9
Widowed / surviving partner	76	10.4	7.4	7.7

Table KS103EW

Health

Health	Number of people	% of total population		
		This Area	High Peak	Derbyshire
People whose day-to-day activities are limited	217	25.1	18.1	20.4
People with 'bad' general health	57	6.6	5.2	6.2
People providing unpaid care	123	14.2	11.3	12.1

Table KS301EW

2011 Census: Summary Profile

Hope

Area type and code
Parish (E04002852)

Ethnicity

Ethnic group	Number of people	% of total population		
		This Area	High Peak	Derbyshire
White British	826	95.6	95.9	95.8
Black and Minority Ethnic (BME)	38	4.4	4.1	4.2
White Other	16	1.9	2.0	1.7
Mixed/multiple ethnic groups	11	1.3	1.0	0.9
Asian/Asian British	9	1.0	0.8	1.1
Black/African/Caribbean/Black British	2	0.2	0.2	0.4
Other ethnic group	0	0.0	0.1	0.1

Table KS201EW

Religion

Religion	Number of people	% of total population		
		This Area	High Peak	Derbyshire
Christian	565	65.4	64.1	63.6
Buddhist	0	0.0	0.3	0.2
Hindu	4	0.5	0.1	0.2
Jewish	0	0.0	0.0	0.0
Muslim	4	0.5	0.2	0.3
Sikh	0	0.0	0.0	0.3
Other religions	3	0.3	0.4	0.4
No religion	205	23.7	27.6	28.0
Not stated	83	9.6	7.2	7.0

Table KS209EW

Migration

Country of birth by year of arrival in the UK	Number of people	% of total residents		
		This Area	High Peak	Derbyshire
From within the UK total	835	96.6	96.4	96.7
From outside the UK total	29	3.4	3.6	3.3
<i>of which</i>				
- Ireland	7	0.8	0.5	0.3
- Other EU country	2	0.2	0.8	0.9
- European (Non-EU country)	7	0.8	0.2	0.1
- Other parts of the world	13	1.5	1.7	1.6

Table LC2804EW

Length of residence in the UK	Number of people	% of total residents		
		This Area	High Peak	Derbyshire
Less than 2 years	1	0.1	0.2	0.3
2 years or more but less than 5 years	2	0.2	0.5	0.5
5 years or more but less than 10 years	3	0.3	0.6	0.6
10 years or more	23	2.7	2.2	2.0
Born in the UK	835	96.6	96.4	96.7

Table QS803EW

2011 Census: Summary Profile

Hope

Area type and code
Parish (E04002852)

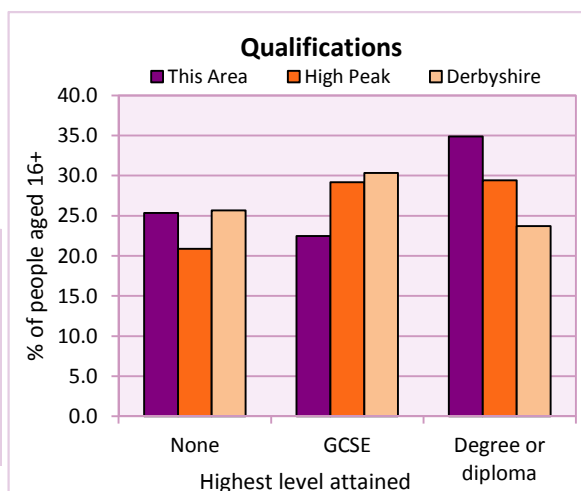
Education

Full-time students	Number	% of population in age group		
		This Area	High Peak	Derbyshire
aged 16-17	15	100.0	88.0	86.3
aged 18-74	13	2.3	3.9	2.9

Table KS501EW

Qualifications	People (aged 16+)	% of all people aged 16+		
		This Area	High Peak	Derbyshire
No qualifications	186	25.3	20.9	25.7
Highest level attained				
GCSE	165	22.5	29.2	30.3
Degree or diploma	256	34.9	29.4	23.7

Table KS501EW



Workforce

Economic activity	People aged 16-74								
	This Area			High Peak			Derbyshire		
	Males	Females	All	Males	Females	All	Males	Females	All
Economically active									
- number	205	193	398	25,645	22,915	48,560	211,349	185,704	397,053
- rate (%)	73.5	65.9	69.6	76.3	67.8	72.1	74.8	65.1	69.9
All unemployed									
- number	6	6	12	1,563	1,013	2,576	13,541	8,665	22,206
- rate (%)	2.2	2.0	2.1	4.7	3.0	3.8	4.8	3.0	3.9
Economically inactive									
- number	74	100	174	7,965	10,864	18,829	71,240	99,505	170,745
- rate (%)	26.5	34.1	30.4	23.7	32.2	27.9	25.2	34.9	30.1

Table KS601EW KS602EW and KS603EW

Hours worked	% of people aged 16-74 in employment					
	Full time (more than 30 hrs)			Part time (30 hrs or less)		
	This Area	High Peak	Derbyshire	This Area	High Peak	Derbyshire
All	64.7	70.0	70.3	35.3	30.0	29.7
Males	81.3	85.6	86.5	18.7	14.4	13.5
Females	47.1	52.8	52.1	52.9	47.2	47.9

Table KS604EW

People travelling to work	This Area	High Peak	Derbyshire
- works mainly at or from home %	19.4	12.2	10.5
- by car or van %	70.1	59.4	65.6
- by public transport or taxi %	6.7	8.4	6.6
- by all other methods of travel %	3.7	20.0	17.4
Average distance travelled km	17.9	15.7	15.2

Table LC7101EW and QS702EW

2011 Census: Summary Profile

Hope

Area type and code
Parish (E04002852)

Workforce (continued)

Industry (people aged 16-74 in employment)	Number of workers	% of people aged 16-74 in employment		
		This Area	High Peak	Derbyshire
Agriculture, forestry and fishing	14	3.6	1.0	1.0
Mining, quarrying and utilities	6	1.6	2.0	1.9
Manufacturing	43	11.2	13.3	14.9
Construction	26	6.8	7.6	8.5
Wholesale and retail	57	14.8	14.4	16.6
Business services	110	28.6	27.4	25.1
Public services	109	28.3	29.6	27.5
Other services	20	5.2	4.7	4.5

Chart category

Other

Other

Manufacturing

Other

Services

Services

Services

Services

Table KS605EW

Occupation (people aged 16-74 in employment)	Number of workers	% of people aged 16-74 in employment		
		This Area	High Peak	Derbyshire
Managers, directors & senior officials	63	16.4	11.3	10.9
Professional	75	19.5	17.8	15.1
Associate professional & technical	41	10.6	11.7	11.0
Administrative & secretarial	35	9.1	10.1	10.9
Skilled trades	55	14.3	12.6	13.3
Caring, leisure & other services	33	8.6	10.0	9.6
Sales & customer service	29	7.5	7.0	7.9
Process, plant & machine operatives	24	6.2	9.0	9.6
Elementary occupations	30	7.8	10.4	11.7

Chart category

Managerial & professional

Managerial & professional

Managerial & professional

Other non-manual

Manual

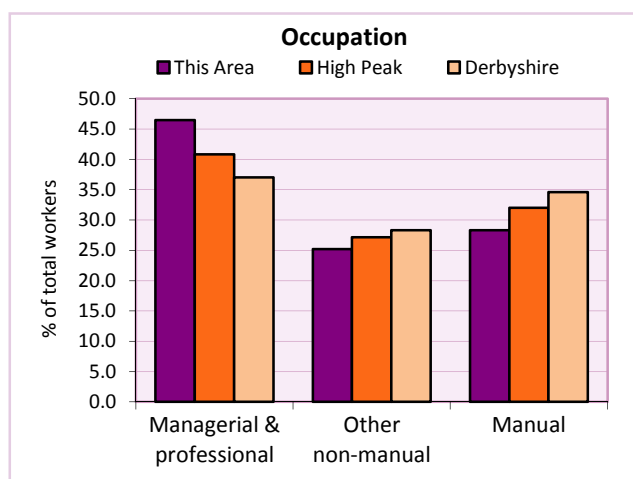
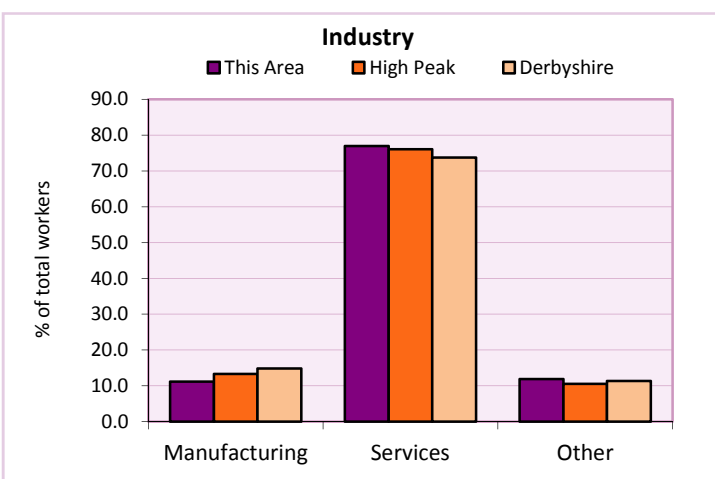
Other non-manual

Other non-manual

Manual

Manual

Table KS608EW



For an **explanation** of the various terms used in these tables, please see the accompanying **Glossary**.

Extension profiles covering the following topics in more detail will also be available:

Population, Economic Activity, Equalities, Health, Households, and Housing.

Profiles in Adobe Acrobat (pdf) format can be downloaded from the Derbyshire Observatory web site, which also provides interactive maps and charts - <http://observatory.derbyshire.gov.uk>

Please note that figures vary across the Census Profiles as different denominators are used. 2011 Census Table reference numbers are provided beneath each individual table in the Census Profiles should you require further information.

Version: 6.31