

## Peak Forest

Area type and code  
Parish (E04002856)

### Population

#### Population change since 2001

Change in numbers	% change		
	This Area	High Peak	Derbyshire
+28	+9.1	+1.6	+4.8

2011 Census Table KS101EW and 2001 Census Table S001

#### Residents

	Number
Total resident population	335
- in households	335
- in communal establishments	0

Table KS101EW

#### Density of population

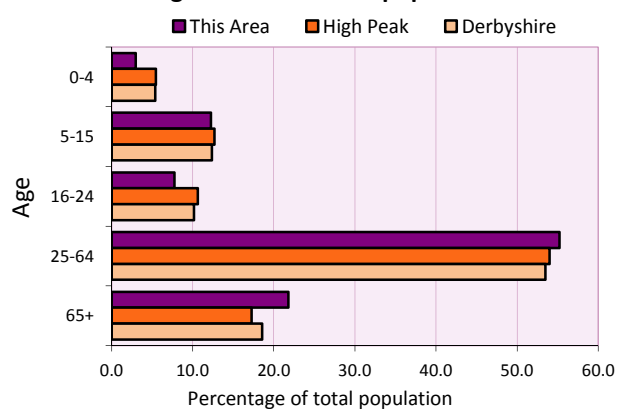
Area (hectares)	Persons per hectare		
	This Area	High Peak	Derbyshire
2,145	0.2	1.7	3.0

Table KS101EW

Age structure	Number of people	% of total population		
		This Area	High Peak	Derbyshire
0-4 years	10	3.0	5.5	5.4
5-15 years	41	12.2	12.7	12.4
16-24 years	26	7.8	10.6	10.2
25-64 years	185	55.2	54.0	53.5
65 and over	73	21.8	17.2	18.6

Table KS102EW

#### Age structure of the population



### Households

#### Total households

Number	Average household size (persons)		
	This Area	High Peak	Derbyshire
141	2.38	2.33	2.31

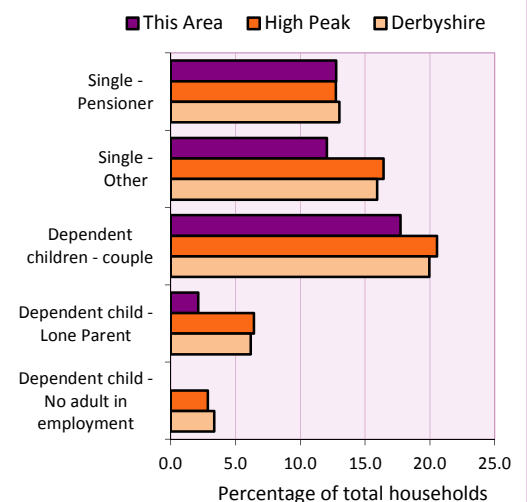
Table KS101EW and KS403EW

#### Household types

Number	% of total households			
	This Area	High Peak	Derbyshire	
Single person households	35	24.8	29.2	28.9
Pensioner	18	12.8	12.7	13.0
Other	17	12.1	16.4	15.9
Households with dependent children				
All	31	22.0	28.4	27.6
Couple	25	17.7	20.5	19.9
Lone parent	3	2.1	6.4	6.2
No adult in employment	0	0.0	2.9	3.4
One person with a long-term health problem - or disability	3	2.1	4.4	4.5

Table KS105EW and KS106EW

#### Household types



#### Car/van ownership

Number of households	% of total households			
	This Area	High Peak	Derbyshire	
No car or van	3	2.1	19.6	20.1

Table KS404EW

# 2011 Census: Summary Profile

## Peak Forest

Area type and code  
Parish (E04002856)

### Accommodation

Tenure	Number of households	% of total households		
		This Area	High Peak	Derbyshire
Owner-occupied	118	83.7	72.6	71.4
Rented from council/housing association	0	0.0	12.7	15.3
Private/other rented	20	14.2	13.4	12.0
Living rent free	3	2.1	1.2	1.3

Table KS402EW

Amenities	Number of households	% of total households		
		This Area	High Peak	Derbyshire
Overcrowded households	3	2.1	4.8	3.7
Households without central heating	3	2.1	2.3	2.0

Table KS403EW

<b>Total household spaces</b>	<b>146</b>
-------------------------------	------------

Table KS401EW

Type of accommodation	Number of household spaces	% of total household spaces		
		This Area	High Peak	Derbyshire
Detached	88	60.3	23.5	31.8
Semi-detached	37	25.3	29.2	38.7
Terraced	16	11.0	34.4	20.6
Flat/maisonette/apartment	3	2.1	12.6	8.6
Other	2	1.4	0.2	0.3

Table KS401EW

### Marital status

Marital status	Number of people	% of people aged 16+		
		This Area	High Peak	Derbyshire
Single	64	22.5	30.9	29.3
Married	173	60.9	49.1	50.5
Same-sex civil partnership	0	0.0	0.2	0.2
Separated	8	2.8	2.4	2.4
Divorced	18	6.3	9.9	9.9
Widowed / surviving partner	21	7.4	7.4	7.7

Table KS103EW

### Health

Health	Number of people	% of total population		
		This Area	High Peak	Derbyshire
People whose day-to-day activities are limited	54	16.1	18.1	20.4
People with 'bad' general health	17	5.1	5.2	6.2
People providing unpaid care	41	12.2	11.3	12.1

Table KS301EW

# 2011 Census: Summary Profile

## Peak Forest

Area type and code  
Parish (E04002856)

### Ethnicity

Ethnic group	Number of people	% of total population		
		This Area	High Peak	Derbyshire
White British	330	98.5	95.9	95.8
Black and Minority Ethnic (BME)	5	1.5	4.1	4.2
White Other	3	0.9	2.0	1.7
Mixed/multiple ethnic groups	0	0.0	1.0	0.9
Asian/Asian British	2	0.6	0.8	1.1
Black/African/Caribbean/Black British	0	0.0	0.2	0.4
Other ethnic group	0	0.0	0.1	0.1

Table KS201EW

### Religion

Religion	Number of people	% of total population		
		This Area	High Peak	Derbyshire
Christian	225	67.2	64.1	63.6
Buddhist	0	0.0	0.3	0.2
Hindu	0	0.0	0.1	0.2
Jewish	0	0.0	0.0	0.0
Muslim	0	0.0	0.2	0.3
Sikh	0	0.0	0.0	0.3
Other religions	1	0.3	0.4	0.4
No religion	74	22.1	27.6	28.0
Not stated	35	10.4	7.2	7.0

Table KS209EW

### Migration

Country of birth by year of arrival in the UK	Number of people	% of total residents		
		This Area	High Peak	Derbyshire
From within the UK total	326	97.3	96.4	96.7
From outside the UK total	9	2.7	3.6	3.3
<i>of which</i>				
- Ireland	1	0.3	0.5	0.3
- Other EU country	2	0.6	0.8	0.9
- European (Non-EU country)	2	0.6	0.2	0.1
- Other parts of the world	4	1.2	1.7	1.6

Table LC2804EW

Length of residence in the UK	Number of people	% of total residents		
		This Area	High Peak	Derbyshire
Less than 2 years	1	0.3	0.2	0.3
2 years or more but less than 5 years	2	0.6	0.5	0.5
5 years or more but less than 10 years	2	0.6	0.6	0.6
10 years or more	4	1.2	2.2	2.0
Born in the UK	326	97.3	96.4	96.7

Table QS803EW

# 2011 Census: Summary Profile

## Peak Forest

Area type and code  
Parish (E04002856)

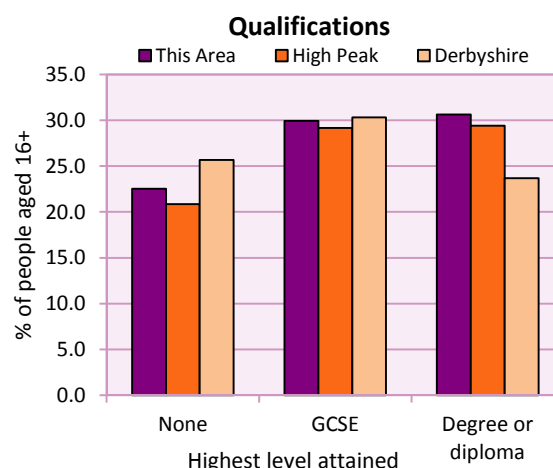
### Education

Full-time students	Number	% of population in age group		
		This Area	High Peak	Derbyshire
aged 16-17	5	62.5	88.0	86.3
aged 18-74	10	4.1	3.9	2.9

Table KS501EW

Qualifications	People (aged 16+)	% of all people aged 16+		
		This Area	High Peak	Derbyshire
No qualifications	64	22.5	20.9	25.7
Highest level attained				
GCSE	85	29.9	29.2	30.3
Degree or diploma	87	30.6	29.4	23.7

Table KS501EW



### Workforce

Economic activity	People aged 16-74								
	This Area			High Peak			Derbyshire		
	Males	Females	All	Males	Females	All	Males	Females	All
Economically active									
- number	103	95	198	25,645	22,915	48,560	211,349	185,704	397,053
- rate (%)	79.2	76.6	78.0	76.3	67.8	72.1	74.8	65.1	69.9
All unemployed									
- number	3	1	4	1,563	1,013	2,576	13,541	8,665	22,206
- rate (%)	2.3	0.8	1.6	4.7	3.0	3.8	4.8	3.0	3.9
Economically inactive									
- number	27	29	56	7,965	10,864	18,829	71,240	99,505	170,745
- rate (%)	20.8	23.4	22.0	23.7	32.2	27.9	25.2	34.9	30.1

Table KS601EW KS602EW and KS603EW

Hours worked	% of people aged 16-74 in employment					
	Full time (more than 30 hrs)			Part time (30 hrs or less)		
	This Area	High Peak	Derbyshire	This Area	High Peak	Derbyshire
All	66.5	70.0	70.3	33.5	30.0	29.7
Males	83.0	85.6	86.5	17.0	14.4	13.5
Females	48.9	52.8	52.1	51.1	47.2	47.9

Table KS604EW

People travelling to work	This Area	High Peak	Derbyshire
- works mainly at or from home %	23.4	12.2	10.5
- by car or van %	56.9	59.4	65.6
- by public transport or taxi %	4.0	8.4	6.6
- by all other methods of travel %	15.7	20.0	17.4
Average distance travelled km	14.8	15.7	15.2

Table LC7101EW and QS702EW

# 2011 Census: Summary Profile

Peak Forest

Area type and code  
Parish (E04002856)

## Workforce (continued)

Industry (people aged 16-74 in employment)	Number of workers	% of people aged 16-74 in employment		
		This Area	High Peak	Derbyshire
Agriculture, forestry and fishing	16	8.2	1.0	1.0
Mining, quarrying and utilities	4	2.1	2.0	1.9
Manufacturing	18	9.3	13.3	14.9
Construction	14	7.2	7.6	8.5
Wholesale and retail	28	14.4	14.4	16.6
Business services	55	28.4	27.4	25.1
Public services	45	23.2	29.6	27.5
Other services	14	7.2	4.7	4.5

Chart category

Other

Other

Manufacturing

Other

Services

Services

Services

Services

Table KS605EW

Occupation (people aged 16-74 in employment)	Number of workers	% of people aged 16-74 in employment		
		This Area	High Peak	Derbyshire
Managers, directors & senior officials	37	19.1	11.3	10.9
Professional	24	12.4	17.8	15.1
Associate professional & technical	10	5.2	11.7	11.0
Administrative & secretarial	18	9.3	10.1	10.9
Skilled trades	38	19.6	12.6	13.3
Caring, leisure & other services	19	9.8	10.0	9.6
Sales & customer service	11	5.7	7.0	7.9
Process, plant & machine operatives	15	7.7	9.0	9.6
Elementary occupations	22	11.3	10.4	11.7

Chart category

Managerial & professional

Managerial & professional

Managerial & professional

Other non-manual

Manual

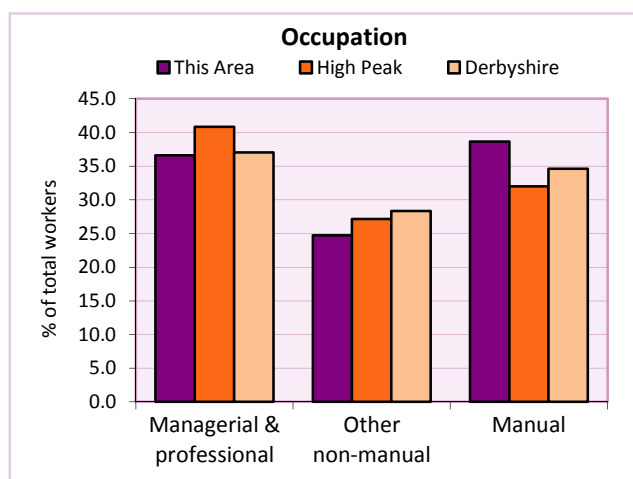
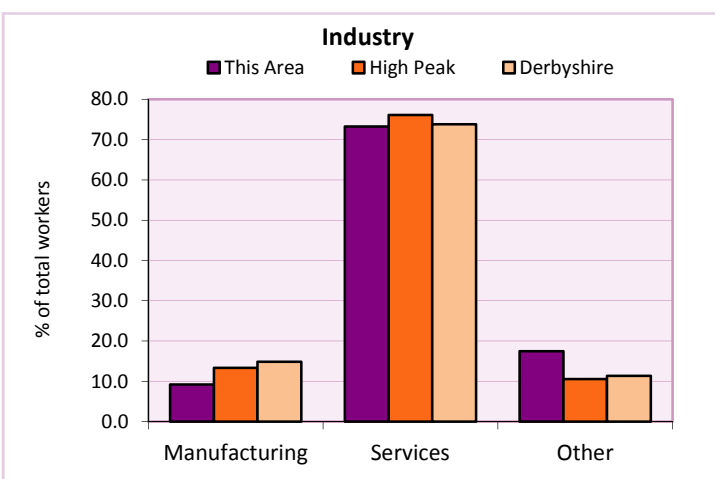
Other non-manual

Other non-manual

Manual

Manual

Table KS608EW



For an **explanation** of the various terms used in these tables, please see the accompanying **Glossary**.

**Extension profiles** covering the following topics in more detail will also be available:

**Population, Economic Activity, Equalities, Health, Households, and Housing.**

**Profiles** in Adobe Acrobat (pdf) format can be downloaded from the Derbyshire Observatory web site, which also provides interactive maps and charts - <http://observatory.derbyshire.gov.uk>

**Please note that figures vary across the Census Profiles as different denominators are used. 2011 Census Table reference numbers are provided beneath each individual table in the Census Profiles should you require further information.**

Version: 6.31