

## Linton

Area type and code  
Parish (E04002911)

### Population

#### Population change since 2001

Change in numbers	% change		
	This Area	S. Derbyshire	Derbyshire
+67	+3.0	+16.0	+4.8

2011 Census Table KS101EW and 2001 Census Table S001

#### Residents

	Number
Total resident population	2,303
- in households	2,303
- in communal establishments	0

Table KS101EW

#### Density of population

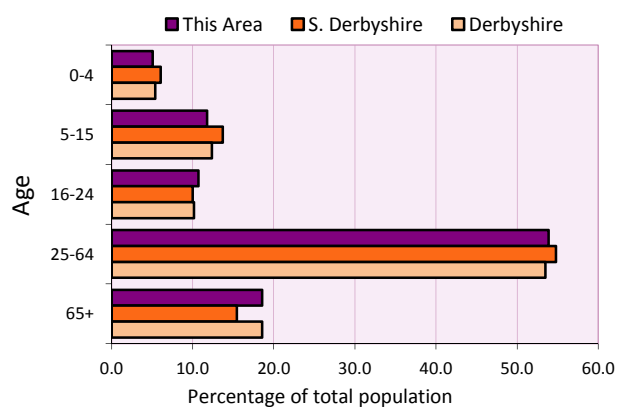
Area (hectares)	Persons per hectare		
	This Area	S. Derbyshire	Derbyshire
423	5.5	2.8	3.0

Table KS101EW

Age structure	Number of people	% of total population		
		This Area	S. Derbyshire	Derbyshire
0-4 years	117	5.1	6.1	5.4
5-15 years	271	11.8	13.7	12.4
16-24 years	247	10.7	10.0	10.2
25-64 years	1,241	53.9	54.8	53.5
65 and over	427	18.5	15.5	18.6

Table KS102EW

#### Age structure of the population



### Households

#### Total households

Number	Average household size (persons)		
	This Area	S. Derbyshire	Derbyshire
943	2.44	2.43	2.31

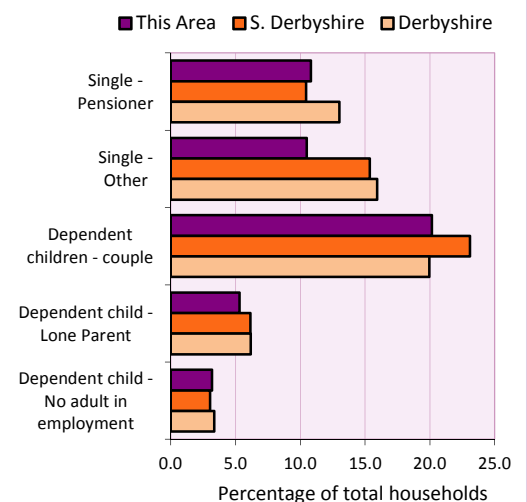
Table KS101EW and KS403EW

#### Household types

Household type	Number	% of total households		
		This Area	S. Derbyshire	Derbyshire
Single person households	201	21.3	25.8	28.9
Pensioner	102	10.8	10.4	13.0
Other	99	10.5	15.4	15.9
Households with dependent children				
All	262	27.8	30.9	27.6
Couple	190	20.1	23.1	19.9
Lone parent	50	5.3	6.1	6.2
No adult in employment	30	3.2	3.0	3.4
One person with a long-term health problem - or disability	51	5.4	4.6	4.5

Table KS105EW and KS106EW

#### Household types



#### Car/van ownership

Number of households	% of total households			
	This Area	S. Derbyshire	Derbyshire	
No car or van	129	13.7	13.5	20.1

Table KS404EW

# 2011 Census: Summary Profile

Linton

Area type and code  
Parish (E04002911)

## Accommodation

Tenure	Number of households	% of total households		
		This Area	S. Derbyshire	Derbyshire
Owner-occupied	760	80.6	75.8	71.4
Rented from council/housing association	122	12.9	9.9	15.3
Private/other rented	49	5.2	13.0	12.0
Living rent free	12	1.3	1.2	1.3

Table KS402EW

Amenities	Number of households	% of total households		
		This Area	S. Derbyshire	Derbyshire
Overcrowded households	22	2.3	3.2	3.7
Households without central heating	8	0.8	2.0	2.0

Table KS403EW

<b>Total household spaces</b>	<b>976</b>
-------------------------------	------------

Table KS401EW

Type of accommodation	Number of household spaces	% of total household spaces		
		This Area	S. Derbyshire	Derbyshire
Detached	261	26.7	39.8	31.8
Semi-detached	467	47.8	34.9	38.7
Terraced	222	22.7	18.1	20.6
Flat/maisonette/apartment	26	2.7	6.5	8.6
Other	0	0.0	0.7	0.3

Table KS401EW

## Marital status

Marital status	Number of people	% of people aged 16+		
		This Area	S. Derbyshire	Derbyshire
Single	534	27.9	28.7	29.3
Married	1,021	53.3	52.7	50.5
Same-sex civil partnership	5	0.3	0.2	0.2
Separated	46	2.4	2.5	2.4
Divorced	168	8.8	9.4	9.9
Widowed / surviving partner	141	7.4	6.6	7.7

Table KS103EW

## Health

Health	Number of people	% of total population		
		This Area	S. Derbyshire	Derbyshire
People whose day-to-day activities are limited	502	21.8	17.5	20.4
People with 'bad' general health	151	6.6	4.9	6.2
People providing unpaid care	303	13.2	11.1	12.1

Table KS301EW

# 2011 Census: Summary Profile

Linton

Area type and code  
Parish (E04002911)

## Ethnicity

Ethnic group	Number of people	% of total population		
		This Area	S. Derbyshire	Derbyshire
White British	2,253	97.8	94.0	95.8
Black and Minority Ethnic (BME)	50	2.2	6.0	4.2
White Other	32	1.4	1.7	1.7
Mixed/multiple ethnic groups	10	0.4	1.1	0.9
Asian/Asian British	8	0.3	2.5	1.1
Black/African/Caribbean/Black British	0	0.0	0.4	0.4
Other ethnic group	0	0.0	0.1	0.1

Table KS201EW

## Religion

Religion	Number of people	% of total population		
		This Area	S. Derbyshire	Derbyshire
Christian	1,575	68.4	64.0	63.6
Buddhist	4	0.2	0.2	0.2
Hindu	0	0.0	0.3	0.2
Jewish	2	0.1	0.0	0.0
Muslim	4	0.2	0.3	0.3
Sikh	6	0.3	1.5	0.3
Other religions	3	0.1	0.4	0.4
No religion	556	24.1	26.8	28.0
Not stated	153	6.6	6.6	7.0

Table KS209EW

## Migration

Country of birth by year of arrival in the UK	Number of people	% of total residents		
		This Area	S. Derbyshire	Derbyshire
From within the UK total	2,262	98.2	96.1	96.7
From outside the UK total	41	1.8	3.9	3.3
<i>of which</i>				
- Ireland	3	0.1	0.3	0.3
- Other EU country	14	0.6	0.9	0.9
- European (Non-EU country)	6	0.3	0.2	0.1
- Other parts of the world	18	0.8	2.2	1.6

Table LC2804EW

Length of residence in the UK	Number of people	% of total residents		
		This Area	S. Derbyshire	Derbyshire
Less than 2 years	3	0.1	0.3	0.3
2 years or more but less than 5 years	2	0.1	0.4	0.5
5 years or more but less than 10 years	9	0.4	0.7	0.6
10 years or more	27	1.2	2.5	2.0
Born in the UK	2,262	98.2	96.1	96.7

Table QS803EW

# 2011 Census: Summary Profile

Linton

Area type and code  
Parish (E04002911)

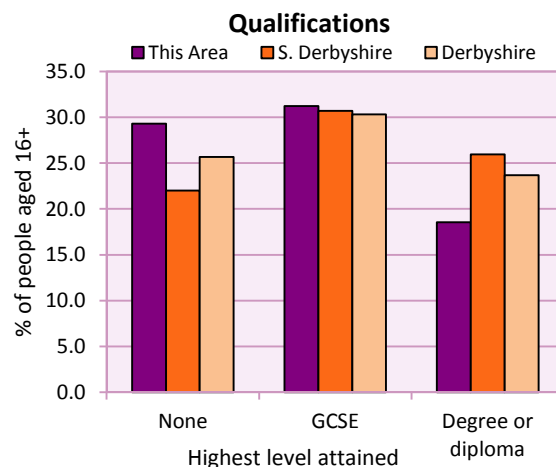
## Education

Full-time students	Number	% of population in age group		
		This Area	S. Derbyshire	Derbyshire
aged 16-17	60	87.0	89.1	86.3
aged 18-74	45	2.7	3.0	2.9

Table KS501EW

Qualifications	People (aged 16+)	% of all people aged 16+		
		This Area	S. Derbyshire	Derbyshire
No qualifications	561	29.3	22.0	25.7
Highest level attained				
GCSE	598	31.2	30.7	30.3
Degree or diploma	355	18.5	26.0	23.7

Table KS501EW



## Workforce

Economic activity	People aged 16-74								
	This Area			South Derbyshire			Derbyshire		
	Males	Females	All	Males	Females	All	Males	Females	All
Economically active									
- number	627	544	1,171	26,971	23,387	50,358	211,349	185,704	397,053
- rate (%)	72.1	61.1	66.5	78.0	67.1	72.5	74.8	65.1	69.9
All unemployed									
- number	28	26	54	1,236	889	2,125	13,541	8,665	22,206
- rate (%)	3.2	2.9	3.1	3.6	2.5	3.1	4.8	3.0	3.9
Economically inactive									
- number	243	346	589	7,615	11,477	19,092	71,240	99,505	170,745
- rate (%)	27.9	38.9	33.5	22.0	32.9	27.5	25.2	34.9	30.1

Table KS601EW KS602EW and KS603EW

Hours worked	% of people aged 16-74 in employment					
	Full time (more than 30 hrs)			Part time (30 hrs or less)		
	This Area	S. Derbyshire	Derbyshire	This Area	S. Derbyshire	Derbyshire
All	73.1	72.1	70.3	26.9	27.9	29.7
Males	90.0	88.4	86.5	10.0	11.6	13.5
Females	53.4	53.5	52.1	46.6	46.5	47.9

Table KS604EW

People travelling to work	This Area	S. Derbyshire	Derbyshire
- works mainly at or from home %	34.5	10.8	10.5
- by car or van %	52.6	71.5	65.6
- by public transport or taxi %	2.6	3.6	6.6
- by all other methods of travel %	10.3	14.2	17.4
Average distance travelled km	16.7	16.4	15.2

Table LC7101EW and QS702EW

# 2011 Census: Summary Profile

Linton

Area type and code  
Parish (E04002911)

## Workforce (continued)

Industry (people aged 16-74 in employment)	Number of workers	% of people aged 16-74 in employment		
		This Area	S. Derbyshire	Derbyshire
Agriculture, forestry and fishing	11	1.0	1.2	1.0
Mining, quarrying and utilities	24	2.2	1.9	1.9
Manufacturing	178	16.2	17.1	14.9
Construction	108	9.8	7.8	8.5
Wholesale and retail	190	17.3	16.2	16.6
Business services	264	24.0	25.8	25.1
Public services	274	24.9	25.6	27.5
Other services	52	4.7	4.3	4.5

Chart category

Other

Other

Manufacturing

Other

Services

Services

Services

Services

Table KS605EW

Occupation (people aged 16-74 in employment)	Number of workers	% of people aged 16-74 in employment		
		This Area	S. Derbyshire	Derbyshire
Managers, directors & senior officials	114	10.4	12.1	10.9
Professional	113	10.3	16.1	15.1
Associate professional & technical	119	10.8	11.8	11.0
Administrative & secretarial	116	10.5	10.9	10.9
Skilled trades	166	15.1	12.4	13.3
Caring, leisure & other services	115	10.4	8.8	9.6
Sales & customer service	79	7.2	7.1	7.9
Process, plant & machine operatives	156	14.2	9.8	9.6
Elementary occupations	123	11.2	10.9	11.7

Chart category

Managerial & professional

Managerial & professional

Managerial & professional

Other non-manual

Manual

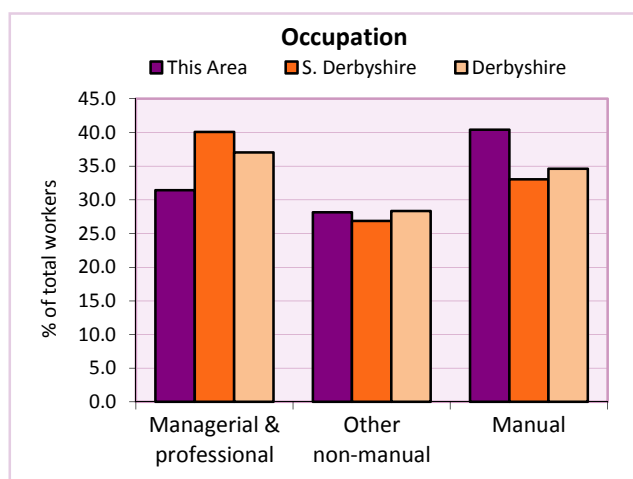
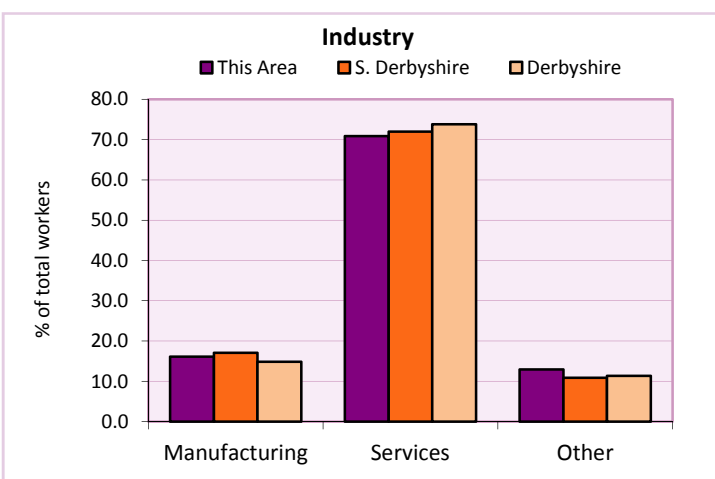
Other non-manual

Other non-manual

Manual

Manual

Table KS608EW



For an **explanation** of the various terms used in these tables, please see the accompanying **Glossary**.

**Extension profiles** covering the following topics in more detail will also be available:

**Population, Economic Activity, Equalities, Health, Households, and Housing.**

**Profiles** in Adobe Acrobat (pdf) format can be downloaded from the Derbyshire Observatory web site, which also provides interactive maps and charts - <http://observatory.derbyshire.gov.uk>

**Please note that figures vary across the Census Profiles as different denominators are used. 2011 Census Table reference numbers are provided beneath each individual table in the Census Profiles should you require further information.**

Version: 6.31