

Barms

Area type and code
Ward (E05003389)

Population

Population change since 2001

Change in numbers	% change		
	This Area	High Peak	Derbyshire
+20	+1.0	+1.6	+4.8

2011 Census Table KS101EW and 2001 Census Table S001

Residents

	Number
Total resident population	1,945
- in households	1,917
- in communal establishments	28

Table KS101EW

Density of population

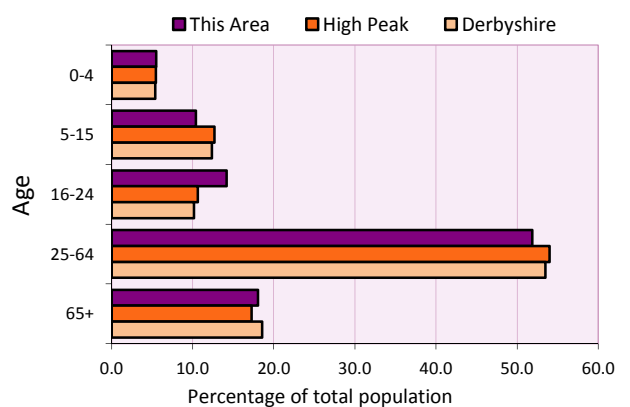
Area (hectares)	Persons per hectare		
	This Area	High Peak	Derbyshire
199	9.8	1.7	3.0

Table KS101EW

Age structure	Number of people	% of total population		
		This Area	High Peak	Derbyshire
0-4 years	107	5.5	5.5	5.4
5-15 years	202	10.4	12.7	12.4
16-24 years	276	14.2	10.6	10.2
25-64 years	1,009	51.9	54.0	53.5
65 and over	351	18.0	17.2	18.6

Table KS102EW

Age structure of the population



Households

Total households

Number	Average household size (persons)		
	This Area	High Peak	Derbyshire
902	2.16	2.33	2.31

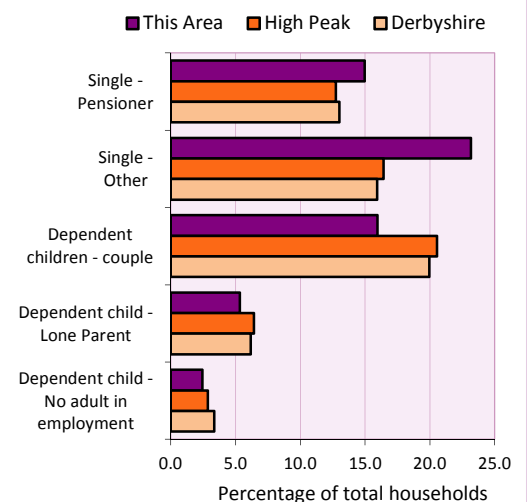
Table KS101EW and KS403EW

Household types

Number	% of total households			
	This Area	High Peak	Derbyshire	
Single person households	344	38.1	29.2	28.9
Pensioner	135	15.0	12.7	13.0
Other	209	23.2	16.4	15.9
Households with dependent children				
All	199	22.1	28.4	27.6
Couple	144	16.0	20.5	19.9
Lone parent	48	5.3	6.4	6.2
No adult in employment	22	2.4	2.9	3.4
One person with a long-term health problem - or disability	29	3.2	4.4	4.5

Table KS105EW and KS106EW

Household types



Car/van ownership

Number of households	% of total households			
	This Area	High Peak	Derbyshire	
No car or van	283	31.4	19.6	20.1

Table KS404EW

2011 Census: Summary Profile

Barms

Area type and code
Ward (E05003389)

Accommodation

Tenure	Number of households	% of total households		
		This Area	High Peak	Derbyshire
Owner-occupied	560	62.1	72.6	71.4
Rented from council/housing association	108	12.0	12.7	15.3
Private/other rented	218	24.2	13.4	12.0
Living rent free	16	1.8	1.2	1.3

Table KS402EW

Amenities	Number of households	% of total households		
		This Area	High Peak	Derbyshire
Overcrowded households	85	9.4	4.8	3.7
Households without central heating	34	3.8	2.3	2.0

Table KS403EW

Total household spaces	957
-------------------------------	------------

Table KS401EW

Type of accommodation	Number of household spaces	% of total household spaces		
		This Area	High Peak	Derbyshire
Detached	91	9.5	23.5	31.8
Semi-detached	239	25.0	29.2	38.7
Terraced	374	39.1	34.4	20.6
Flat/maisonette/apartment	252	26.3	12.6	8.6
Other	1	0.1	0.2	0.3

Table KS401EW

Marital status

Marital status	Number of people	% of people aged 16+		
		This Area	High Peak	Derbyshire
Single	664	40.6	30.9	29.3
Married	594	36.3	49.1	50.5
Same-sex civil partnership	4	0.2	0.2	0.2
Separated	38	2.3	2.4	2.4
Divorced	206	12.6	9.9	9.9
Widowed / surviving partner	130	7.9	7.4	7.7

Table KS103EW

Health

Health	Number of people	% of total population		
		This Area	High Peak	Derbyshire
People whose day-to-day activities are limited	397	20.4	18.1	20.4
People with 'bad' general health	121	6.2	5.2	6.2
People providing unpaid care	231	11.9	11.3	12.1

Table KS301EW

2011 Census: Summary Profile

Barms

Area type and code
Ward (E05003389)

Ethnicity

Ethnic group	Number of people	% of total population		
		This Area	High Peak	Derbyshire
White British	1,857	95.5	95.9	95.8
Black and Minority Ethnic (BME)	88	4.5	4.1	4.2
White Other	43	2.2	2.0	1.7
Mixed/multiple ethnic groups	22	1.1	1.0	0.9
Asian/Asian British	13	0.7	0.8	1.1
Black/African/Caribbean/Black British	7	0.4	0.2	0.4
Other ethnic group	3	0.2	0.1	0.1

Table KS201EW

Religion

Religion	Number of people	% of total population		
		This Area	High Peak	Derbyshire
Christian	1,180	60.7	64.1	63.6
Buddhist	3	0.2	0.3	0.2
Hindu	1	0.1	0.1	0.2
Jewish	1	0.1	0.0	0.0
Muslim	3	0.2	0.2	0.3
Sikh	1	0.1	0.0	0.3
Other religions	15	0.8	0.4	0.4
No religion	595	30.6	27.6	28.0
Not stated	146	7.5	7.2	7.0

Table KS209EW

Migration

Country of birth by year of arrival in the UK	Number of people	% of total residents		
		This Area	High Peak	Derbyshire
From within the UK total	1,869	96.1	96.4	96.7
From outside the UK total	76	3.9	3.6	3.3
<i>of which</i>				
- Ireland	5	0.3	0.5	0.3
- Other EU country	32	1.6	0.8	0.9
- European (Non-EU country)	10	0.5	0.2	0.1
- Other parts of the world	29	1.5	1.7	1.6

Table LC2804EW

Length of residence in the UK	Number of people	% of total residents		
		This Area	High Peak	Derbyshire
Less than 2 years	4	0.2	0.2	0.3
2 years or more but less than 5 years	17	0.9	0.5	0.5
5 years or more but less than 10 years	14	0.7	0.6	0.6
10 years or more	41	2.1	2.2	2.0
Born in the UK	1,869	96.1	96.4	96.7

Table QS803EW

2011 Census: Summary Profile

Barms

Area type and code
Ward (E05003389)

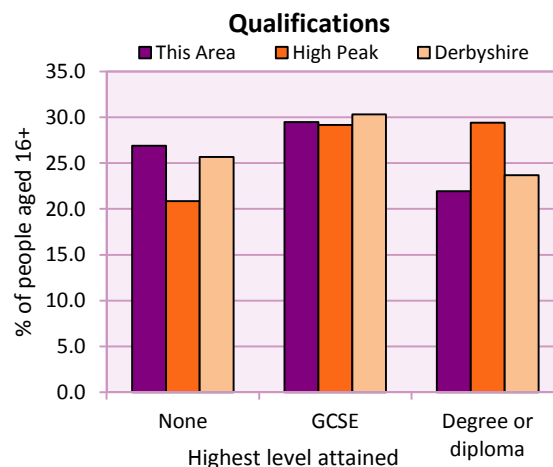
Education

Full-time students	Number	% of population in age group		
		This Area	High Peak	Derbyshire
aged 16-17	34	89.5	88.0	86.3
aged 18-74	99	6.8	3.9	2.9

Table KS501EW

Qualifications	People (aged 16+)	% of all people aged 16+		
		This Area	High Peak	Derbyshire
No qualifications	440	26.9	20.9	25.7
Highest level attained				
GCSE	482	29.5	29.2	30.3
Degree or diploma	359	21.9	29.4	23.7

Table KS501EW



Workforce

Economic activity	People aged 16-74								
	This Area			High Peak			Derbyshire		
	Males	Females	All	Males	Females	All	Males	Females	All
Economically active									
- number	564	484	1,048	25,645	22,915	48,560	211,349	185,704	397,053
- rate (%)	73.6	67.2	70.5	76.3	67.8	72.1	74.8	65.1	69.9
All unemployed									
- number	58	24	82	1,563	1,013	2,576	13,541	8,665	22,206
- rate (%)	7.6	3.3	5.5	4.7	3.0	3.8	4.8	3.0	3.9
Economically inactive									
- number	202	236	438	7,965	10,864	18,829	71,240	99,505	170,745
- rate (%)	26.4	32.8	29.5	23.7	32.2	27.9	25.2	34.9	30.1

Table KS601EW KS602EW and KS603EW

Hours worked	% of people aged 16-74 in employment					
	Full time (more than 30 hrs)			Part time (30 hrs or less)		
	This Area	High Peak	Derbyshire	This Area	High Peak	Derbyshire
All	68.1	70.0	70.3	31.9	30.0	29.7
Males	83.8	85.6	86.5	16.2	14.4	13.5
Females	50.7	52.8	52.1	49.3	47.2	47.9

Table KS604EW

People travelling to work	This Area	High Peak	Derbyshire
- works mainly at or from home %	8.9	12.2	10.5
- by car or van %	53.3	59.4	65.6
- by public transport or taxi %	4.5	8.4	6.6
- by all other methods of travel %	33.3	20.0	17.4
Average distance travelled km	13.1	15.7	15.2

Table LC7101EW and QS702EW

2011 Census: Summary Profile

Barms

Area type and code
Ward (E05003389)

Workforce (continued)

Industry (people aged 16-74 in employment)	Number of workers	% of people aged 16-74 in employment		
		This Area	High Peak	Derbyshire
Agriculture, forestry and fishing	8	0.8	1.0	1.0
Mining, quarrying and utilities	26	2.7	2.0	1.9
Manufacturing	142	15.0	13.3	14.9
Construction	66	7.0	7.6	8.5
Wholesale and retail	150	15.8	14.4	16.6
Business services	263	27.7	27.4	25.1
Public services	235	24.8	29.6	27.5
Other services	58	6.1	4.7	4.5

Chart category

Other

Other

Manufacturing

Other

Services

Services

Services

Services

Table KS605EW

Occupation (people aged 16-74 in employment)	Number of workers	% of people aged 16-74 in employment		
		This Area	High Peak	Derbyshire
Managers, directors & senior officials	67	7.1	11.3	10.9
Professional	115	12.1	17.8	15.1
Associate professional & technical	87	9.2	11.7	11.0
Administrative & secretarial	87	9.2	10.1	10.9
Skilled trades	143	15.1	12.6	13.3
Caring, leisure & other services	106	11.2	10.0	9.6
Sales & customer service	83	8.8	7.0	7.9
Process, plant & machine operatives	108	11.4	9.0	9.6
Elementary occupations	152	16.0	10.4	11.7

Chart category

Managerial & professional

Managerial & professional

Managerial & professional

Other non-manual

Manual

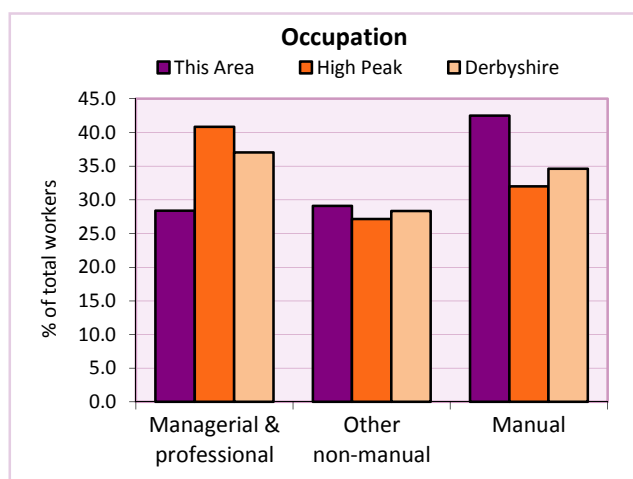
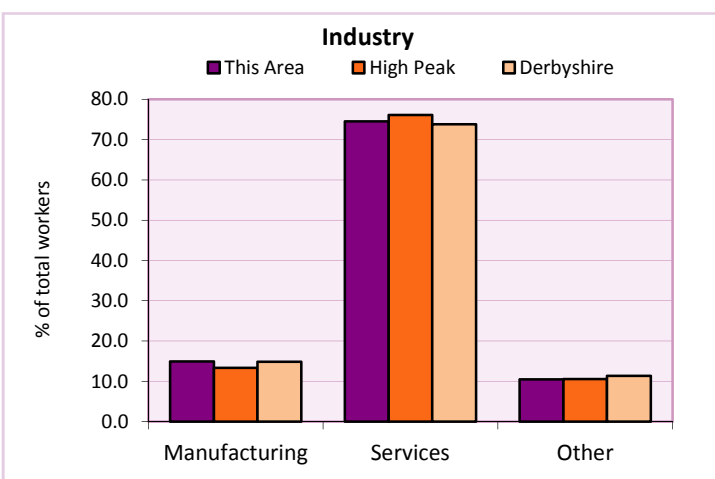
Other non-manual

Other non-manual

Manual

Manual

Table KS608EW



For an **explanation** of the various terms used in these tables, please see the accompanying **Glossary**.

Extension profiles covering the following topics in more detail will also be available:

Population, Economic Activity, Equalities, Health, Households, and Housing.

Profiles in Adobe Acrobat (pdf) format can be downloaded from the Derbyshire Observatory web site, which also provides interactive maps and charts - <http://observatory.derbyshire.gov.uk>

Please note that figures vary across the Census Profiles as different denominators are used. 2011 Census Table reference numbers are provided beneath each individual table in the Census Profiles should you require further information.

Version: 6.31