

Blackbrook

Area type and code
Ward (E05003390)

Population

Population change since 2001

Change in numbers	% change		
	This Area	High Peak	Derbyshire
-40	-1.0	+1.6	+4.8

2011 Census Table KS101EW and 2001 Census Table S001

Residents

	Number
Total resident population	3,920
- in households	3,843
- in communal establishments	77

Table KS101EW

Density of population

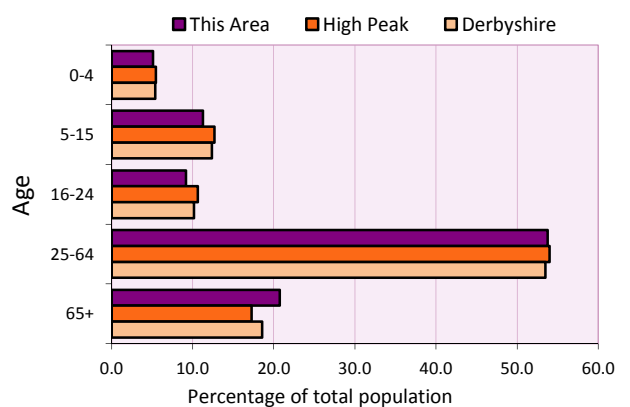
Area (hectares)	Persons per hectare		
	This Area	High Peak	Derbyshire
3,245	1.2	1.7	3.0

Table KS101EW

Age structure	Number of people	% of total population		
		This Area	High Peak	Derbyshire
0-4 years	200	5.1	5.5	5.4
5-15 years	441	11.3	12.7	12.4
16-24 years	360	9.2	10.6	10.2
25-64 years	2,107	53.8	54.0	53.5
65 and over	812	20.7	17.2	18.6

Table KS102EW

Age structure of the population



Households

Total households

Number	Average household size (persons)		
	This Area	High Peak	Derbyshire
1,629	2.41	2.33	2.31

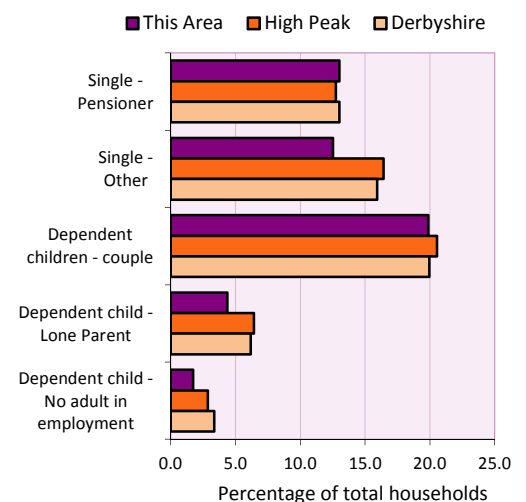
Table KS101EW and KS403EW

Household types

Number	% of total households			
	This Area	High Peak	Derbyshire	
Single person households	416	25.5	29.2	28.9
Pensioner	212	13.0	12.7	13.0
Other	204	12.5	16.4	15.9
Households with dependent children				
All	420	25.8	28.4	27.6
Couple	324	19.9	20.5	19.9
Lone parent	71	4.4	6.4	6.2
No adult in employment	28	1.7	2.9	3.4
One person with a long-term health problem - or disability	50	3.1	4.4	4.5

Table KS105EW and KS106EW

Household types



Car/van ownership

Number of households	% of total households			
	This Area	High Peak	Derbyshire	
No car or van	153	9.4	19.6	20.1

Table KS404EW

2011 Census: Summary Profile

Blackbrook

Area type and code
Ward (E05003390)

Accommodation

Tenure	Number of households	% of total households		
		This Area	High Peak	Derbyshire
Owner-occupied	1,370	84.1	72.6	71.4
Rented from council/housing association	95	5.8	12.7	15.3
Private/other rented	141	8.7	13.4	12.0
Living rent free	23	1.4	1.2	1.3

Table KS402EW

Amenities	Number of households	% of total households		
		This Area	High Peak	Derbyshire
Overcrowded households	32	2.0	4.8	3.7
Households without central heating	30	1.8	2.3	2.0

Table KS403EW

Total household spaces	1,724
-------------------------------	--------------

Table KS401EW

Type of accommodation	Number of household spaces	% of total household spaces		
		This Area	High Peak	Derbyshire
Detached	651	37.8	23.5	31.8
Semi-detached	509	29.5	29.2	38.7
Terraced	460	26.7	34.4	20.6
Flat/maisonette/apartment	89	5.2	12.6	8.6
Other	15	0.9	0.2	0.3

Table KS401EW

Marital status

Marital status	Number of people	% of people aged 16+		
		This Area	High Peak	Derbyshire
Single	852	26.0	30.9	29.3
Married	1,798	54.8	49.1	50.5
Same-sex civil partnership	16	0.5	0.2	0.2
Separated	64	2.0	2.4	2.4
Divorced	292	8.9	9.9	9.9
Widowed / surviving partner	257	7.8	7.4	7.7

Table KS103EW

Health

Health	Number of people	% of total population		
		This Area	High Peak	Derbyshire
People whose day-to-day activities are limited	689	17.6	18.1	20.4
People with 'bad' general health	158	4.0	5.2	6.2
People providing unpaid care	475	12.1	11.3	12.1

Table KS301EW

2011 Census: Summary Profile

Blackbrook

Area type and code
Ward (E05003390)

Ethnicity

Ethnic group	Number of people	% of total population		
		This Area	High Peak	Derbyshire
White British	3,785	96.6	95.9	95.8
Black and Minority Ethnic (BME)	135	3.4	4.1	4.2
White Other	75	1.9	2.0	1.7
Mixed/multiple ethnic groups	35	0.9	1.0	0.9
Asian/Asian British	22	0.6	0.8	1.1
Black/African/Caribbean/Black British	0	0.0	0.2	0.4
Other ethnic group	3	0.1	0.1	0.1

Table KS201EW

Religion

Religion	Number of people	% of total population		
		This Area	High Peak	Derbyshire
Christian	2,445	62.4	64.1	63.6
Buddhist	14	0.4	0.3	0.2
Hindu	4	0.1	0.1	0.2
Jewish	4	0.1	0.0	0.0
Muslim	1	0.0	0.2	0.3
Sikh	1	0.0	0.0	0.3
Other religions	18	0.5	0.4	0.4
No religion	1,109	28.3	27.6	28.0
Not stated	324	8.3	7.2	7.0

Table KS209EW

Migration

Country of birth by year of arrival in the UK	Number of people	% of total residents		
		This Area	High Peak	Derbyshire
From within the UK total	3,772	96.2	96.4	96.7
From outside the UK total	148	3.8	3.6	3.3
<i>of which</i>				
- Ireland	13	0.3	0.5	0.3
- Other EU country	46	1.2	0.8	0.9
- European (Non-EU country)	22	0.6	0.2	0.1
- Other parts of the world	67	1.7	1.7	1.6

Table LC2804EW

Length of residence in the UK	Number of people	% of total residents		
		This Area	High Peak	Derbyshire
Less than 2 years	5	0.1	0.2	0.3
2 years or more but less than 5 years	20	0.5	0.5	0.5
5 years or more but less than 10 years	23	0.6	0.6	0.6
10 years or more	100	2.6	2.2	2.0
Born in the UK	3,772	96.2	96.4	96.7

Table QS803EW

2011 Census: Summary Profile

Blackbrook

Area type and code
Ward (E05003390)

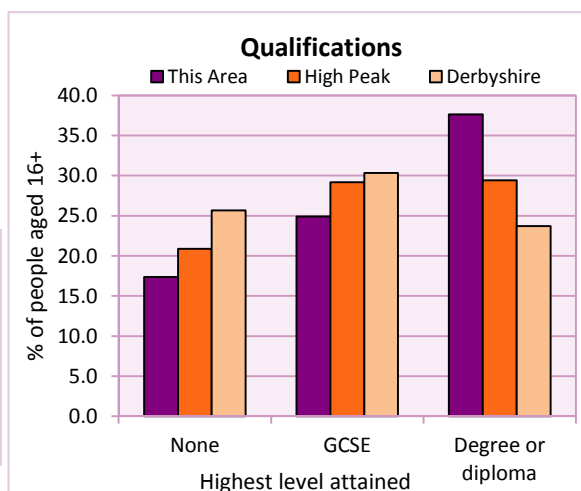
Education

Full-time students	Number	% of population in age group		
		This Area	High Peak	Derbyshire
aged 16-17	86	88.7	88.0	86.3
aged 18-74	88	3.1	3.9	2.9

Table KS501EW

Qualifications	People (aged 16+)	% of all people aged 16+		
		This Area	High Peak	Derbyshire
No qualifications	569	17.4	20.9	25.7
Highest level attained				
GCSE	817	24.9	29.2	30.3
Degree or diploma	1,234	37.6	29.4	23.7

Table KS501EW



Workforce

Economic activity	People aged 16-74								
	This Area			High Peak			Derbyshire		
	Males	Females	All	Males	Females	All	Males	Females	All
Economically active									
- number	1,131	987	2,118	25,645	22,915	48,560	211,349	185,704	397,053
- rate (%)	77.0	67.8	72.4	76.3	67.8	72.1	74.8	65.1	69.9
All unemployed									
- number	37	26	63	1,563	1,013	2,576	13,541	8,665	22,206
- rate (%)	2.5	1.8	2.2	4.7	3.0	3.8	4.8	3.0	3.9
Economically inactive									
- number	338	468	806	7,965	10,864	18,829	71,240	99,505	170,745
- rate (%)	23.0	32.2	27.6	23.7	32.2	27.9	25.2	34.9	30.1

Table KS601EW KS602EW and KS603EW

Hours worked	% of people aged 16-74 in employment					
	Full time (more than 30 hrs)			Part time (30 hrs or less)		
	This Area	High Peak	Derbyshire	This Area	High Peak	Derbyshire
All	71.0	70.0	70.3	29.0	30.0	29.7
Males	85.4	85.6	86.5	14.6	14.4	13.5
Females	54.6	52.8	52.1	45.4	47.2	47.9

Table KS604EW

People travelling to work	This Area	High Peak	Derbyshire
- works mainly at or from home %	16.5	12.2	10.5
- by car or van %	63.4	59.4	65.6
- by public transport or taxi %	8.7	8.4	6.6
- by all other methods of travel %	11.4	20.0	17.4
Average distance travelled km	19.9	15.7	15.2

Table LC7101EW and QS702EW

2011 Census: Summary Profile

Blackbrook

Area type and code
Ward (E05003390)

Workforce (continued)

Industry (people aged 16-74 in employment)	Number of workers	% of people aged 16-74 in employment		
		This Area	High Peak	Derbyshire
Agriculture, forestry and fishing	40	2.0	1.0	1.0
Mining, quarrying and utilities	42	2.1	2.0	1.9
Manufacturing	265	13.0	13.3	14.9
Construction	178	8.7	7.6	8.5
Wholesale and retail	236	11.5	14.4	16.6
Business services	553	27.1	27.4	25.1
Public services	610	29.8	29.6	27.5
Other services	120	5.9	4.7	4.5

Chart category

Other

Other

Manufacturing

Other

Services

Services

Services

Services

Table KS605EW

Occupation (people aged 16-74 in employment)	Number of workers	% of people aged 16-74 in employment		
		This Area	High Peak	Derbyshire
Managers, directors & senior officials	280	13.7	11.3	10.9
Professional	437	21.4	17.8	15.1
Associate professional & technical	258	12.6	11.7	11.0
Administrative & secretarial	217	10.6	10.1	10.9
Skilled trades	284	13.9	12.6	13.3
Caring, leisure & other services	193	9.4	10.0	9.6
Sales & customer service	107	5.2	7.0	7.9
Process, plant & machine operatives	135	6.6	9.0	9.6
Elementary occupations	133	6.5	10.4	11.7

Chart category

Managerial & professional

Managerial & professional

Managerial & professional

Other non-manual

Manual

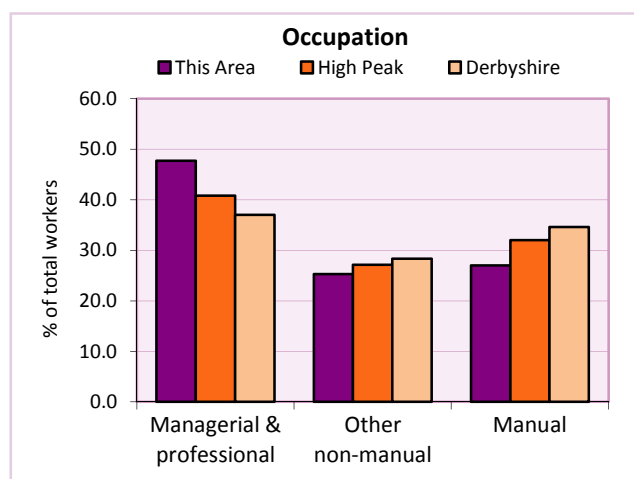
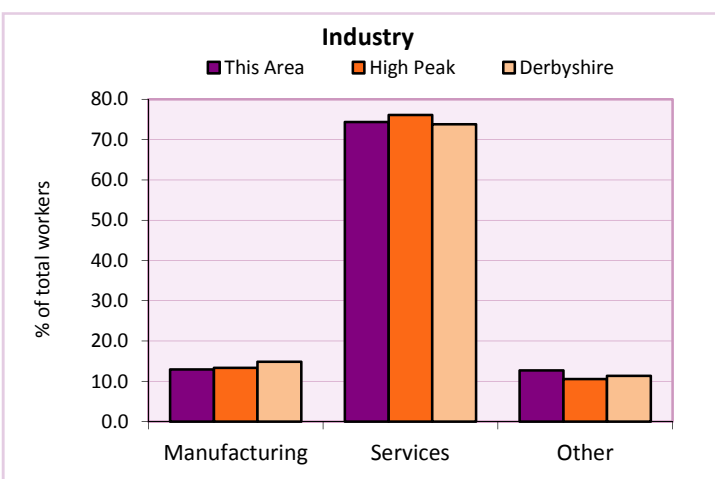
Other non-manual

Other non-manual

Manual

Manual

Table KS608EW



For an **explanation** of the various terms used in these tables, please see the accompanying **Glossary**.

Extension profiles covering the following topics in more detail will also be available:

Population, Economic Activity, Equalities, Health, Households, and Housing.

Profiles in Adobe Acrobat (pdf) format can be downloaded from the Derbyshire Observatory web site, which also provides interactive maps and charts - <http://observatory.derbyshire.gov.uk>

Please note that figures vary across the Census Profiles as different denominators are used. 2011 Census Table reference numbers are provided beneath each individual table in the Census Profiles should you require further information.

Version: 6.31