

## Burbage

Area type and code  
Ward (E05003391)

### Population

#### Population change since 2001

Change in numbers	% change		
	This Area	High Peak	Derbyshire
+560	+28.3	+1.6	+4.8

2011 Census Table KS101EW and 2001 Census Table S001

#### Residents

	Number
Total resident population	2,540
- in households	2,536
- in communal establishments	4

Table KS101EW

#### Density of population

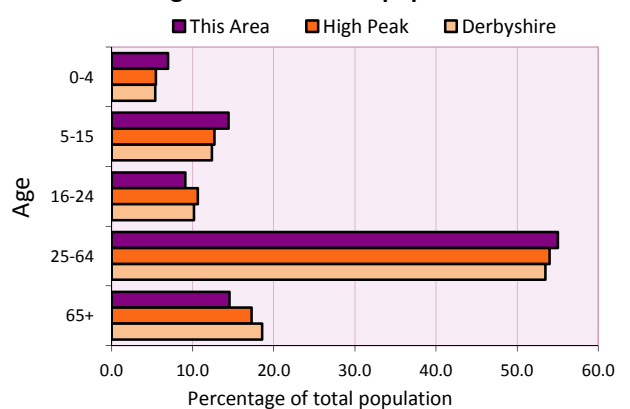
Area (hectares)	Persons per hectare		
	This Area	High Peak	Derbyshire
5,362	0.5	1.7	3.0

Table KS101EW

Age structure	Number of people	% of total population		
		This Area	High Peak	Derbyshire
0-4 years	177	7.0	5.5	5.4
5-15 years	366	14.4	12.7	12.4
16-24 years	231	9.1	10.6	10.2
25-64 years	1,397	55.0	54.0	53.5
65 and over	369	14.5	17.2	18.6

Table KS102EW

#### Age structure of the population



### Households

#### Total households

Number	Average household size (persons)		
	This Area	High Peak	Derbyshire
1,016	2.50	2.33	2.31

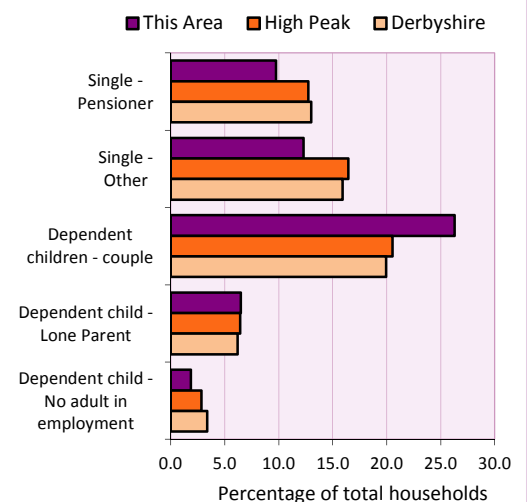
Table KS101EW and KS403EW

#### Household types

Number	% of total households			
	This Area	High Peak	Derbyshire	
Single person households	224	22.0	29.2	28.9
Pensioner	99	9.7	12.7	13.0
Other	125	12.3	16.4	15.9
Households with dependent children				
All	351	34.5	28.4	27.6
Couple	267	26.3	20.5	19.9
Lone parent	66	6.5	6.4	6.2
No adult in employment	19	1.9	2.9	3.4
One person with a long-term health problem - or disability	48	4.7	4.4	4.5

Table KS105EW and KS106EW

#### Household types



#### Car/van ownership

Number of households	% of total households			
	This Area	High Peak	Derbyshire	
No car or van	89	8.8	19.6	20.1

Table KS404EW

# 2011 Census: Summary Profile

## Burbage

Area type and code  
Ward (E05003391)

### Accommodation

Tenure	Number of households	% of total households		
		This Area	High Peak	Derbyshire
Owner-occupied	866	85.2	72.6	71.4
Rented from council/housing association	34	3.3	12.7	15.3
Private/other rented	108	10.6	13.4	12.0
Living rent free	8	0.8	1.2	1.3

Table KS402EW

Amenities	Number of households	% of total households		
		This Area	High Peak	Derbyshire
Overcrowded households	20	2.0	4.8	3.7
Households without central heating	28	2.8	2.3	2.0

Table KS403EW

<b>Total household spaces</b>	<b>1,056</b>
-------------------------------	--------------

Table KS401EW

Type of accommodation	Number of household spaces	% of total household spaces		
		This Area	High Peak	Derbyshire
Detached	297	28.1	23.5	31.8
Semi-detached	435	41.2	29.2	38.7
Terraced	234	22.2	34.4	20.6
Flat/maisonette/apartment	90	8.5	12.6	8.6
Other	0	0.0	0.2	0.3

Table KS401EW

### Marital status

Marital status	Number of people	% of people aged 16+		
		This Area	High Peak	Derbyshire
Single	537	26.9	30.9	29.3
Married	1,129	56.5	49.1	50.5
Same-sex civil partnership	1	0.1	0.2	0.2
Separated	31	1.6	2.4	2.4
Divorced	185	9.3	9.9	9.9
Widowed / surviving partner	114	5.7	7.4	7.7

Table KS103EW

### Health

Health	Number of people	% of total population		
		This Area	High Peak	Derbyshire
People whose day-to-day activities are limited	364	14.3	18.1	20.4
People with 'bad' general health	86	3.4	5.2	6.2
People providing unpaid care	284	11.2	11.3	12.1

Table KS301EW

# 2011 Census: Summary Profile

Burbage

Area type and code  
Ward (E05003391)

## Ethnicity

Ethnic group	Number of people	% of total population		
		This Area	High Peak	Derbyshire
White British	2,456	96.7	95.9	95.8
Black and Minority Ethnic (BME)	84	3.3	4.1	4.2
White Other	47	1.9	2.0	1.7
Mixed/multiple ethnic groups	24	0.9	1.0	0.9
Asian/Asian British	11	0.4	0.8	1.1
Black/African/Caribbean/Black British	0	0.0	0.2	0.4
Other ethnic group	2	0.1	0.1	0.1

Table KS201EW

## Religion

Religion	Number of people	% of total population		
		This Area	High Peak	Derbyshire
Christian	1,661	65.4	64.1	63.6
Buddhist	5	0.2	0.3	0.2
Hindu	1	0.0	0.1	0.2
Jewish	0	0.0	0.0	0.0
Muslim	0	0.0	0.2	0.3
Sikh	0	0.0	0.0	0.3
Other religions	4	0.2	0.4	0.4
No religion	678	26.7	27.6	28.0
Not stated	191	7.5	7.2	7.0

Table KS209EW

## Migration

Country of birth by year of arrival in the UK	Number of people	% of total residents		
		This Area	High Peak	Derbyshire
From within the UK total	2,453	96.6	96.4	96.7
From outside the UK total	87	3.4	3.6	3.3
<i>of which</i>				
- Ireland	10	0.4	0.5	0.3
- Other EU country	27	1.1	0.8	0.9
- European (Non-EU country)	14	0.6	0.2	0.1
- Other parts of the world	36	1.4	1.7	1.6

Table LC2804EW

Length of residence in the UK	Number of people	% of total residents		
		This Area	High Peak	Derbyshire
Less than 2 years	13	0.5	0.2	0.3
2 years or more but less than 5 years	8	0.3	0.5	0.5
5 years or more but less than 10 years	8	0.3	0.6	0.6
10 years or more	58	2.3	2.2	2.0
Born in the UK	2,453	96.6	96.4	96.7

Table QS803EW

# 2011 Census: Summary Profile

Burbage

Area type and code  
Ward (E05003391)

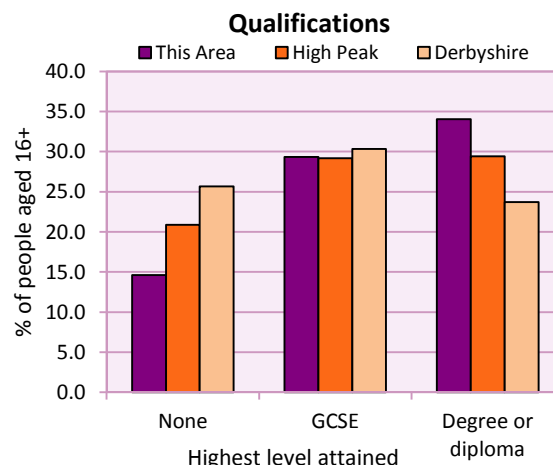
## Education

Full-time students	Number	% of population in age group		
		This Area	High Peak	Derbyshire
aged 16-17	59	89.4	88.0	86.3
aged 18-74	50	2.8	3.9	2.9

Table KS501EW

Qualifications	People (aged 16+)	% of all people aged 16+		
		This Area	High Peak	Derbyshire
No qualifications	292	14.6	20.9	25.7
Highest level attained				
GCSE	586	29.3	29.2	30.3
Degree or diploma	680	34.1	29.4	23.7

Table KS501EW



## Workforce

Economic activity	People aged 16-74								
	This Area			High Peak			Derbyshire		
	Males	Females	All	Males	Females	All	Males	Females	All
Economically active									
- number	744	658	1,402	25,645	22,915	48,560	211,349	185,704	397,053
- rate (%)	80.8	72.1	76.5	76.3	67.8	72.1	74.8	65.1	69.9
All unemployed									
- number	30	19	49	1,563	1,013	2,576	13,541	8,665	22,206
- rate (%)	3.3	2.1	2.7	4.7	3.0	3.8	4.8	3.0	3.9
Economically inactive									
- number	177	254	431	7,965	10,864	18,829	71,240	99,505	170,745
- rate (%)	19.2	27.9	23.5	23.7	32.2	27.9	25.2	34.9	30.1

Table KS601EW KS602EW and KS603EW

Hours worked	% of people aged 16-74 in employment					
	Full time (more than 30 hrs)			Part time (30 hrs or less)		
	This Area	High Peak	Derbyshire	This Area	High Peak	Derbyshire
All	67.4	70.0	70.3	32.6	30.0	29.7
Males	85.0	85.6	86.5	15.0	14.4	13.5
Females	47.6	52.8	52.1	52.4	47.2	47.9

Table KS604EW

People travelling to work	This Area	High Peak	Derbyshire
- works mainly at or from home %	15.2	12.2	10.5
- by car or van %	66.1	59.4	65.6
- by public transport or taxi %	3.5	8.4	6.6
- by all other methods of travel %	15.2	20.0	17.4
Average distance travelled km	15.2	15.7	15.2

Table LC7101EW and QS702EW

# 2011 Census: Summary Profile

Burbage

Area type and code  
Ward (E05003391)

## Workforce (continued)

Industry (people aged 16-74 in employment)	Number of workers	% of people aged 16-74 in employment		
		This Area	High Peak	Derbyshire
Agriculture, forestry and fishing	26	1.9	1.0	1.0
Mining, quarrying and utilities	57	4.2	2.0	1.9
Manufacturing	164	12.2	13.3	14.9
Construction	76	5.6	7.6	8.5
Wholesale and retail	196	14.6	14.4	16.6
Business services	384	28.5	27.4	25.1
Public services	402	29.9	29.6	27.5
Other services	41	3.0	4.7	4.5

### Chart category

Other

Other

Manufacturing

Other

Services

Services

Services

Services

Table KS605EW

Occupation (people aged 16-74 in employment)	Number of workers	% of people aged 16-74 in employment		
		This Area	High Peak	Derbyshire
Managers, directors & senior officials	177	13.2	11.3	10.9
Professional	249	18.5	17.8	15.1
Associate professional & technical	144	10.7	11.7	11.0
Administrative & secretarial	122	9.1	10.1	10.9
Skilled trades	169	12.6	12.6	13.3
Caring, leisure & other services	140	10.4	10.0	9.6
Sales & customer service	86	6.4	7.0	7.9
Process, plant & machine operatives	136	10.1	9.0	9.6
Elementary occupations	123	9.1	10.4	11.7

### Chart category

Managerial & professional

Managerial & professional

Managerial & professional

Other non-manual

Manual

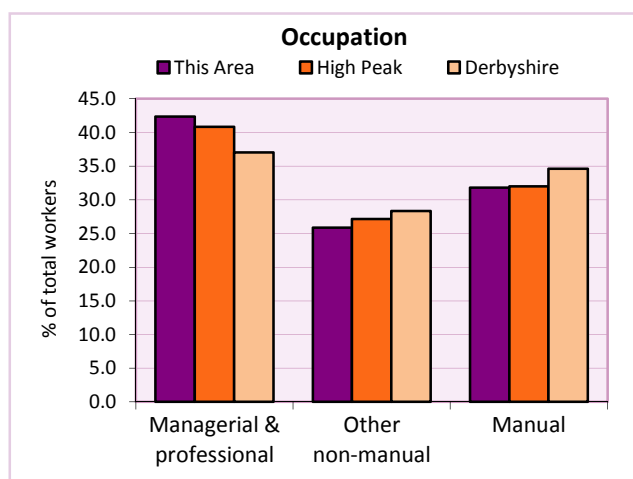
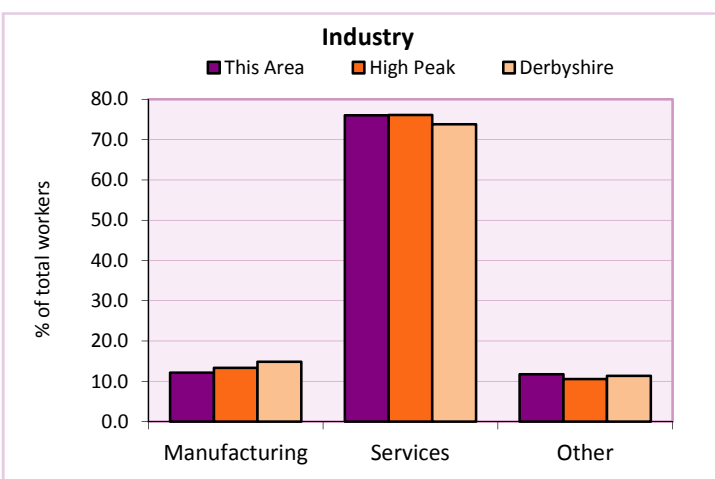
Other non-manual

Other non-manual

Manual

Manual

Table KS608EW



For an **explanation** of the various terms used in these tables, please see the accompanying **Glossary**.

**Extension profiles** covering the following topics in more detail will also be available:

**Population, Economic Activity, Equalities, Health, Households, and Housing.**

**Profiles** in Adobe Acrobat (pdf) format can be downloaded from the Derbyshire Observatory web site, which also provides interactive maps and charts - <http://observatory.derbyshire.gov.uk>

**Please note that figures vary across the Census Profiles as different denominators are used. 2011 Census Table reference numbers are provided beneath each individual table in the Census Profiles should you require further information.**

Version: 6.31