

Buxton Central

Area type and code
Ward (E05003392)

Population

Population change since 2001

Change in numbers	% change		
	This Area	High Peak	Derbyshire
+287	+7.4	+1.6	+4.8

2011 Census Table KS101EW and 2001 Census Table S001

Residents

	Number
Total resident population	4,188
- in households	3,872
- in communal establishments	316

Table KS101EW

Density of population

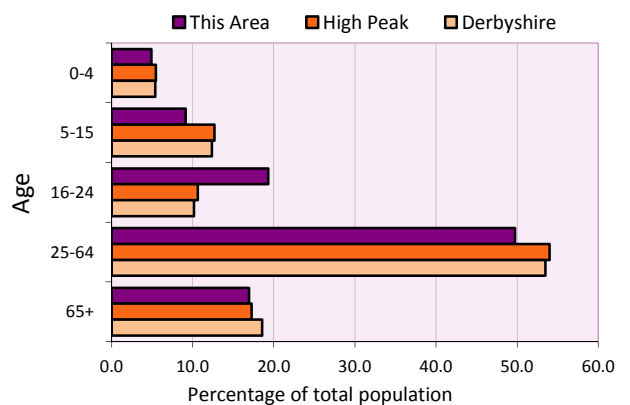
Area (hectares)	Persons per hectare		
	This Area	High Peak	Derbyshire
83	50.7	1.7	3.0

Table KS101EW

Age structure	Number of people	% of total population		
		This Area	High Peak	Derbyshire
0-4 years	205	4.9	5.5	5.4
5-15 years	383	9.1	12.7	12.4
16-24 years	809	19.3	10.6	10.2
25-64 years	2,082	49.7	54.0	53.5
65 and over	709	16.9	17.2	18.6

Table KS102EW

Age structure of the population



Households

Total households

Number	Average household size (persons)		
	This Area	High Peak	Derbyshire
1,927	2.17	2.33	2.31

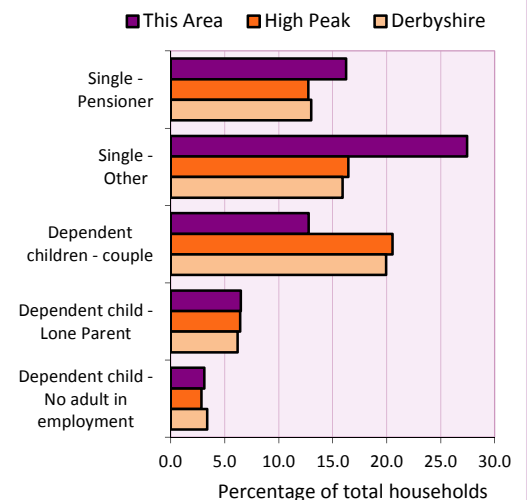
Table KS101EW and KS403EW

Household types

Household types	Number	% of total households		
		This Area	High Peak	Derbyshire
Single person households	842	43.7	29.2	28.9
Pensioner	313	16.2	12.7	13.0
Other	529	27.5	16.4	15.9
Households with dependent children				
All	394	20.4	28.4	27.6
Couple	246	12.8	20.5	19.9
Lone parent	125	6.5	6.4	6.2
No adult in employment	60	3.1	2.9	3.4
One person with a long-term health problem - or disability	53	2.8	4.4	4.5

Table KS105EW and KS106EW

Household types



Car/van ownership

Number of households	% of total households			
	This Area	High Peak	Derbyshire	
No car or van	692	35.9	19.6	20.1

Table KS404EW

2011 Census: Summary Profile

Buxton Central

Area type and code
Ward (E05003392)

Accommodation

Tenure	Number of households	% of total households		
		This Area	High Peak	Derbyshire
Owner-occupied	1,031	53.5	72.6	71.4
Rented from council/housing association	204	10.6	12.7	15.3
Private/other rented	666	34.6	13.4	12.0
Living rent free	26	1.3	1.2	1.3

Table KS402EW

Amenities	Number of households	% of total households		
		This Area	High Peak	Derbyshire
Overcrowded households	225	11.7	4.8	3.7
Households without central heating	63	3.3	2.3	2.0

Table KS403EW

Total household spaces	2,092
-------------------------------	--------------

Table KS401EW

Type of accommodation	Number of household spaces	% of total household spaces		
		This Area	High Peak	Derbyshire
Detached	128	6.1	23.5	31.8
Semi-detached	269	12.9	29.2	38.7
Terraced	696	33.3	34.4	20.6
Flat/maisonette/apartment	999	47.8	12.6	8.6
Other	0	0.0	0.2	0.3

Table KS401EW

Marital status

Marital status	Number of people	% of people aged 16+		
		This Area	High Peak	Derbyshire
Single	1,597	44.4	30.9	29.3
Married	1,180	32.8	49.1	50.5
Same-sex civil partnership	4	0.1	0.2	0.2
Separated	95	2.6	2.4	2.4
Divorced	406	11.3	9.9	9.9
Widowed / surviving partner	318	8.8	7.4	7.7

Table KS103EW

Health

Health	Number of people	% of total population		
		This Area	High Peak	Derbyshire
People whose day-to-day activities are limited	769	18.4	18.1	20.4
People with 'bad' general health	226	5.4	5.2	6.2
People providing unpaid care	386	9.2	11.3	12.1

Table KS301EW

2011 Census: Summary Profile

Buxton Central

Area type and code
Ward (E05003392)

Ethnicity

Ethnic group	Number of people	% of total population		
		This Area	High Peak	Derbyshire
White British	3,830	91.5	95.9	95.8
Black and Minority Ethnic (BME)	358	8.5	4.1	4.2
White Other	197	4.7	2.0	1.7
Mixed/multiple ethnic groups	54	1.3	1.0	0.9
Asian/Asian British	83	2.0	0.8	1.1
Black/African/Caribbean/Black British	15	0.4	0.2	0.4
Other ethnic group	9	0.2	0.1	0.1

Table KS201EW

Religion

Religion	Number of people	% of total population		
		This Area	High Peak	Derbyshire
Christian	2,410	57.5	64.1	63.6
Buddhist	31	0.7	0.3	0.2
Hindu	8	0.2	0.1	0.2
Jewish	1	0.0	0.0	0.0
Muslim	19	0.5	0.2	0.3
Sikh	11	0.3	0.0	0.3
Other religions	26	0.6	0.4	0.4
No religion	1,351	32.3	27.6	28.0
Not stated	331	7.9	7.2	7.0

Table KS209EW

Migration

Country of birth by year of arrival in the UK	Number of people	% of total residents		
		This Area	High Peak	Derbyshire
From within the UK total	3,842	91.7	96.4	96.7
From outside the UK total	346	8.3	3.6	3.3
<i>of which</i>				
- Ireland	37	0.9	0.5	0.3
- Other EU country	123	2.9	0.8	0.9
- European (Non-EU country)	47	1.1	0.2	0.1
- Other parts of the world	139	3.3	1.7	1.6

Table LC2804EW

Length of residence in the UK	Number of people	% of total residents		
		This Area	High Peak	Derbyshire
Less than 2 years	47	1.1	0.2	0.3
2 years or more but less than 5 years	49	1.2	0.5	0.5
5 years or more but less than 10 years	81	1.9	0.6	0.6
10 years or more	169	4.0	2.2	2.0
Born in the UK	3,842	91.7	96.4	96.7

Table QS803EW

2011 Census: Summary Profile

Buxton Central

Area type and code
Ward (E05003392)

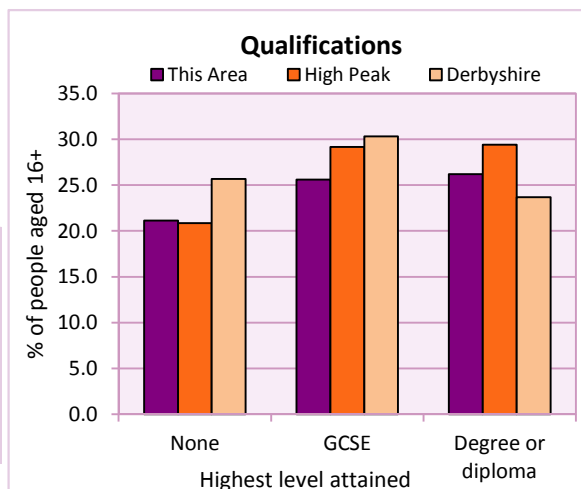
Education

Full-time students	Number	% of population in age group		
		This Area	High Peak	Derbyshire
aged 16-17	89	86.4	88.0	86.3
aged 18-74	455	14.7	3.9	2.9

Table KS501EW

Qualifications	People (aged 16+)	% of all people aged 16+		
		This Area	High Peak	Derbyshire
No qualifications	760	21.1	20.9	25.7
Highest level attained				
GCSE	922	25.6	29.2	30.3
Degree or diploma	943	26.2	29.4	23.7

Table KS501EW



Workforce

Economic activity	People aged 16-74								
	This Area			High Peak			Derbyshire		
	Males	Females	All	Males	Females	All	Males	Females	All
Economically active									
- number	1,230	985	2,215	25,645	22,915	48,560	211,349	185,704	397,053
- rate (%)	73.6	64.1	69.0	76.3	67.8	72.1	74.8	65.1	69.9
All unemployed									
- number	105	55	160	1,563	1,013	2,576	13,541	8,665	22,206
- rate (%)	6.3	3.6	5.0	4.7	3.0	3.8	4.8	3.0	3.9
Economically inactive									
- number	441	552	993	7,965	10,864	18,829	71,240	99,505	170,745
- rate (%)	26.4	35.9	31.0	23.7	32.2	27.9	25.2	34.9	30.1

Table KS601EW KS602EW and KS603EW

Hours worked	% of people aged 16-74 in employment					
	Full time (more than 30 hrs)			Part time (30 hrs or less)		
	This Area	High Peak	Derbyshire	This Area	High Peak	Derbyshire
All	67.0	70.0	70.3	33.0	30.0	29.7
Males	79.7	85.6	86.5	20.3	14.4	13.5
Females	51.5	52.8	52.1	48.5	47.2	47.9

Table KS604EW

People travelling to work	This Area	High Peak	Derbyshire
- works mainly at or from home %	12.6	12.2	10.5
- by car or van %	46.8	59.4	65.6
- by public transport or taxi %	5.5	8.4	6.6
- by all other methods of travel %	35.1	20.0	17.4
Average distance travelled km	15.5	15.7	15.2

Table LC7101EW and QS702EW

2011 Census: Summary Profile

Buxton Central

Area type and code
Ward (E05003392)

Workforce (continued)

Industry (people aged 16-74 in employment)	Number of workers	% of people aged 16-74 in employment		
		This Area	High Peak	Derbyshire
Agriculture, forestry and fishing	5	0.3	1.0	1.0
Mining, quarrying and utilities	58	2.9	2.0	1.9
Manufacturing	245	12.3	13.3	14.9
Construction	126	6.3	7.6	8.5
Wholesale and retail	298	15.0	14.4	16.6
Business services	594	29.8	27.4	25.1
Public services	548	27.5	29.6	27.5
Other services	116	5.8	4.7	4.5

Chart category

Other

Other

Manufacturing

Other

Services

Services

Services

Services

Table KS605EW

Occupation (people aged 16-74 in employment)	Number of workers	% of people aged 16-74 in employment		
		This Area	High Peak	Derbyshire
Managers, directors & senior officials	204	10.3	11.3	10.9
Professional	311	15.6	17.8	15.1
Associate professional & technical	236	11.9	11.7	11.0
Administrative & secretarial	165	8.3	10.1	10.9
Skilled trades	273	13.7	12.6	13.3
Caring, leisure & other services	207	10.4	10.0	9.6
Sales & customer service	172	8.6	7.0	7.9
Process, plant & machine operatives	174	8.7	9.0	9.6
Elementary occupations	248	12.5	10.4	11.7

Chart category

Managerial & professional

Managerial & professional

Managerial & professional

Other non-manual

Manual

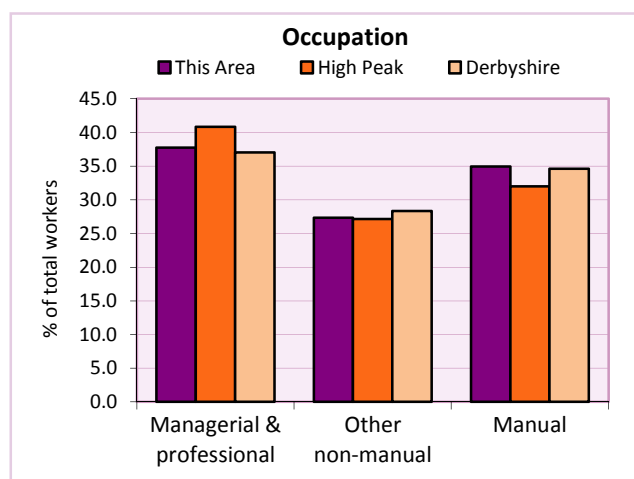
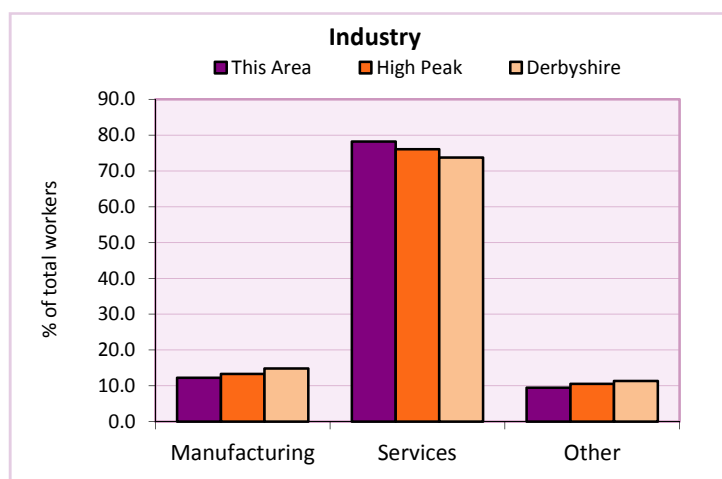
Other non-manual

Other non-manual

Manual

Manual

Table KS608EW



For an **explanation** of the various terms used in these tables, please see the accompanying **Glossary**.

Extension profiles covering the following topics in more detail will also be available:

Population, Economic Activity, Equalities, Health, Households, and Housing.

Profiles in Adobe Acrobat (pdf) format can be downloaded from the Derbyshire Observatory web site, which also provides interactive maps and charts - <http://observatory.derbyshire.gov.uk>

Please note that figures vary across the Census Profiles as different denominators are used. 2011 Census Table reference numbers are provided beneath each individual table in the Census Profiles should you require further information.

Version: 6.31