

## Chapel East

Area type and code  
Ward (E05003393)

### Population

#### Population change since 2001

Change in numbers	% change		
	This Area	High Peak	Derbyshire
+192	+9.4	+1.6	+4.8

2011 Census Table KS101EW and 2001 Census Table S001

#### Residents

	Number
Total resident population	2,238
- in households	2,233
- in communal establishments	5

Table KS101EW

#### Density of population

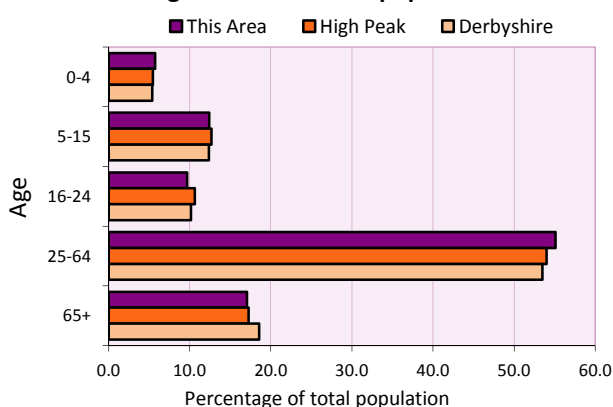
Area (hectares)	Persons per hectare		
	This Area	High Peak	Derbyshire
1,372	1.6	1.7	3.0

Table KS101EW

Age structure	Number of people	% of total population		
		This Area	High Peak	Derbyshire
0-4 years	128	5.7	5.5	5.4
5-15 years	278	12.4	12.7	12.4
16-24 years	217	9.7	10.6	10.2
25-64 years	1,233	55.1	54.0	53.5
65 and over	382	17.1	17.2	18.6

Table KS102EW

#### Age structure of the population



### Households

#### Total households

Number	Average household size (persons)		
	This Area	High Peak	Derbyshire
950	2.36	2.33	2.31

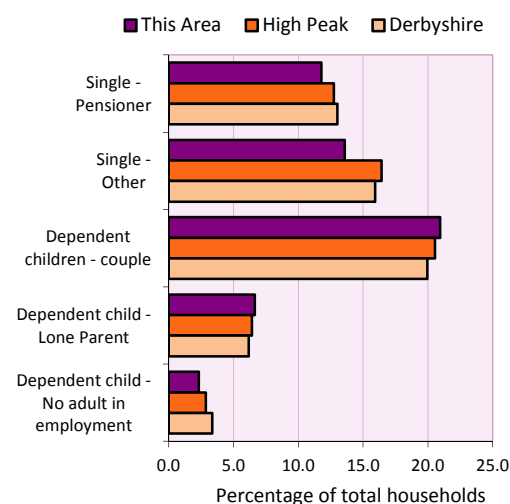
Table KS101EW and KS403EW

#### Household types

Number	% of total households			
	This Area	High Peak	Derbyshire	
Single person households	241	25.4	29.2	28.9
Pensioner	112	11.8	12.7	13.0
Other	129	13.6	16.4	15.9
Households with dependent children				
All	277	29.2	28.4	27.6
Couple	199	20.9	20.5	19.9
Lone parent	63	6.6	6.4	6.2
No adult in employment	22	2.3	2.9	3.4
One person with a long-term health problem - or disability	36	3.8	4.4	4.5

Table KS105EW and KS106EW

#### Household types



#### Car/van ownership

Number of households	% of total households			
	This Area	High Peak	Derbyshire	
No car or van	145	15.3	19.6	20.1

Table KS404EW

# 2011 Census: Summary Profile

Chapel East

Area type and code  
Ward (E05003393)

## Accommodation

Tenure	Number of households	% of total households		
		This Area	High Peak	Derbyshire
Owner-occupied	706	74.3	72.6	71.4
Rented from council/housing association	112	11.8	12.7	15.3
Private/other rented	120	12.6	13.4	12.0
Living rent free	12	1.3	1.2	1.3

Table KS402EW

Amenities	Number of households	% of total households		
		This Area	High Peak	Derbyshire
Overcrowded households	41	4.3	4.8	3.7
Households without central heating	26	2.7	2.3	2.0

Table KS403EW

<b>Total household spaces</b>	<b>998</b>
-------------------------------	------------

Table KS401EW

Type of accommodation	Number of household spaces	% of total household spaces		
		This Area	High Peak	Derbyshire
Detached	307	30.8	23.5	31.8
Semi-detached	362	36.3	29.2	38.7
Terraced	266	26.7	34.4	20.6
Flat/maisonette/apartment	63	6.3	12.6	8.6
Other	0	0.0	0.2	0.3

Table KS401EW

## Marital status

Marital status	Number of people	% of people aged 16+		
		This Area	High Peak	Derbyshire
Single	537	29.3	30.9	29.3
Married	922	50.3	49.1	50.5
Same-sex civil partnership	4	0.2	0.2	0.2
Separated	49	2.7	2.4	2.4
Divorced	178	9.7	9.9	9.9
Widowed / surviving partner	142	7.8	7.4	7.7

Table KS103EW

## Health

Health	Number of people	% of total population		
		This Area	High Peak	Derbyshire
People whose day-to-day activities are limited	390	17.4	18.1	20.4
People with 'bad' general health	112	5.0	5.2	6.2
People providing unpaid care	268	12.0	11.3	12.1

Table KS301EW

# 2011 Census: Summary Profile

Chapel East

Area type and code  
Ward (E05003393)

## Ethnicity

Ethnic group	Number of people	% of total population		
		This Area	High Peak	Derbyshire
White British	2,156	96.3	95.9	95.8
Black and Minority Ethnic (BME)	82	3.7	4.1	4.2
White Other	36	1.6	2.0	1.7
Mixed/multiple ethnic groups	13	0.6	1.0	0.9
Asian/Asian British	17	0.8	0.8	1.1
Black/African/Caribbean/Black British	10	0.4	0.2	0.4
Other ethnic group	6	0.3	0.1	0.1

Table KS201EW

## Religion

Religion	Number of people	% of total population		
		This Area	High Peak	Derbyshire
Christian	1,457	65.1	64.1	63.6
Buddhist	9	0.4	0.3	0.2
Hindu	4	0.2	0.1	0.2
Jewish	0	0.0	0.0	0.0
Muslim	4	0.2	0.2	0.3
Sikh	0	0.0	0.0	0.3
Other religions	12	0.5	0.4	0.4
No religion	598	26.7	27.6	28.0
Not stated	154	6.9	7.2	7.0

Table KS209EW

## Migration

Country of birth by year of arrival in the UK	Number of people	% of total residents		
		This Area	High Peak	Derbyshire
From within the UK total	2,162	96.6	96.4	96.7
From outside the UK total	76	3.4	3.6	3.3
<i>of which</i>				
- Ireland	13	0.6	0.5	0.3
- Other EU country	5	0.2	0.8	0.9
- European (Non-EU country)	15	0.7	0.2	0.1
- Other parts of the world	43	1.9	1.7	1.6

Table LC2804EW

Length of residence in the UK	Number of people	% of total residents		
		This Area	High Peak	Derbyshire
Less than 2 years	6	0.3	0.2	0.3
2 years or more but less than 5 years	10	0.4	0.5	0.5
5 years or more but less than 10 years	14	0.6	0.6	0.6
10 years or more	46	2.1	2.2	2.0
Born in the UK	2,162	96.6	96.4	96.7

Table QS803EW

# 2011 Census: Summary Profile

Chapel East

Area type and code  
Ward (E05003393)

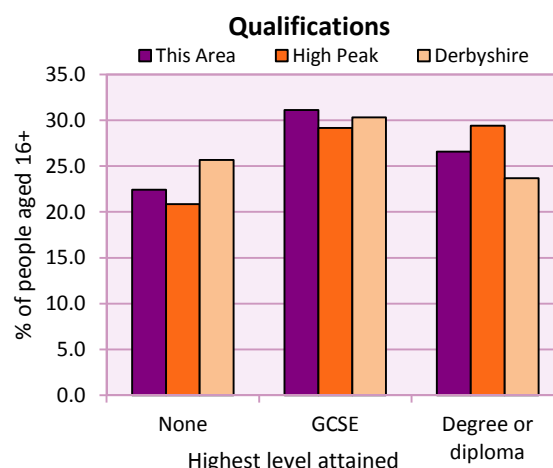
## Education

Full-time students	Number	% of population in age group		
		This Area	High Peak	Derbyshire
aged 16-17	44	86.3	88.0	86.3
aged 18-74	39	2.4	3.9	2.9

Table KS501EW

Qualifications	People (aged 16+)	% of all people aged 16+		
		This Area	High Peak	Derbyshire
No qualifications	411	22.4	20.9	25.7
Highest level attained				
GCSE	570	31.1	29.2	30.3
Degree or diploma	487	26.6	29.4	23.7

Table KS501EW



## Workforce

Economic activity	People aged 16-74								
	This Area			High Peak			Derbyshire		
	Males	Females	All	Males	Females	All	Males	Females	All
Economically active									
- number	656	575	1,231	25,645	22,915	48,560	211,349	185,704	397,053
- rate (%)	80.9	68.5	74.6	76.3	67.8	72.1	74.8	65.1	69.9
All unemployed									
- number	41	24	65	1,563	1,013	2,576	13,541	8,665	22,206
- rate (%)	5.1	2.9	3.9	4.7	3.0	3.8	4.8	3.0	3.9
Economically inactive									
- number	155	265	420	7,965	10,864	18,829	71,240	99,505	170,745
- rate (%)	19.1	31.5	25.4	23.7	32.2	27.9	25.2	34.9	30.1

Table KS601EW KS602EW and KS603EW

Hours worked	% of people aged 16-74 in employment					
	Full time (more than 30 hrs)			Part time (30 hrs or less)		
	This Area	High Peak	Derbyshire	This Area	High Peak	Derbyshire
All	70.0	70.0	70.3	30.0	30.0	29.7
Males	84.7	85.6	86.5	15.3	14.4	13.5
Females	53.6	52.8	52.1	46.4	47.2	47.9

Table KS604EW

People travelling to work	This Area	High Peak	Derbyshire
- works mainly at or from home %	11.8	12.2	10.5
- by car or van %	61.9	59.4	65.6
- by public transport or taxi %	5.5	8.4	6.6
- by all other methods of travel %	20.8	20.0	17.4
Average distance travelled km	16.9	15.7	15.2

Table LC7101EW and QS702EW

# 2011 Census: Summary Profile

Chapel East

Area type and code  
Ward (E05003393)

## Workforce (continued)

Industry (people aged 16-74 in employment)	Number of workers	% of people aged 16-74 in employment		
		This Area	High Peak	Derbyshire
Agriculture, forestry and fishing	20	1.7	1.0	1.0
Mining, quarrying and utilities	18	1.6	2.0	1.9
Manufacturing	182	15.7	13.3	14.9
Construction	95	8.2	7.6	8.5
Wholesale and retail	154	13.3	14.4	16.6
Business services	322	27.8	27.4	25.1
Public services	312	26.9	29.6	27.5
Other services	55	4.7	4.7	4.5

### Chart category

Other

Other

Manufacturing

Other

Services

Services

Services

Services

Table KS605EW

Occupation (people aged 16-74 in employment)	Number of workers	% of people aged 16-74 in employment		
		This Area	High Peak	Derbyshire
Managers, directors & senior officials	104	9.0	11.3	10.9
Professional	196	16.9	17.8	15.1
Associate professional & technical	130	11.2	11.7	11.0
Administrative & secretarial	96	8.3	10.1	10.9
Skilled trades	171	14.8	12.6	13.3
Caring, leisure & other services	108	9.3	10.0	9.6
Sales & customer service	79	6.8	7.0	7.9
Process, plant & machine operatives	141	12.2	9.0	9.6
Elementary occupations	133	11.5	10.4	11.7

### Chart category

Managerial & professional

Managerial & professional

Managerial & professional

Other non-manual

Manual

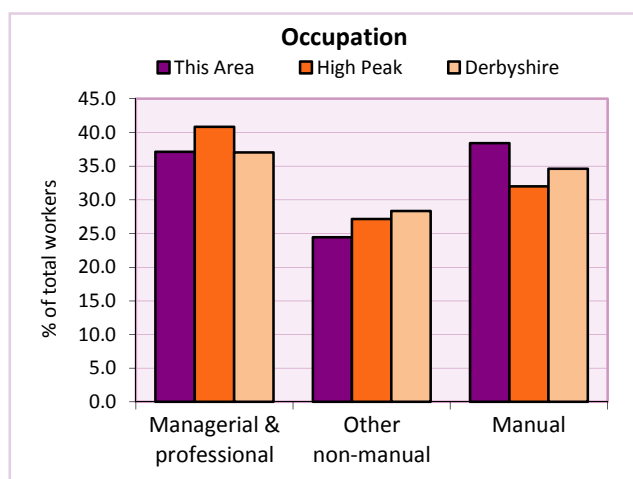
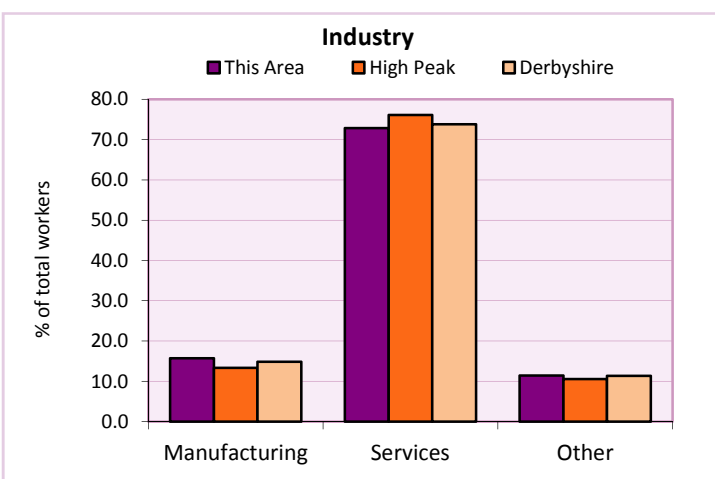
Other non-manual

Other non-manual

Manual

Manual

Table KS608EW



For an **explanation** of the various terms used in these tables, please see the accompanying **Glossary**.

**Extension profiles** covering the following topics in more detail will also be available:

**Population, Economic Activity, Equalities, Health, Households, and Housing.**

**Profiles** in Adobe Acrobat (pdf) format can be downloaded from the Derbyshire Observatory web site, which also provides interactive maps and charts - <http://observatory.derbyshire.gov.uk>

**Please note that figures vary across the Census Profiles as different denominators are used. 2011 Census Table reference numbers are provided beneath each individual table in the Census Profiles should you require further information.**

Version: 6.31