

Chapel West

Area type and code
Ward (E05003394)

Population

Population change since 2001

Change in numbers	% change		
	This Area	High Peak	Derbyshire
-210	-4.8	+1.6	+4.8

2011 Census Table KS101EW and 2001 Census Table S001

Residents

	Number
Total resident population	4,160
- in households	4,118
- in communal establishments	42

Table KS101EW

Density of population

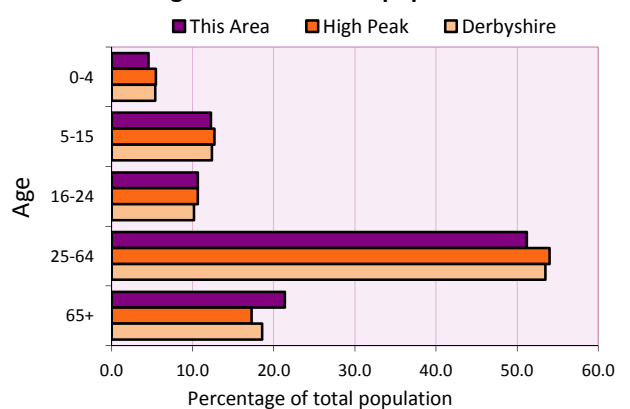
Area (hectares)	Persons per hectare		
	This Area	High Peak	Derbyshire
304	13.7	1.7	3.0

Table KS101EW

Age structure	Number of people	% of total population		
		This Area	High Peak	Derbyshire
0-4 years	189	4.5	5.5	5.4
5-15 years	510	12.3	12.7	12.4
16-24 years	443	10.6	10.6	10.2
25-64 years	2,130	51.2	54.0	53.5
65 and over	888	21.3	17.2	18.6

Table KS102EW

Age structure of the population



Households

Total households

Number	Average household size (persons)		
	This Area	High Peak	Derbyshire
1,811	2.30	2.33	2.31

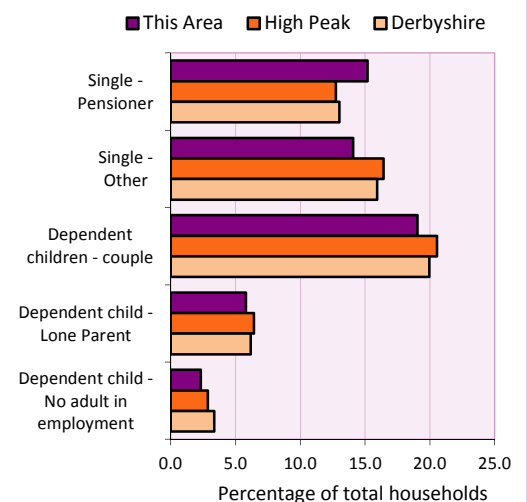
Table KS101EW and KS403EW

Household types

Number	% of total households			
	This Area	High Peak	Derbyshire	
Single person households	530	29.3	29.2	28.9
Pensioner	275	15.2	12.7	13.0
Other	255	14.1	16.4	15.9
Households with dependent children				
All	468	25.8	28.4	27.6
Couple	345	19.1	20.5	19.9
Lone parent	105	5.8	6.4	6.2
No adult in employment	42	2.3	2.9	3.4
One person with a long-term health problem - or disability	75	4.1	4.4	4.5

Table KS105EW and KS106EW

Household types



Car/van ownership

Number of households	% of total households			
	This Area	High Peak	Derbyshire	
No car or van	287	15.8	19.6	20.1

Table KS404EW

2011 Census: Summary Profile

Chapel West

Area type and code
Ward (E05003394)

Accommodation

Tenure	Number of households	% of total households		
		This Area	High Peak	Derbyshire
Owner-occupied	1,454	80.3	72.6	71.4
Rented from council/housing association	134	7.4	12.7	15.3
Private/other rented	202	11.2	13.4	12.0
Living rent free	21	1.2	1.2	1.3

Table KS402EW

Amenities	Number of households	% of total households		
		This Area	High Peak	Derbyshire
Overcrowded households	56	3.1	4.8	3.7
Households without central heating	33	1.8	2.3	2.0

Table KS403EW

Total household spaces	1,889
-------------------------------	--------------

Table KS401EW

Type of accommodation	Number of household spaces	% of total household spaces		
		This Area	High Peak	Derbyshire
Detached	533	28.2	23.5	31.8
Semi-detached	857	45.4	29.2	38.7
Terraced	346	18.3	34.4	20.6
Flat/maisonette/apartment	153	8.1	12.6	8.6
Other	0	0.0	0.2	0.3

Table KS401EW

Marital status

Marital status	Number of people	% of people aged 16+		
		This Area	High Peak	Derbyshire
Single	929	26.8	30.9	29.3
Married	1,791	51.7	49.1	50.5
Same-sex civil partnership	9	0.3	0.2	0.2
Separated	74	2.1	2.4	2.4
Divorced	349	10.1	9.9	9.9
Widowed / surviving partner	309	8.9	7.4	7.7

Table KS103EW

Health

Health	Number of people	% of total population		
		This Area	High Peak	Derbyshire
People whose day-to-day activities are limited	870	20.9	18.1	20.4
People with 'bad' general health	221	5.3	5.2	6.2
People providing unpaid care	523	12.6	11.3	12.1

Table KS301EW

2011 Census: Summary Profile

Chapel West

Area type and code
Ward (E05003394)

Ethnicity

Ethnic group	Number of people	% of total population		
		This Area	High Peak	Derbyshire
White British	4,040	97.1	95.9	95.8
Black and Minority Ethnic (BME)	120	2.9	4.1	4.2
White Other	76	1.8	2.0	1.7
Mixed/multiple ethnic groups	24	0.6	1.0	0.9
Asian/Asian British	14	0.3	0.8	1.1
Black/African/Caribbean/Black British	2	0.0	0.2	0.4
Other ethnic group	4	0.1	0.1	0.1

Table KS201EW

Religion

Religion	Number of people	% of total population		
		This Area	High Peak	Derbyshire
Christian	2,759	66.3	64.1	63.6
Buddhist	5	0.1	0.3	0.2
Hindu	0	0.0	0.1	0.2
Jewish	2	0.0	0.0	0.0
Muslim	4	0.1	0.2	0.3
Sikh	0	0.0	0.0	0.3
Other religions	15	0.4	0.4	0.4
No religion	1,064	25.6	27.6	28.0
Not stated	311	7.5	7.2	7.0

Table KS209EW

Migration

Country of birth by year of arrival in the UK	Number of people	% of total residents		
		This Area	High Peak	Derbyshire
From within the UK total	4,026	96.8	96.4	96.7
From outside the UK total	134	3.2	3.6	3.3
<i>of which</i>				
- Ireland	21	0.5	0.5	0.3
- Other EU country	22	0.5	0.8	0.9
- European (Non-EU country)	30	0.7	0.2	0.1
- Other parts of the world	61	1.5	1.7	1.6

Table LC2804EW

Length of residence in the UK	Number of people	% of total residents		
		This Area	High Peak	Derbyshire
Less than 2 years	10	0.2	0.2	0.3
2 years or more but less than 5 years	18	0.4	0.5	0.5
5 years or more but less than 10 years	19	0.5	0.6	0.6
10 years or more	87	2.1	2.2	2.0
Born in the UK	4,026	96.8	96.4	96.7

Table QS803EW

2011 Census: Summary Profile

Chapel West

Area type and code
Ward (E05003394)

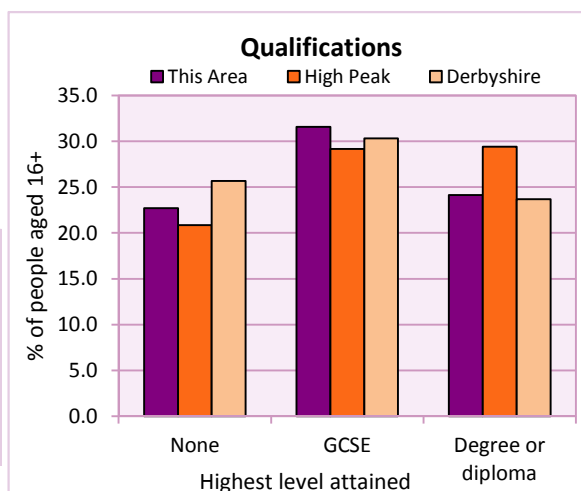
Education

Full-time students	Number	% of population in age group		
		This Area	High Peak	Derbyshire
aged 16-17	103	91.2	88.0	86.3
aged 18-74	80	2.7	3.9	2.9

Table KS501EW

Qualifications	People (aged 16+)	% of all people aged 16+		
		This Area	High Peak	Derbyshire
No qualifications	786	22.7	20.9	25.7
Highest level attained				
GCSE	1,093	31.6	29.2	30.3
Degree or diploma	835	24.1	29.4	23.7

Table KS501EW



Workforce

Economic activity	People aged 16-74								
	This Area			High Peak			Derbyshire		
	Males	Females	All	Males	Females	All	Males	Females	All
Economically active									
- number	1,167	1,044	2,211	25,645	22,915	48,560	211,349	185,704	397,053
- rate (%)	77.0	68.5	72.7	76.3	67.8	72.1	74.8	65.1	69.9
All unemployed									
- number	59	26	85	1,563	1,013	2,576	13,541	8,665	22,206
- rate (%)	3.9	1.7	2.8	4.7	3.0	3.8	4.8	3.0	3.9
Economically inactive									
- number	349	481	830	7,965	10,864	18,829	71,240	99,505	170,745
- rate (%)	23.0	31.5	27.3	23.7	32.2	27.9	25.2	34.9	30.1

Table KS601EW KS602EW and KS603EW

Hours worked	% of people aged 16-74 in employment					
	Full time (more than 30 hrs)			Part time (30 hrs or less)		
	This Area	High Peak	Derbyshire	This Area	High Peak	Derbyshire
All	66.8	70.0	70.3	33.2	30.0	29.7
Males	84.4	85.6	86.5	15.6	14.4	13.5
Females	47.7	52.8	52.1	52.3	47.2	47.9

Table KS604EW

People travelling to work	This Area	High Peak	Derbyshire
- works mainly at or from home %	11.1	12.2	10.5
- by car or van %	61.8	59.4	65.6
- by public transport or taxi %	5.4	8.4	6.6
- by all other methods of travel %	21.7	20.0	17.4
Average distance travelled km	13.3	15.7	15.2

Table LC7101EW and QS702EW

2011 Census: Summary Profile

Chapel West

Area type and code
Ward (E05003394)

Workforce (continued)

Industry (people aged 16-74 in employment)	Number of workers	% of people aged 16-74 in employment		
		This Area	High Peak	Derbyshire
Agriculture, forestry and fishing	16	0.8	1.0	1.0
Mining, quarrying and utilities	41	1.9	2.0	1.9
Manufacturing	374	17.7	13.3	14.9
Construction	169	8.0	7.6	8.5
Wholesale and retail	315	14.9	14.4	16.6
Business services	537	25.4	27.4	25.1
Public services	571	27.0	29.6	27.5
Other services	95	4.5	4.7	4.5

Chart category

Other

Other

Manufacturing

Other

Services

Services

Services

Services

Table KS605EW

Occupation (people aged 16-74 in employment)	Number of workers	% of people aged 16-74 in employment		
		This Area	High Peak	Derbyshire
Managers, directors & senior officials	208	9.8	11.3	10.9
Professional	321	15.2	17.8	15.1
Associate professional & technical	227	10.7	11.7	11.0
Administrative & secretarial	232	11.0	10.1	10.9
Skilled trades	270	12.7	12.6	13.3
Caring, leisure & other services	235	11.1	10.0	9.6
Sales & customer service	151	7.1	7.0	7.9
Process, plant & machine operatives	232	11.0	9.0	9.6
Elementary occupations	242	11.4	10.4	11.7

Chart category

Managerial & professional

Managerial & professional

Managerial & professional

Other non-manual

Manual

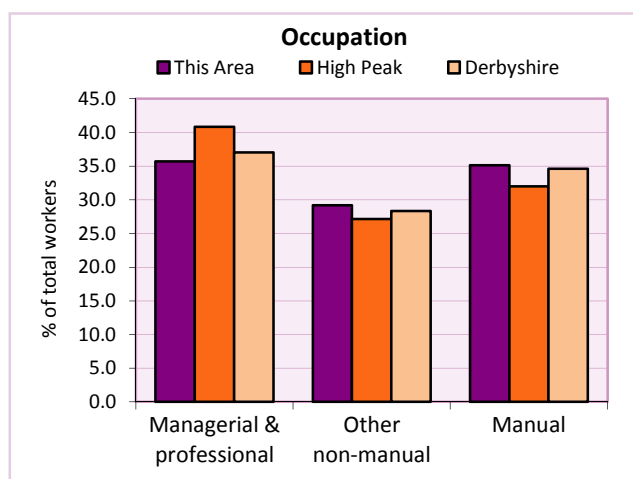
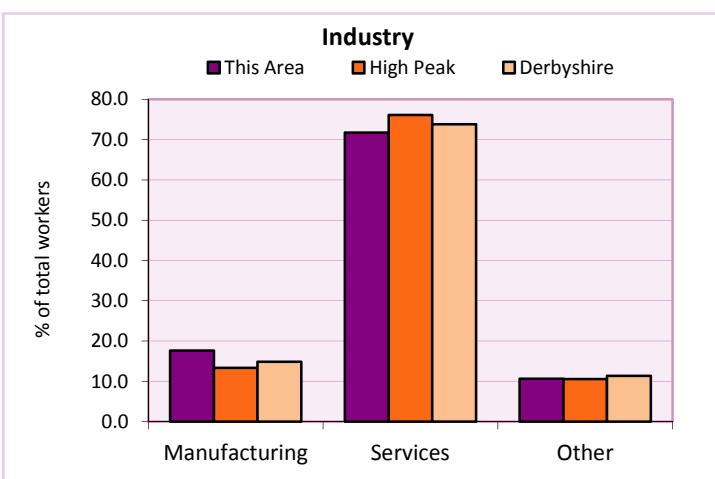
Other non-manual

Other non-manual

Manual

Manual

Table KS608EW



For an **explanation** of the various terms used in these tables, please see the accompanying **Glossary**.

Extension profiles covering the following topics in more detail will also be available:

Population, Economic Activity, Equalities, Health, Households, and Housing.

Profiles in Adobe Acrobat (pdf) format can be downloaded from the Derbyshire Observatory web site, which also provides interactive maps and charts - <http://observatory.derbyshire.gov.uk>

Please note that figures vary across the Census Profiles as different denominators are used. 2011 Census Table reference numbers are provided beneath each individual table in the Census Profiles should you require further information.

Version: 6.31