

Corbar

Area type and code
Ward (E05003395)

Population

Population change since 2001

Change in numbers	% change		
	This Area	High Peak	Derbyshire
+96	+2.7	+1.6	+4.8

2011 Census Table KS101EW and 2001 Census Table S001

Residents

	Number
Total resident population	3,685
- in households	3,523
- in communal establishments	162

Table KS101EW

Density of population

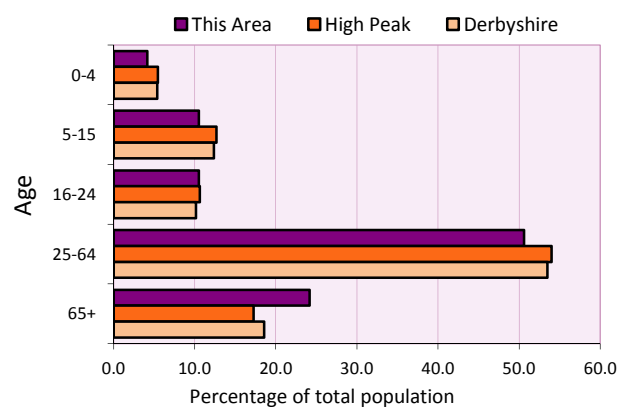
Area (hectares)	Persons per hectare		
	This Area	High Peak	Derbyshire
880	4.2	1.7	3.0

Table KS101EW

Age structure	Number of people	% of total population		
		This Area	High Peak	Derbyshire
0-4 years	154	4.2	5.5	5.4
5-15 years	388	10.5	12.7	12.4
16-24 years	388	10.5	10.6	10.2
25-64 years	1,865	50.6	54.0	53.5
65 and over	890	24.2	17.2	18.6

Table KS102EW

Age structure of the population



Households

Total households

Number	Average household size (persons)		
	This Area	High Peak	Derbyshire
1,627	2.26	2.33	2.31

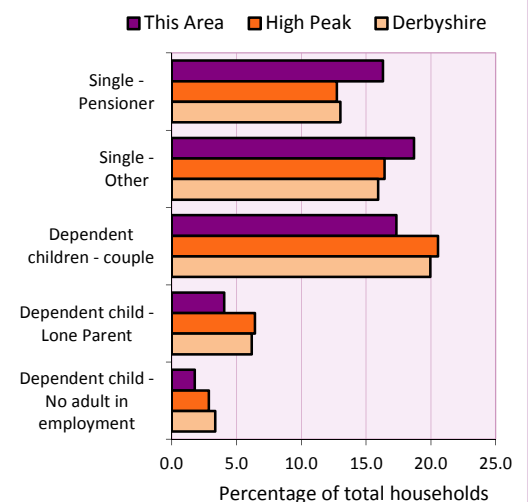
Table KS101EW and KS403EW

Household types

Household types	Number	% of total households		
		This Area	High Peak	Derbyshire
Single person households	569	35.0	29.2	28.9
Pensioner	265	16.3	12.7	13.0
Other	304	18.7	16.4	15.9
Households with dependent children				
All	369	22.7	28.4	27.6
Couple	282	17.3	20.5	19.9
Lone parent	66	4.1	6.4	6.2
No adult in employment	29	1.8	2.9	3.4
One person with a long-term health problem - or disability	63	3.9	4.4	4.5

Table KS105EW and KS106EW

Household types



Car/van ownership

Number of households	% of total households			
	This Area	High Peak	Derbyshire	
No car or van	333	20.5	19.6	20.1

Table KS404EW

2011 Census: Summary Profile

Corbar

Area type and code
Ward (E05003395)

Accommodation

Tenure	Number of households	% of total households		
		This Area	High Peak	Derbyshire
Owner-occupied	1,144	70.3	72.6	71.4
Rented from council/housing association	170	10.4	12.7	15.3
Private/other rented	302	18.6	13.4	12.0
Living rent free	11	0.7	1.2	1.3

Table KS402EW

Amenities	Number of households	% of total households		
		This Area	High Peak	Derbyshire
Overcrowded households	85	5.2	4.8	3.7
Households without central heating	23	1.4	2.3	2.0

Table KS403EW

Total household spaces	1,750
-------------------------------	--------------

Table KS401EW

Type of accommodation	Number of household spaces	% of total household spaces		
		This Area	High Peak	Derbyshire
Detached	484	27.7	23.5	31.8
Semi-detached	382	21.8	29.2	38.7
Terraced	187	10.7	34.4	20.6
Flat/maisonette/apartment	650	37.1	12.6	8.6
Other	47	2.7	0.2	0.3

Table KS401EW

Marital status

Marital status	Number of people	% of people aged 16+		
		This Area	High Peak	Derbyshire
Single	937	29.8	30.9	29.3
Married	1,486	47.3	49.1	50.5
Same-sex civil partnership	2	0.1	0.2	0.2
Separated	66	2.1	2.4	2.4
Divorced	315	10.0	9.9	9.9
Widowed / surviving partner	337	10.7	7.4	7.7

Table KS103EW

Health

Health	Number of people	% of total population		
		This Area	High Peak	Derbyshire
People whose day-to-day activities are limited	854	23.2	18.1	20.4
People with 'bad' general health	228	6.2	5.2	6.2
People providing unpaid care	406	11.0	11.3	12.1

Table KS301EW

2011 Census: Summary Profile

Corbar

Area type and code
Ward (E05003395)

Ethnicity

Ethnic group	Number of people	% of total population		
		This Area	High Peak	Derbyshire
White British	3,478	94.4	95.9	95.8
Black and Minority Ethnic (BME)	207	5.6	4.1	4.2
White Other	85	2.3	2.0	1.7
Mixed/multiple ethnic groups	40	1.1	1.0	0.9
Asian/Asian British	51	1.4	0.8	1.1
Black/African/Caribbean/Black British	22	0.6	0.2	0.4
Other ethnic group	9	0.2	0.1	0.1

Table KS201EW

Religion

Religion	Number of people	% of total population		
		This Area	High Peak	Derbyshire
Christian	2,412	65.5	64.1	63.6
Buddhist	21	0.6	0.3	0.2
Hindu	3	0.1	0.1	0.2
Jewish	2	0.1	0.0	0.0
Muslim	14	0.4	0.2	0.3
Sikh	3	0.1	0.0	0.3
Other religions	13	0.4	0.4	0.4
No religion	927	25.2	27.6	28.0
Not stated	290	7.9	7.2	7.0

Table KS209EW

Migration

Country of birth by year of arrival in the UK	Number of people	% of total residents		
		This Area	High Peak	Derbyshire
From within the UK total	3,494	94.8	96.4	96.7
From outside the UK total	191	5.2	3.6	3.3
<i>of which</i>				
- Ireland	25	0.7	0.5	0.3
- Other EU country	32	0.9	0.8	0.9
- European (Non-EU country)	30	0.8	0.2	0.1
- Other parts of the world	104	2.8	1.7	1.6

Table LC2804EW

Length of residence in the UK	Number of people	% of total residents		
		This Area	High Peak	Derbyshire
Less than 2 years	8	0.2	0.2	0.3
2 years or more but less than 5 years	42	1.1	0.5	0.5
5 years or more but less than 10 years	28	0.8	0.6	0.6
10 years or more	113	3.1	2.2	2.0
Born in the UK	3,494	94.8	96.4	96.7

Table QS803EW

2011 Census: Summary Profile

Corbar

Area type and code
Ward (E05003395)

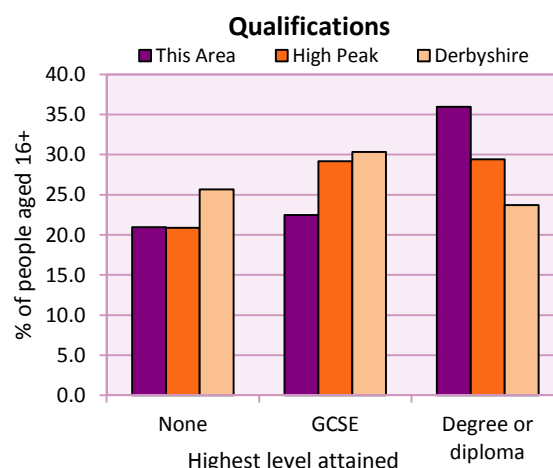
Education

Full-time students	Number	% of population in age group		
		This Area	High Peak	Derbyshire
aged 16-17	72	88.9	88.0	86.3
aged 18-74	150	5.8	3.9	2.9

Table KS501EW

Qualifications	People (aged 16+)	% of all people aged 16+		
		This Area	High Peak	Derbyshire
No qualifications	659	21.0	20.9	25.7
Highest level attained				
GCSE	706	22.5	29.2	30.3
Degree or diploma	1,130	36.0	29.4	23.7

Table KS501EW



Workforce

Economic activity	People aged 16-74								
	This Area			High Peak			Derbyshire		
	Males	Females	All	Males	Females	All	Males	Females	All
Economically active									
- number	969	849	1,818	25,645	22,915	48,560	211,349	185,704	397,053
- rate (%)	72.0	65.0	68.6	76.3	67.8	72.1	74.8	65.1	69.9
All unemployed									
- number	48	29	77	1,563	1,013	2,576	13,541	8,665	22,206
- rate (%)	3.6	2.2	2.9	4.7	3.0	3.8	4.8	3.0	3.9
Economically inactive									
- number	376	457	833	7,965	10,864	18,829	71,240	99,505	170,745
- rate (%)	28.0	35.0	31.4	23.7	32.2	27.9	25.2	34.9	30.1

Table KS601EW KS602EW and KS603EW

Hours worked	% of people aged 16-74 in employment					
	Full time (more than 30 hrs)			Part time (30 hrs or less)		
	This Area	High Peak	Derbyshire	This Area	High Peak	Derbyshire
All	67.8	70.0	70.3	32.2	30.0	29.7
Males	82.9	85.6	86.5	17.1	14.4	13.5
Females	50.9	52.8	52.1	49.1	47.2	47.9

Table KS604EW

People travelling to work	This Area	High Peak	Derbyshire
- works mainly at or from home %	15.1	12.2	10.5
- by car or van %	53.3	59.4	65.6
- by public transport or taxi %	4.8	8.4	6.6
- by all other methods of travel %	26.8	20.0	17.4
Average distance travelled km	15.8	15.7	15.2

Table LC7101EW and QS702EW

2011 Census: Summary Profile

Corbar

Area type and code
Ward (E05003395)

Workforce (continued)

Industry (people aged 16-74 in employment)	Number of workers	% of people aged 16-74 in employment		
		This Area	High Peak	Derbyshire
Agriculture, forestry and fishing	8	0.5	1.0	1.0
Mining, quarrying and utilities	42	2.4	2.0	1.9
Manufacturing	180	10.5	13.3	14.9
Construction	101	5.9	7.6	8.5
Wholesale and retail	225	13.1	14.4	16.6
Business services	487	28.3	27.4	25.1
Public services	588	34.2	29.6	27.5
Other services	87	5.1	4.7	4.5

Chart category

Other

Other

Manufacturing

Other

Services

Services

Services

Services

Table KS605EW

Occupation (people aged 16-74 in employment)	Number of workers	% of people aged 16-74 in employment		
		This Area	High Peak	Derbyshire
Managers, directors & senior officials	248	14.4	11.3	10.9
Professional	365	21.2	17.8	15.1
Associate professional & technical	193	11.2	11.7	11.0
Administrative & secretarial	149	8.7	10.1	10.9
Skilled trades	171	10.0	12.6	13.3
Caring, leisure & other services	180	10.5	10.0	9.6
Sales & customer service	117	6.8	7.0	7.9
Process, plant & machine operatives	128	7.5	9.0	9.6
Elementary occupations	167	9.7	10.4	11.7

Chart category

Managerial & professional

Managerial & professional

Managerial & professional

Other non-manual

Manual

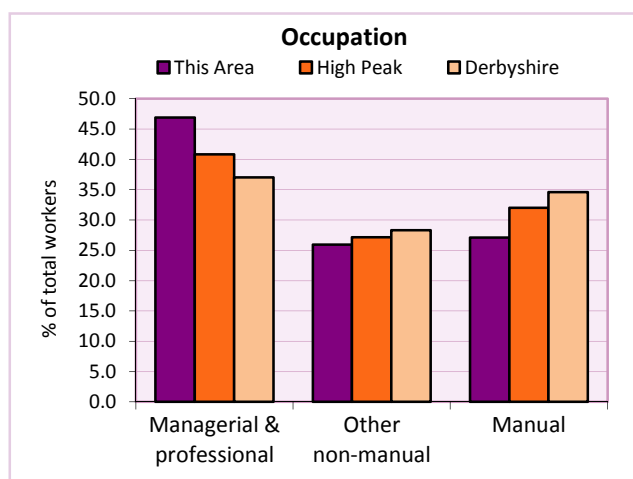
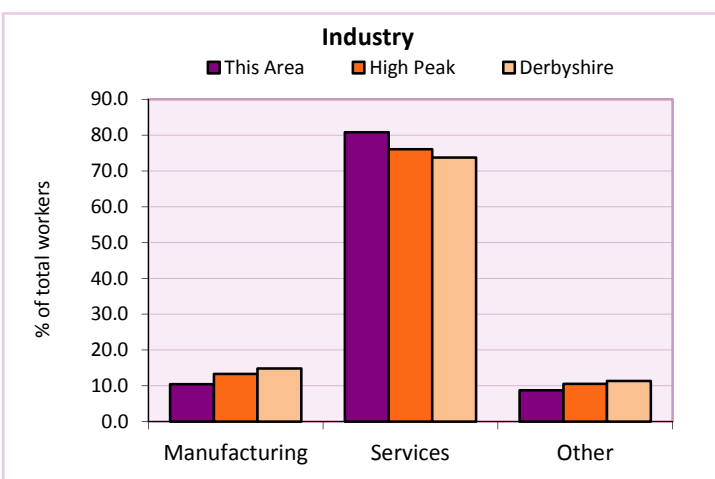
Other non-manual

Other non-manual

Manual

Manual

Table KS608EW



For an **explanation** of the various terms used in these tables, please see the accompanying **Glossary**.

Extension profiles covering the following topics in more detail will also be available:

Population, Economic Activity, Equalities, Health, Households, and Housing.

Profiles in Adobe Acrobat (pdf) format can be downloaded from the Derbyshire Observatory web site, which also provides interactive maps and charts - <http://observatory.derbyshire.gov.uk>

Please note that figures vary across the Census Profiles as different denominators are used. 2011 Census Table reference numbers are provided beneath each individual table in the Census Profiles should you require further information.

Version: 6.31