

Cote Heath

Area type and code
Ward (E05003396)

Population

Population change since 2001

Change in numbers	% change		
	This Area	High Peak	Derbyshire
-56	-1.4	+1.6	+4.8

2011 Census Table KS101EW and 2001 Census Table S001

Residents

	Number
Total resident population	3,966
- in households	3,966
- in communal establishments	0

Table KS101EW

Density of population

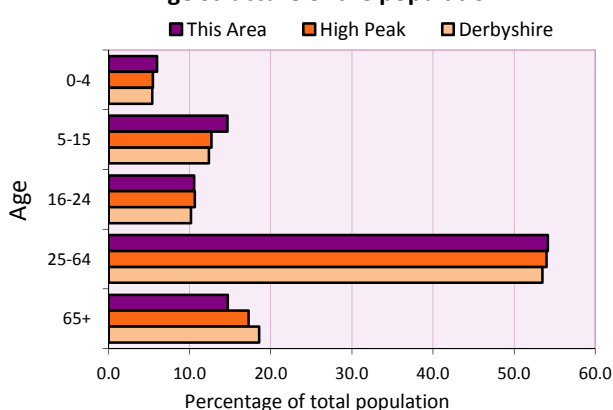
Area (hectares)	Persons per hectare		
	This Area	High Peak	Derbyshire
895	4.4	1.7	3.0

Table KS101EW

Age structure	Number of people	% of total population		
		This Area	High Peak	Derbyshire
0-4 years	237	6.0	5.5	5.4
5-15 years	581	14.6	12.7	12.4
16-24 years	418	10.5	10.6	10.2
25-64 years	2,148	54.2	54.0	53.5
65 and over	582	14.7	17.2	18.6

Table KS102EW

Age structure of the population



Households

Total households

Number	Average household size (persons)		
	This Area	High Peak	Derbyshire
1,650	2.40	2.33	2.31

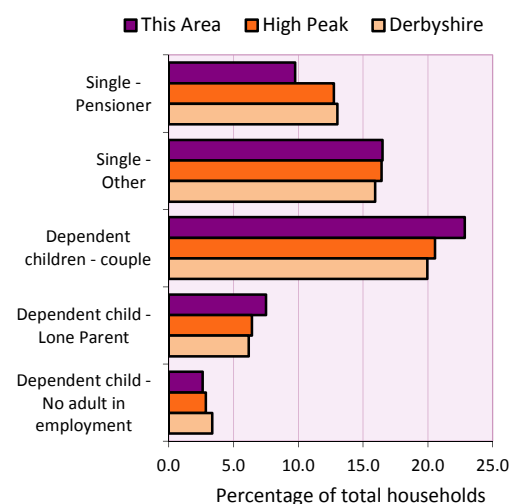
Table KS101EW and KS403EW

Household types

Number	% of total households			
	This Area	High Peak	Derbyshire	
Single person households	433	26.2	29.2	28.9
Pensioner	161	9.8	12.7	13.0
Other	272	16.5	16.4	15.9
Households with dependent children				
All	523	31.7	28.4	27.6
Couple	377	22.8	20.5	19.9
Lone parent	124	7.5	6.4	6.2
No adult in employment	43	2.6	2.9	3.4
One person with a long-term health problem - or disability	83	5.0	4.4	4.5

Table KS105EW and KS106EW

Household types



Car/van ownership

Number of households	% of total households			
	This Area	High Peak	Derbyshire	
No car or van	297	18.0	19.6	20.1

Table KS404EW

2011 Census: Summary Profile

Cote Heath

Area type and code
Ward (E05003396)

Accommodation

Tenure	Number of households	% of total households		
		This Area	High Peak	Derbyshire
Owner-occupied	1,210	73.3	72.6	71.4
Rented from council/housing association	244	14.8	12.7	15.3
Private/other rented	181	11.0	13.4	12.0
Living rent free	15	0.9	1.2	1.3

Table KS402EW

Amenities	Number of households	% of total households		
		This Area	High Peak	Derbyshire
Overcrowded households	73	4.4	4.8	3.7
Households without central heating	22	1.3	2.3	2.0

Table KS403EW

Total household spaces	1,705
-------------------------------	--------------

Table KS401EW

Type of accommodation	Number of household spaces	% of total household spaces		
		This Area	High Peak	Derbyshire
Detached	261	15.3	23.5	31.8
Semi-detached	983	57.7	29.2	38.7
Terraced	289	17.0	34.4	20.6
Flat/maisonette/apartment	157	9.2	12.6	8.6
Other	15	0.9	0.2	0.3

Table KS401EW

Marital status

Marital status	Number of people	% of people aged 16+		
		This Area	High Peak	Derbyshire
Single	941	29.9	30.9	29.3
Married	1,590	50.5	49.1	50.5
Same-sex civil partnership	9	0.3	0.2	0.2
Separated	81	2.6	2.4	2.4
Divorced	337	10.7	9.9	9.9
Widowed / surviving partner	190	6.0	7.4	7.7

Table KS103EW

Health

Health	Number of people	% of total population		
		This Area	High Peak	Derbyshire
People whose day-to-day activities are limited	671	16.9	18.1	20.4
People with 'bad' general health	197	5.0	5.2	6.2
People providing unpaid care	447	11.3	11.3	12.1

Table KS301EW

2011 Census: Summary Profile

Cote Heath

Area type and code
Ward (E05003396)

Ethnicity

Ethnic group	Number of people	% of total population		
		This Area	High Peak	Derbyshire
White British	3,884	97.9	95.9	95.8
Black and Minority Ethnic (BME)	82	2.1	4.1	4.2
White Other	44	1.1	2.0	1.7
Mixed/multiple ethnic groups	20	0.5	1.0	0.9
Asian/Asian British	13	0.3	0.8	1.1
Black/African/Caribbean/Black British	4	0.1	0.2	0.4
Other ethnic group	1	0.0	0.1	0.1

Table KS201EW

Religion

Religion	Number of people	% of total population		
		This Area	High Peak	Derbyshire
Christian	2,678	67.5	64.1	63.6
Buddhist	8	0.2	0.3	0.2
Hindu	1	0.0	0.1	0.2
Jewish	0	0.0	0.0	0.0
Muslim	1	0.0	0.2	0.3
Sikh	0	0.0	0.0	0.3
Other religions	11	0.3	0.4	0.4
No religion	995	25.1	27.6	28.0
Not stated	272	6.9	7.2	7.0

Table KS209EW

Migration

Country of birth by year of arrival in the UK	Number of people	% of total residents		
		This Area	High Peak	Derbyshire
From within the UK total	3,890	98.1	96.4	96.7
From outside the UK total	76	1.9	3.6	3.3
<i>of which</i>				
- Ireland	20	0.5	0.5	0.3
- Other EU country	9	0.2	0.8	0.9
- European (Non-EU country)	25	0.6	0.2	0.1
- Other parts of the world	22	0.6	1.7	1.6

Table LC2804EW

Length of residence in the UK	Number of people	% of total residents		
		This Area	High Peak	Derbyshire
Less than 2 years	4	0.1	0.2	0.3
2 years or more but less than 5 years	9	0.2	0.5	0.5
5 years or more but less than 10 years	12	0.3	0.6	0.6
10 years or more	51	1.3	2.2	2.0
Born in the UK	3,890	98.1	96.4	96.7

Table QS803EW

2011 Census: Summary Profile

Cote Heath

Area type and code
Ward (E05003396)

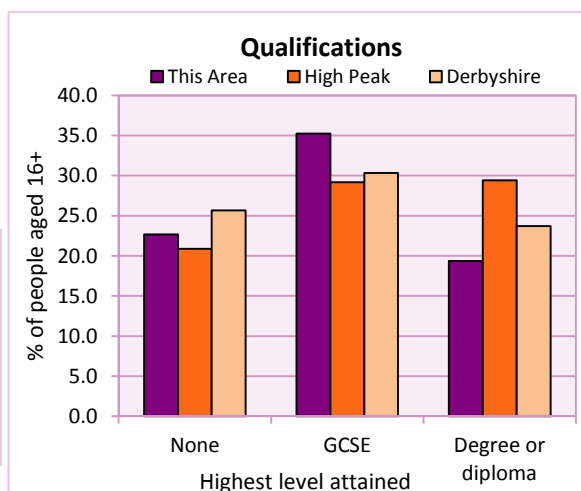
Education

Full-time students	Number	% of population in age group		
		This Area	High Peak	Derbyshire
aged 16-17	78	78.0	88.0	86.3
aged 18-74	83	3.0	3.9	2.9

Table KS501EW

Qualifications	People (aged 16+)	% of all people aged 16+		
		This Area	High Peak	Derbyshire
No qualifications	713	22.6	20.9	25.7
Highest level attained				
GCSE	1,109	35.2	29.2	30.3
Degree or diploma	609	19.3	29.4	23.7

Table KS501EW



Workforce

Economic activity	People aged 16-74								
	This Area			High Peak			Derbyshire		
	Males	Females	All	Males	Females	All	Males	Females	All
Economically active									
- number	1,137	1,027	2,164	25,645	22,915	48,560	211,349	185,704	397,053
- rate (%)	78.7	70.7	74.7	76.3	67.8	72.1	74.8	65.1	69.9
All unemployed									
- number	53	37	90	1,563	1,013	2,576	13,541	8,665	22,206
- rate (%)	3.7	2.5	3.1	4.7	3.0	3.8	4.8	3.0	3.9
Economically inactive									
- number	307	426	733	7,965	10,864	18,829	71,240	99,505	170,745
- rate (%)	21.3	29.3	25.3	23.7	32.2	27.9	25.2	34.9	30.1

Table KS601EW KS602EW and KS603EW

Hours worked	% of people aged 16-74 in employment					
	Full time (more than 30 hrs)			Part time (30 hrs or less)		
	This Area	High Peak	Derbyshire	This Area	High Peak	Derbyshire
All	69.5	70.0	70.3	30.5	30.0	29.7
Males	89.1	85.6	86.5	10.9	14.4	13.5
Females	48.0	52.8	52.1	52.0	47.2	47.9

Table KS604EW

People travelling to work	This Area	High Peak	Derbyshire
- works mainly at or from home %	8.0	12.2	10.5
- by car or van %	65.0	59.4	65.6
- by public transport or taxi %	3.5	8.4	6.6
- by all other methods of travel %	23.5	20.0	17.4
Average distance travelled km	11.9	15.7	15.2

Table LC7101EW and QS702EW

2011 Census: Summary Profile

Cote Heath

Area type and code
Ward (E05003396)

Workforce (continued)

Industry (people aged 16-74 in employment)	Number of workers	% of people aged 16-74 in employment		
		This Area	High Peak	Derbyshire
Agriculture, forestry and fishing	14	0.7	1.0	1.0
Mining, quarrying and utilities	122	5.9	2.0	1.9
Manufacturing	306	14.8	13.3	14.9
Construction	154	7.5	7.6	8.5
Wholesale and retail	329	16.0	14.4	16.6
Business services	523	25.4	27.4	25.1
Public services	532	25.8	29.6	27.5
Other services	81	3.9	4.7	4.5

Chart category

Other

Other

Manufacturing

Other

Services

Services

Services

Services

Table KS605EW

Occupation (people aged 16-74 in employment)	Number of workers	% of people aged 16-74 in employment		
		This Area	High Peak	Derbyshire
Managers, directors & senior officials	158	7.7	11.3	10.9
Professional	220	10.7	17.8	15.1
Associate professional & technical	182	8.8	11.7	11.0
Administrative & secretarial	211	10.2	10.1	10.9
Skilled trades	317	15.4	12.6	13.3
Caring, leisure & other services	233	11.3	10.0	9.6
Sales & customer service	162	7.9	7.0	7.9
Process, plant & machine operatives	302	14.7	9.0	9.6
Elementary occupations	276	13.4	10.4	11.7

Chart category

Managerial & professional

Managerial & professional

Managerial & professional

Other non-manual

Manual

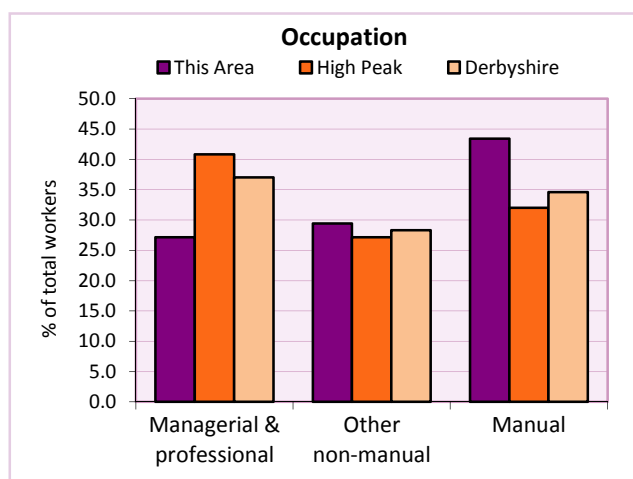
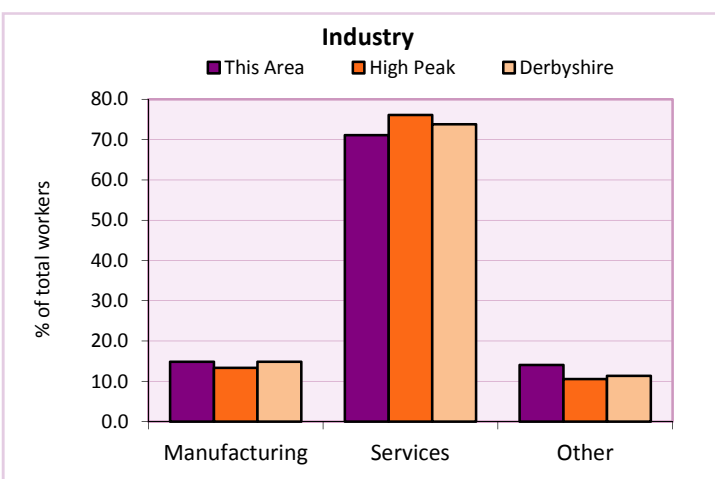
Other non-manual

Other non-manual

Manual

Manual

Table KS608EW



For an **explanation** of the various terms used in these tables, please see the accompanying **Glossary**.

Extension profiles covering the following topics in more detail will also be available:

Population, Economic Activity, Equalities, Health, Households, and Housing.

Profiles in Adobe Acrobat (pdf) format can be downloaded from the Derbyshire Observatory web site, which also provides interactive maps and charts - <http://observatory.derbyshire.gov.uk>

Please note that figures vary across the Census Profiles as different denominators are used. 2011 Census Table reference numbers are provided beneath each individual table in the Census Profiles should you require further information.

Version: 6.31