

## Gamesley

Area type and code  
Ward (E05003398)

### Population

#### Population change since 2001

Change in numbers	% change		
	This Area	High Peak	Derbyshire
-49	-1.9	+1.6	+4.8

2011 Census Table KS101EW and 2001 Census Table S001

#### Residents

	Number
Total resident population	2,531
- in households	2,531
- in communal establishments	0

Table KS101EW

#### Density of population

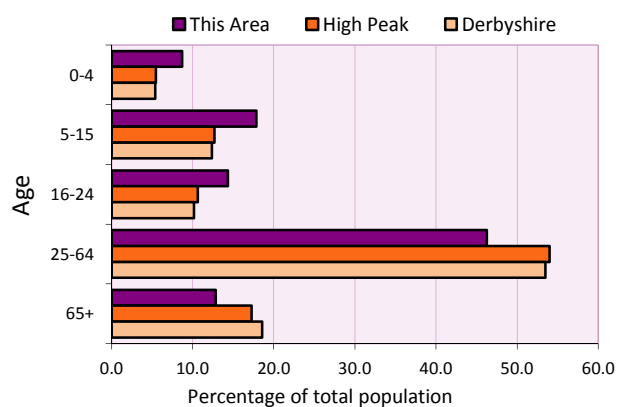
Area (hectares)	Persons per hectare		
	This Area	High Peak	Derbyshire
85	29.8	1.7	3.0

Table KS101EW

Age structure	Number of people	% of total population		
		This Area	High Peak	Derbyshire
0-4 years	220	8.7	5.5	5.4
5-15 years	452	17.9	12.7	12.4
16-24 years	363	14.3	10.6	10.2
25-64 years	1,171	46.3	54.0	53.5
65 and over	325	12.8	17.2	18.6

Table KS102EW

#### Age structure of the population



### Households

#### Total households

Number	Average household size (persons)		
	This Area	High Peak	Derbyshire
1,046	2.42	2.33	2.31

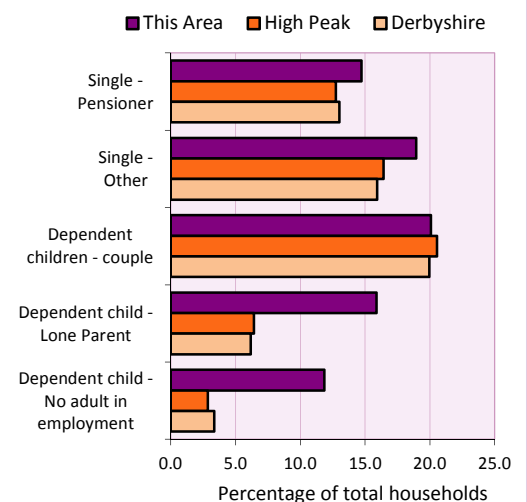
Table KS101EW and KS403EW

#### Household types

Number	% of total households			
	This Area	High Peak	Derbyshire	
Single person households	352	33.7	29.2	28.9
Pensioner	154	14.7	12.7	13.0
Other	198	18.9	16.4	15.9
Households with dependent children				
All	403	38.5	28.4	27.6
Couple	210	20.1	20.5	19.9
Lone parent	166	15.9	6.4	6.2
No adult in employment	124	11.9	2.9	3.4
One person with a long-term health problem - or disability	97	9.3	4.4	4.5

Table KS105EW and KS106EW

#### Household types



#### Car/van ownership

Number of households	% of total households			
	This Area	High Peak	Derbyshire	
No car or van	476	45.5	19.6	20.1

Table KS404EW

# 2011 Census: Summary Profile

Gamesley

Area type and code  
Ward (E05003398)

## Accommodation

Tenure	Number of households	% of total households		
		This Area	High Peak	Derbyshire
Owner-occupied	320	30.6	72.6	71.4
Rented from council/housing association	659	63.0	12.7	15.3
Private/other rented	45	4.3	13.4	12.0
Living rent free	22	2.1	1.2	1.3

Table KS402EW

Amenities	Number of households	% of total households		
		This Area	High Peak	Derbyshire
Overcrowded households	101	9.7	4.8	3.7
Households without central heating	16	1.5	2.3	2.0

Table KS403EW

<b>Total household spaces</b>	<b>1,056</b>
-------------------------------	--------------

Table KS401EW

Type of accommodation	Number of household spaces	% of total household spaces		
		This Area	High Peak	Derbyshire
Detached	40	3.8	23.5	31.8
Semi-detached	142	13.4	29.2	38.7
Terraced	821	77.7	34.4	20.6
Flat/maisonette/apartment	53	5.0	12.6	8.6
Other	0	0.0	0.2	0.3

Table KS401EW

## Marital status

Marital status	Number of people	% of people aged 16+		
		This Area	High Peak	Derbyshire
Single	823	44.3	30.9	29.3
Married	576	31.0	49.1	50.5
Same-sex civil partnership	1	0.1	0.2	0.2
Separated	74	4.0	2.4	2.4
Divorced	239	12.9	9.9	9.9
Widowed / surviving partner	146	7.9	7.4	7.7

Table KS103EW

## Health

Health	Number of people	% of total population		
		This Area	High Peak	Derbyshire
People whose day-to-day activities are limited	615	24.3	18.1	20.4
People with 'bad' general health	240	9.5	5.2	6.2
People providing unpaid care	244	9.6	11.3	12.1

Table KS301EW

# 2011 Census: Summary Profile

Gamesley

Area type and code  
Ward (E05003398)

## Ethnicity

Ethnic group	Number of people	% of total population		
		This Area	High Peak	Derbyshire
White British	2,421	95.7	95.9	95.8
Black and Minority Ethnic (BME)	110	4.3	4.1	4.2
White Other	34	1.3	2.0	1.7
Mixed/multiple ethnic groups	34	1.3	1.0	0.9
Asian/Asian British	26	1.0	0.8	1.1
Black/African/Caribbean/Black British	16	0.6	0.2	0.4
Other ethnic group	0	0.0	0.1	0.1

Table KS201EW

## Religion

Religion	Number of people	% of total population		
		This Area	High Peak	Derbyshire
Christian	1,524	60.2	64.1	63.6
Buddhist	1	0.0	0.3	0.2
Hindu	1	0.0	0.1	0.2
Jewish	1	0.0	0.0	0.0
Muslim	2	0.1	0.2	0.3
Sikh	5	0.2	0.0	0.3
Other religions	2	0.1	0.4	0.4
No religion	804	31.8	27.6	28.0
Not stated	191	7.5	7.2	7.0

Table KS209EW

## Migration

Country of birth by year of arrival in the UK	Number of people	% of total residents		
		This Area	High Peak	Derbyshire
From within the UK total	2,465	97.4	96.4	96.7
From outside the UK total	66	2.6	3.6	3.3
<i>of which</i>				
- Ireland	15	0.6	0.5	0.3
- Other EU country	0	0.0	0.8	0.9
- European (Non-EU country)	16	0.6	0.2	0.1
- Other parts of the world	35	1.4	1.7	1.6

Table LC2804EW

Length of residence in the UK	Number of people	% of total residents		
		This Area	High Peak	Derbyshire
Less than 2 years	2	0.1	0.2	0.3
2 years or more but less than 5 years	12	0.5	0.5	0.5
5 years or more but less than 10 years	12	0.5	0.6	0.6
10 years or more	40	1.6	2.2	2.0
Born in the UK	2,465	97.4	96.4	96.7

Table QS803EW

# 2011 Census: Summary Profile

Gamesley

Area type and code  
Ward (E05003398)

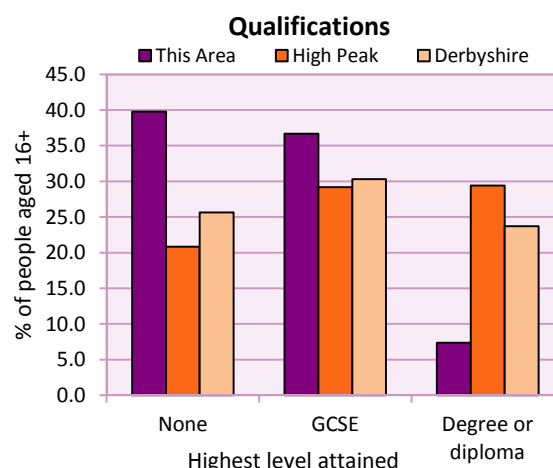
## Education

Full-time students	Number	% of population in age group		
		This Area	High Peak	Derbyshire
aged 16-17	63	77.8	88.0	86.3
aged 18-74	54	3.3	3.9	2.9

Table KS501EW

Qualifications	People (aged 16+)	% of all people aged 16+		
		This Area	High Peak	Derbyshire
No qualifications	739	39.8	20.9	25.7
Highest level attained				
GCSE	682	36.7	29.2	30.3
Degree or diploma	137	7.4	29.4	23.7

Table KS501EW



## Workforce

Economic activity	People aged 16-74								
	This Area			High Peak			Derbyshire		
	Males	Females	All	Males	Females	All	Males	Females	All
Economically active									
- number	555	517	1,072	25,645	22,915	48,560	211,349	185,704	397,053
- rate (%)	69.9	55.7	62.3	76.3	67.8	72.1	74.8	65.1	69.9
All unemployed									
- number	101	81	182	1,563	1,013	2,576	13,541	8,665	22,206
- rate (%)	12.7	8.7	10.6	4.7	3.0	3.8	4.8	3.0	3.9
Economically inactive									
- number	239	411	650	7,965	10,864	18,829	71,240	99,505	170,745
- rate (%)	30.1	44.3	37.7	23.7	32.2	27.9	25.2	34.9	30.1

Table KS601EW KS602EW and KS603EW

Hours worked	% of people aged 16-74 in employment					
	Full time (more than 30 hrs)			Part time (30 hrs or less)		
	This Area	High Peak	Derbyshire	This Area	High Peak	Derbyshire
All	68.9	70.0	70.3	31.1	30.0	29.7
Males	87.7	85.6	86.5	12.3	14.4	13.5
Females	49.5	52.8	52.1	50.5	47.2	47.9

Table KS604EW

People travelling to work	This Area	High Peak	Derbyshire
- works mainly at or from home %	5.3	12.2	10.5
- by car or van %	49.4	59.4	65.6
- by public transport or taxi %	13.9	8.4	6.6
- by all other methods of travel %	31.4	20.0	17.4
Average distance travelled km	12.4	15.7	15.2

Table LC7101EW and QS702EW

# 2011 Census: Summary Profile

Gamesley

Area type and code  
Ward (E05003398)

## Workforce (continued)

Industry (people aged 16-74 in employment)	Number of workers	% of people aged 16-74 in employment		
		This Area	High Peak	Derbyshire
Agriculture, forestry and fishing	3	0.3	1.0	1.0
Mining, quarrying and utilities	19	2.2	2.0	1.9
Manufacturing	131	15.0	13.3	14.9
Construction	55	6.3	7.6	8.5
Wholesale and retail	176	20.1	14.4	16.6
Business services	226	25.8	27.4	25.1
Public services	226	25.8	29.6	27.5
Other services	40	4.6	4.7	4.5

Chart category

Other

Other

Manufacturing

Other

Services

Services

Services

Services

Table KS605EW

Occupation (people aged 16-74 in employment)	Number of workers	% of people aged 16-74 in employment		
		This Area	High Peak	Derbyshire
Managers, directors & senior officials	49	5.6	11.3	10.9
Professional	41	4.7	17.8	15.1
Associate professional & technical	50	5.7	11.7	11.0
Administrative & secretarial	61	7.0	10.1	10.9
Skilled trades	122	13.9	12.6	13.3
Caring, leisure & other services	145	16.6	10.0	9.6
Sales & customer service	90	10.3	7.0	7.9
Process, plant & machine operatives	134	15.3	9.0	9.6
Elementary occupations	184	21.0	10.4	11.7

Chart category

Managerial & professional

Managerial & professional

Managerial & professional

Other non-manual

Manual

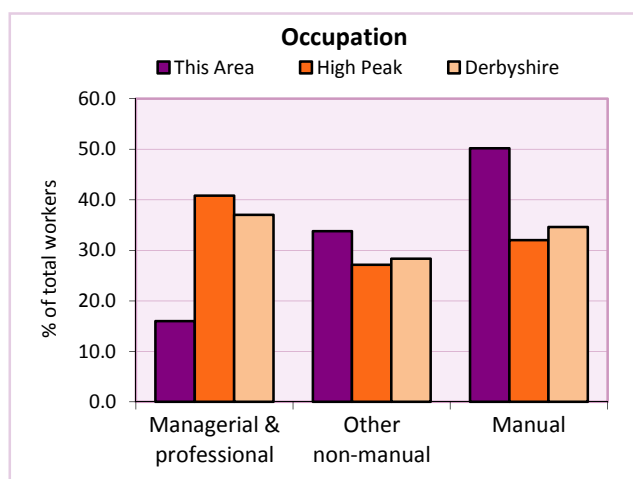
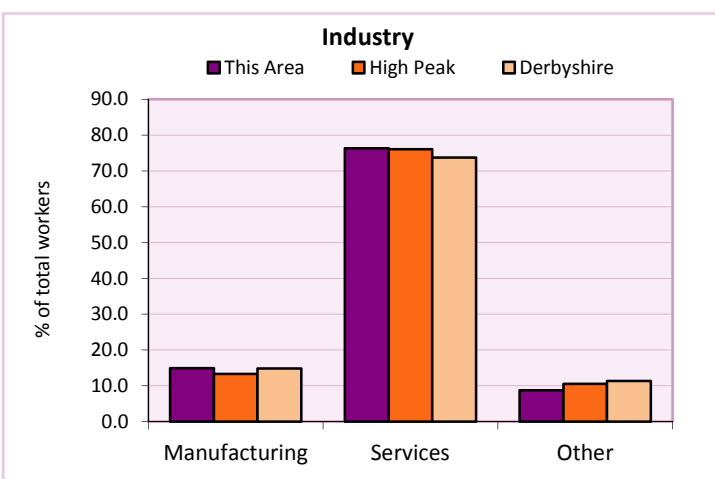
Other non-manual

Other non-manual

Manual

Manual

Table KS608EW



For an **explanation** of the various terms used in these tables, please see the accompanying **Glossary**.

**Extension profiles** covering the following topics in more detail will also be available:

**Population, Economic Activity, Equalities, Health, Households, and Housing.**

**Profiles** in Adobe Acrobat (pdf) format can be downloaded from the Derbyshire Observatory web site, which also provides interactive maps and charts - <http://observatory.derbyshire.gov.uk>

**Please note that figures vary across the Census Profiles as different denominators are used. 2011 Census Table reference numbers are provided beneath each individual table in the Census Profiles should you require further information.**

Version: 6.31