

Hadfield North

Area type and code
Ward (E05003399)

Population

Population change since 2001

Change in numbers	% change		
	This Area	High Peak	Derbyshire
+31	+1.6	+1.6	+4.8

2011 Census Table KS101EW and 2001 Census Table S001

Residents

	Number
Total resident population	2,003
- in households	1,935
- in communal establishments	68

Table KS101EW

Density of population

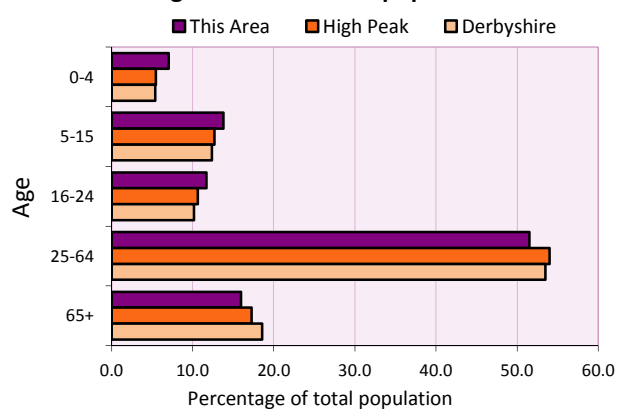
Area (hectares)	Persons per hectare		
	This Area	High Peak	Derbyshire
67	30.0	1.7	3.0

Table KS101EW

Age structure	Number of people	% of total population		
		This Area	High Peak	Derbyshire
0-4 years	141	7.0	5.5	5.4
5-15 years	276	13.8	12.7	12.4
16-24 years	234	11.7	10.6	10.2
25-64 years	1,032	51.5	54.0	53.5
65 and over	320	16.0	17.2	18.6

Table KS102EW

Age structure of the population



Households

Total households

Number	Average household size (persons)		
	This Area	High Peak	Derbyshire
850	2.36	2.33	2.31

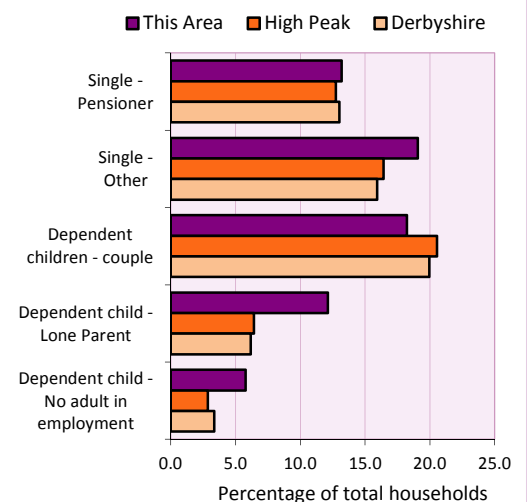
Table KS101EW and KS403EW

Household types

Number	% of total households			
	This Area	High Peak	Derbyshire	
Single person households	274	32.2	29.2	28.9
Pensioner	112	13.2	12.7	13.0
Other	162	19.1	16.4	15.9
Households with dependent children				
All	275	32.4	28.4	27.6
Couple	155	18.2	20.5	19.9
Lone parent	103	12.1	6.4	6.2
No adult in employment	49	5.8	2.9	3.4
One person with a long-term health problem - or disability	54	6.4	4.4	4.5

Table KS105EW and KS106EW

Household types



Car/van ownership

Number of households	% of total households			
	This Area	High Peak	Derbyshire	
No car or van	277	32.6	19.6	20.1

Table KS404EW

2011 Census: Summary Profile

Hadfield North

Area type and code
Ward (E05003399)

Accommodation

Tenure	Number of households	% of total households		
		This Area	High Peak	Derbyshire
Owner-occupied	477	56.1	72.6	71.4
Rented from council/housing association	247	29.1	12.7	15.3
Private/other rented	106	12.5	13.4	12.0
Living rent free	20	2.4	1.2	1.3

Table KS402EW

Amenities	Number of households	% of total households		
		This Area	High Peak	Derbyshire
Overcrowded households	53	6.2	4.8	3.7
Households without central heating	21	2.5	2.3	2.0

Table KS403EW

Total household spaces	884
-------------------------------	------------

Table KS401EW

Type of accommodation	Number of household spaces	% of total household spaces		
		This Area	High Peak	Derbyshire
Detached	81	9.2	23.5	31.8
Semi-detached	148	16.7	29.2	38.7
Terraced	527	59.6	34.4	20.6
Flat/maisonette/apartment	128	14.5	12.6	8.6
Other	0	0.0	0.2	0.3

Table KS401EW

Marital status

Marital status	Number of people	% of people aged 16+		
		This Area	High Peak	Derbyshire
Single	576	36.3	30.9	29.3
Married	604	38.1	49.1	50.5
Same-sex civil partnership	2	0.1	0.2	0.2
Separated	57	3.6	2.4	2.4
Divorced	204	12.9	9.9	9.9
Widowed / surviving partner	143	9.0	7.4	7.7

Table KS103EW

Health

Health	Number of people	% of total population		
		This Area	High Peak	Derbyshire
People whose day-to-day activities are limited	458	22.9	18.1	20.4
People with 'bad' general health	163	8.1	5.2	6.2
People providing unpaid care	189	9.4	11.3	12.1

Table KS301EW

2011 Census: Summary Profile

Hadfield North

Area type and code
Ward (E05003399)

Ethnicity

Ethnic group	Number of people	% of total population		
		This Area	High Peak	Derbyshire
White British	1,928	96.3	95.9	95.8
Black and Minority Ethnic (BME)	75	3.7	4.1	4.2
White Other	30	1.5	2.0	1.7
Mixed/multiple ethnic groups	20	1.0	1.0	0.9
Asian/Asian British	15	0.7	0.8	1.1
Black/African/Caribbean/Black British	8	0.4	0.2	0.4
Other ethnic group	2	0.1	0.1	0.1

Table KS201EW

Religion

Religion	Number of people	% of total population		
		This Area	High Peak	Derbyshire
Christian	1,314	65.6	64.1	63.6
Buddhist	0	0.0	0.3	0.2
Hindu	4	0.2	0.1	0.2
Jewish	1	0.0	0.0	0.0
Muslim	7	0.3	0.2	0.3
Sikh	1	0.0	0.0	0.3
Other religions	13	0.6	0.4	0.4
No religion	533	26.6	27.6	28.0
Not stated	130	6.5	7.2	7.0

Table KS209EW

Migration

Country of birth by year of arrival in the UK	Number of people	% of total residents		
		This Area	High Peak	Derbyshire
From within the UK total	1,945	97.1	96.4	96.7
From outside the UK total	58	2.9	3.6	3.3
<i>of which</i>				
- Ireland	5	0.2	0.5	0.3
- Other EU country	16	0.8	0.8	0.9
- European (Non-EU country)	6	0.3	0.2	0.1
- Other parts of the world	31	1.5	1.7	1.6

Table LC2804EW

Length of residence in the UK	Number of people	% of total residents		
		This Area	High Peak	Derbyshire
Less than 2 years	1	0.0	0.2	0.3
2 years or more but less than 5 years	15	0.7	0.5	0.5
5 years or more but less than 10 years	5	0.2	0.6	0.6
10 years or more	37	1.8	2.2	2.0
Born in the UK	1,945	97.1	96.4	96.7

Table QS803EW

2011 Census: Summary Profile

Hadfield North

Area type and code
Ward (E05003399)

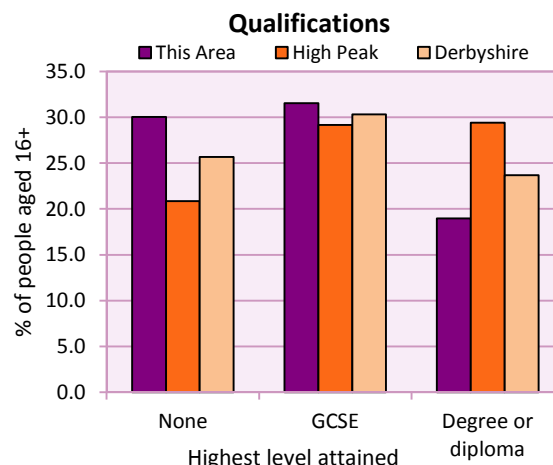
Education

Full-time students	Number	% of population in age group		
		This Area	High Peak	Derbyshire
aged 16-17	45	91.8	88.0	86.3
aged 18-74	56	4.1	3.9	2.9

Table KS501EW

Qualifications	People (aged 16+)	% of all people aged 16+		
		This Area	High Peak	Derbyshire
No qualifications	476	30.0	20.9	25.7
Highest level attained				
GCSE	500	31.5	29.2	30.3
Degree or diploma	301	19.0	29.4	23.7

Table KS501EW



Workforce

Economic activity	People aged 16-74								
	This Area			High Peak			Derbyshire		
	Males	Females	All	Males	Females	All	Males	Females	All
Economically active									
- number	505	478	983	25,645	22,915	48,560	211,349	185,704	397,053
- rate (%)	72.1	65.8	68.9	76.3	67.8	72.1	74.8	65.1	69.9
All unemployed									
- number	47	37	84	1,563	1,013	2,576	13,541	8,665	22,206
- rate (%)	6.7	5.1	5.9	4.7	3.0	3.8	4.8	3.0	3.9
Economically inactive									
- number	195	248	443	7,965	10,864	18,829	71,240	99,505	170,745
- rate (%)	27.9	34.2	31.1	23.7	32.2	27.9	25.2	34.9	30.1

Table KS601EW KS602EW and KS603EW

Hours worked	% of people aged 16-74 in employment					
	Full time (more than 30 hrs)			Part time (30 hrs or less)		
	This Area	High Peak	Derbyshire	This Area	High Peak	Derbyshire
All	71.0	70.0	70.3	29.0	30.0	29.7
Males	85.5	85.6	86.5	14.5	14.4	13.5
Females	55.8	52.8	52.1	44.2	47.2	47.9

Table KS604EW

People travelling to work	This Area	High Peak	Derbyshire
- works mainly at or from home %	8.5	12.2	10.5
- by car or van %	58.1	59.4	65.6
- by public transport or taxi %	10.7	8.4	6.6
- by all other methods of travel %	22.7	20.0	17.4
Average distance travelled km	15.4	15.7	15.2

Table LC7101EW and QS702EW

2011 Census: Summary Profile

Hadfield North

Area type and code
Ward (E05003399)

Workforce (continued)

Industry (people aged 16-74 in employment)	Number of workers	% of people aged 16-74 in employment		
		This Area	High Peak	Derbyshire
Agriculture, forestry and fishing	0	0.0	1.0	1.0
Mining, quarrying and utilities	14	1.6	2.0	1.9
Manufacturing	122	13.7	13.3	14.9
Construction	84	9.4	7.6	8.5
Wholesale and retail	151	17.0	14.4	16.6
Business services	206	23.2	27.4	25.1
Public services	274	30.8	29.6	27.5
Other services	38	4.3	4.7	4.5

Chart category

Other

Other

Manufacturing

Other

Services

Services

Services

Services

Table KS605EW

Occupation (people aged 16-74 in employment)	Number of workers	% of people aged 16-74 in employment		
		This Area	High Peak	Derbyshire
Managers, directors & senior officials	69	7.8	11.3	10.9
Professional	109	12.3	17.8	15.1
Associate professional & technical	94	10.6	11.7	11.0
Administrative & secretarial	97	10.9	10.1	10.9
Skilled trades	117	13.2	12.6	13.3
Caring, leisure & other services	107	12.0	10.0	9.6
Sales & customer service	67	7.5	7.0	7.9
Process, plant & machine operatives	93	10.5	9.0	9.6
Elementary occupations	136	15.3	10.4	11.7

Chart category

Managerial & professional

Managerial & professional

Managerial & professional

Other non-manual

Manual

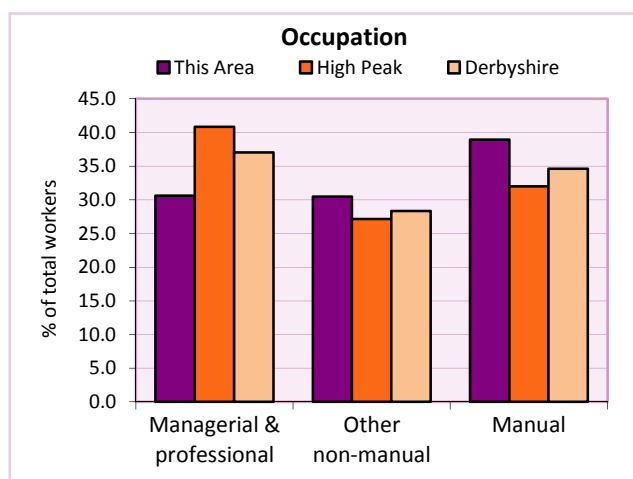
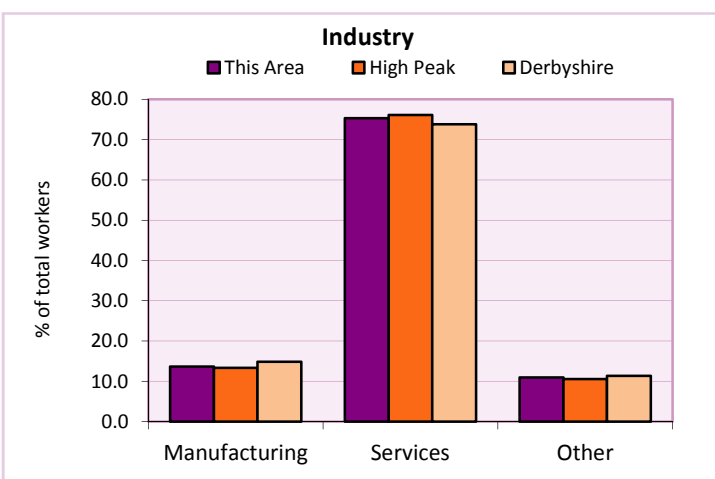
Other non-manual

Other non-manual

Manual

Manual

Table KS608EW



For an **explanation** of the various terms used in these tables, please see the accompanying **Glossary**.

Extension profiles covering the following topics in more detail will also be available:

Population, Economic Activity, Equalities, Health, Households, and Housing.

Profiles in Adobe Acrobat (pdf) format can be downloaded from the Derbyshire Observatory web site, which also provides interactive maps and charts - <http://observatory.derbyshire.gov.uk>

Please note that figures vary across the Census Profiles as different denominators are used. 2011 Census Table reference numbers are provided beneath each individual table in the Census Profiles should you require further information.

Version: 6.31