

Hadfield South

Area type and code
Ward (E05003400)

Population

Population change since 2001

Change in numbers	% change		
	This Area	High Peak	Derbyshire
-176	-3.9	+1.6	+4.8

2011 Census Table KS101EW and 2001 Census Table S001

Density of population

Area (hectares)	Persons per hectare		
	This Area	High Peak	Derbyshire
165	26.1	1.7	3.0

Table KS101EW

Age structure	Number of people	% of total population		
		This Area	High Peak	Derbyshire
0-4 years	247	5.7	5.5	5.4
5-15 years	536	12.5	12.7	12.4
16-24 years	483	11.2	10.6	10.2
25-64 years	2,328	54.1	54.0	53.5
65 and over	708	16.5	17.2	18.6

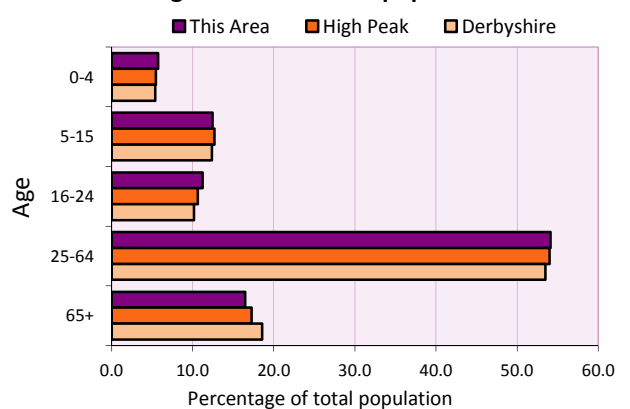
Table KS102EW

Residents

	Number
Total resident population	4,302
- in households	4,265
- in communal establishments	37

Table KS101EW

Age structure of the population



Households

Total households

Number	Average household size (persons)		
	This Area	High Peak	Derbyshire
1,748	2.46	2.33	2.31

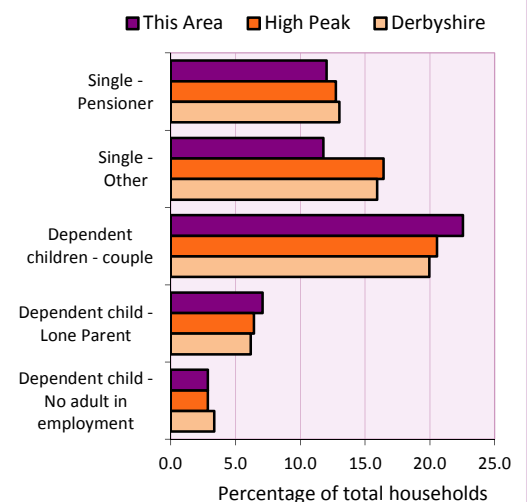
Table KS101EW and KS403EW

Household types

Number	% of total households			
	This Area	High Peak	Derbyshire	
Single person households	416	23.8	29.2	28.9
Pensioner	210	12.0	12.7	13.0
Other	206	11.8	16.4	15.9
Households with dependent children				
All	547	31.3	28.4	27.6
Couple	394	22.5	20.5	19.9
Lone parent	124	7.1	6.4	6.2
No adult in employment	50	2.9	2.9	3.4
One person with a long-term health problem - or disability	100	5.7	4.4	4.5

Table KS105EW and KS106EW

Household types



Car/van ownership

Number of households	% of total households			
	This Area	High Peak	Derbyshire	
No car or van	329	18.8	19.6	20.1

Table KS404EW

2011 Census: Summary Profile

Hadfield South

Area type and code
Ward (E05003400)

Accommodation

Tenure	Number of households	% of total households		
		This Area	High Peak	Derbyshire
Owner-occupied	1,405	80.4	72.6	71.4
Rented from council/housing association	178	10.2	12.7	15.3
Private/other rented	149	8.5	13.4	12.0
Living rent free	16	0.9	1.2	1.3

Table KS402EW

Amenities	Number of households	% of total households		
		This Area	High Peak	Derbyshire
Overcrowded households	56	3.2	4.8	3.7
Households without central heating	30	1.7	2.3	2.0

Table KS403EW

Total household spaces	1,801
-------------------------------	--------------

Table KS401EW

Type of accommodation	Number of household spaces	% of total household spaces		
		This Area	High Peak	Derbyshire
Detached	434	24.1	23.5	31.8
Semi-detached	625	34.7	29.2	38.7
Terraced	621	34.5	34.4	20.6
Flat/maisonette/apartment	121	6.7	12.6	8.6
Other	0	0.0	0.2	0.3

Table KS401EW

Marital status

Marital status	Number of people	% of people aged 16+		
		This Area	High Peak	Derbyshire
Single	1,074	30.5	30.9	29.3
Married	1,840	52.3	49.1	50.5
Same-sex civil partnership	6	0.2	0.2	0.2
Separated	68	1.9	2.4	2.4
Divorced	283	8.0	9.9	9.9
Widowed / surviving partner	248	7.0	7.4	7.7

Table KS103EW

Health

Health	Number of people	% of total population		
		This Area	High Peak	Derbyshire
People whose day-to-day activities are limited	777	18.1	18.1	20.4
People with 'bad' general health	229	5.3	5.2	6.2
People providing unpaid care	506	11.8	11.3	12.1

Table KS301EW

2011 Census: Summary Profile

Hadfield South

Area type and code
Ward (E05003400)

Ethnicity

Ethnic group	Number of people	% of total population		
		This Area	High Peak	Derbyshire
White British	4,116	95.7	95.9	95.8
Black and Minority Ethnic (BME)	186	4.3	4.1	4.2
White Other	76	1.8	2.0	1.7
Mixed/multiple ethnic groups	60	1.4	1.0	0.9
Asian/Asian British	38	0.9	0.8	1.1
Black/African/Caribbean/Black British	7	0.2	0.2	0.4
Other ethnic group	5	0.1	0.1	0.1

Table KS201EW

Religion

Religion	Number of people	% of total population		
		This Area	High Peak	Derbyshire
Christian	2,945	68.5	64.1	63.6
Buddhist	6	0.1	0.3	0.2
Hindu	6	0.1	0.1	0.2
Jewish	3	0.1	0.0	0.0
Muslim	8	0.2	0.2	0.3
Sikh	0	0.0	0.0	0.3
Other religions	17	0.4	0.4	0.4
No religion	1,043	24.2	27.6	28.0
Not stated	274	6.4	7.2	7.0

Table KS209EW

Migration

Country of birth by year of arrival in the UK	Number of people	% of total residents		
		This Area	High Peak	Derbyshire
From within the UK total	4,192	97.4	96.4	96.7
From outside the UK total	110	2.6	3.6	3.3
<i>of which</i>				
- Ireland	22	0.5	0.5	0.3
- Other EU country	10	0.2	0.8	0.9
- European (Non-EU country)	26	0.6	0.2	0.1
- Other parts of the world	52	1.2	1.7	1.6

Table LC2804EW

Length of residence in the UK	Number of people	% of total residents		
		This Area	High Peak	Derbyshire
Less than 2 years	5	0.1	0.2	0.3
2 years or more but less than 5 years	8	0.2	0.5	0.5
5 years or more but less than 10 years	16	0.4	0.6	0.6
10 years or more	81	1.9	2.2	2.0
Born in the UK	4,192	97.4	96.4	96.7

Table QS803EW

2011 Census: Summary Profile

Hadfield South

Area type and code
Ward (E05003400)

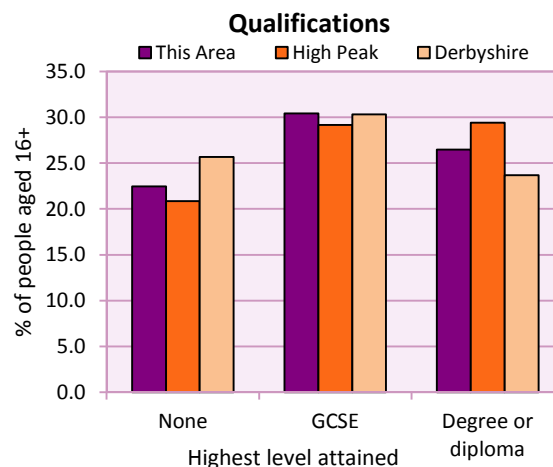
Education

Full-time students	Number	% of population in age group		
		This Area	High Peak	Derbyshire
aged 16-17	119	86.2	88.0	86.3
aged 18-74	96	3.1	3.9	2.9

Table KS501EW

Qualifications	People (aged 16+)	% of all people aged 16+		
		This Area	High Peak	Derbyshire
No qualifications	790	22.4	20.9	25.7
Highest level attained				
GCSE	1,070	30.4	29.2	30.3
Degree or diploma	932	26.5	29.4	23.7

Table KS501EW



Workforce

Economic activity	People aged 16-74								
	This Area			High Peak			Derbyshire		
	Males	Females	All	Males	Females	All	Males	Females	All
Economically active									
- number	1,204	1,110	2,314	25,645	22,915	48,560	211,349	185,704	397,053
- rate (%)	76.7	68.0	72.3	76.3	67.8	72.1	74.8	65.1	69.9
All unemployed									
- number	75	55	130	1,563	1,013	2,576	13,541	8,665	22,206
- rate (%)	4.8	3.4	4.1	4.7	3.0	3.8	4.8	3.0	3.9
Economically inactive									
- number	366	522	888	7,965	10,864	18,829	71,240	99,505	170,745
- rate (%)	23.3	32.0	27.7	23.7	32.2	27.9	25.2	34.9	30.1

Table KS601EW KS602EW and KS603EW

Hours worked	% of people aged 16-74 in employment					
	Full time (more than 30 hrs)			Part time (30 hrs or less)		
	This Area	High Peak	Derbyshire	This Area	High Peak	Derbyshire
All	72.1	70.0	70.3	27.9	30.0	29.7
Males	86.8	85.6	86.5	13.2	14.4	13.5
Females	56.3	52.8	52.1	43.7	47.2	47.9

Table KS604EW

People travelling to work	This Area	High Peak	Derbyshire
- works mainly at or from home %	9.3	12.2	10.5
- by car or van %	62.5	59.4	65.6
- by public transport or taxi %	9.1	8.4	6.6
- by all other methods of travel %	19.1	20.0	17.4
Average distance travelled km	13.8	15.7	15.2

Table LC7101EW and QS702EW

2011 Census: Summary Profile

Hadfield South

Area type and code
Ward (E05003400)

Workforce (continued)

Industry (people aged 16-74 in employment)	Number of workers	% of people aged 16-74 in employment		
		This Area	High Peak	Derbyshire
Agriculture, forestry and fishing	6	0.3	1.0	1.0
Mining, quarrying and utilities	41	1.9	2.0	1.9
Manufacturing	293	13.5	13.3	14.9
Construction	176	8.1	7.6	8.5
Wholesale and retail	353	16.3	14.4	16.6
Business services	545	25.1	27.4	25.1
Public services	666	30.7	29.6	27.5
Other services	87	4.0	4.7	4.5

Chart category

Other

Other

Manufacturing

Other

Services

Services

Services

Services

Table KS605EW

Occupation (people aged 16-74 in employment)	Number of workers	% of people aged 16-74 in employment		
		This Area	High Peak	Derbyshire
Managers, directors & senior officials	212	9.8	11.3	10.9
Professional	337	15.6	17.8	15.1
Associate professional & technical	249	11.5	11.7	11.0
Administrative & secretarial	250	11.5	10.1	10.9
Skilled trades	286	13.2	12.6	13.3
Caring, leisure & other services	228	10.5	10.0	9.6
Sales & customer service	196	9.0	7.0	7.9
Process, plant & machine operatives	182	8.4	9.0	9.6
Elementary occupations	227	10.5	10.4	11.7

Chart category

Managerial & professional

Managerial & professional

Managerial & professional

Other non-manual

Manual

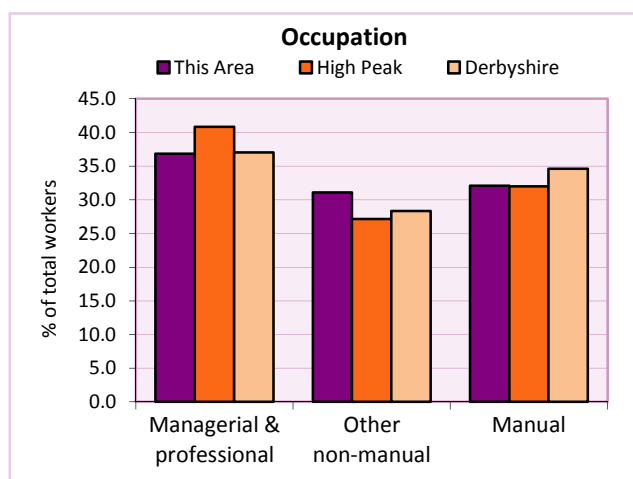
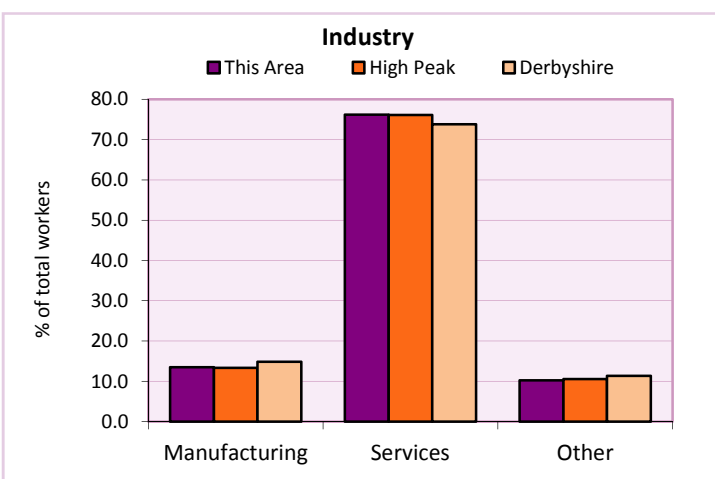
Other non-manual

Other non-manual

Manual

Manual

Table KS608EW



For an **explanation** of the various terms used in these tables, please see the accompanying **Glossary**.

Extension profiles covering the following topics in more detail will also be available:

Population, Economic Activity, Equalities, Health, Households, and Housing.

Profiles in Adobe Acrobat (pdf) format can be downloaded from the Derbyshire Observatory web site, which also provides interactive maps and charts - <http://observatory.derbyshire.gov.uk>

Please note that figures vary across the Census Profiles as different denominators are used. 2011 Census Table reference numbers are provided beneath each individual table in the Census Profiles should you require further information.

Version: 6.31