

## Hayfield

Area type and code  
Ward (E05003401)

### Population

#### Population change since 2001

Change in numbers	% change		
	This Area	High Peak	Derbyshire
-108	-5.0	+1.6	+4.8

2011 Census Table KS101EW and 2001 Census Table S001

#### Residents

	Number
Total resident population	2,056
- in households	2,054
- in communal establishments	2

Table KS101EW

#### Density of population

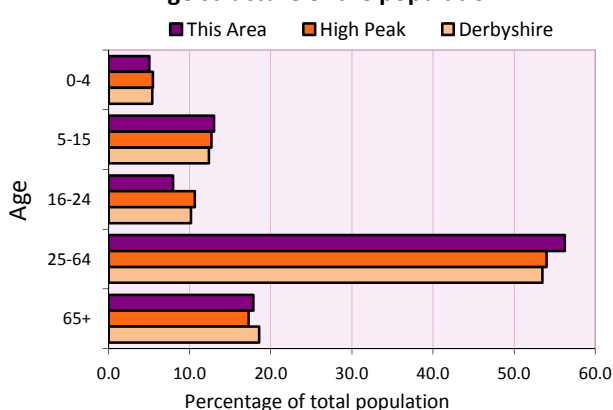
Area (hectares)	Persons per hectare		
	This Area	High Peak	Derbyshire
2,435	0.8	1.7	3.0

Table KS101EW

Age structure	Number of people	% of total population		
		This Area	High Peak	Derbyshire
0-4 years	103	5.0	5.5	5.4
5-15 years	267	13.0	12.7	12.4
16-24 years	163	7.9	10.6	10.2
25-64 years	1,156	56.2	54.0	53.5
65 and over	367	17.9	17.2	18.6

Table KS102EW

#### Age structure of the population



### Households

#### Total households

Number	Average household size (persons)		
	This Area	High Peak	Derbyshire
911	2.26	2.33	2.31

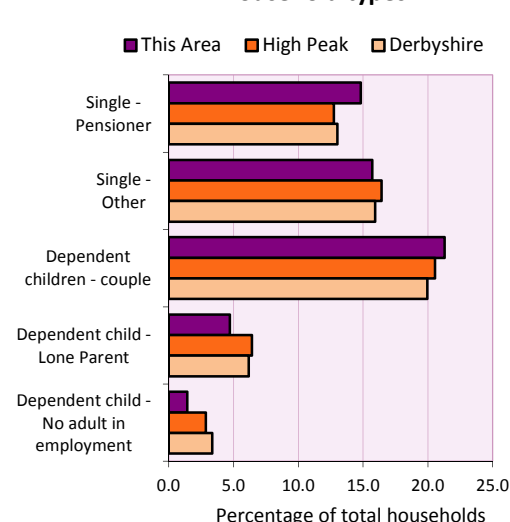
Table KS101EW and KS403EW

#### Household types

Number	% of total households			
	This Area	High Peak	Derbyshire	
Single person households	278	30.5	29.2	28.9
Pensioner	135	14.8	12.7	13.0
Other	143	15.7	16.4	15.9
Households with dependent children				
All	244	26.8	28.4	27.6
Couple	194	21.3	20.5	19.9
Lone parent	43	4.7	6.4	6.2
No adult in employment	13	1.4	2.9	3.4
One person with a long-term health problem - or disability	26	2.9	4.4	4.5

Table KS105EW and KS106EW

#### Household types



#### Car/van ownership

Number of households	% of total households			
	This Area	High Peak	Derbyshire	
No car or van	139	15.3	19.6	20.1

Table KS404EW

# 2011 Census: Summary Profile

Hayfield

Area type and code  
Ward (E05003401)

## Accommodation

Tenure	Number of households	% of total households		
		This Area	High Peak	Derbyshire
Owner-occupied	692	76.0	72.6	71.4
Rented from council/housing association	130	14.3	12.7	15.3
Private/other rented	76	8.3	13.4	12.0
Living rent free	13	1.4	1.2	1.3

Table KS402EW

Amenities	Number of households	% of total households		
		This Area	High Peak	Derbyshire
Overcrowded households	33	3.6	4.8	3.7
Households without central heating	20	2.2	2.3	2.0

Table KS403EW

<b>Total household spaces</b>	<b>960</b>
-------------------------------	------------

Table KS401EW

Type of accommodation	Number of household spaces	% of total household spaces		
		This Area	High Peak	Derbyshire
Detached	261	27.2	23.5	31.8
Semi-detached	252	26.3	29.2	38.7
Terraced	344	35.8	34.4	20.6
Flat/maisonette/apartment	103	10.7	12.6	8.6
Other	0	0.0	0.2	0.3

Table KS401EW

## Marital status

Marital status	Number of people	% of people aged 16+		
		This Area	High Peak	Derbyshire
Single	442	26.2	30.9	29.3
Married	917	54.4	49.1	50.5
Same-sex civil partnership	0	0.0	0.2	0.2
Separated	38	2.3	2.4	2.4
Divorced	159	9.4	9.9	9.9
Widowed / surviving partner	130	7.7	7.4	7.7

Table KS103EW

## Health

Health	Number of people	% of total population		
		This Area	High Peak	Derbyshire
People whose day-to-day activities are limited	346	16.8	18.1	20.4
People with 'bad' general health	100	4.9	5.2	6.2
People providing unpaid care	220	10.7	11.3	12.1

Table KS301EW

# 2011 Census: Summary Profile

Hayfield

Area type and code  
Ward (E05003401)

## Ethnicity

Ethnic group	Number of people	% of total population		
		This Area	High Peak	Derbyshire
White British	1,994	97.0	95.9	95.8
Black and Minority Ethnic (BME)	62	3.0	4.1	4.2
White Other	32	1.6	2.0	1.7
Mixed/multiple ethnic groups	21	1.0	1.0	0.9
Asian/Asian British	5	0.2	0.8	1.1
Black/African/Caribbean/Black British	2	0.1	0.2	0.4
Other ethnic group	2	0.1	0.1	0.1

Table KS201EW

## Religion

Religion	Number of people	% of total population		
		This Area	High Peak	Derbyshire
Christian	1,279	62.2	64.1	63.6
Buddhist	8	0.4	0.3	0.2
Hindu	2	0.1	0.1	0.2
Jewish	0	0.0	0.0	0.0
Muslim	3	0.1	0.2	0.3
Sikh	0	0.0	0.0	0.3
Other religions	2	0.1	0.4	0.4
No religion	621	30.2	27.6	28.0
Not stated	141	6.9	7.2	7.0

Table KS209EW

## Migration

Country of birth by year of arrival in the UK	Number of people	% of total residents		
		This Area	High Peak	Derbyshire
From within the UK total	2,006	97.6	96.4	96.7
From outside the UK total	50	2.4	3.6	3.3
<i>of which</i>				
- Ireland	8	0.4	0.5	0.3
- Other EU country	7	0.3	0.8	0.9
- European (Non-EU country)	15	0.7	0.2	0.1
- Other parts of the world	20	1.0	1.7	1.6

Table LC2804EW

Length of residence in the UK	Number of people	% of total residents		
		This Area	High Peak	Derbyshire
Less than 2 years	1	0.0	0.2	0.3
2 years or more but less than 5 years	2	0.1	0.5	0.5
5 years or more but less than 10 years	4	0.2	0.6	0.6
10 years or more	43	2.1	2.2	2.0
Born in the UK	2,006	97.6	96.4	96.7

Table QS803EW

# 2011 Census: Summary Profile

Hayfield

Area type and code  
Ward (E05003401)

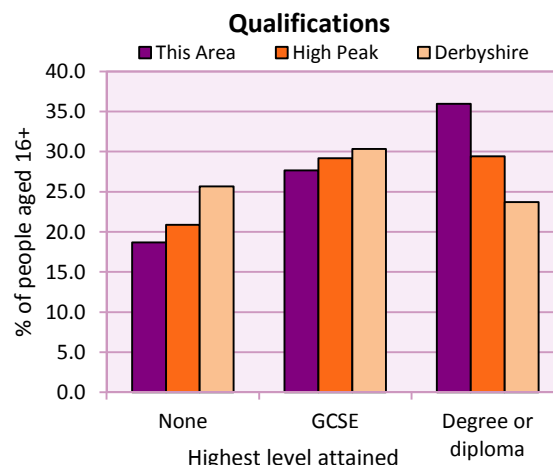
## Education

Full-time students	Number	% of population in age group		
		This Area	High Peak	Derbyshire
aged 16-17	46	97.9	88.0	86.3
aged 18-74	37	2.5	3.9	2.9

Table KS501EW

Qualifications	People (aged 16+)	% of all people aged 16+		
		This Area	High Peak	Derbyshire
No qualifications	315	18.7	20.9	25.7
Highest level attained				
GCSE	466	27.6	29.2	30.3
Degree or diploma	606	35.9	29.4	23.7

Table KS501EW



## Workforce

Economic activity	People aged 16-74								
	This Area			High Peak			Derbyshire		
	Males	Females	All	Males	Females	All	Males	Females	All
Economically active									
- number	584	517	1,101	25,645	22,915	48,560	211,349	185,704	397,053
- rate (%)	77.2	66.9	72.0	76.3	67.8	72.1	74.8	65.1	69.9
All unemployed									
- number	28	16	44	1,563	1,013	2,576	13,541	8,665	22,206
- rate (%)	3.7	2.1	2.9	4.7	3.0	3.8	4.8	3.0	3.9
Economically inactive									
- number	172	256	428	7,965	10,864	18,829	71,240	99,505	170,745
- rate (%)	22.8	33.1	28.0	23.7	32.2	27.9	25.2	34.9	30.1

Table KS601EW KS602EW and KS603EW

Hours worked	% of people aged 16-74 in employment					
	Full time (more than 30 hrs)			Part time (30 hrs or less)		
	This Area	High Peak	Derbyshire	This Area	High Peak	Derbyshire
All	68.5	70.0	70.3	31.5	30.0	29.7
Males	83.6	85.6	86.5	16.4	14.4	13.5
Females	51.8	52.8	52.1	48.2	47.2	47.9

Table KS604EW

People travelling to work	This Area	High Peak	Derbyshire
- works mainly at or from home %	16.8	12.2	10.5
- by car or van %	62.2	59.4	65.6
- by public transport or taxi %	8.6	8.4	6.6
- by all other methods of travel %	12.4	20.0	17.4
Average distance travelled km	18.5	15.7	15.2

Table LC7101EW and QS702EW

# 2011 Census: Summary Profile

Hayfield

Area type and code  
Ward (E05003401)

## Workforce (continued)

Industry (people aged 16-74 in employment)	Number of workers	% of people aged 16-74 in employment		
		This Area	High Peak	Derbyshire
Agriculture, forestry and fishing	11	1.0	1.0	1.0
Mining, quarrying and utilities	11	1.0	2.0	1.9
Manufacturing	127	12.1	13.3	14.9
Construction	76	7.2	7.6	8.5
Wholesale and retail	145	13.8	14.4	16.6
Business services	306	29.1	27.4	25.1
Public services	323	30.7	29.6	27.5
Other services	53	5.0	4.7	4.5

Chart category

Other

Other

Manufacturing

Other

Services

Services

Services

Services

Table KS605EW

Occupation (people aged 16-74 in employment)	Number of workers	% of people aged 16-74 in employment		
		This Area	High Peak	Derbyshire
Managers, directors & senior officials	147	14.0	11.3	10.9
Professional	257	24.4	17.8	15.1
Associate professional & technical	138	13.1	11.7	11.0
Administrative & secretarial	106	10.1	10.1	10.9
Skilled trades	133	12.6	12.6	13.3
Caring, leisure & other services	88	8.4	10.0	9.6
Sales & customer service	39	3.7	7.0	7.9
Process, plant & machine operatives	65	6.2	9.0	9.6
Elementary occupations	79	7.5	10.4	11.7

Chart category

Managerial & professional

Managerial & professional

Managerial & professional

Other non-manual

Manual

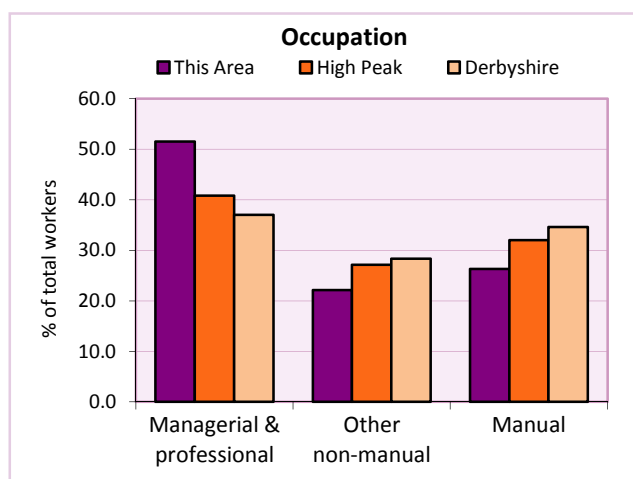
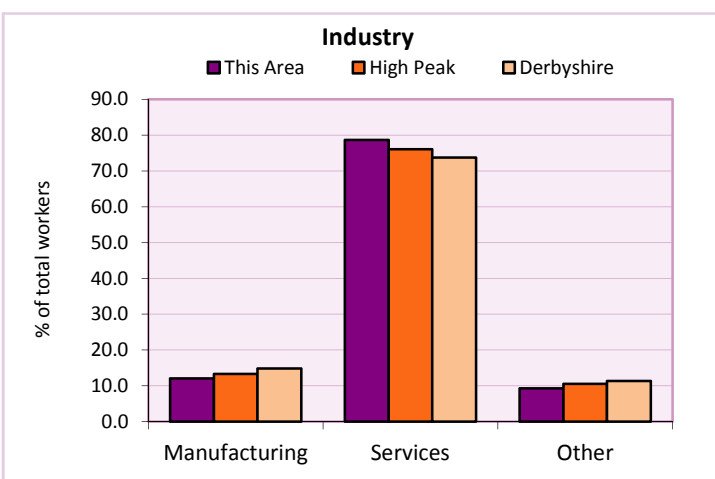
Other non-manual

Other non-manual

Manual

Manual

Table KS608EW



For an **explanation** of the various terms used in these tables, please see the accompanying **Glossary**.

**Extension profiles** covering the following topics in more detail will also be available:

**Population, Economic Activity, Equalities, Health, Households, and Housing.**

**Profiles** in Adobe Acrobat (pdf) format can be downloaded from the Derbyshire Observatory web site, which also provides interactive maps and charts - <http://observatory.derbyshire.gov.uk>

**Please note that figures vary across the Census Profiles as different denominators are used. 2011 Census Table reference numbers are provided beneath each individual table in the Census Profiles should you require further information.**

Version: 6.31