

Howard Town

Area type and code
Ward (E05003403)

Population

Population change since 2001

Change in numbers	% change		
	This Area	High Peak	Derbyshire
-87	-2.0	+1.6	+4.8

2011 Census Table KS101EW and 2001 Census Table S001

Residents

	Number
Total resident population	4,171
- in households	4,133
- in communal establishments	38

Table KS101EW

Density of population

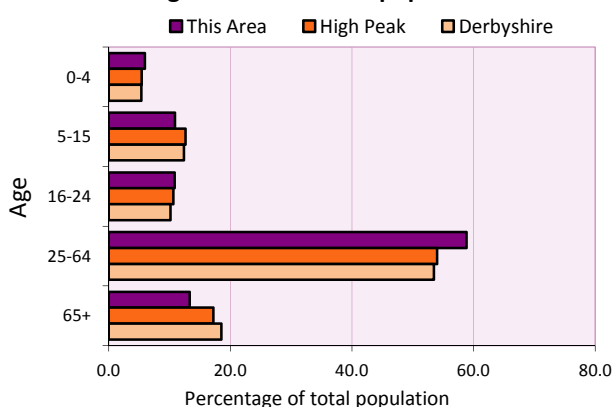
Area (hectares)	Persons per hectare		
	This Area	High Peak	Derbyshire
101	41.5	1.7	3.0

Table KS101EW

Age structure	Number of people	% of total population		
		This Area	High Peak	Derbyshire
0-4 years	249	6.0	5.5	5.4
5-15 years	456	10.9	12.7	12.4
16-24 years	454	10.9	10.6	10.2
25-64 years	2,455	58.9	54.0	53.5
65 and over	557	13.4	17.2	18.6

Table KS102EW

Age structure of the population



Households

Total households

Number	Average household size (persons)		
	This Area	High Peak	Derbyshire
1,961	2.13	2.33	2.31

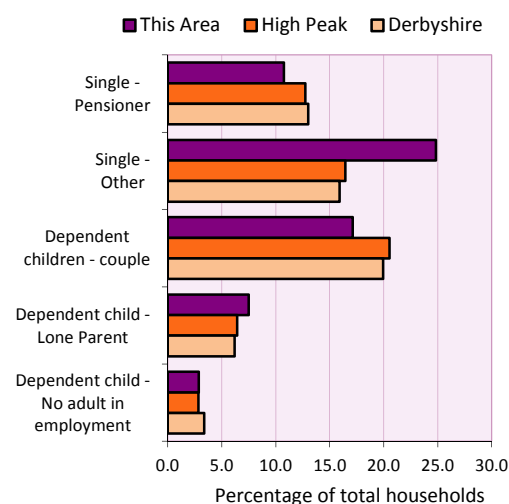
Table KS101EW and KS403EW

Household types

Number	% of total households			
	This Area	High Peak	Derbyshire	
Single person households	698	35.6	29.2	28.9
Pensioner	211	10.8	12.7	13.0
Other	487	24.8	16.4	15.9
Households with dependent children				
All	500	25.5	28.4	27.6
Couple	336	17.1	20.5	19.9
Lone parent	147	7.5	6.4	6.2
No adult in employment	56	2.9	2.9	3.4
One person with a long-term health problem - or disability	71	3.6	4.4	4.5

Table KS105EW and KS106EW

Household types



Car/van ownership

Number of households	% of total households			
	This Area	High Peak	Derbyshire	
No car or van	571	29.1	19.6	20.1

Table KS404EW

2011 Census: Summary Profile

Howard Town

Area type and code
Ward (E05003403)

Accommodation

Tenure	Number of households	% of total households		
		This Area	High Peak	Derbyshire
Owner-occupied	1,286	65.6	72.6	71.4
Rented from council/housing association	117	6.0	12.7	15.3
Private/other rented	528	26.9	13.4	12.0
Living rent free	30	1.5	1.2	1.3

Table KS402EW

Amenities	Number of households	% of total households		
		This Area	High Peak	Derbyshire
Overcrowded households	120	6.1	4.8	3.7
Households without central heating	89	4.5	2.3	2.0

Table KS403EW

Total household spaces	2,106
-------------------------------	--------------

Table KS401EW

Type of accommodation	Number of household spaces	% of total household spaces		
		This Area	High Peak	Derbyshire
Detached	84	4.0	23.5	31.8
Semi-detached	204	9.7	29.2	38.7
Terraced	1,446	68.7	34.4	20.6
Flat/maisonette/apartment	372	17.7	12.6	8.6
Other	0	0.0	0.2	0.3

Table KS401EW

Marital status

Marital status	Number of people	% of people aged 16+		
		This Area	High Peak	Derbyshire
Single	1,430	41.3	30.9	29.3
Married	1,328	38.3	49.1	50.5
Same-sex civil partnership	3	0.1	0.2	0.2
Separated	116	3.3	2.4	2.4
Divorced	363	10.5	9.9	9.9
Widowed / surviving partner	226	6.5	7.4	7.7

Table KS103EW

Health

Health	Number of people	% of total population		
		This Area	High Peak	Derbyshire
People whose day-to-day activities are limited	766	18.4	18.1	20.4
People with 'bad' general health	248	5.9	5.2	6.2
People providing unpaid care	428	10.3	11.3	12.1

Table KS301EW

2011 Census: Summary Profile

Howard Town

Area type and code
Ward (E05003403)

Ethnicity

Ethnic group	Number of people	% of total population		
		This Area	High Peak	Derbyshire
White British	3,938	94.4	95.9	95.8
Black and Minority Ethnic (BME)	233	5.6	4.1	4.2
White Other	81	1.9	2.0	1.7
Mixed/multiple ethnic groups	74	1.8	1.0	0.9
Asian/Asian British	54	1.3	0.8	1.1
Black/African/Caribbean/Black British	13	0.3	0.2	0.4
Other ethnic group	11	0.3	0.1	0.1

Table KS201EW

Religion

Religion	Number of people	% of total population		
		This Area	High Peak	Derbyshire
Christian	2,482	59.5	64.1	63.6
Buddhist	19	0.5	0.3	0.2
Hindu	4	0.1	0.1	0.2
Jewish	0	0.0	0.0	0.0
Muslim	17	0.4	0.2	0.3
Sikh	0	0.0	0.0	0.3
Other religions	22	0.5	0.4	0.4
No religion	1,366	32.7	27.6	28.0
Not stated	261	6.3	7.2	7.0

Table KS209EW

Migration

Country of birth by year of arrival in the UK	Number of people	% of total residents		
		This Area	High Peak	Derbyshire
From within the UK total	4,001	95.9	96.4	96.7
From outside the UK total	170	4.1	3.6	3.3
<i>of which</i>				
- Ireland	38	0.9	0.5	0.3
- Other EU country	2	0.0	0.8	0.9
- European (Non-EU country)	45	1.1	0.2	0.1
- Other parts of the world	85	2.0	1.7	1.6

Table LC2804EW

Length of residence in the UK	Number of people	% of total residents		
		This Area	High Peak	Derbyshire
Less than 2 years	11	0.3	0.2	0.3
2 years or more but less than 5 years	15	0.4	0.5	0.5
5 years or more but less than 10 years	30	0.7	0.6	0.6
10 years or more	114	2.7	2.2	2.0
Born in the UK	4,001	95.9	96.4	96.7

Table QS803EW

2011 Census: Summary Profile

Howard Town

Area type and code
Ward (E05003403)

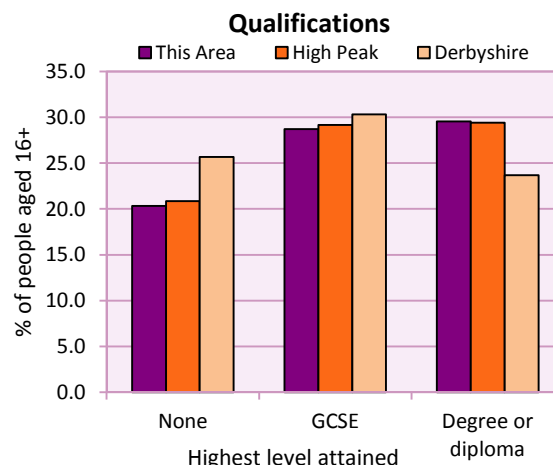
Education

Full-time students	Number	% of population in age group		
		This Area	High Peak	Derbyshire
aged 16-17	69	87.3	88.0	86.3
aged 18-74	94	3.0	3.9	2.9

Table KS501EW

Qualifications	People (aged 16+)	% of all people aged 16+		
		This Area	High Peak	Derbyshire
No qualifications	705	20.3	20.9	25.7
Highest level attained				
GCSE	995	28.7	29.2	30.3
Degree or diploma	1,024	29.5	29.4	23.7

Table KS501EW



Workforce

Economic activity	People aged 16-74								
	This Area			High Peak			Derbyshire		
	Males	Females	All	Males	Females	All	Males	Females	All
Economically active									
- number	1,253	1,151	2,404	25,645	22,915	48,560	211,349	185,704	397,053
- rate (%)	77.1	72.7	74.9	76.3	67.8	72.1	74.8	65.1	69.9
All unemployed									
- number	115	63	178	1,563	1,013	2,576	13,541	8,665	22,206
- rate (%)	7.1	4.0	5.5	4.7	3.0	3.8	4.8	3.0	3.9
Economically inactive									
- number	373	432	805	7,965	10,864	18,829	71,240	99,505	170,745
- rate (%)	22.9	27.3	25.1	23.7	32.2	27.9	25.2	34.9	30.1

Table KS601EW KS602EW and KS603EW

Hours worked	% of people aged 16-74 in employment					
	Full time (more than 30 hrs)			Part time (30 hrs or less)		
	This Area	High Peak	Derbyshire	This Area	High Peak	Derbyshire
All	73.5	70.0	70.3	26.5	30.0	29.7
Males	87.2	85.6	86.5	12.8	14.4	13.5
Females	59.2	52.8	52.1	40.8	47.2	47.9

Table KS604EW

People travelling to work	This Area	High Peak	Derbyshire
- works mainly at or from home %	10.1	12.2	10.5
- by car or van %	49.5	59.4	65.6
- by public transport or taxi %	15.6	8.4	6.6
- by all other methods of travel %	24.9	20.0	17.4
Average distance travelled km	15.3	15.7	15.2

Table LC7101EW and QS702EW

2011 Census: Summary Profile

Howard Town

Area type and code
Ward (E05003403)

Workforce (continued)

Industry (people aged 16-74 in employment)	Number of workers	% of people aged 16-74 in employment		
		This Area	High Peak	Derbyshire
Agriculture, forestry and fishing	2	0.1	1.0	1.0
Mining, quarrying and utilities	39	1.8	2.0	1.9
Manufacturing	257	11.6	13.3	14.9
Construction	161	7.3	7.6	8.5
Wholesale and retail	326	14.8	14.4	16.6
Business services	595	26.9	27.4	25.1
Public services	715	32.4	29.6	27.5
Other services	113	5.1	4.7	4.5

Chart category

Other

Other

Manufacturing

Other

Services

Services

Services

Services

Table KS605EW

Occupation (people aged 16-74 in employment)	Number of workers	% of people aged 16-74 in employment		
		This Area	High Peak	Derbyshire
Managers, directors & senior officials	216	9.8	11.3	10.9
Professional	420	19.0	17.8	15.1
Associate professional & technical	296	13.4	11.7	11.0
Administrative & secretarial	223	10.1	10.1	10.9
Skilled trades	248	11.2	12.6	13.3
Caring, leisure & other services	240	10.9	10.0	9.6
Sales & customer service	167	7.6	7.0	7.9
Process, plant & machine operatives	170	7.7	9.0	9.6
Elementary occupations	228	10.3	10.4	11.7

Chart category

Managerial & professional

Managerial & professional

Managerial & professional

Other non-manual

Manual

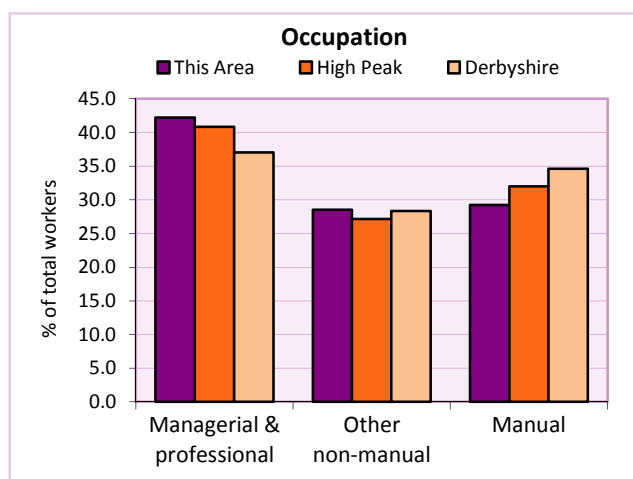
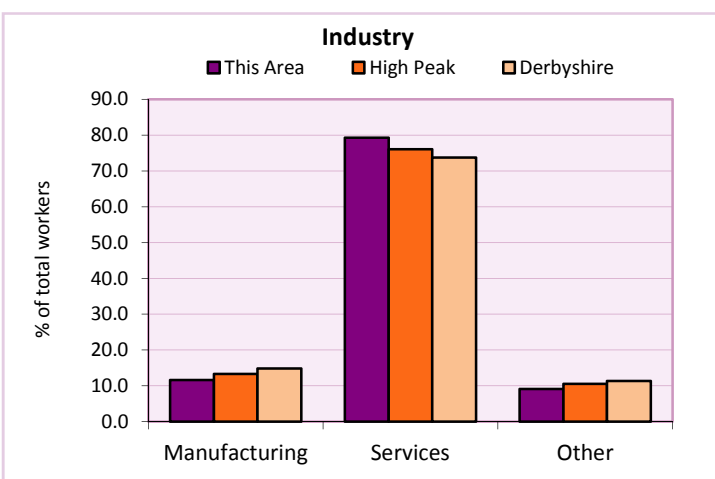
Other non-manual

Other non-manual

Manual

Manual

Table KS608EW



For an **explanation** of the various terms used in these tables, please see the accompanying **Glossary**.

Extension profiles covering the following topics in more detail will also be available:

Population, Economic Activity, Equalities, Health, Households, and Housing.

Profiles in Adobe Acrobat (pdf) format can be downloaded from the Derbyshire Observatory web site, which also provides interactive maps and charts - <http://observatory.derbyshire.gov.uk>

Please note that figures vary across the Census Profiles as different denominators are used. 2011 Census Table reference numbers are provided beneath each individual table in the Census Profiles should you require further information.

Version: 6.31