

Old Glossop

Area type and code
Ward (E05003407)

Population

Population change since 2001

Change in numbers	% change		
	This Area	High Peak	Derbyshire
+741	+18.5	+1.6	+4.8

2011 Census Table KS101EW and 2001 Census Table S001

Residents

	Number
Total resident population	4,748
- in households	4,748
- in communal establishments	0

Table KS101EW

Density of population

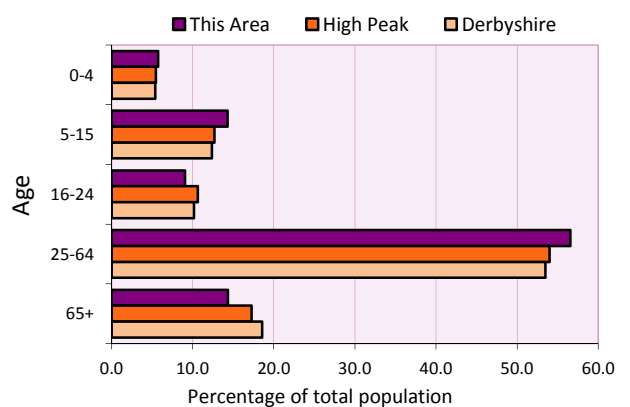
Area (hectares)	Persons per hectare		
	This Area	High Peak	Derbyshire
185	25.7	1.7	3.0

Table KS101EW

Age structure	Number of people	% of total population		
		This Area	High Peak	Derbyshire
0-4 years	273	5.7	5.5	5.4
5-15 years	679	14.3	12.7	12.4
16-24 years	430	9.1	10.6	10.2
25-64 years	2,686	56.6	54.0	53.5
65 and over	680	14.3	17.2	18.6

Table KS102EW

Age structure of the population



Households

Total households

Number	Average household size (persons)		
	This Area	High Peak	Derbyshire
1,950	2.43	2.33	2.31

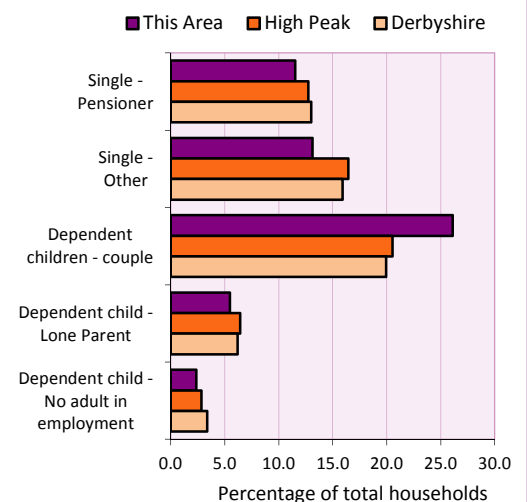
Table KS101EW and KS403EW

Household types

Number	% of total households			
	This Area	High Peak	Derbyshire	
Single person households	481	24.7	29.2	28.9
Pensioner	225	11.5	12.7	13.0
Other	256	13.1	16.4	15.9
Households with dependent children				
All	647	33.2	28.4	27.6
Couple	509	26.1	20.5	19.9
Lone parent	107	5.5	6.4	6.2
No adult in employment	46	2.4	2.9	3.4
One person with a long-term health problem - or disability	81	4.2	4.4	4.5

Table KS105EW and KS106EW

Household types



Car/van ownership

Number of households	% of total households			
	This Area	High Peak	Derbyshire	
No car or van	323	16.6	19.6	20.1

Table KS404EW

2011 Census: Summary Profile

Old Glossop

Area type and code
Ward (E05003407)

Accommodation

Tenure	Number of households	% of total households		
		This Area	High Peak	Derbyshire
Owner-occupied	1,556	79.8	72.6	71.4
Rented from council/housing association	176	9.0	12.7	15.3
Private/other rented	195	10.0	13.4	12.0
Living rent free	23	1.2	1.2	1.3

Table KS402EW

Amenities	Number of households	% of total households		
		This Area	High Peak	Derbyshire
Overcrowded households	60	3.1	4.8	3.7
Households without central heating	41	2.1	2.3	2.0

Table KS403EW

Total household spaces	2,018
-------------------------------	--------------

Table KS401EW

Type of accommodation	Number of household spaces	% of total household spaces		
		This Area	High Peak	Derbyshire
Detached	749	37.1	23.5	31.8
Semi-detached	517	25.6	29.2	38.7
Terraced	550	27.3	34.4	20.6
Flat/maisonette/apartment	202	10.0	12.6	8.6
Other	0	0.0	0.2	0.3

Table KS401EW

Marital status

Marital status	Number of people	% of people aged 16+		
		This Area	High Peak	Derbyshire
Single	981	25.8	30.9	29.3
Married	2,132	56.2	49.1	50.5
Same-sex civil partnership	13	0.3	0.2	0.2
Separated	82	2.2	2.4	2.4
Divorced	359	9.5	9.9	9.9
Widowed / surviving partner	229	6.0	7.4	7.7

Table KS103EW

Health

Health	Number of people	% of total population		
		This Area	High Peak	Derbyshire
People whose day-to-day activities are limited	697	14.7	18.1	20.4
People with 'bad' general health	168	3.5	5.2	6.2
People providing unpaid care	500	10.5	11.3	12.1

Table KS301EW

2011 Census: Summary Profile

Old Glossop

Area type and code
Ward (E05003407)

Ethnicity

Ethnic group	Number of people	% of total population		
		This Area	High Peak	Derbyshire
White British	4,566	96.2	95.9	95.8
Black and Minority Ethnic (BME)	182	3.8	4.1	4.2
White Other	92	1.9	2.0	1.7
Mixed/multiple ethnic groups	39	0.8	1.0	0.9
Asian/Asian British	30	0.6	0.8	1.1
Black/African/Caribbean/Black British	15	0.3	0.2	0.4
Other ethnic group	6	0.1	0.1	0.1

Table KS201EW

Religion

Religion	Number of people	% of total population		
		This Area	High Peak	Derbyshire
Christian	3,220	67.8	64.1	63.6
Buddhist	7	0.1	0.3	0.2
Hindu	4	0.1	0.1	0.2
Jewish	0	0.0	0.0	0.0
Muslim	2	0.0	0.2	0.3
Sikh	0	0.0	0.0	0.3
Other religions	16	0.3	0.4	0.4
No religion	1,199	25.3	27.6	28.0
Not stated	300	6.3	7.2	7.0

Table KS209EW

Migration

Country of birth by year of arrival in the UK	Number of people	% of total residents		
		This Area	High Peak	Derbyshire
From within the UK total	4,577	96.4	96.4	96.7
From outside the UK total	171	3.6	3.6	3.3
<i>of which</i>				
- Ireland	29	0.6	0.5	0.3
- Other EU country	24	0.5	0.8	0.9
- European (Non-EU country)	35	0.7	0.2	0.1
- Other parts of the world	83	1.7	1.7	1.6

Table LC2804EW

Length of residence in the UK	Number of people	% of total residents		
		This Area	High Peak	Derbyshire
Less than 2 years	12	0.3	0.2	0.3
2 years or more but less than 5 years	21	0.4	0.5	0.5
5 years or more but less than 10 years	30	0.6	0.6	0.6
10 years or more	108	2.3	2.2	2.0
Born in the UK	4,577	96.4	96.4	96.7

Table QS803EW

2011 Census: Summary Profile

Old Glossop

Area type and code
Ward (E05003407)

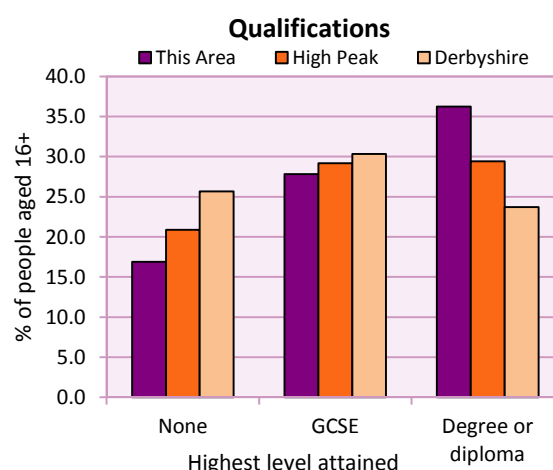
Education

Full-time students	Number	% of population in age group		
		This Area	High Peak	Derbyshire
aged 16-17	123	95.3	88.0	86.3
aged 18-74	131	3.9	3.9	2.9

Table KS501EW

Qualifications	People (aged 16+)	% of all people aged 16+		
		This Area	High Peak	Derbyshire
No qualifications	641	16.9	20.9	25.7
Highest level attained				
GCSE	1,056	27.8	29.2	30.3
Degree or diploma	1,376	36.2	29.4	23.7

Table KS501EW



Workforce

Economic activity	People aged 16-74								
	This Area			High Peak			Derbyshire		
	Males	Females	All	Males	Females	All	Males	Females	All
Economically active									
- number	1,326	1,239	2,565	25,645	22,915	48,560	211,349	185,704	397,053
- rate (%)	76.9	69.5	73.1	76.3	67.8	72.1	74.8	65.1	69.9
All unemployed									
- number	59	47	106	1,563	1,013	2,576	13,541	8,665	22,206
- rate (%)	3.4	2.6	3.0	4.7	3.0	3.8	4.8	3.0	3.9
Economically inactive									
- number	398	544	942	7,965	10,864	18,829	71,240	99,505	170,745
- rate (%)	23.1	30.5	26.9	23.7	32.2	27.9	25.2	34.9	30.1

Table KS601EW KS602EW and KS603EW

Hours worked	% of people aged 16-74 in employment					
	Full time (more than 30 hrs)			Part time (30 hrs or less)		
	This Area	High Peak	Derbyshire	This Area	High Peak	Derbyshire
All	73.2	70.0	70.3	26.8	30.0	29.7
Males	87.8	85.6	86.5	12.2	14.4	13.5
Females	57.8	52.8	52.1	42.2	47.2	47.9

Table KS604EW

People travelling to work	This Area	High Peak	Derbyshire
- works mainly at or from home %	12.5	12.2	10.5
- by car or van %	62.5	59.4	65.6
- by public transport or taxi %	11.3	8.4	6.6
- by all other methods of travel %	13.7	20.0	17.4
Average distance travelled km	18.1	15.7	15.2

Table LC7101EW and QS702EW

2011 Census: Summary Profile

Old Glossop

Area type and code
Ward (E05003407)

Workforce (continued)

Industry (people aged 16-74 in employment)	Number of workers	% of people aged 16-74 in employment		
		This Area	High Peak	Derbyshire
Agriculture, forestry and fishing	3	0.1	1.0	1.0
Mining, quarrying and utilities	30	1.2	2.0	1.9
Manufacturing	252	10.3	13.3	14.9
Construction	196	8.0	7.6	8.5
Wholesale and retail	321	13.2	14.4	16.6
Business services	727	29.8	27.4	25.1
Public services	795	32.6	29.6	27.5
Other services	116	4.8	4.7	4.5

Chart category

Other

Other

Manufacturing

Other

Services

Services

Services

Services

Table KS605EW

Occupation (people aged 16-74 in employment)	Number of workers	% of people aged 16-74 in employment		
		This Area	High Peak	Derbyshire
Managers, directors & senior officials	361	14.8	11.3	10.9
Professional	546	22.4	17.8	15.1
Associate professional & technical	356	14.6	11.7	11.0
Administrative & secretarial	278	11.4	10.1	10.9
Skilled trades	228	9.3	12.6	13.3
Caring, leisure & other services	227	9.3	10.0	9.6
Sales & customer service	150	6.1	7.0	7.9
Process, plant & machine operatives	130	5.3	9.0	9.6
Elementary occupations	164	6.7	10.4	11.7

Chart category

Managerial & professional

Managerial & professional

Managerial & professional

Other non-manual

Manual

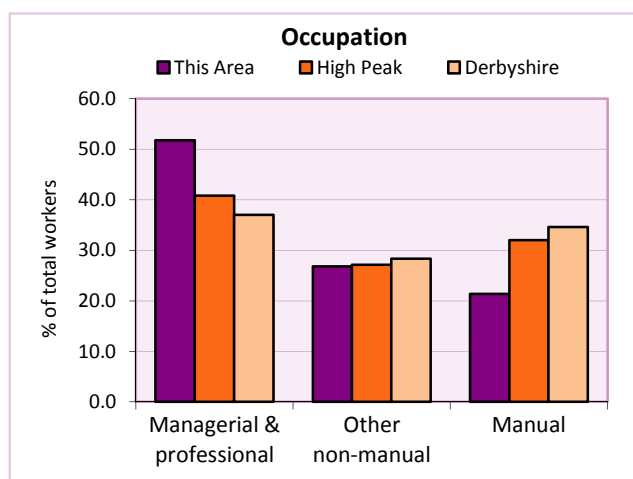
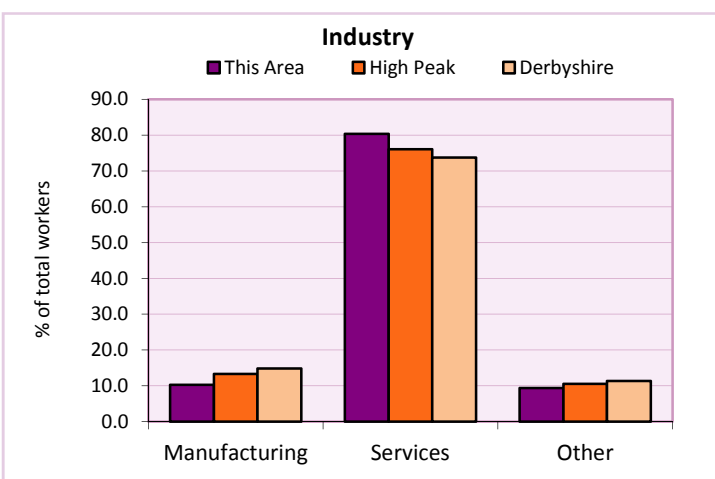
Other non-manual

Other non-manual

Manual

Manual

Table KS608EW



For an **explanation** of the various terms used in these tables, please see the accompanying **Glossary**.

Extension profiles covering the following topics in more detail will also be available:

Population, Economic Activity, Equalities, Health, Households, and Housing.

Profiles in Adobe Acrobat (pdf) format can be downloaded from the Derbyshire Observatory web site, which also provides interactive maps and charts - <http://observatory.derbyshire.gov.uk>

Please note that figures vary across the Census Profiles as different denominators are used. 2011 Census Table reference numbers are provided beneath each individual table in the Census Profiles should you require further information.

Version: 6.31