

## Padfield

Area type and code  
Ward (E05003408)

### Population

#### Population change since 2001

Change in numbers	% change		
	This Area	High Peak	Derbyshire
+180	+6.9	+1.6	+4.8

2011 Census Table KS101EW and 2001 Census Table S001

#### Residents

	Number
Total resident population	2,796
- in households	2,794
- in communal establishments	2

Table KS101EW

#### Density of population

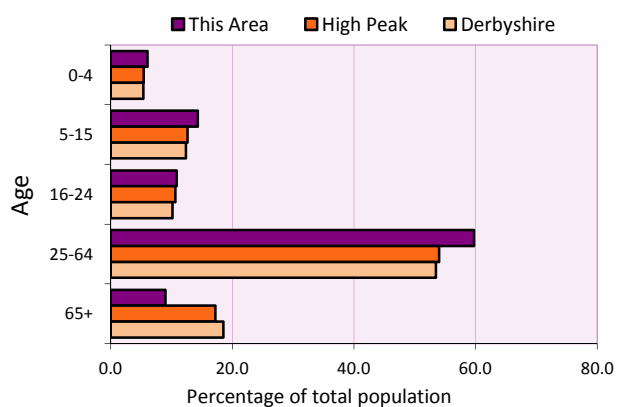
Area (hectares)	Persons per hectare		
	This Area	High Peak	Derbyshire
175	15.9	1.7	3.0

Table KS101EW

Age structure	Number of people	% of total population		
		This Area	High Peak	Derbyshire
0-4 years	170	6.1	5.5	5.4
5-15 years	400	14.3	12.7	12.4
16-24 years	304	10.9	10.6	10.2
25-64 years	1,670	59.7	54.0	53.5
65 and over	252	9.0	17.2	18.6

Table KS102EW

#### Age structure of the population



### Households

#### Total households

Number	Average household size (persons)		
	This Area	High Peak	Derbyshire
1,184	2.36	2.33	2.31

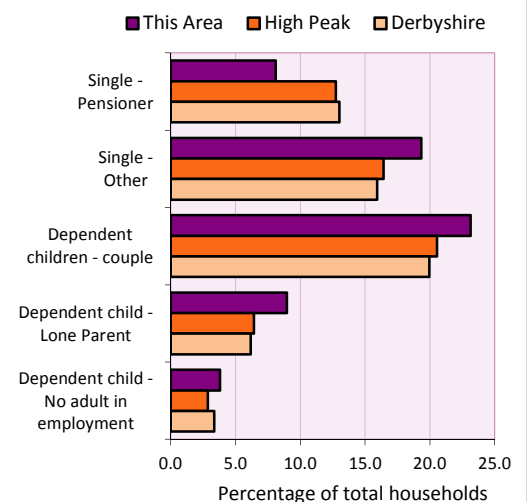
Table KS101EW and KS403EW

#### Household types

Household types	Number	% of total households		
		This Area	High Peak	Derbyshire
Single person households	325	27.4	29.2	28.9
Pensioner	96	8.1	12.7	13.0
Other	229	19.3	16.4	15.9
Households with dependent children				
All	400	33.8	28.4	27.6
Couple	274	23.1	20.5	19.9
Lone parent	106	9.0	6.4	6.2
No adult in employment	45	3.8	2.9	3.4
One person with a long-term health problem - or disability	70	5.9	4.4	4.5

Table KS105EW and KS106EW

#### Household types



#### Car/van ownership

Number of households	% of total households			
	This Area	High Peak	Derbyshire	
No car or van	210	17.7	19.6	20.1

Table KS404EW

# 2011 Census: Summary Profile

Padfield

Area type and code  
Ward (E05003408)

## Accommodation

Tenure	Number of households	% of total households		
		This Area	High Peak	Derbyshire
Owner-occupied	835	70.5	72.6	71.4
Rented from council/housing association	116	9.8	12.7	15.3
Private/other rented	227	19.2	13.4	12.0
Living rent free	6	0.5	1.2	1.3

Table KS402EW

Amenities	Number of households	% of total households		
		This Area	High Peak	Derbyshire
Overcrowded households	79	6.7	4.8	3.7
Households without central heating	26	2.2	2.3	2.0

Table KS403EW

<b>Total household spaces</b>	<b>1,231</b>
-------------------------------	--------------

Table KS401EW

Type of accommodation	Number of household spaces	% of total household spaces		
		This Area	High Peak	Derbyshire
Detached	188	15.3	23.5	31.8
Semi-detached	333	27.1	29.2	38.7
Terraced	603	49.0	34.4	20.6
Flat/maisonette/apartment	107	8.7	12.6	8.6
Other	0	0.0	0.2	0.3

Table KS401EW

## Marital status

Marital status	Number of people	% of people aged 16+		
		This Area	High Peak	Derbyshire
Single	821	36.9	30.9	29.3
Married	955	42.9	49.1	50.5
Same-sex civil partnership	4	0.2	0.2	0.2
Separated	76	3.4	2.4	2.4
Divorced	262	11.8	9.9	9.9
Widowed / surviving partner	108	4.9	7.4	7.7

Table KS103EW

## Health

Health	Number of people	% of total population		
		This Area	High Peak	Derbyshire
People whose day-to-day activities are limited	414	14.8	18.1	20.4
People with 'bad' general health	128	4.6	5.2	6.2
People providing unpaid care	271	9.7	11.3	12.1

Table KS301EW

# 2011 Census: Summary Profile

Padfield

Area type and code  
Ward (E05003408)

## Ethnicity

Ethnic group	Number of people	% of total population		
		This Area	High Peak	Derbyshire
White British	2,615	93.5	95.9	95.8
Black and Minority Ethnic (BME)	181	6.5	4.1	4.2
White Other	80	2.9	2.0	1.7
Mixed/multiple ethnic groups	73	2.6	1.0	0.9
Asian/Asian British	20	0.7	0.8	1.1
Black/African/Caribbean/Black British	4	0.1	0.2	0.4
Other ethnic group	4	0.1	0.1	0.1

Table KS201EW

## Religion

Religion	Number of people	% of total population		
		This Area	High Peak	Derbyshire
Christian	1,736	62.1	64.1	63.6
Buddhist	6	0.2	0.3	0.2
Hindu	0	0.0	0.1	0.2
Jewish	2	0.1	0.0	0.0
Muslim	9	0.3	0.2	0.3
Sikh	0	0.0	0.0	0.3
Other religions	10	0.4	0.4	0.4
No religion	814	29.1	27.6	28.0
Not stated	219	7.8	7.2	7.0

Table KS209EW

## Migration

Country of birth by year of arrival in the UK	Number of people	% of total residents		
		This Area	High Peak	Derbyshire
From within the UK total	2,677	95.7	96.4	96.7
From outside the UK total	119	4.3	3.6	3.3
<i>of which</i>				
- Ireland	21	0.8	0.5	0.3
- Other EU country	12	0.4	0.8	0.9
- European (Non-EU country)	34	1.2	0.2	0.1
- Other parts of the world	52	1.9	1.7	1.6

Table LC2804EW

Length of residence in the UK	Number of people	% of total residents		
		This Area	High Peak	Derbyshire
Less than 2 years	7	0.3	0.2	0.3
2 years or more but less than 5 years	15	0.5	0.5	0.5
5 years or more but less than 10 years	14	0.5	0.6	0.6
10 years or more	83	3.0	2.2	2.0
Born in the UK	2,677	95.7	96.4	96.7

Table QS803EW

# 2011 Census: Summary Profile

Padfield

Area type and code  
Ward (E05003408)

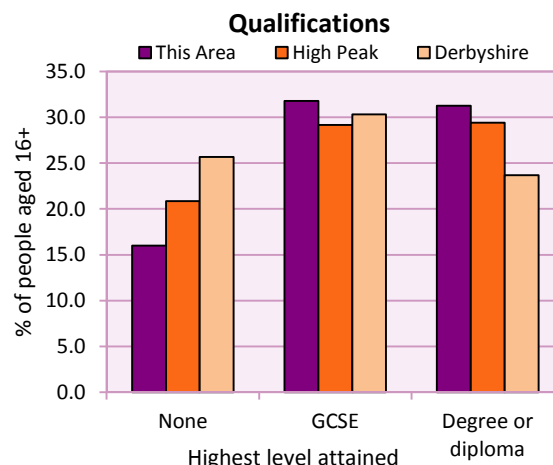
## Education

Full-time students	Number	% of population in age group		
		This Area	High Peak	Derbyshire
aged 16-17	65	89.0	88.0	86.3
aged 18-74	78	3.8	3.9	2.9

Table KS501EW

Qualifications	People (aged 16+)	% of all people aged 16+		
		This Area	High Peak	Derbyshire
No qualifications	356	16.0	20.9	25.7
Highest level attained				
GCSE	707	31.8	29.2	30.3
Degree or diploma	696	31.3	29.4	23.7

Table KS501EW



## Workforce

Economic activity	People aged 16-74								
	This Area			High Peak			Derbyshire		
	Males	Females	All	Males	Females	All	Males	Females	All
Economically active									
- number	858	807	1,665	25,645	22,915	48,560	211,349	185,704	397,053
- rate (%)	81.9	74.9	78.3	76.3	67.8	72.1	74.8	65.1	69.9
All unemployed									
- number	70	42	112	1,563	1,013	2,576	13,541	8,665	22,206
- rate (%)	6.7	3.9	5.3	4.7	3.0	3.8	4.8	3.0	3.9
Economically inactive									
- number	190	271	461	7,965	10,864	18,829	71,240	99,505	170,745
- rate (%)	18.1	25.1	21.7	23.7	32.2	27.9	25.2	34.9	30.1

Table KS601EW KS602EW and KS603EW

Hours worked	% of people aged 16-74 in employment					
	Full time (more than 30 hrs)			Part time (30 hrs or less)		
	This Area	High Peak	Derbyshire	This Area	High Peak	Derbyshire
All	74.6	70.0	70.3	25.4	30.0	29.7
Males	88.9	85.6	86.5	11.1	14.4	13.5
Females	59.9	52.8	52.1	40.1	47.2	47.9

Table KS604EW

People travelling to work	This Area	High Peak	Derbyshire
- works mainly at or from home %	9.7	12.2	10.5
- by car or van %	62.4	59.4	65.6
- by public transport or taxi %	12.4	8.4	6.6
- by all other methods of travel %	15.5	20.0	17.4
Average distance travelled km	17.3	15.7	15.2

Table LC7101EW and QS702EW

# 2011 Census: Summary Profile

Padfield

Area type and code  
Ward (E05003408)

## Workforce (continued)

Industry (people aged 16-74 in employment)	Number of workers	% of people aged 16-74 in employment		
		This Area	High Peak	Derbyshire
Agriculture, forestry and fishing	3	0.2	1.0	1.0
Mining, quarrying and utilities	24	1.6	2.0	1.9
Manufacturing	182	11.8	13.3	14.9
Construction	120	7.8	7.6	8.5
Wholesale and retail	222	14.4	14.4	16.6
Business services	415	26.8	27.4	25.1
Public services	520	33.6	29.6	27.5
Other services	61	3.9	4.7	4.5

### Chart category

Other

Other

Manufacturing

Other

Services

Services

Services

Services

Table KS605EW

Occupation (people aged 16-74 in employment)	Number of workers	% of people aged 16-74 in employment		
		This Area	High Peak	Derbyshire
Managers, directors & senior officials	172	11.1	11.3	10.9
Professional	325	21.0	17.8	15.1
Associate professional & technical	217	14.0	11.7	11.0
Administrative & secretarial	176	11.4	10.1	10.9
Skilled trades	159	10.3	12.6	13.3
Caring, leisure & other services	159	10.3	10.0	9.6
Sales & customer service	107	6.9	7.0	7.9
Process, plant & machine operatives	108	7.0	9.0	9.6
Elementary occupations	124	8.0	10.4	11.7

### Chart category

Managerial & professional

Managerial & professional

Managerial & professional

Other non-manual

Manual

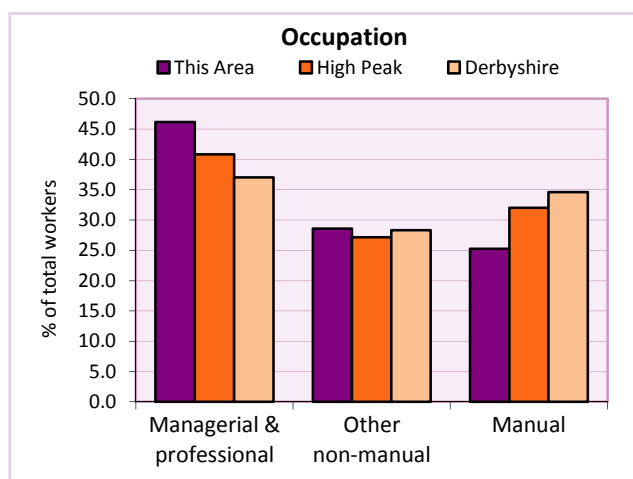
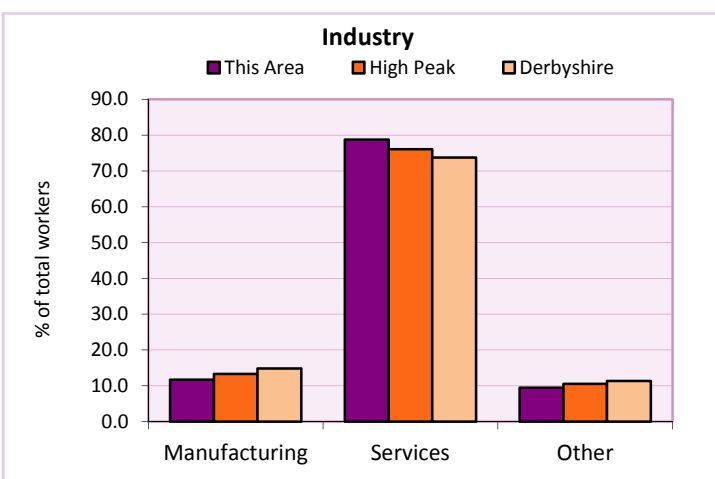
Other non-manual

Other non-manual

Manual

Manual

Table KS608EW



For an **explanation** of the various terms used in these tables, please see the accompanying **Glossary**.

**Extension profiles** covering the following topics in more detail will also be available:

**Population, Economic Activity, Equalities, Health, Households, and Housing.**

**Profiles** in Adobe Acrobat (pdf) format can be downloaded from the Derbyshire Observatory web site, which also provides interactive maps and charts - <http://observatory.derbyshire.gov.uk>

**Please note that figures vary across the Census Profiles as different denominators are used. 2011 Census Table reference numbers are provided beneath each individual table in the Census Profiles should you require further information.**

Version: 6.31