

Sett

Area type and code
Ward (E05003410)

Population

Population change since 2001

Change in numbers	% change		
	This Area	High Peak	Derbyshire
-168	-7.7	+1.6	+4.8

2011 Census Table KS101EW and 2001 Census Table S001

Residents

	Number
Total resident population	2,006
- in households	1,968
- in communal establishments	38

Table KS101EW

Density of population

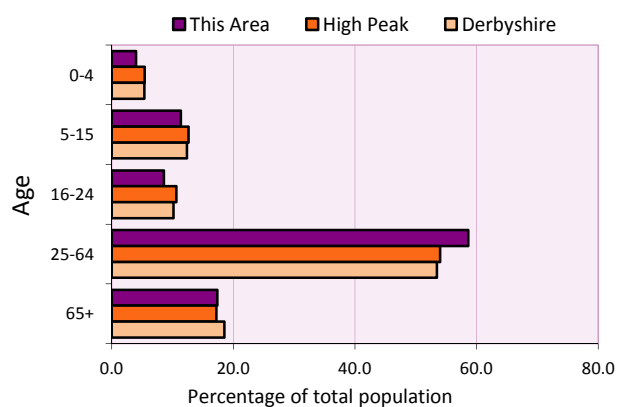
Area (hectares)	Persons per hectare		
	This Area	High Peak	Derbyshire
1,647	1.2	1.7	3.0

Table KS101EW

Age structure	Number of people	% of total population		
		This Area	High Peak	Derbyshire
0-4 years	81	4.0	5.5	5.4
5-15 years	228	11.4	12.7	12.4
16-24 years	172	8.6	10.6	10.2
25-64 years	1,176	58.6	54.0	53.5
65 and over	349	17.4	17.2	18.6

Table KS102EW

Age structure of the population



Households

Total households

Number	Average household size (persons)		
	This Area	High Peak	Derbyshire
838	2.39	2.33	2.31

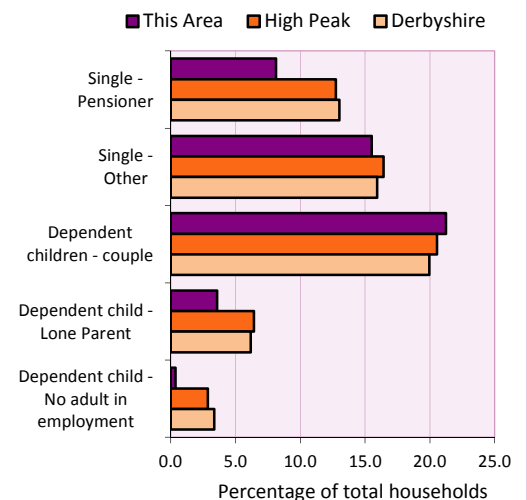
Table KS101EW and KS403EW

Household types

Household type	Number	% of total households		
		This Area	High Peak	Derbyshire
Single person households	198	23.6	29.2	28.9
Pensioner	68	8.1	12.7	13.0
Other	130	15.5	16.4	15.9
Households with dependent children				
All	217	25.9	28.4	27.6
Couple	178	21.2	20.5	19.9
Lone parent	30	3.6	6.4	6.2
No adult in employment	3	0.4	2.9	3.4
One person with a long-term health problem - or disability	45	5.4	4.4	4.5

Table KS105EW and KS106EW

Household types



Car/van ownership

Number of households	% of total households		
	This Area	High Peak	Derbyshire
No car or van	6.9	19.6	20.1

Table KS404EW

2011 Census: Summary Profile

Sett

Area type and code
Ward (E05003410)

Accommodation

Tenure	Number of households	% of total households		
		This Area	High Peak	Derbyshire
Owner-occupied	742	88.5	72.6	71.4
Rented from council/housing association	9	1.1	12.7	15.3
Private/other rented	83	9.9	13.4	12.0
Living rent free	4	0.5	1.2	1.3

Table KS402EW

Amenities	Number of households	% of total households		
		This Area	High Peak	Derbyshire
Overcrowded households	13	1.6	4.8	3.7
Households without central heating	23	2.7	2.3	2.0

Table KS403EW

Total household spaces	885
-------------------------------	------------

Table KS401EW

Type of accommodation	Number of household spaces	% of total household spaces		
		This Area	High Peak	Derbyshire
Detached	271	30.6	23.5	31.8
Semi-detached	228	25.8	29.2	38.7
Terraced	345	39.0	34.4	20.6
Flat/maisonette/apartment	40	4.5	12.6	8.6
Other	1	0.1	0.2	0.3

Table KS401EW

Marital status

Marital status	Number of people	% of people aged 16+		
		This Area	High Peak	Derbyshire
Single	439	25.9	30.9	29.3
Married	930	54.8	49.1	50.5
Same-sex civil partnership	10	0.6	0.2	0.2
Separated	37	2.2	2.4	2.4
Divorced	180	10.6	9.9	9.9
Widowed / surviving partner	101	6.0	7.4	7.7

Table KS103EW

Health

Health	Number of people	% of total population		
		This Area	High Peak	Derbyshire
People whose day-to-day activities are limited	323	16.1	18.1	20.4
People with 'bad' general health	99	4.9	5.2	6.2
People providing unpaid care	294	14.7	11.3	12.1

Table KS301EW

2011 Census: Summary Profile

Sett

Area type and code
Ward (E05003410)

Ethnicity

Ethnic group	Number of people	% of total population		
		This Area	High Peak	Derbyshire
White British	1,940	96.7	95.9	95.8
Black and Minority Ethnic (BME)	66	3.3	4.1	4.2
White Other	29	1.4	2.0	1.7
Mixed/multiple ethnic groups	25	1.2	1.0	0.9
Asian/Asian British	9	0.4	0.8	1.1
Black/African/Caribbean/Black British	2	0.1	0.2	0.4
Other ethnic group	1	0.0	0.1	0.1

Table KS201EW

Religion

Religion	Number of people	% of total population		
		This Area	High Peak	Derbyshire
Christian	1,198	59.7	64.1	63.6
Buddhist	10	0.5	0.3	0.2
Hindu	0	0.0	0.1	0.2
Jewish	2	0.1	0.0	0.0
Muslim	3	0.1	0.2	0.3
Sikh	0	0.0	0.0	0.3
Other religions	15	0.7	0.4	0.4
No religion	625	31.2	27.6	28.0
Not stated	153	7.6	7.2	7.0

Table KS209EW

Migration

Country of birth by year of arrival in the UK	Number of people	% of total residents		
		This Area	High Peak	Derbyshire
From within the UK total	1,956	97.5	96.4	96.7
From outside the UK total	50	2.5	3.6	3.3
<i>of which</i>				
- Ireland	5	0.2	0.5	0.3
- Other EU country	12	0.6	0.8	0.9
- European (Non-EU country)	5	0.2	0.2	0.1
- Other parts of the world	28	1.4	1.7	1.6

Table LC2804EW

Length of residence in the UK	Number of people	% of total residents		
		This Area	High Peak	Derbyshire
Less than 2 years	2	0.1	0.2	0.3
2 years or more but less than 5 years	9	0.4	0.5	0.5
5 years or more but less than 10 years	8	0.4	0.6	0.6
10 years or more	31	1.5	2.2	2.0
Born in the UK	1,956	97.5	96.4	96.7

Table QS803EW

2011 Census: Summary Profile

Sett

Area type and code
Ward (E05003410)

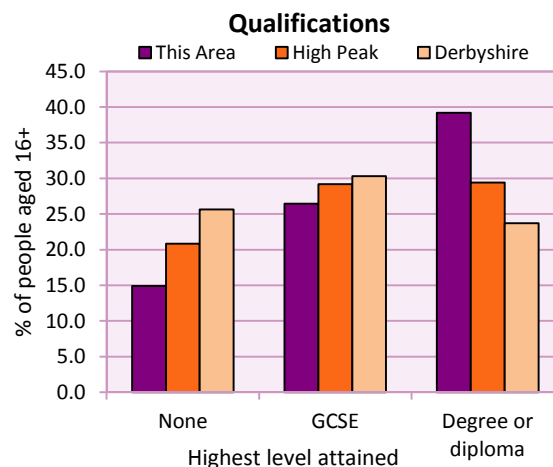
Education

Full-time students	Number	% of population in age group		
		This Area	High Peak	Derbyshire
aged 16-17	48	90.6	88.0	86.3
aged 18-74	37	2.4	3.9	2.9

Table KS501EW

Qualifications	People (aged 16+)	% of all people aged 16+		
		This Area	High Peak	Derbyshire
No qualifications	253	14.9	20.9	25.7
Highest level attained				
GCSE	449	26.5	29.2	30.3
Degree or diploma	665	39.2	29.4	23.7

Table KS501EW



Workforce

Economic activity	People aged 16-74								
	This Area			High Peak			Derbyshire		
	Males	Females	All	Males	Females	All	Males	Females	All
Economically active									
- number	612	565	1,177	25,645	22,915	48,560	211,349	185,704	397,053
- rate (%)	78.0	71.7	74.8	76.3	67.8	72.1	74.8	65.1	69.9
All unemployed									
- number	27	13	40	1,563	1,013	2,576	13,541	8,665	22,206
- rate (%)	3.4	1.6	2.5	4.7	3.0	3.8	4.8	3.0	3.9
Economically inactive									
- number	173	223	396	7,965	10,864	18,829	71,240	99,505	170,745
- rate (%)	22.0	28.3	25.2	23.7	32.2	27.9	25.2	34.9	30.1

Table KS601EW KS602EW and KS603EW

Hours worked	% of people aged 16-74 in employment					
	Full time (more than 30 hrs)			Part time (30 hrs or less)		
	This Area	High Peak	Derbyshire	This Area	High Peak	Derbyshire
All	68.7	70.0	70.3	31.3	30.0	29.7
Males	82.6	85.6	86.5	17.4	14.4	13.5
Females	54.1	52.8	52.1	45.9	47.2	47.9

Table KS604EW

People travelling to work	This Area	High Peak	Derbyshire
- works mainly at or from home %	16.8	12.2	10.5
- by car or van %	61.5	59.4	65.6
- by public transport or taxi %	9.0	8.4	6.6
- by all other methods of travel %	12.6	20.0	17.4
Average distance travelled km	17.1	15.7	15.2

Table LC7101EW and QS702EW

2011 Census: Summary Profile

Sett

Area type and code
Ward (E05003410)

Workforce (continued)

Industry (people aged 16-74 in employment)	Number of workers	% of people aged 16-74 in employment		
		This Area	High Peak	Derbyshire
Agriculture, forestry and fishing	27	2.4	1.0	1.0
Mining, quarrying and utilities	14	1.2	2.0	1.9
Manufacturing	121	10.7	13.3	14.9
Construction	111	9.8	7.6	8.5
Wholesale and retail	143	12.6	14.4	16.6
Business services	292	25.8	27.4	25.1
Public services	372	32.9	29.6	27.5
Other services	51	4.5	4.7	4.5

Chart category

Other

Other

Manufacturing

Other

Services

Services

Services

Services

Table KS605EW

Occupation (people aged 16-74 in employment)	Number of workers	% of people aged 16-74 in employment		
		This Area	High Peak	Derbyshire
Managers, directors & senior officials	147	13.0	11.3	10.9
Professional	261	23.1	17.8	15.1
Associate professional & technical	135	11.9	11.7	11.0
Administrative & secretarial	131	11.6	10.1	10.9
Skilled trades	166	14.7	12.6	13.3
Caring, leisure & other services	107	9.5	10.0	9.6
Sales & customer service	60	5.3	7.0	7.9
Process, plant & machine operatives	51	4.5	9.0	9.6
Elementary occupations	73	6.5	10.4	11.7

Chart category

Managerial & professional

Managerial & professional

Managerial & professional

Other non-manual

Manual

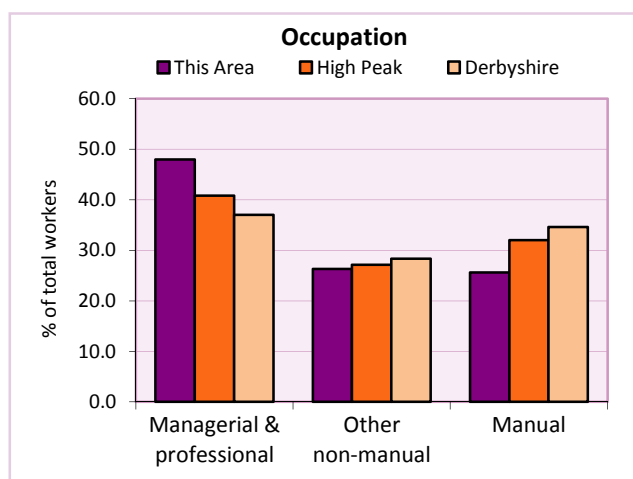
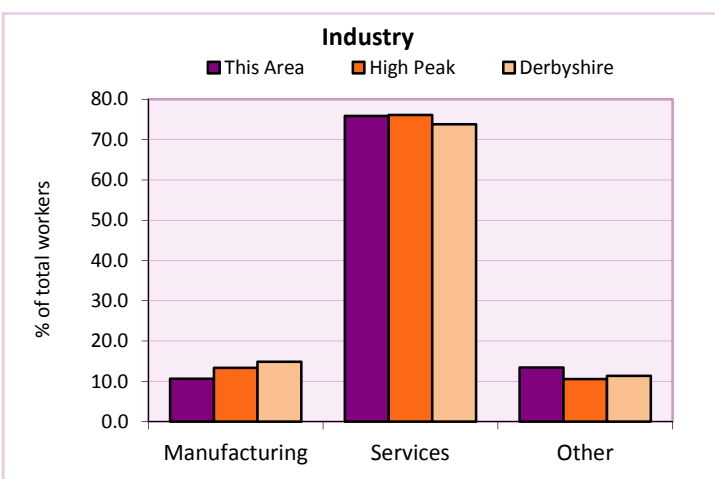
Other non-manual

Other non-manual

Manual

Manual

Table KS608EW



For an **explanation** of the various terms used in these tables, please see the accompanying **Glossary**.

Extension profiles covering the following topics in more detail will also be available:

Population, Economic Activity, Equalities, Health, Households, and Housing.

Profiles in Adobe Acrobat (pdf) format can be downloaded from the Derbyshire Observatory web site, which also provides interactive maps and charts - <http://observatory.derbyshire.gov.uk>

Please note that figures vary across the Census Profiles as different denominators are used. 2011 Census Table reference numbers are provided beneath each individual table in the Census Profiles should you require further information.

Version: 6.31