

Stone Bench

Area type and code
Ward (E05003412)

Population

Population change since 2001

Change in numbers	% change		
	This Area	High Peak	Derbyshire
+116	+2.6	+1.6	+4.8

2011 Census Table KS101EW and 2001 Census Table S001

Residents

	Number
Total resident population	4,573
- in households	4,573
- in communal establishments	0

Table KS101EW

Density of population

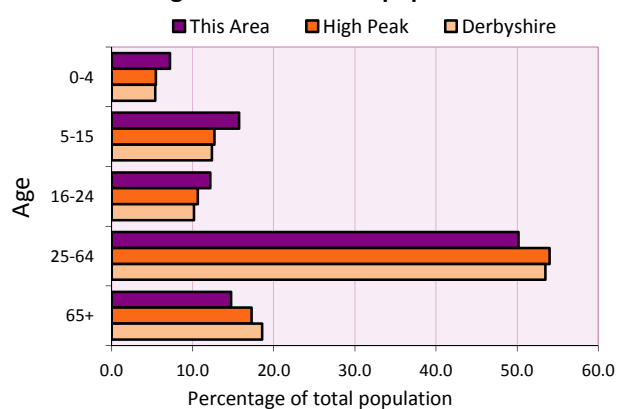
Area (hectares)	Persons per hectare		
	This Area	High Peak	Derbyshire
263	17.4	1.7	3.0

Table KS101EW

Age structure	Number of people	% of total population		
		This Area	High Peak	Derbyshire
0-4 years	329	7.2	5.5	5.4
5-15 years	719	15.7	12.7	12.4
16-24 years	557	12.2	10.6	10.2
25-64 years	2,294	50.2	54.0	53.5
65 and over	674	14.7	17.2	18.6

Table KS102EW

Age structure of the population



Households

Total households

Number	Average household size (persons)		
	This Area	High Peak	Derbyshire
1,866	2.45	2.33	2.31

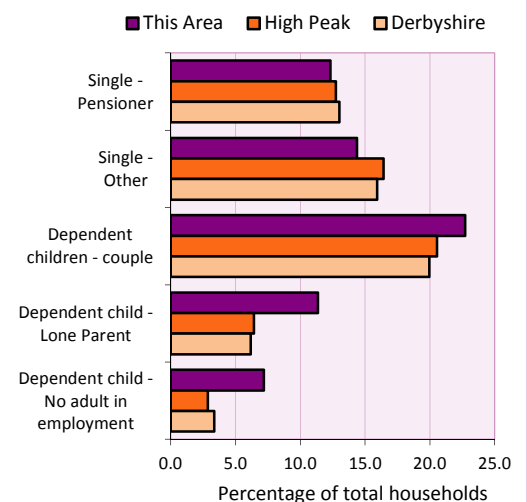
Table KS101EW and KS403EW

Household types

Number	% of total households			
	This Area	High Peak	Derbyshire	
Single person households	498	26.7	29.2	28.9
Pensioner	230	12.3	12.7	13.0
Other	268	14.4	16.4	15.9
Households with dependent children				
All	678	36.3	28.4	27.6
Couple	424	22.7	20.5	19.9
Lone parent	212	11.4	6.4	6.2
No adult in employment	134	7.2	2.9	3.4
One person with a long-term health problem - or disability	131	7.0	4.4	4.5

Table KS105EW and KS106EW

Household types



Car/van ownership

Number of households	% of total households			
	This Area	High Peak	Derbyshire	
No car or van	557	29.8	19.6	20.1

Table KS404EW

2011 Census: Summary Profile

Stone Bench

Area type and code
Ward (E05003412)

Accommodation

Tenure	Number of households	% of total households		
		This Area	High Peak	Derbyshire
Owner-occupied	1,047	56.1	72.6	71.4
Rented from council/housing association	607	32.5	12.7	15.3
Private/other rented	189	10.1	13.4	12.0
Living rent free	23	1.2	1.2	1.3

Table KS402EW

Amenities	Number of households	% of total households		
		This Area	High Peak	Derbyshire
Overcrowded households	138	7.4	4.8	3.7
Households without central heating	26	1.4	2.3	2.0

Table KS403EW

Total household spaces	1,911
-------------------------------	--------------

Table KS401EW

Type of accommodation	Number of household spaces	% of total household spaces		
		This Area	High Peak	Derbyshire
Detached	59	3.1	23.5	31.8
Semi-detached	876	45.8	29.2	38.7
Terraced	797	41.7	34.4	20.6
Flat/maisonette/apartment	177	9.3	12.6	8.6
Other	2	0.1	0.2	0.3

Table KS401EW

Marital status

Marital status	Number of people	% of people aged 16+		
		This Area	High Peak	Derbyshire
Single	1,260	35.7	30.9	29.3
Married	1,500	42.6	49.1	50.5
Same-sex civil partnership	4	0.1	0.2	0.2
Separated	93	2.6	2.4	2.4
Divorced	385	10.9	9.9	9.9
Widowed / surviving partner	283	8.0	7.4	7.7

Table KS103EW

Health

Health	Number of people	% of total population		
		This Area	High Peak	Derbyshire
People whose day-to-day activities are limited	888	19.4	18.1	20.4
People with 'bad' general health	299	6.5	5.2	6.2
People providing unpaid care	509	11.1	11.3	12.1

Table KS301EW

2011 Census: Summary Profile

Stone Bench

Area type and code
Ward (E05003412)

Ethnicity

Ethnic group	Number of people	% of total population		
		This Area	High Peak	Derbyshire
White British	4,354	95.2	95.9	95.8
Black and Minority Ethnic (BME)	219	4.8	4.1	4.2
White Other	113	2.5	2.0	1.7
Mixed/multiple ethnic groups	56	1.2	1.0	0.9
Asian/Asian British	34	0.7	0.8	1.1
Black/African/Caribbean/Black British	14	0.3	0.2	0.4
Other ethnic group	2	0.0	0.1	0.1

Table KS201EW

Religion

Religion	Number of people	% of total population		
		This Area	High Peak	Derbyshire
Christian	2,887	63.1	64.1	63.6
Buddhist	22	0.5	0.3	0.2
Hindu	6	0.1	0.1	0.2
Jewish	0	0.0	0.0	0.0
Muslim	9	0.2	0.2	0.3
Sikh	4	0.1	0.0	0.3
Other religions	16	0.3	0.4	0.4
No religion	1,280	28.0	27.6	28.0
Not stated	349	7.6	7.2	7.0

Table KS209EW

Migration

Country of birth by year of arrival in the UK	Number of people	% of total residents		
		This Area	High Peak	Derbyshire
From within the UK total	4,392	96.0	96.4	96.7
From outside the UK total	181	4.0	3.6	3.3
<i>of which</i>				
- Ireland	24	0.5	0.5	0.3
- Other EU country	76	1.7	0.8	0.9
- European (Non-EU country)	31	0.7	0.2	0.1
- Other parts of the world	50	1.1	1.7	1.6

Table LC2804EW

Length of residence in the UK	Number of people	% of total residents		
		This Area	High Peak	Derbyshire
Less than 2 years	20	0.4	0.2	0.3
2 years or more but less than 5 years	54	1.2	0.5	0.5
5 years or more but less than 10 years	31	0.7	0.6	0.6
10 years or more	76	1.7	2.2	2.0
Born in the UK	4,392	96.0	96.4	96.7

Table QS803EW

2011 Census: Summary Profile

Stone Bench

Area type and code
Ward (E05003412)

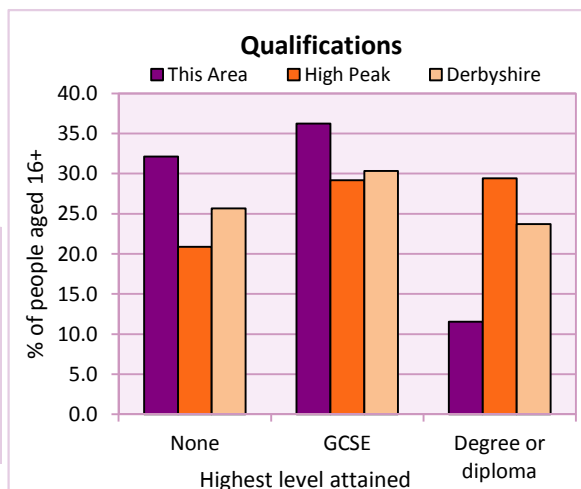
Education

Full-time students	Number	% of population in age group		
		This Area	High Peak	Derbyshire
aged 16-17	124	82.7	88.0	86.3
aged 18-74	112	3.7	3.9	2.9

Table KS501EW

Qualifications	People (aged 16+)	% of all people aged 16+		
		This Area	High Peak	Derbyshire
No qualifications	1,132	32.1	20.9	25.7
Highest level attained				
GCSE	1,277	36.2	29.2	30.3
Degree or diploma	407	11.5	29.4	23.7

Table KS501EW



Workforce

Economic activity	People aged 16-74								
	This Area			High Peak			Derbyshire		
	Males	Females	All	Males	Females	All	Males	Females	All
Economically active									
- number	1,211	1,044	2,255	25,645	22,915	48,560	211,349	185,704	397,053
- rate (%)	76.8	64.1	70.3	76.3	67.8	72.1	74.8	65.1	69.9
All unemployed									
- number	104	68	172	1,563	1,013	2,576	13,541	8,665	22,206
- rate (%)	6.6	4.2	5.4	4.7	3.0	3.8	4.8	3.0	3.9
Economically inactive									
- number	366	585	951	7,965	10,864	18,829	71,240	99,505	170,745
- rate (%)	23.2	35.9	29.7	23.7	32.2	27.9	25.2	34.9	30.1

Table KS601EW KS602EW and KS603EW

Hours worked	% of people aged 16-74 in employment					
	Full time (more than 30 hrs)			Part time (30 hrs or less)		
	This Area	High Peak	Derbyshire	This Area	High Peak	Derbyshire
All	66.0	70.0	70.3	34.0	30.0	29.7
Males	85.4	85.6	86.5	14.6	14.4	13.5
Females	44.0	52.8	52.1	56.0	47.2	47.9

Table KS604EW

People travelling to work	This Area	High Peak	Derbyshire
- works mainly at or from home %	5.7	12.2	10.5
- by car or van %	53.9	59.4	65.6
- by public transport or taxi %	3.8	8.4	6.6
- by all other methods of travel %	36.6	20.0	17.4
Average distance travelled km	9.9	15.7	15.2

Table LC7101EW and QS702EW

2011 Census: Summary Profile

Stone Bench

Area type and code
Ward (E05003412)

Workforce (continued)

Industry (people aged 16-74 in employment)	Number of workers	% of people aged 16-74 in employment		
		This Area	High Peak	Derbyshire
Agriculture, forestry and fishing	10	0.5	1.0	1.0
Mining, quarrying and utilities	70	3.4	2.0	1.9
Manufacturing	343	16.7	13.3	14.9
Construction	183	8.9	7.6	8.5
Wholesale and retail	394	19.2	14.4	16.6
Business services	514	25.0	27.4	25.1
Public services	456	22.2	29.6	27.5
Other services	87	4.2	4.7	4.5

Chart category

Other

Other

Manufacturing

Other

Services

Services

Services

Services

Table KS605EW

Occupation (people aged 16-74 in employment)	Number of workers	% of people aged 16-74 in employment		
		This Area	High Peak	Derbyshire
Managers, directors & senior officials	128	6.2	11.3	10.9
Professional	132	6.4	17.8	15.1
Associate professional & technical	148	7.2	11.7	11.0
Administrative & secretarial	148	7.2	10.1	10.9
Skilled trades	317	15.4	12.6	13.3
Caring, leisure & other services	262	12.7	10.0	9.6
Sales & customer service	234	11.4	7.0	7.9
Process, plant & machine operatives	320	15.6	9.0	9.6
Elementary occupations	368	17.9	10.4	11.7

Chart category

Managerial & professional

Managerial & professional

Managerial & professional

Other non-manual

Manual

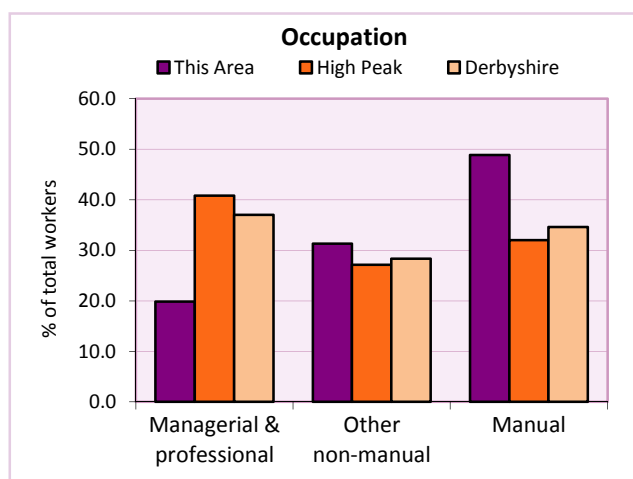
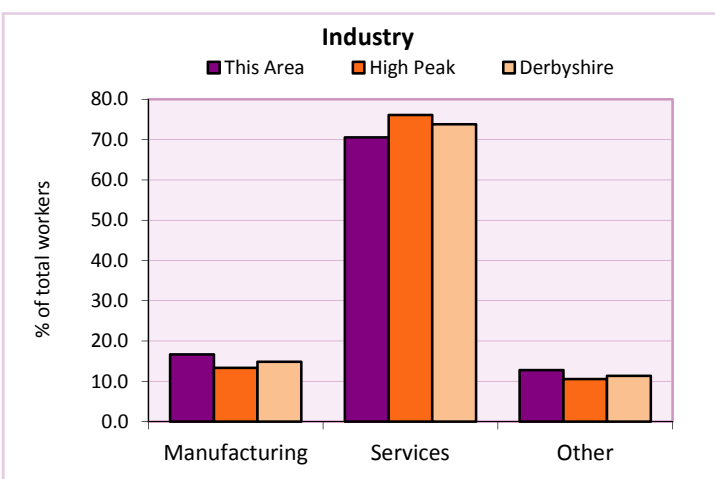
Other non-manual

Other non-manual

Manual

Manual

Table KS608EW



For an **explanation** of the various terms used in these tables, please see the accompanying **Glossary**.

Extension profiles covering the following topics in more detail will also be available:

Population, Economic Activity, Equalities, Health, Households, and Housing.

Profiles in Adobe Acrobat (pdf) format can be downloaded from the Derbyshire Observatory web site, which also provides interactive maps and charts - <http://observatory.derbyshire.gov.uk>

Please note that figures vary across the Census Profiles as different denominators are used. 2011 Census Table reference numbers are provided beneath each individual table in the Census Profiles should you require further information.

Version: 6.31