

## Tintwistle

Area type and code  
Ward (E05003414)

### Population

#### Population change since 2001

Change in numbers	% change		
	This Area	High Peak	Derbyshire
-132	-5.9	+1.6	+4.8

2011 Census Table KS101EW and 2001 Census Table S001

#### Density of population

Area (hectares)	Persons per hectare		
	This Area	High Peak	Derbyshire
4,803	0.4	1.7	3.0

Table KS101EW

Age structure	Number of people	% of total population		
		This Area	High Peak	Derbyshire
0-4 years	125	5.9	5.5	5.4
5-15 years	273	13.0	12.7	12.4
16-24 years	226	10.8	10.6	10.2
25-64 years	1,200	57.1	54.0	53.5
65 and over	277	13.2	17.2	18.6

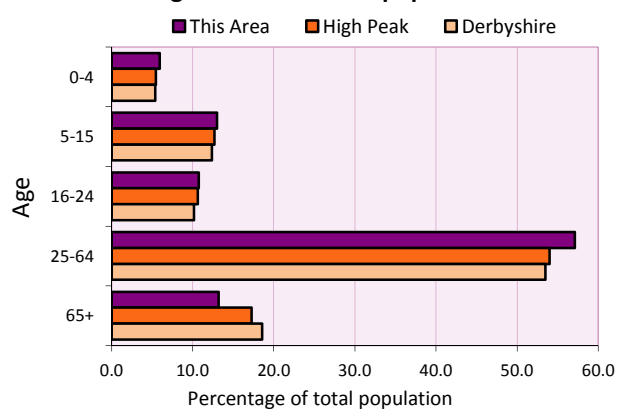
Table KS102EW

#### Residents

	Number
Total resident population	2,101
- in households	2,090
- in communal establishments	11

Table KS101EW

#### Age structure of the population



### Households

#### Total households

Number	Average household size (persons)		
	This Area	High Peak	Derbyshire
917	2.29	2.33	2.31

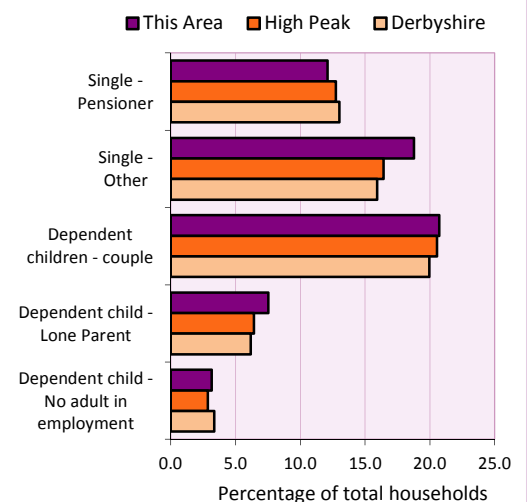
Table KS101EW and KS403EW

#### Household types

Household types	Number	% of total households		
		This Area	High Peak	Derbyshire
Single person households	283	30.9	29.2	28.9
Pensioner	111	12.1	12.7	13.0
Other	172	18.8	16.4	15.9
Households with dependent children				
All	274	29.9	28.4	27.6
Couple	190	20.7	20.5	19.9
Lone parent	69	7.5	6.4	6.2
No adult in employment	29	3.2	2.9	3.4
One person with a long-term health problem - or disability	43	4.7	4.4	4.5

Table KS105EW and KS106EW

#### Household types



#### Car/van ownership

Number of households	% of total households			
	This Area	High Peak	Derbyshire	
No car or van	150	16.4	19.6	20.1

Table KS404EW

# 2011 Census: Summary Profile

Tintwistle

Area type and code  
Ward (E05003414)

## Accommodation

Tenure	Number of households	% of total households		
		This Area	High Peak	Derbyshire
Owner-occupied	680	74.2	72.6	71.4
Rented from council/housing association	118	12.9	12.7	15.3
Private/other rented	110	12.0	13.4	12.0
Living rent free	9	1.0	1.2	1.3

Table KS402EW

Amenities	Number of households	% of total households		
		This Area	High Peak	Derbyshire
Overcrowded households	26	2.8	4.8	3.7
Households without central heating	34	3.7	2.3	2.0

Table KS403EW

<b>Total household spaces</b>	<b>961</b>
-------------------------------	------------

Table KS401EW

Type of accommodation	Number of household spaces	% of total household spaces		
		This Area	High Peak	Derbyshire
Detached	141	14.7	23.5	31.8
Semi-detached	315	32.8	29.2	38.7
Terraced	476	49.5	34.4	20.6
Flat/maisonette/apartment	29	3.0	12.6	8.6
Other	0	0.0	0.2	0.3

Table KS401EW

## Marital status

Marital status	Number of people	% of people aged 16+		
		This Area	High Peak	Derbyshire
Single	554	32.5	30.9	29.3
Married	783	46.0	49.1	50.5
Same-sex civil partnership	13	0.8	0.2	0.2
Separated	56	3.3	2.4	2.4
Divorced	169	9.9	9.9	9.9
Widowed / surviving partner	128	7.5	7.4	7.7

Table KS103EW

## Health

Health	Number of people	% of total population		
		This Area	High Peak	Derbyshire
People whose day-to-day activities are limited	372	17.7	18.1	20.4
People with 'bad' general health	112	5.3	5.2	6.2
People providing unpaid care	245	11.7	11.3	12.1

Table KS301EW

# 2011 Census: Summary Profile

Tintwistle

Area type and code  
Ward (E05003414)

## Ethnicity

Ethnic group	Number of people	% of total population		
		This Area	High Peak	Derbyshire
White British	2,014	95.9	95.9	95.8
Black and Minority Ethnic (BME)	87	4.1	4.1	4.2
White Other	45	2.1	2.0	1.7
Mixed/multiple ethnic groups	28	1.3	1.0	0.9
Asian/Asian British	7	0.3	0.8	1.1
Black/African/Caribbean/Black British	5	0.2	0.2	0.4
Other ethnic group	2	0.1	0.1	0.1

Table KS201EW

## Religion

Religion	Number of people	% of total population		
		This Area	High Peak	Derbyshire
Christian	1,413	67.3	64.1	63.6
Buddhist	2	0.1	0.3	0.2
Hindu	0	0.0	0.1	0.2
Jewish	1	0.0	0.0	0.0
Muslim	3	0.1	0.2	0.3
Sikh	0	0.0	0.0	0.3
Other religions	11	0.5	0.4	0.4
No religion	540	25.7	27.6	28.0
Not stated	131	6.2	7.2	7.0

Table KS209EW

## Migration

Country of birth by year of arrival in the UK	Number of people	% of total residents		
		This Area	High Peak	Derbyshire
From within the UK total	2,047	97.4	96.4	96.7
From outside the UK total	54	2.6	3.6	3.3
<i>of which</i>				
- Ireland	6	0.3	0.5	0.3
- Other EU country	13	0.6	0.8	0.9
- European (Non-EU country)	17	0.8	0.2	0.1
- Other parts of the world	18	0.9	1.7	1.6

Table LC2804EW

Length of residence in the UK	Number of people	% of total residents		
		This Area	High Peak	Derbyshire
Less than 2 years	1	0.0	0.2	0.3
2 years or more but less than 5 years	8	0.4	0.5	0.5
5 years or more but less than 10 years	7	0.3	0.6	0.6
10 years or more	38	1.8	2.2	2.0
Born in the UK	2,047	97.4	96.4	96.7

Table QS803EW

# 2011 Census: Summary Profile

Tintwistle

Area type and code  
Ward (E05003414)

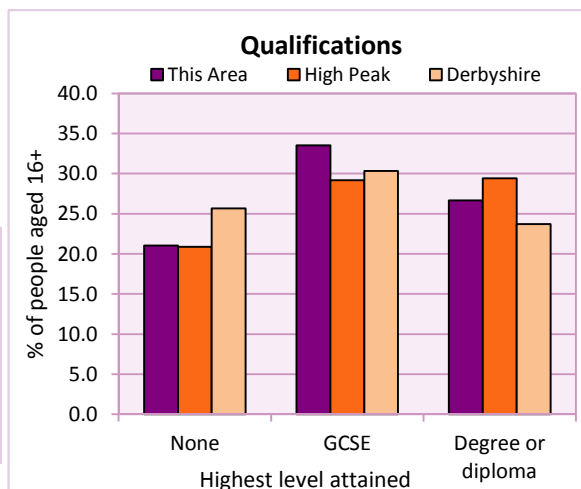
## Education

Full-time students	Number	% of population in age group		
		This Area	High Peak	Derbyshire
aged 16-17	45	93.8	88.0	86.3
aged 18-74	57	3.7	3.9	2.9

Table KS501EW

Qualifications	People (aged 16+)	% of all people aged 16+		
		This Area	High Peak	Derbyshire
No qualifications	358	21.0	20.9	25.7
Highest level attained				
GCSE	571	33.5	29.2	30.3
Degree or diploma	454	26.7	29.4	23.7

Table KS501EW



## Workforce

Economic activity	People aged 16-74								
	This Area			High Peak			Derbyshire		
	Males	Females	All	Males	Females	All	Males	Females	All
Economically active									
- number	610	546	1,156	25,645	22,915	48,560	211,349	185,704	397,053
- rate (%)	77.1	68.5	72.8	76.3	67.8	72.1	74.8	65.1	69.9
All unemployed									
- number	33	31	64	1,563	1,013	2,576	13,541	8,665	22,206
- rate (%)	4.2	3.9	4.0	4.7	3.0	3.8	4.8	3.0	3.9
Economically inactive									
- number	181	251	432	7,965	10,864	18,829	71,240	99,505	170,745
- rate (%)	22.9	31.5	27.2	23.7	32.2	27.9	25.2	34.9	30.1

Table KS601EW KS602EW and KS603EW

Hours worked	% of people aged 16-74 in employment					
	Full time (more than 30 hrs)			Part time (30 hrs or less)		
	This Area	High Peak	Derbyshire	This Area	High Peak	Derbyshire
All	73.6	70.0	70.3	26.4	30.0	29.7
Males	87.7	85.6	86.5	12.3	14.4	13.5
Females	58.0	52.8	52.1	42.0	47.2	47.9

Table KS604EW

People travelling to work	This Area	High Peak	Derbyshire
- works mainly at or from home %	9.6	12.2	10.5
- by car or van %	67.2	59.4	65.6
- by public transport or taxi %	8.2	8.4	6.6
- by all other methods of travel %	14.9	20.0	17.4
Average distance travelled km	16.1	15.7	15.2

Table LC7101EW and QS702EW

# 2011 Census: Summary Profile

Tintwistle

Area type and code  
Ward (E05003414)

## Workforce (continued)

Industry (people aged 16-74 in employment)	Number of workers	% of people aged 16-74 in employment		
		This Area	High Peak	Derbyshire
Agriculture, forestry and fishing	10	0.9	1.0	1.0
Mining, quarrying and utilities	21	1.9	2.0	1.9
Manufacturing	172	15.9	13.3	14.9
Construction	96	8.8	7.6	8.5
Wholesale and retail	163	15.0	14.4	16.6
Business services	254	23.4	27.4	25.1
Public services	337	31.1	29.6	27.5
Other services	32	2.9	4.7	4.5

### Chart category

Other

Other

Manufacturing

Other

Services

Services

Services

Services

Table KS605EW

Occupation (people aged 16-74 in employment)	Number of workers	% of people aged 16-74 in employment		
		This Area	High Peak	Derbyshire
Managers, directors & senior officials	119	11.0	11.3	10.9
Professional	188	17.3	17.8	15.1
Associate professional & technical	143	13.2	11.7	11.0
Administrative & secretarial	120	11.1	10.1	10.9
Skilled trades	134	12.4	12.6	13.3
Caring, leisure & other services	80	7.4	10.0	9.6
Sales & customer service	84	7.7	7.0	7.9
Process, plant & machine operatives	86	7.9	9.0	9.6
Elementary occupations	131	12.1	10.4	11.7

### Chart category

Managerial & professional

Managerial & professional

Managerial & professional

Other non-manual

Manual

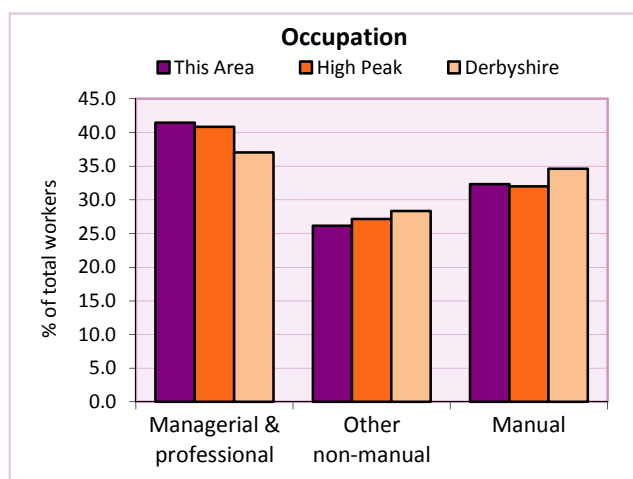
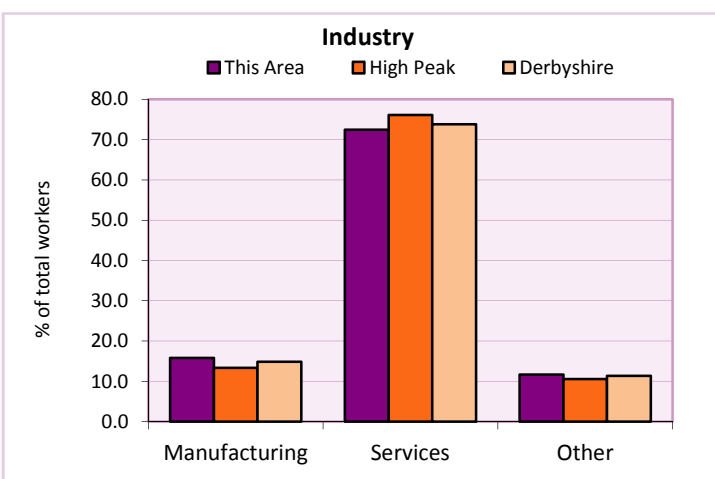
Other non-manual

Other non-manual

Manual

Manual

Table KS608EW



For an **explanation** of the various terms used in these tables, please see the accompanying **Glossary**.

**Extension profiles** covering the following topics in more detail will also be available:

**Population, Economic Activity, Equalities, Health, Households, and Housing.**

**Profiles** in Adobe Acrobat (pdf) format can be downloaded from the Derbyshire Observatory web site, which also provides interactive maps and charts - <http://observatory.derbyshire.gov.uk>

**Please note that figures vary across the Census Profiles as different denominators are used. 2011 Census Table reference numbers are provided beneath each individual table in the Census Profiles should you require further information.**

Version: 6.31