

Church Gresley

Area type and code
Ward (E05008810)

Population

Population change since 2001

Change in numbers	% change		
	This Area	S. Derbyshire	Derbyshire
+2,076	+43.2	+16.0	+4.8

2011 Census Table KS101EW and 2001 Census Table S001

Residents

	Number
Total resident population	6,881
- in households	6,822
- in communal establishments	59

Table KS101EW

Density of population

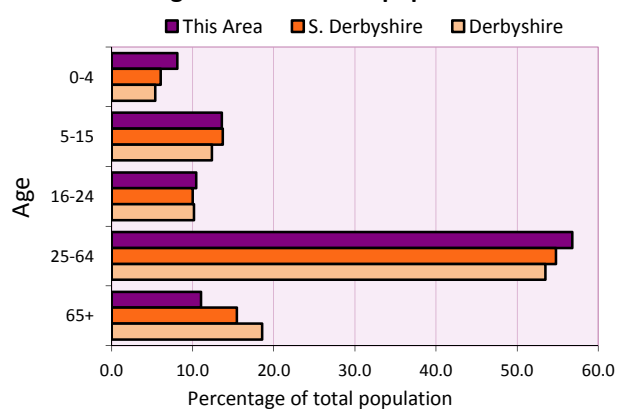
Area (hectares)	Persons per hectare		
	This Area	S. Derbyshire	Derbyshire
340	20.2	2.8	3.0

Table KS101EW

Age structure	Number of people	% of total population		
		This Area	S. Derbyshire	Derbyshire
0-4 years	558	8.1	6.1	5.4
5-15 years	936	13.6	13.7	12.4
16-24 years	719	10.4	10.0	10.2
25-64 years	3,909	56.8	54.8	53.5
65 and over	759	11.0	15.5	18.6

Table KS102EW

Age structure of the population



Households

Total households

Number	Average household size (persons)		
	This Area	S. Derbyshire	Derbyshire
2,923	2.35	2.43	2.31

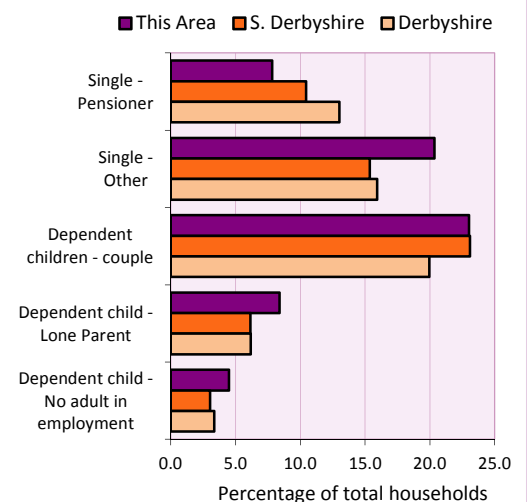
Table KS101EW and KS403EW

Household types

Number	% of total households			
	This Area	S. Derbyshire	Derbyshire	
Single person households	824	28.2	25.8	28.9
Pensioner	229	7.8	10.4	13.0
Other	595	20.4	15.4	15.9
Households with dependent children				
All	961	32.9	30.9	27.6
Couple	673	23.0	23.1	19.9
Lone parent	245	8.4	6.1	6.2
No adult in employment	131	4.5	3.0	3.4
One person with a long-term health problem - or disability	149	5.1	4.6	4.5

Table KS105EW and KS106EW

Household types



Car/van ownership

Number of households	% of total households			
	This Area	S. Derbyshire	Derbyshire	
No car or van	505	17.3	13.5	20.1

Table KS404EW

2011 Census: Summary Profile

Church Gresley

Area type and code
Ward (E05008810)

Accommodation

Tenure	Number of households	% of total households		
		This Area	S. Derbyshire	Derbyshire
Owner-occupied	1,988	68.0	75.8	71.4
Rented from council/housing association	311	10.6	9.9	15.3
Private/other rented	603	20.6	13.0	12.0
Living rent free	21	0.7	1.2	1.3

Table KS402EW

Amenities	Number of households	% of total households		
		This Area	S. Derbyshire	Derbyshire
Overcrowded households	163	5.6	3.2	3.7
Households without central heating	57	2.0	2.0	2.0

Table KS403EW

Total household spaces	3,046
-------------------------------	--------------

Table KS401EW

Type of accommodation	Number of household spaces	% of total household spaces		
		This Area	S. Derbyshire	Derbyshire
Detached	858	28.2	39.8	31.8
Semi-detached	989	32.5	34.9	38.7
Terraced	891	29.3	18.1	20.6
Flat/maisonette/apartment	308	10.1	6.5	8.6
Other	0	0.0	0.7	0.3

Table KS401EW

Marital status

Marital status	Number of people	% of people aged 16+		
		This Area	S. Derbyshire	Derbyshire
Single	1,825	33.9	28.7	29.3
Married	2,457	45.6	52.7	50.5
Same-sex civil partnership	10	0.2	0.2	0.2
Separated	169	3.1	2.5	2.4
Divorced	600	11.1	9.4	9.9
Widowed / surviving partner	326	6.1	6.6	7.7

Table KS103EW

Health

Health	Number of people	% of total population		
		This Area	S. Derbyshire	Derbyshire
People whose day-to-day activities are limited	1,175	17.1	17.5	20.4
People with 'bad' general health	361	5.2	4.9	6.2
People providing unpaid care	635	9.2	11.1	12.1

Table KS301EW

2011 Census: Summary Profile

Church Gresley

Area type and code
Ward (E05008810)

Ethnicity

Ethnic group	Number of people	% of total population		
		This Area	S. Derbyshire	Derbyshire
White British	6,577	95.6	94.0	95.8
Black and Minority Ethnic (BME)	304	4.4	6.0	4.2
White Other	101	1.5	1.7	1.7
Mixed/multiple ethnic groups	69	1.0	1.1	0.9
Asian/Asian British	100	1.5	2.5	1.1
Black/African/Caribbean/Black British	24	0.3	0.4	0.4
Other ethnic group	10	0.1	0.1	0.1

Table KS201EW

Religion

Religion	Number of people	% of total population		
		This Area	S. Derbyshire	Derbyshire
Christian	4,143	60.2	64.0	63.6
Buddhist	19	0.3	0.2	0.2
Hindu	17	0.2	0.3	0.2
Jewish	2	0.0	0.0	0.0
Muslim	17	0.2	0.3	0.3
Sikh	12	0.2	1.5	0.3
Other religions	26	0.4	0.4	0.4
No religion	2,214	32.2	26.8	28.0
Not stated	431	6.3	6.6	7.0

Table KS209EW

Migration

Country of birth by year of arrival in the UK	Number of people	% of total residents		
		This Area	S. Derbyshire	Derbyshire
From within the UK total	6,677	97.0	96.1	96.7
From outside the UK total	204	3.0	3.9	3.3
<i>of which</i>				
- Ireland	18	0.3	0.3	0.3
- Other EU country	49	0.7	0.9	0.9
- European (Non-EU country)	29	0.4	0.2	0.1
- Other parts of the world	108	1.6	2.2	1.6

Table LC2804EW

Length of residence in the UK	Number of people	% of total residents		
		This Area	S. Derbyshire	Derbyshire
Less than 2 years	10	0.1	0.3	0.3
2 years or more but less than 5 years	43	0.6	0.4	0.5
5 years or more but less than 10 years	40	0.6	0.7	0.6
10 years or more	111	1.6	2.5	2.0
Born in the UK	6,677	97.0	96.1	96.7

Table QS803EW

2011 Census: Summary Profile

Church Gresley

Area type and code
Ward (E05008810)

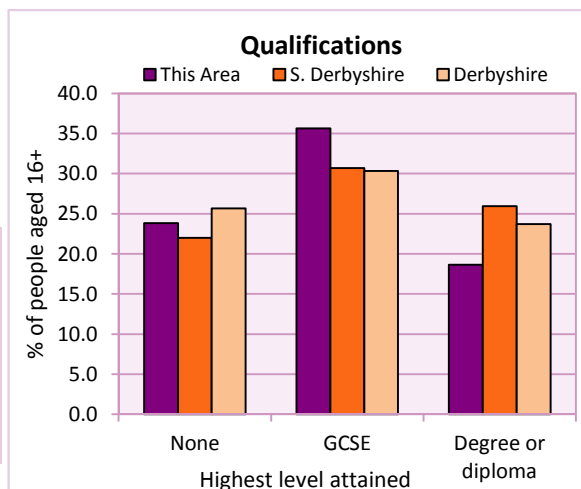
Education

Full-time students	Number	% of population in age group		
		This Area	S. Derbyshire	Derbyshire
aged 16-17	108	78.3	89.1	86.3
aged 18-74	147	3.0	3.0	2.9

Table KS501EW

Qualifications	People (aged 16+)	% of all people aged 16+		
		This Area	S. Derbyshire	Derbyshire
No qualifications	1,284	23.8	22.0	25.7
Highest level attained				
GCSE	1,919	35.6	30.7	30.3
Degree or diploma	1,005	18.7	26.0	23.7

Table KS501EW



Workforce

Economic activity	People aged 16-74								
	This Area			South Derbyshire			Derbyshire		
	Males	Females	All	Males	Females	All	Males	Females	All
Economically active									
- number	2,093	1,744	3,837	26,971	23,387	50,358	211,349	185,704	397,053
- rate (%)	81.5	70.4	76.1	78.0	67.1	72.5	74.8	65.1	69.9
All unemployed									
- number	106	84	190	1,236	889	2,125	13,541	8,665	22,206
- rate (%)	4.1	3.4	3.8	3.6	2.5	3.1	4.8	3.0	3.9
Economically inactive									
- number	475	732	1,207	7,615	11,477	19,092	71,240	99,505	170,745
- rate (%)	18.5	29.6	23.9	22.0	32.9	27.5	25.2	34.9	30.1

Table KS601EW KS602EW and KS603EW

Hours worked	% of people aged 16-74 in employment					
	Full time (more than 30 hrs)			Part time (30 hrs or less)		
	This Area	S. Derbyshire	Derbyshire	This Area	S. Derbyshire	Derbyshire
All	75.0	72.1	70.3	25.0	27.9	29.7
Males	90.2	88.4	86.5	9.8	11.6	13.5
Females	56.8	53.5	52.1	43.2	46.5	47.9

Table KS604EW

People travelling to work	This Area	S. Derbyshire	Derbyshire
- works mainly at or from home %	8.5	10.8	10.5
- by car or van %	71.6	71.5	65.6
- by public transport or taxi %	3.0	3.6	6.6
- by all other methods of travel %	17.0	14.2	17.4
Average distance travelled km	16.1	16.4	15.2

Table LC7101EW and QS702EW

2011 Census: Summary Profile

Church Gresley

Area type and code
Ward (E05008810)

Workforce (continued)

Industry (people aged 16-74 in employment)	Number of workers	% of people aged 16-74 in employment		
		This Area	S. Derbyshire	Derbyshire
Agriculture, forestry and fishing	12	0.3	1.2	1.0
Mining, quarrying and utilities	63	1.7	1.9	1.9
Manufacturing	642	17.8	17.1	14.9
Construction	313	8.7	7.8	8.5
Wholesale and retail	719	19.9	16.2	16.6
Business services	894	24.7	25.8	25.1
Public services	824	22.8	25.6	27.5
Other services	147	4.1	4.3	4.5

Chart category

Other

Other

Manufacturing

Other

Services

Services

Services

Services

Table KS605EW

Occupation (people aged 16-74 in employment)	Number of workers	% of people aged 16-74 in employment		
		This Area	S. Derbyshire	Derbyshire
Managers, directors & senior officials	379	10.5	12.1	10.9
Professional	425	11.8	16.1	15.1
Associate professional & technical	396	11.0	11.8	11.0
Administrative & secretarial	362	10.0	10.9	10.9
Skilled trades	481	13.3	12.4	13.3
Caring, leisure & other services	351	9.7	8.8	9.6
Sales & customer service	297	8.2	7.1	7.9
Process, plant & machine operatives	453	12.5	9.8	9.6
Elementary occupations	470	13.0	10.9	11.7

Chart category

Managerial & professional

Managerial & professional

Managerial & professional

Other non-manual

Manual

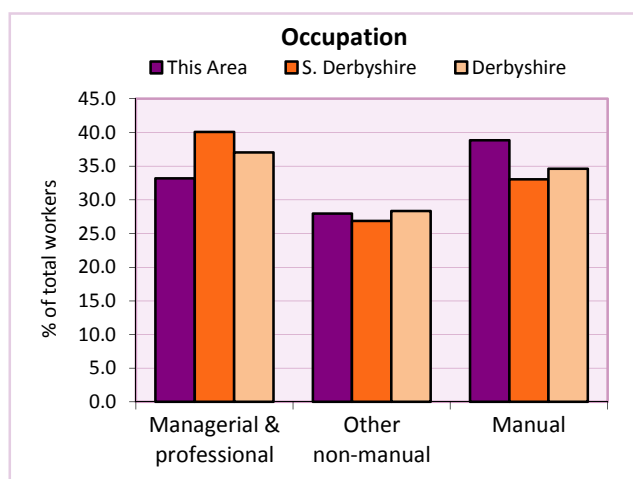
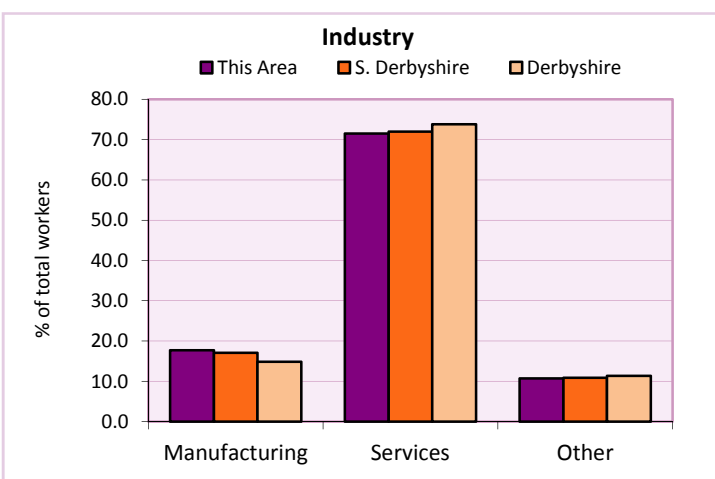
Other non-manual

Other non-manual

Manual

Manual

Table KS608EW



For an **explanation** of the various terms used in these tables, please see the accompanying **Glossary**.

Extension profiles covering the following topics in more detail will also be available:

Population, Economic Activity, Equalities, Health, Households, and Housing.

Profiles in Adobe Acrobat (pdf) format can be downloaded from the Derbyshire Observatory web site, which also provides interactive maps and charts - <http://observatory.derbyshire.gov.uk>

Please note that figures vary across the Census Profiles as different denominators are used. 2011 Census Table reference numbers are provided beneath each individual table in the Census Profiles should you require further information.

Version: 6.31