

Hatton

Area type and code
Ward (E05008812)

Population

Population change since 2001

Change in numbers	% change		
	This Area	S. Derbyshire	Derbyshire
+112	+4.6	+16.0	+4.8

2011 Census Table KS101EW and 2001 Census Table S001

Residents

	Number
Total resident population	2,563
- in households	2,563
- in communal establishments	0

Table KS101EW

Density of population

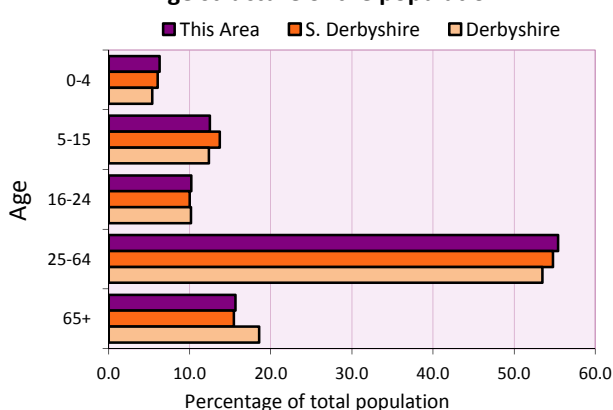
Area (hectares)	Persons per hectare		
	This Area	S. Derbyshire	Derbyshire
145	17.7	2.8	3.0

Table KS101EW

Age structure	Number of people	% of total population		
		This Area	S. Derbyshire	Derbyshire
0-4 years	161	6.3	6.1	5.4
5-15 years	320	12.5	13.7	12.4
16-24 years	261	10.2	10.0	10.2
25-64 years	1,420	55.4	54.8	53.5
65 and over	401	15.6	15.5	18.6

Table KS102EW

Age structure of the population



Households

Total households

Number	Average household size (persons)		
	This Area	S. Derbyshire	Derbyshire
1,123	2.28	2.43	2.31

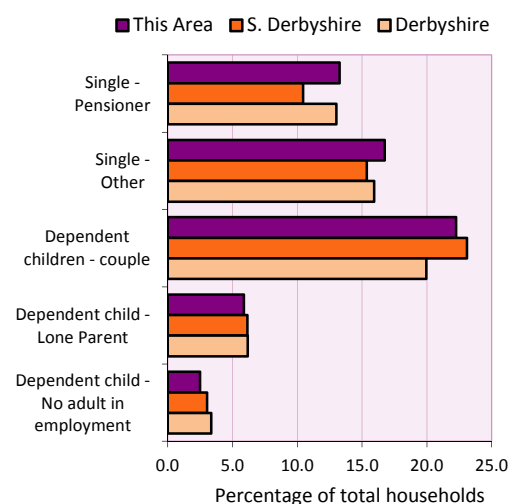
Table KS101EW and KS403EW

Household types

Number	% of total households			
	This Area	S. Derbyshire	Derbyshire	
Single person households	337	30.0	25.8	28.9
Pensioner	149	13.3	10.4	13.0
Other	188	16.7	15.4	15.9
Households with dependent children				
All	330	29.4	30.9	27.6
Couple	250	22.3	23.1	19.9
Lone parent	66	5.9	6.1	6.2
No adult in employment	28	2.5	3.0	3.4
One person with a long-term health problem - or disability	46	4.1	4.6	4.5

Table KS105EW and KS106EW

Household types



Car/van ownership

Number of households	% of total households			
	This Area	S. Derbyshire	Derbyshire	
No car or van	184	16.4	13.5	20.1

Table KS404EW

2011 Census: Summary Profile

Hatton

Area type and code
Ward (E05008812)

Accommodation

Tenure	Number of households	% of total households		
		This Area	S. Derbyshire	Derbyshire
Owner-occupied	862	76.8	75.8	71.4
Rented from council/housing association	110	9.8	9.9	15.3
Private/other rented	138	12.3	13.0	12.0
Living rent free	13	1.2	1.2	1.3

Table KS402EW

Amenities	Number of households	% of total households		
		This Area	S. Derbyshire	Derbyshire
Overcrowded households	36	3.2	3.2	3.7
Households without central heating	37	3.3	2.0	2.0

Table KS403EW

Total household spaces	1,153
-------------------------------	--------------

Table KS401EW

Type of accommodation	Number of household spaces	% of total household spaces		
		This Area	S. Derbyshire	Derbyshire
Detached	342	29.7	39.8	31.8
Semi-detached	476	41.3	34.9	38.7
Terraced	301	26.1	18.1	20.6
Flat/maisonette/apartment	32	2.8	6.5	8.6
Other	2	0.2	0.7	0.3

Table KS401EW

Marital status

Marital status	Number of people	% of people aged 16+		
		This Area	S. Derbyshire	Derbyshire
Single	653	31.4	28.7	29.3
Married	1,014	48.7	52.7	50.5
Same-sex civil partnership	3	0.1	0.2	0.2
Separated	53	2.5	2.5	2.4
Divorced	217	10.4	9.4	9.9
Widowed / surviving partner	142	6.8	6.6	7.7

Table KS103EW

Health

Health	Number of people	% of total population		
		This Area	S. Derbyshire	Derbyshire
People whose day-to-day activities are limited	425	16.6	17.5	20.4
People with 'bad' general health	128	5.0	4.9	6.2
People providing unpaid care	288	11.2	11.1	12.1

Table KS301EW

2011 Census: Summary Profile

Hatton

Area type and code
Ward (E05008812)

Ethnicity

Ethnic group	Number of people	% of total population		
		This Area	S. Derbyshire	Derbyshire
White British	2,495	97.3	94.0	95.8
Black and Minority Ethnic (BME)	68	2.7	6.0	4.2
White Other	31	1.2	1.7	1.7
Mixed/multiple ethnic groups	18	0.7	1.1	0.9
Asian/Asian British	12	0.5	2.5	1.1
Black/African/Caribbean/Black British	3	0.1	0.4	0.4
Other ethnic group	4	0.2	0.1	0.1

Table KS201EW

Religion

Religion	Number of people	% of total population		
		This Area	S. Derbyshire	Derbyshire
Christian	1,825	71.2	64.0	63.6
Buddhist	4	0.2	0.2	0.2
Hindu	0	0.0	0.3	0.2
Jewish	1	0.0	0.0	0.0
Muslim	1	0.0	0.3	0.3
Sikh	6	0.2	1.5	0.3
Other religions	2	0.1	0.4	0.4
No religion	607	23.7	26.8	28.0
Not stated	117	4.6	6.6	7.0

Table KS209EW

Migration

Country of birth by year of arrival in the UK	Number of people	% of total residents		
		This Area	S. Derbyshire	Derbyshire
From within the UK total	2,501	97.6	96.1	96.7
From outside the UK total	62	2.4	3.9	3.3
<i>of which</i>				
- Ireland	4	0.2	0.3	0.3
- Other EU country	25	1.0	0.9	0.9
- European (Non-EU country)	12	0.5	0.2	0.1
- Other parts of the world	21	0.8	2.2	1.6

Table LC2804EW

Length of residence in the UK	Number of people	% of total residents		
		This Area	S. Derbyshire	Derbyshire
Less than 2 years	7	0.3	0.3	0.3
2 years or more but less than 5 years	3	0.1	0.4	0.5
5 years or more but less than 10 years	11	0.4	0.7	0.6
10 years or more	41	1.6	2.5	2.0
Born in the UK	2,501	97.6	96.1	96.7

Table QS803EW

2011 Census: Summary Profile

Hatton

Area type and code
Ward (E05008812)

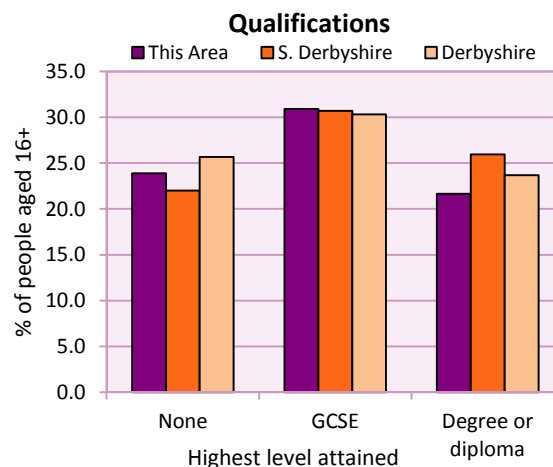
Education

Full-time students	Number	% of population in age group		
		This Area	S. Derbyshire	Derbyshire
aged 16-17	54	84.4	89.1	86.3
aged 18-74	49	2.7	3.0	2.9

Table KS501EW

Qualifications	People (aged 16+)	% of all people aged 16+		
		This Area	S. Derbyshire	Derbyshire
No qualifications	497	23.9	22.0	25.7
Highest level attained				
GCSE	643	30.9	30.7	30.3
Degree or diploma	451	21.7	26.0	23.7

Table KS501EW



Workforce

Economic activity	People aged 16-74								
	This Area			South Derbyshire			Derbyshire		
	Males	Females	All	Males	Females	All	Males	Females	All
Economically active									
- number	738	677	1,415	26,971	23,387	50,358	211,349	185,704	397,053
- rate (%)	80.1	70.5	75.2	78.0	67.1	72.5	74.8	65.1	69.9
All unemployed									
- number	29	26	55	1,236	889	2,125	13,541	8,665	22,206
- rate (%)	3.1	2.7	2.9	3.6	2.5	3.1	4.8	3.0	3.9
Economically inactive									
- number	183	283	466	7,615	11,477	19,092	71,240	99,505	170,745
- rate (%)	19.9	29.5	24.8	22.0	32.9	27.5	25.2	34.9	30.1

Table KS601EW KS602EW and KS603EW

Hours worked	% of people aged 16-74 in employment					
	Full time (more than 30 hrs)			Part time (30 hrs or less)		
	This Area	S. Derbyshire	Derbyshire	This Area	S. Derbyshire	Derbyshire
All	73.2	72.1	70.3	26.8	27.9	29.7
Males	88.7	88.4	86.5	11.3	11.6	13.5
Females	56.5	53.5	52.1	43.5	46.5	47.9

Table KS604EW

People travelling to work	This Area	S. Derbyshire	Derbyshire
- works mainly at or from home %	9.9	10.8	10.5
- by car or van %	67.7	71.5	65.6
- by public transport or taxi %	4.4	3.6	6.6
- by all other methods of travel %	18.0	14.2	17.4
Average distance travelled km	14.3	16.4	15.2

Table LC7101EW and QS702EW

2011 Census: Summary Profile

Hatton

Area type and code
Ward (E05008812)

Workforce (continued)

Industry (people aged 16-74 in employment)	Number of workers	% of people aged 16-74 in employment		
		This Area	S. Derbyshire	Derbyshire
Agriculture, forestry and fishing	17	1.3	1.2	1.0
Mining, quarrying and utilities	23	1.7	1.9	1.9
Manufacturing	272	20.0	17.1	14.9
Construction	106	7.8	7.8	8.5
Wholesale and retail	219	16.1	16.2	16.6
Business services	319	23.5	25.8	25.1
Public services	338	24.9	25.6	27.5
Other services	63	4.6	4.3	4.5

Chart category

Other

Other

Manufacturing

Other

Services

Services

Services

Services

Table KS605EW

Occupation (people aged 16-74 in employment)	Number of workers	% of people aged 16-74 in employment		
		This Area	S. Derbyshire	Derbyshire
Managers, directors & senior officials	130	9.6	12.1	10.9
Professional	163	12.0	16.1	15.1
Associate professional & technical	165	12.2	11.8	11.0
Administrative & secretarial	155	11.4	10.9	10.9
Skilled trades	166	12.2	12.4	13.3
Caring, leisure & other services	131	9.7	8.8	9.6
Sales & customer service	97	7.1	7.1	7.9
Process, plant & machine operatives	187	13.8	9.8	9.6
Elementary occupations	163	12.0	10.9	11.7

Chart category

Managerial & professional

Managerial & professional

Managerial & professional

Other non-manual

Manual

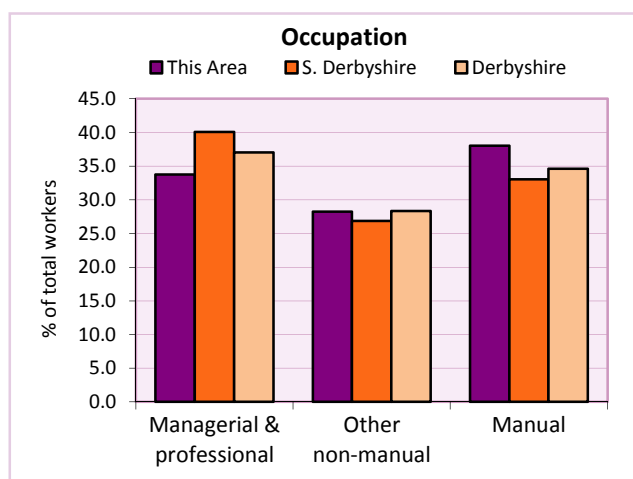
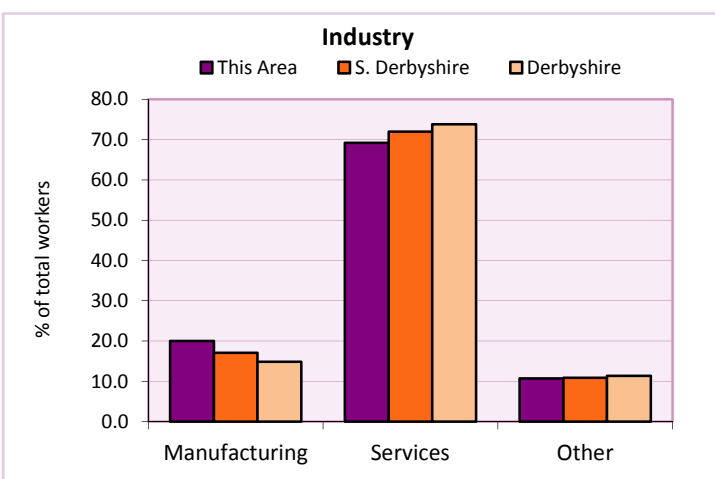
Other non-manual

Other non-manual

Manual

Manual

Table KS608EW



For an **explanation** of the various terms used in these tables, please see the accompanying **Glossary**.

Extension profiles covering the following topics in more detail will also be available:

Population, Economic Activity, Equalities, Health, Households, and Housing.

Profiles in Adobe Acrobat (pdf) format can be downloaded from the Derbyshire Observatory web site, which also provides interactive maps and charts - <http://observatory.derbyshire.gov.uk>

Please note that figures vary across the Census Profiles as different denominators are used. 2011 Census Table reference numbers are provided beneath each individual table in the Census Profiles should you require further information.

Version: 6.31